

**Conclusions:** Opioid addiction therapy should consist of an assessment of physical and psychological status, comorbid disorders, quality of life, etc. We can see, MT does not significantly affect the cognitive functions. The differences in the assessment of the quality of life were noted in the components of microsocial support and social well-being, which indicates the vulnerability of patients in these areas. Duration of opioid dependence, availability of psychosocial support, presence of comorbid conditions affect the quality of life. It is important that treatment is tailored to individual needs of patients.

**Disclosure of Interest:** None Declared

## EPP0083

### Clinical features and factors related to suicidal ideation in adult patients with benzodiazepine use disorder

P. Querol Clares<sup>1\*</sup>, G. Ortega Fernandez<sup>1</sup>, R.-F. Palma Alvarez<sup>1</sup>, C. Daigre<sup>2</sup>, M. Alijotas Capdevila<sup>1</sup>, J.-A. Ramos Quiroga<sup>1</sup> and L. Grau Lopez<sup>1</sup>

<sup>1</sup>psychiatry and <sup>2</sup>Hospital Vall d'Hebron, Barcelona, Spain

\*Corresponding author.

doi: 10.1192/j.eurpsy.2024.310

**Introduction:** Benzodiazepine use disorder (BUD) has been associated with the presence of suicidal ideation (SI) in general population. It seems there is an overall increase in the risk of attempting suicide due to the increase of impulsivity, rebound and withdrawal of those who use benzodiazepines (1). However, this association has been scarcely studied.

**Objectives:** To explore the prevalence, clinical features and factors related to lifetime SI in adults with BUD.

**Methods:** A cross-sectional study was conducted in an outpatient center for addiction treatment between 01/01/2010 and 12/31/2021. Adult patients who met criteria for active BUD were included. Patients with language barriers, cognitive impairments and those who were participating in any clinical trial were excluded. All patients were evaluated with an ad-hoc questionnaire, Euro-ASI (European Addiction Severity Index), BDI (Beck Depression Inventory) and HRQoL SF-36 (Health-related quality of life according to SF-36). Univariate and bivariate analyses were performed comparing BUD patients with or without SI.

**Results:** 554 patients were included (65.2% males; M age 42.6 ±12.6 years). SI was reported in 57.2% of the patients. Regarding the sociodemographic variables, any type of lifetime abuse was correlated with SI (67.8%, 73.5% and 77.8% of the patients with emotional, physical and sexual abuse respectively). Considering the different psychiatric features studied, having any psychiatric diagnosis increased SI up to 64%. Depressive and cluster B personality disorders were the ones with a higher presence of SI (67.1% and 68.1% respectively). Anxiety and cluster A personality disorders had also higher proportions of SI (56.1% and 58.7% respectively). Regarding the different assessment instruments used, a higher punctuation on BDI score was seen in the group of patients with SI (23.73±12.86). The scores also showed a worse perception of the mental quality of life of those people with SI, measured by HRQoL (13.76 and 36.82±31.93 in patients with SI and no SI respectively). Considering the Euro-ASI, there was an increased proportion of SI in those patients with a worse familiar situation (0.44±0.30), a

higher alcohol consumption (0.26±0.28) and a worse psychological condition (0.48±0.24).

**Conclusions:** The prevalence of SI in patients with BUD is significant and is related to several clinical factors. Those factors should be taken into account in daily clinical practice, research, and any health policies on suicide. Further research should be developed.

1. Dodds, T.J. 'Prescribed benzodiazepines and suicide risk', The Primary Care Companion For CNS Disorders 2017; 19(2).

**Disclosure of Interest:** None Declared

## EPP0084

### Factors Associated with Voluntary Discharge in a Hospital Detoxification Unit: An Observational and Descriptive Analysis

P. Gamboa Lozada<sup>1</sup>, G. Ortega Hernández<sup>2\*</sup>, R. F. Palma Álvarez<sup>2</sup>, A. Ríos Landeo<sup>2</sup>, J. A. Ramos Quiroga<sup>2</sup> and L. Grau López<sup>2</sup>

<sup>1</sup>Department of Psychiatry, Hospital Universitari Vall d'Hebron and

<sup>2</sup>Department of Psychiatry, Hospital Vall d'Hebron, Barcelona, Spain

\*Corresponding author.

doi: 10.1192/j.eurpsy.2024.311

**Introduction:** Adherence to treatment for addictive disorders remains a clinical challenge. Despite detoxification admissions being scheduled and initiated voluntarily by the patient, several factors may contribute to treatment discontinuation.<sup>1</sup> Understanding these factors will enable the development of specific interventions for a more effective approach.<sup>2</sup>

**Objectives:** To identify and analyze the relationship between specific clinical factors and voluntary treatment discontinuation.

**Methods:** An observational and descriptive study was conducted using a retrospective database of 1146 patients admitted to the "Hospital Universitari Vall d'Hebron" Detoxification Unit between June 2008 and December 2019. Bivariate analysis was conducted to identify individual associations between clinical factors and voluntary discharge. Subsequently, a multivariate analysis was performed to assess the combined influence of these factors while controlling for potential confounding variables.

**Results:** A total of 135 patients (11.8%) requested voluntary discharge. Significant differences were found between the voluntary discharge and non-voluntary discharge groups in patients with dual diagnosis (91.1% vs 80.9%,  $p<0.0001$ ), specifically the presence of psychotic disorder (18.7% vs 12%,  $p<0.05$ ) and cluster B personality disorder (66.7% vs 31%,  $p<0.0001$ ). Significant associations were also observed with prior detoxification admissions (64.5% vs 54.1%,  $p<0.05$ ), heroin as the main admission substance (29.6% vs 13.3%,  $p<0.0001$ ), lifetime use of more than three substances (65.3% vs 45.3%,  $p<0.0001$ ), and pre-admission binge-pattern substance use (72.1% vs 51.4%,  $p<0.0001$ ). A significant relationship was found with therapeutic discharge in the diagnosis of major depressive disorder (14.6% vs. 24.8%,  $p<0.05$ ), admission for alcohol detoxification (25.9% vs. 42.8%,  $p<0.0001$ ), and participation in group therapy during admission (27.4% vs. 49.9%,  $p<0.0001$ ). In the multivariate analysis, it was found that cluster B personality disorder ( $p<0.0001$ ), heroin as the primary substance of admission ( $p<0.05$ ), and pre-admission binge-pattern substance use ( $p<0.05$ ) were independently related to voluntary discharge.

**Conclusions:** Cluster B personality disorder, admission for heroin detoxification, and pre-admission binge-pattern substance use are factors associated with voluntary treatment discontinuation.

**Disclosure of Interest:** None Declared

## Child and Adolescent Psychiatry

### EPP0086

#### Associations between cerebellar development and autistic traits during adolescence: a population-based cohort study

C. Morimoto<sup>1\*</sup> and S. Koike<sup>2</sup>

<sup>1</sup>Faculty of Allied Health Science, Niigata University of Rehabilitation, Niigata and <sup>2</sup>Department of Neuropsychiatry, Graduate School of Medicine, University of Tokyo, Tokyo, Japan

\*Corresponding author.

doi: 10.1192/j.eurpsy.2024.312

**Introduction:** Brain maturation is associated with adolescent socio-cognitive development. The lateral posterior region of the cerebellum plays a critical role in higher cognitive processes, and deviations of this region are associated with autism-related behaviors. Hence, it is plausible that developmental changes in this region of the cerebellum during adolescence are different along a variation in autistic traits. Additionally, its difference may be moderated by parental age at birth and weight growth during infancy, which have effects on brain development.

**Objectives:** The aim of this study was two folds: (1) to test whether cerebellar development during adolescence is different along a variation in autistic traits (2) to test whether parental age at birth and weight growth during infancy moderate the results of (1).

**Methods:** Longitudinal study was conducted over a 6-year period with 256, 230 and 187 participants ranging from 10.5 to 17.6 years, observing adolescent development respectively at 2-year time periods. We undertook a detailed investigation into differences in the lateral posterior region of the cerebellum volume. The 50-item Autism-Spectrum Quotient (AQ) was rated by primary parents. Weight growth and parental age were evaluated using maternal and child health handbook records. A multiple regression analysis was performed to examine whether AQ subscales, sex, and their interactions affected cerebellar development. Moderation analysis assessed whether parental age and weight growth moderated associations between cerebellar development and autistic traits. All participants provided written informed consent, and the study was approved by the Ethics Committee (No.10069).

**Results:** Interactions between sex and attention switching and sex and attention to detail were significantly associated with cerebellar development in the bilateral gray matter (GM) and white matter (WM) of Crus I and Crus II (Fig1, 2). Simple slope analyses showed that the slopes of cerebellar development were significant for girls ( $p_{FDR} < 0.001$ ). Although no significant interaction was found between them, the main effect of attention to detail was significantly associated with cerebellar development in WM of VIIB ( $p_{FDR} = 0.006$ ). Further, moderation analysis found that the association between the cerebellar development and autistic traits were significantly moderated by maternal age; the magnitude of its effect was significant for high maternal age in boys ( $p_{FDR} = 0.036$ , Fig3).

Paternal age, early (0-9 months) and late weight growth (4-18 months) also moderated associations between them, however, no significance remained after FDR controlling.

**Image:**

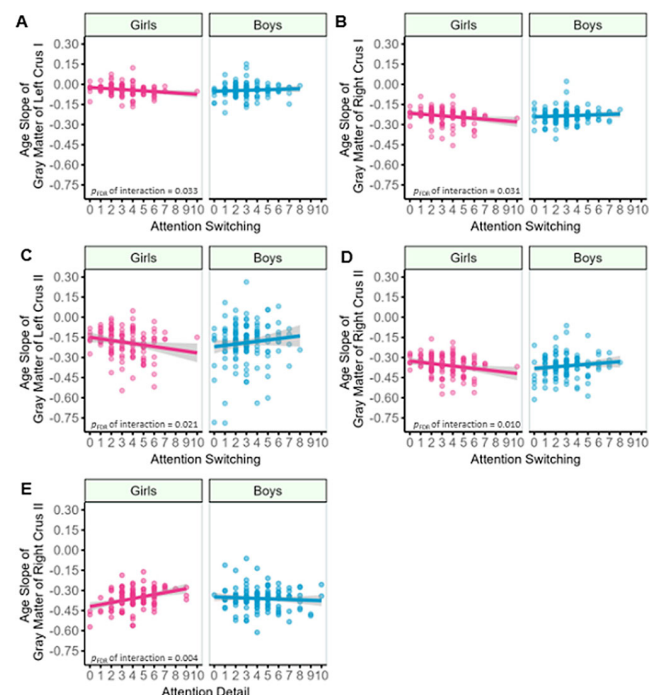


Figure.1

**Image 2:**

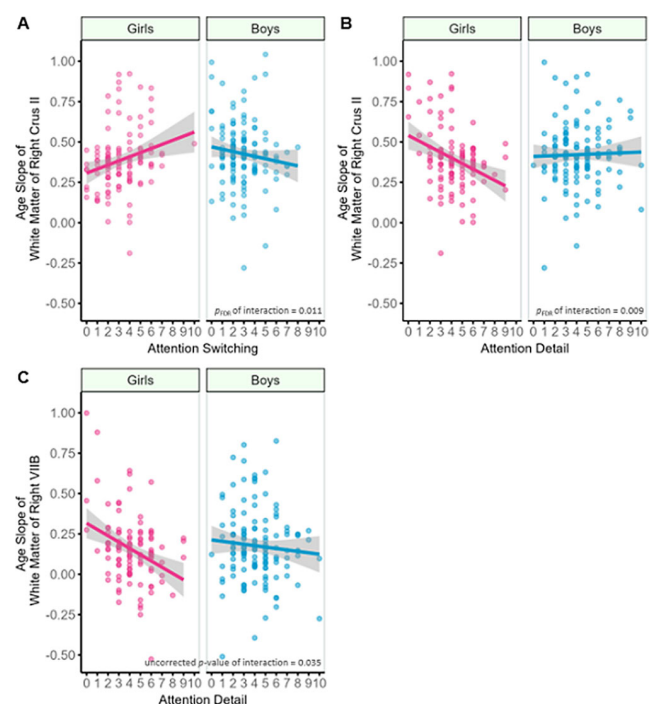


Figure.2