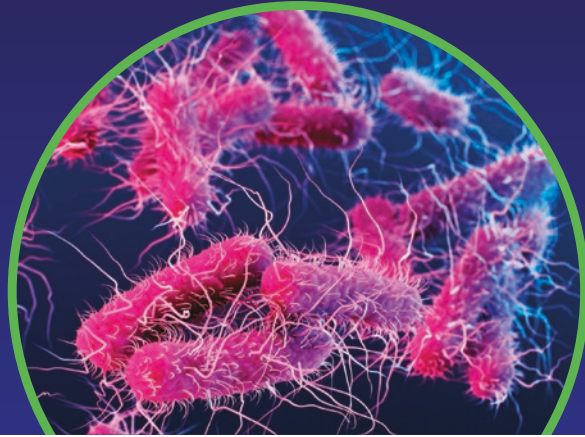


ASHE

Antimicrobial Stewardship & Healthcare Epidemiology



The Society for Healthcare Epidemiology (SHEA) and Cambridge University Press are pleased to announce the launch of a new, open access journal, *Antimicrobial Stewardship and Healthcare Epidemiology (ASHE)*.

ASHE will publish submissions of original research that will contribute to the fields of antimicrobial stewardship, healthcare epidemiology and infection prevention with the goal of improving healthcare safety globally.

[cambridge.org/ashe](https://doi.org/10.1017/ice.2025.10227)



CAMBRIDGE
UNIVERSITY PRESS

CS Medical



TPorter®
TEE TRANSPORT DEVICE

TEEClean®

CleanShield®

Complete Probe Reprocessing

A standardized, evidence-based guidelines approach to the reprocessing of TEE ultrasound probes improves quality, reduces variations, and controls cost in a variety of areas, from patient care to supply chain to overall departmental revenue management.

Learn more at [csmedicalllc.com](https://www.csmedicalllc.com)

www.csmedicalllc.com

CS Medical

877.255.9472

CSAD.0035.220113