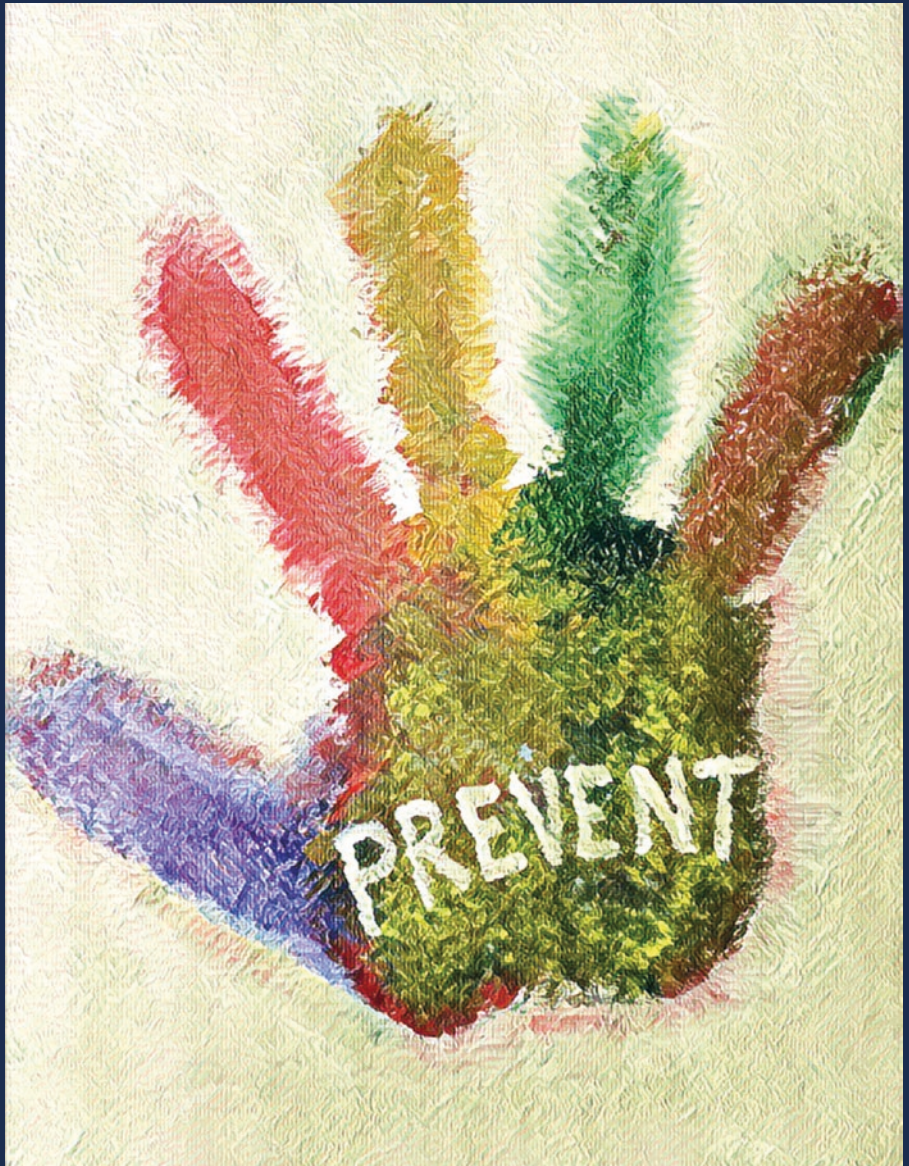


Infection Control & Hospital Epidemiology

Volume 45, No 12
December 2024

ICHE



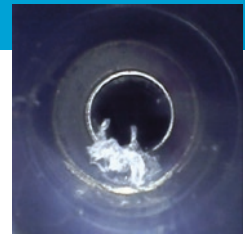
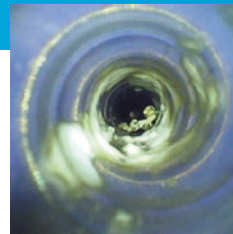
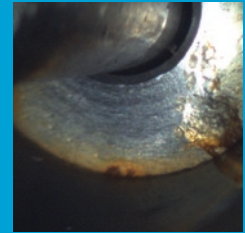
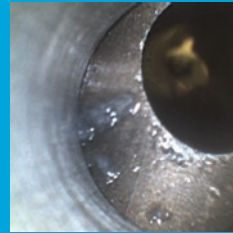
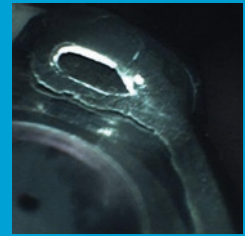
Artist: Michael Calderwood

Flexible Inspection Scope: FIS-007

Visually Inspect Small Lumens with Remarkable Clarity

Designed to inspect internal channels of potentially soiled or damaged items, the Flexible Inspection Scope provides enhanced light, vision & magnification.

hmark.com
800.521.6224



**Interchangeable Flexible Inspection
Scope attachments are available in
varying diameters & lengths**

CT-101: 1.9mm Diameter, 110cm Length

CT-102: 1.06mm Diameter, 110cm Length

CT-103: 1.9mm Diameter, 60cm Length

CT-104: 1.9mm Diameter, 200cm Length



Scope Viewer Software: For Documentation of Photo & Video



Capture Images



Record Video



Simple Interface

Scope Viewer Software allows you to easily capture and save photos and videos with the Flexible Inspection Scope. An image reference window also allows the user to display a previously saved image to reference alongside of the live view of an item being inspected.

NEW! WatchDog Endo AI

When used in conjunction with the Flexible Inspection Scope, this artificial intelligence software identifies anomalies within the working channel, such as scratches, crimps, stains, and moisture droplets.

Interested in learning more? Contact us!

CONTENTS

Commentary

- 1373** Highly pathogenic avian influenza: considerations for healthcare settings
Lauren Epstein and Shira Doron

Original Articles

- 1378** Antimicrobial-resistant central line-associated bloodstream infections in adult intensive care units: findings from an Australian surveillance network, 2011–2022
Lyn-li Lim, Kang Wei Esther Lim, Michael J. Malloy, Ann Bull, Judith Brett and Leon J. Worth
- 1385** Assessing for race, ethnicity, and socioeconomic disparities in central line-associated bloodstream infection risk in a large academic health system
Lindsey B. Gottlieb, Radhika Prakash-Asrani, William Dube, Zanthia Wiley, Giancarlo Licitra and Scott K. Fridkin
- 1391** Clinical characteristics associated with hospital-onset bacteremia and fungemia among cancer and transplant patients
Kalvin C. Yu, John C. O'Horo, ChinEn Ai, Molly Jung and Samantha Bastow
- 1399** Postoperative wound care protocol prevents surgical site infection after craniotomy
Mariya Kovryga Kornick, Eunjung Lee, Lisa Wilhelm, Janice White, Oh-Hyun Cho, Michelle Paff, Frank P.K. Hsu, Jefferson Chen, Linda Dickey and Susan S. Huang
- 1405** Impact of universal masking in reducing the risk of nosocomial respiratory viruses among people with cancer
Judy Yan, Tara McClure, Anoshé Aslam, Tania Bubb, N. Esther Babady, Shauna Usiak and Mini Kamboj
- 1410** A survey of healthcare workers on the acceptance and value of personal protective equipment for patient care
Gregory M. Schrank, Lyndsay M. O'Hara, Lisa Pineles, Saskia Popescu, Jessica P. Brown, Larry Magder and Anthony D. Harris
- 1415** Risk of invasive MDRO infection in MDRO-colonized patients
Ali M. Alshubaily, Aeshah S. Alosaimi, Bushra I. Althothli, Sahar I. Althawadi and Salem M. Alghamdi
- 1420** Multicenter study on *Clostridioides difficile* infections in Mexico: exploring the landscape
Daniel De-la-Rosa-Martinez, Diana Vilar-Compte, Nancy Martínez-Rivera, Eric Ochoa-Hein, Rayo Morfin-Otero, María Esther Rangel-Ramírez, Pamela Garciadiego-Fossas, Juan Luis Mosqueda-Gómez, Ana Patricia Rodríguez Zulueta, Isaí Medina-Piñón, Rafael Franco-Cendejas, Christian Gerardo Alfaro-Rivera, Norma Eréndira Rivera-Martínez, Jonathan Mendoza-Barragán, Alicia Estela López-Romo, Marisol Manríquez-Reyes, David Humberto Martínez-Oliva, Samantha Flores-Treviño, Jhoan M Azamar-Marquez, Lirio Nathali Valverde-Ramos, José Raúl Nieto-Saucedo, Sara Alejandra Aguirre-Díaz, Adrián Camacho-Ortiz and on behalf of the Mexican C. difficile Study Group

- 1428** Examining the impact of the COVID-19 pandemic on hospital-associated *Clostridioides difficile* infection
Michael J. Ray, Jon P. Furuno, Luke C. Strnad, Eric T. Lofgren and Jessina C. McGregor
- 1435** Comparing rates of recurrent infection for first occurrence of *Clostridioides difficile* between tapered oral vancomycin and standard vancomycin: a retrospective, propensity matched cohort study
Sarah E. Moore, Matthew Song, Elena A. Swinger, Stephen Furmanek, Thomas Chandler, Dakota Smith, Martin T. Brenneman and Ashley M. Wilde
- 1442** Microbial burden on environmental surfaces in long-term care facilities: a quantitative analysis
William A. Rutala, Lauren M. Di Biase, Amy W. Powell, Maria F. Gergen, Emily E. Sickbert-Bennett, Hajime Kanamori and David J. Weber
- 1448** Improved use of antibiotics following implementation of antimicrobial stewardship in a neonatal intensive care unit
Arna Yr Karelsdottir, Thorunn Oskarsdottir, Olof Eir Hoffritz, Thordur Thorkelsson, Asgeir Haraldsson and Valtyr Thors
- 1455** Multifaceted implementation strategy to improve the evaluation of penicillin allergies in perioperative patients: a pre-post feasibility implementation study
Eileen J. Carter, Katherine Zavez, Carol Schramm, Meagan M. Zolla, Katelyn Baron and David B. Banach
- 1462** Changes in use of multiplex respiratory panel testing during the COVID-19 pandemic
Jonathan D. Baghdadi, Chih Chun Tung, J. Kristie Johnson, Daniel J. Morgan and Anthony D. Harris

Concise Communications

- 1468** Operationalizing an adverse event detection surveillance system to support antimicrobial stewardship activities: perceptions and insights from the SHEA research network
Hawra J. Al Lawati, Kimberly L. Harvey, Marlina Shin, Hillary Mull, Rebecca P. Lamkin, Samuel Golenbock, Dipandita Basnet-Thapa, Judith M. Strymish, Matthew Lee, Howard Gold, Matthew Bidwell Goetz and Westyn Branch-Elliman
- 1472** Validation of electronic health record data to identify hospital-associated *Clostridioides difficile* infections for retrospective research
Michael J. Ray, Kathleen L. Lacanilao, Maela Robyne Lazaro, Luke C. Strnad, Jon P. Furuno, Kelly Royster and Jessina C. McGregor
- 1475** Impacts of indoor masks wearing on air contamination during 10-minute speaking in patients with SARS-CoV-2 omicron variant infection
Se Yoon Park, Min-Chul Kim, Ji Yeun Kim, Joung Ha Park, Seongman Bae, Jin-Won Chung, Saerom Yun, Minki Sung and Sung-Han Kim
- 1478** The impact of statewide educational webinars on infection prevention and control knowledge and policy updates in acute and long-term care facilities during the COVID-19 pandemic: the Nebraska experience
Daniel M. Brailita, Mounica Soma, Rebecca Martinez, Laura Tyner, Josette McConville, Juan Teran Plasencia, Matthew Donahue and Muhammad Salman Ashraf

Research Brief

- 1482** Risk factors for healthcare-associated infection among patients hospitalized with COVID-19 infection
Kenneth E. Sands, E. Jackie Blanchard, Adam Hasse, Kimberly Korwek and Michael Cuffe

Letter to the Editor

- 1484** Integrating an industrial hygienist into the infection prevention and control program
Angelique Dains, Spencer Baker, Takaaki Kobayashi, Stephanie Holley, Daniel Diekema and Karen Brust

An Official Publication of the Society for Healthcare Epidemiology of America

EDITOR-IN-CHIEF

David P. Calfee, MD, MS • New York, NY, USA

DEPUTY EDITOR

David Weber, MD, MPH • Chapel Hill, NC, USA

ASSOCIATE EDITORS

Westyn Branch-Elliman, MD, MMSc • Boston, MA, USA

Tara N. Palmore, M.D., Washington, D.C.

Joshua K. Schaffzin, MD, PhD • Ottawa, ON, Canada

Trevor C. Van Schooneveld, MD • Omaha, NE, USA

STATISTICS CONSULTANTS

Jon P. Furuno, PhD • Portland, OR, USA

Jessina C. McGregor, PhD • Portland, OR, USA

MANAGING EDITOR

iche.managingeditor@shea-online.org

Lindsay MacMurray • Brooklyn, NY, USA

SOCIAL MEDIA EDITOR

Alexander J. Sundermann, DrPH, CIC, FAPIC,

Pittsburgh, PA, USA

PAST EDITORS, INFECTION CONTROL

Richard P. Wenzel, MD, Infection Control 1980-1987 (vols. 1-8)

PAST EDITORS, INFECTION CONTROL & HOSPITAL EPIDEMIOLOGY

Richard P. Wenzel, MD, 1988-1992 (vols. 9-13)

Michael D. Decker, MD, 1993-2001 (vols. 14-22)

Barry M. Farr, MD, 2000-2004 (vols. 23-25)

William R. Jarvis, MD, 2005-2006 (vols. 26 and 27)

Suzanne F. Bradley, MD, 2007-2021 (vols. 28-42)

EDITORIAL ADVISORY BOARD

Deverick Anderson, MD, MPH • Durham, NC, USA

Anucha Apisarnthanarak, MD • Pratumthani, Thailand

Lennox Archibald, MD, FRCP • Alachua, FL, USA

Jo Anne Bennett, RN, PhD • New York, NY, USA

David Birnbaum, PhD, MPH • Sidney, BC, Canada

Yehuda Carmeli, MD, MPH • Tel Aviv, Israel

Vincent C.C. Cheng, MBBS, MD. • Hong Kong, China

Christopher Crnich, MD, MS • Madison, WI, USA

Erika D' Agata, MD, MPH • Providence, RI, USA

Daniel Diekema, MD • Portland, ME, USA

Elizabeth Dodds Ashley, PharmD • Durham City, NC, USA

Curtis J. Donskey, MD • Cleveland, OH, USA

Charles E. Edmiston, Jr., PhD • Milwaukee, WI, USA

Katherine Ellingson, PhD • Tucson, AZ, USA

Charlesnika T. Evans, PhD • Chicago, IL, USA

Mohamad Fakih, MD, MPH • Grosse Pointe Woods, MI, USA

Jeffery Gerber, MD, PhD • Philadelphia, PA, USA

Dale N. Gerding, MD • Hines, IL, USA

Donald A. Goldmann, MD • Boston, MA, USA

Nicholas Graves, PhD • Singapore, Singapore

Donna Haiduven, PhD, RN, CIC, CPH, FAPIC • Tampa, FL, USA

Anthony D. Harris, MD, MPH • Baltimore, MD, USA

David K. Henderson, MD • Bethesda, MD, USA

Elizabeth Henderson, PhD • Calgary, AB, Canada

Loreen A. Herwaldt, MD • Iowa City, IA, USA

John A. Jernigan, MD, MS • Atlanta, GA, USA

Robin L.P. Jump, MD, PhD • Cleveland, OH, USA

Mini Kamboj, MD • New York, NY, USA

Carol A. Kauffman, MD • Ann Arbor, MI, USA

Michael Klompas, MD • MPH, Boston, MA, USA

Sarah Krein, RN, PhD • Ann Arbor, MI, USA

Karl Madaras-Kelly, PharmD • MPH, Boise, ID, USA

Eric T. Lofgren, MS, PhD • Pullman, WA, USA

Jasmine R. Marcelin, MD • Omaha, NE, USA

Allison McGeer, MD • Toronto, ON, Canada

Leonard A. Mermel, DO, ScM • Providence, RI, USA

Linda Mundy, MD • Collegeville, PA, USA

Ann-Christine Nyquist, MD, MSPH • Aurora, CO, USA

Pierre Parneix, MD • Bordeaux, France

Jan Evans Patterson, MD • San Antonio, TX, USA

David A. Pegues, MD • Philadelphia, PA, USA

Didier Pittet, MD, MS • Geneva, Switzerland

Anusha Rohit, MD, PhD • Dip RCPATH, Chennai, India

William A. Rutala, PhD, MPH • Chapel Hill, NC, USA

Lisa Saiman, MD, MPH • New York, NY, USA

Sanjay Saint, MD, MPH • Ann Arbor, MI, USA

Marin Schweizer, PhD • Madison, WI, USA

Lynne M. Schulster, PhD • Atlanta, GA, USA

John A. Sellick, DO • Amherst, NY, USA

Erica S. Shenoy, MD, PhD • Boston, MA, USA

Anna C. Sick-Samuels, MD, MPH • Baltimore, MD, USA

Rachel B. Slayton, PhD, MPH • Atlanta, GA, USA

Xiaoyan Song, PhD, MBBS, CIC • Washington, DC, USA

Arjun Srinivasan, MD • Atlanta, GA, USA

Kurt Stevenson, MD • MPH, Boise, ID, USA.

Nimalie Stone, MD • Atlanta, GA, USA

Thomas Talbot, MD MPH, • Nashville, TN, USA

Paul Tambyah, MBBS • Singapore

William Trick, MD • Chicago, IL, USA

Antoni Trilla, MD, PhD • Barcelona, Spain

Kavita Trivedi, MD • Alameda County Public Health

Department, San Leandro, CA, USA

Robert A. Weinstein, MD • Chicago, IL, USA

Marcus Zervos, MD • Detroit, MI, USA

Infection Control & Hospital Epidemiology (ISSN 0899-823X) is published monthly by Cambridge University Press, One Liberty Plaza, New York, NY 10006, USA. Printed by Sheridan, a CJK Group Company.

Editorial Office

Communications should be addressed to the Editor, *Infection Control & Hospital Epidemiology*, One Liberty Plaza, New York, NY 10006 (email: iche.managingeditor@cambridge.org). Contributors should consult the Instructions for Contributors, which is available at the journal's Web site.

Advertising

Please direct advertising inquiries to M. J. Mrvica Associates, 2 West Taunton Avenue, Berlin, NJ 08009 (e-mail: mjmrvica@mrvica.com; telephone: 856-768-9360, fax: 856-753-0064). Publication of an advertisement in *Infection Control & Hospital Epidemiology* does not imply endorsement of its claims by the Society for Healthcare Epidemiology of America, by the Editor, or by Cambridge University Press.

Permissions

Articles may be copied or otherwise reused without permission only to the extent permitted by Sections 107 and 108 of the US Copyright Law. Permission to copy articles for personal, internal, classroom, or library use may be obtained from the Copyright Clearance Center (<http://www.copyright.com>,

email: info@copyright.com). For all other uses, such as copying for general distribution, for advertising or promotional purposes, for creating new collective works, or for resale, please contact Cambridge University Press. Full details may be found at: www.cambridge.org/about-us/rights-permissions.

Subscriptions

The individual subscription prices for 2024 are: Print & Online: \$353; Online Only: \$284. Individuals have the option to order directly from Cambridge University Press. Institutional print + electronic and e-only subscriptions are available from Cambridge University Press and include unlimited online access; rates are tiered according to an institution's type and research output and may be reviewed at the journal's homepage on Cambridge Core: cambridge.org/ICHE.

Please direct subscription inquiries and requests for back issues to Customer Services at Cambridge University Press, e-mail: subscriptions_newyork@cambridge.org (USA, Canada, and Mexico) or journals@cambridge.org (outside of USA, Canada, and Mexico).

Postmaster: Send address changes to *Infection Control & Hospital Epidemiology*, Cambridge University Press, One Liberty Plaza, New York, NY 10006 USA.

About the cover:



Title: *In Our Hands*, 2023

Artist: Michael Calderwood, MD, MPH

Medium: Acrylic paints on canvas

Dr. Calderwood spoke to ICHE about his artwork.

What was the inspiration for this artwork? Over the years, there have been many campaigns to improve hand hygiene in health care facilities (e.g., “Clean Hands Save Lives,” “My Health is in Your Hands,” “Speak up for Clean Hands”). During the past few years, though, the concept of the hand has taken on other meanings, as those in the healthcare community have lent a hand across a myriad of settings, have held the hand of patients, family, friends, and fellow healthcare workers who were suffering, and have stood hand-in-hand in facing the unknown, overcoming obstacles, and navigating the path forward. A hand held in an upward position, as shown in the painting, is also a means of saying “stop” or more specifically “prevent” as written on the palm. Whether it be in areas of HAI prevention, antimicrobial stewardship, outbreak investigation, diagnostic stewardship, or one of the many other topics covered within the pages of ICHE, the idea of prevention is one where safe and effective patient care is front and center in everything that we do. We are strongest when we work together toward a better future, recognizing that we each have something to teach, and we each have something to learn. As for the colors chosen in my art, many of our infection prevention strategies are targeted at infections involving blood, urine, wounds, stool, and water. You will see these each depicted, melding into a singular patina reminding us once again to wash our hands, as clean hands really do save lives.

What is your personnel connection to the content of ICHE? I am an active member of the Society for Healthcare Epidemiology of America (SHEA), having served on multiple committees, including the Publications Committee. I am both an author and a reviewer for ICHE. Recently, I was lead author on the 2022 update of the surgical site infection prevention section of the Compendium of Strategies to Prevent Healthcare-Associated Infections in Acute Care Hospitals. I have served in leadership roles in hospital epidemiology and antimicrobial stewardship, and I currently oversee both disciplines in my role as Chief Quality Officer at Dartmouth Hitchcock Medical Center.

Dr. Calderwood is the Chief Quality Officer for Dartmouth Hitchcock Medical Center in Lebanon, New Hampshire, USA. He is an Associate Professor of Medicine at the Geisel School of Medicine at Dartmouth and a staff physician in Infectious Disease & International Health.

Cover image: *In Our Hands*, 2023