


RESEARCH ARTICLE

Investigating aspects of paternalistic leadership within the job demands–resources model

Michelle Chin Chin Lee¹ , Yun Jian Kee², Samantha Shi Yea Lau² and Ghulam Jan³

¹School of Psychology, Massey University, 0632, Albany, Auckland, New Zealand, ²Department of Psychology, Sunway University, 47500, Petaling Jaya, Selangor, Malaysia and ³Department of Management Sciences, University of Turbat, 92610, Turbat, Balochistan, Pakistan

Author for correspondence: Michelle Chin Chin Lee, E-mail: mlee2@massey.ac.nz

(Received 30 June 2022; revised 31 October 2022; accepted 13 December 2022)

Abstract

The literature on the job demands–resources (JD-R) theory has flourished for the past decade due to the theory's simplicity and its applications in many areas of work life. However, the literature is lacking on how leaders can utilize this theory to manage employees, especially in the Asian leadership context. Using the JD-R theory, the current study investigated each aspect of paternalistic leadership (i.e., benevolent leadership, authoritarian leadership and moral leadership) and its influence on employees' job resources (i.e., work meaningfulness and influence at work), job demands (i.e., emotional and cognitive demands), work engagement, burnout and the processes involved. Four hundred and thirty-one (431) full-time working employees (mean age: 31.58; female: 57.8%) from various organizations in Malaysia participated in the study. Using structural equation modelling, the study's results showed that the benevolent aspect of paternalistic leadership was related to higher work engagement and lower burnout through work meaningfulness (but not through influence at work). In contrast, the authoritarian aspect of paternalistic leadership was related to higher burnout through emotional demands (but not through cognitive demands), while the moral leadership aspect had no significant relationship to employees' job demands or job resources, with a mediation process not found in either relationship. Overall, the study revealed three contrasting mechanisms for each aspect of paternalistic leadership and suggested how paternalistic leadership may be practised in Asian countries.

Key words: Burnout; cognitive demands; emotional demands; influence at work; JD-R theory; Malaysia; paternalistic leadership; work engagement; work meaningfulness

Introduction

Statistics have shown that employee disengagement costs US organizations \$550 billion annually (Clack, 2020) while employee burnout costs organizations \$300 billion annually globally (Bretland & Thorsteinsson, 2015). This signifies a serious concern for organizations in addressing productivity loss. The job demands–resources (JD-R) theory (Schaufeli & Bakker, 2004) has been widely researched in the past two decades in relation to work engagement and burnout. It shows two distinctive pathways where the motivational pathway shows the presence of job resources lead to higher work engagement while the health-erosion pathway shows the presence of job demands lead to higher burnout.

While the theory has been shown to reflect important aspects that drive employee job performance, recent studies have begun to expand the theory and search for antecedents that promote or hinder job demands and job resources. In particular, leadership is highly related to

© The Author(s), 2023. Published by Cambridge University Press in association with the Australian and New Zealand Academy of Management. This is an Open Access article, distributed under the terms of the Creative Commons Attribution licence (<https://creativecommons.org/licenses/by/4.0/>), which permits unrestricted re-use, distribution, and reproduction in any medium, provided the original work is properly cited.

employee behaviour and work outcomes (Lee & Ding, 2020). While many neo-charismatic theories (e.g., transformational, charismatic and transactional leadership) and newer leadership styles have been investigated, they are mostly investigated in Western countries (Kelloway, Turner, Barling, & Loughlin, 2012). The studies conducted on leadership within the Asian context (Sim, Lee, Kwan, & Tuckey, 2021) raise a few issues.

Firstly, the organizational dynamics within Asian work contexts are relationship-focused with a strong emphasis on adherence to authority (Hofstede, 2011). Work values across cultures have been widely used to explain differences in work attitudes and outcomes between Asian and Western cultures (e.g., Noordin & Jusoff, 2010; Schermerhorn & Bond, 1997). Whereas Westerners tend to be more individualist, Asian culture tends to be more group-oriented (Hofstede, 2011). One meta-analysis on leadership studies reported that at least 294 of 1,050 published studies (across 10 top-tier journals from 2000 to 2012) studied neo-charismatic theories, while only 32 were conducted on cross-cultural leadership approaches such as paternalistic leadership (Dinh, Lord, Gardner, Meuser, Liden, & Hu, 2014). This signifies the lack of studies conducted within the Asian context.

Secondly, the JD-R theory with the inclusion of leadership mostly only investigated western leadership styles such as authentic leadership (Adil & Kamal, 2020) and servant leadership (Kaltiaainen & Hakanen, 2022). As the JD-R theory literature has no studies relating to paternalistic leadership, our understanding of the JD-R theory is limited and remains a 'black hole' as far as leadership in the Asian context is concerned, even though Asians constitute 60% of the world's population (Ramachandran, Snehalatha, Shetty, & Nanditha, 2012). Therefore, more studies are needed on Asian leadership styles, such as paternalistic leadership, within the JD-R theory.

Underpinning the JD-R theory as the foundation of this study, the current study investigated the role of job demands and job resources in mediating the relationships between paternalistic leadership and work engagement and burnout. The study investigated influence at work and work meaningfulness as critical job resources in driving human capital development amid the rapid transformation of technology. Emotional and cognitive demands were investigated as job demands as they are reflective of the current industrial revolution of industry that is demanding high emotional and cognitive workloads. The findings of the current study aim not only to expand the existing literature on paternalistic leadership within the JD-R theory but also to extend the currently understudied understanding within the Asian context.

This study makes a threefold contribution to the current literature. The findings provide a stepping stone to future studies on the JD-R theory especially on Asian leadership within Asian countries. Paternalistic leadership, which originated from Taiwan, is seen to share the same belief in values in the leader–employee relationship. Hence, the current study firstly confirmed the applicability of the role of paternalistic leadership in other Eastern countries such as Malaysia (Erben & Guner, 2008). Secondly, following the specific pathways within the JD-R theory, the study expanded on aspects of paternalistic leadership based on its push (i.e., authoritarian) and pull (i.e., benevolent and moral) elements. This provides further guidance for human resource practitioners on how to manage this leadership style. Finally, by including the human aspects of the JD-R theory, the study offers additional insights for situations in which employees and leaders are close, yet distant, in the dynamics of their relationships. The mediational analyses allow us to understand the mechanism behind these processes. This enhances our understanding of the behaviour and function of workplaces in Asian countries (Noordin & Jusoff, 2010).

In this paper, we first introduce the concept of paternalistic leadership in relation to the JD-R theory. The development of the research hypotheses and conceptual framework are then discussed, as well as the quantitative research method design. Next, we report the results from the hypotheses testing. In the following section, the study's findings, its strengths, limitations and future research direction are discussed. Finally, we elaborate the study's theoretical and practical implications and draw the study's conclusion. Our proposed model is presented in Figure 1 below.

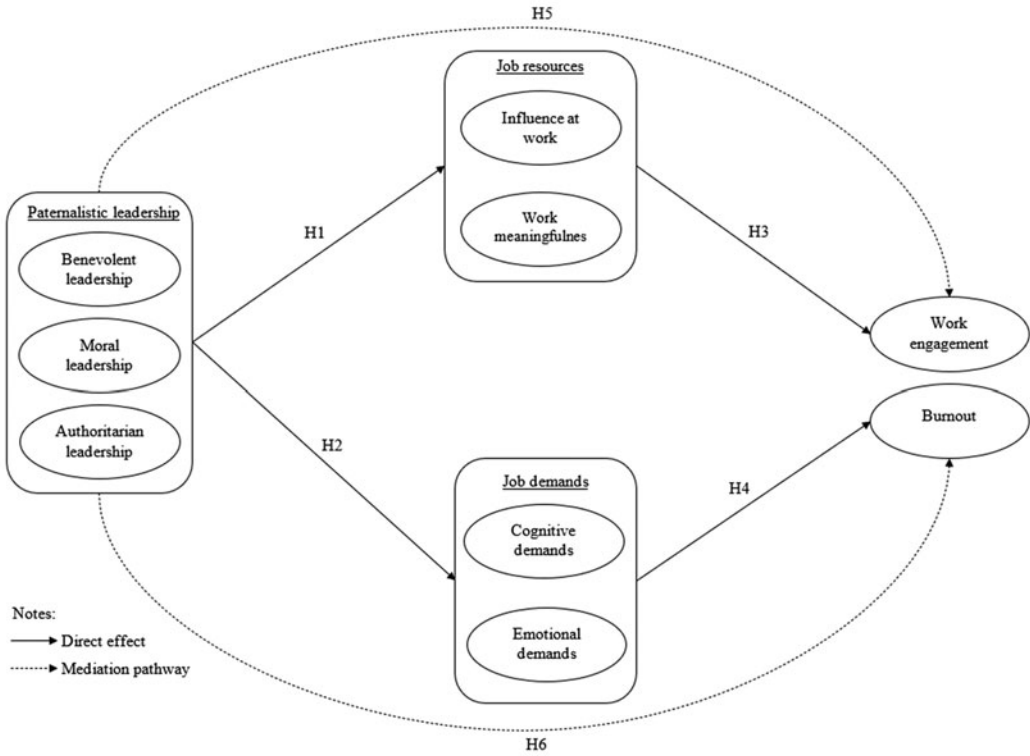


Figure. 1. Proposed model.

Review of the literature and hypotheses development

Paternalistic leadership, job demands and job resources

Paternalistic leadership is defined as ‘a style that combines strong discipline and authority with fatherly benevolence and moral integrity couched in a personalistic atmosphere’ (Farh & Cheng, 2000: 84). It comprises three aspects: authoritarian leadership, benevolent leadership and moral leadership. Authoritarian leadership refers to the leadership behaviour of asserting a strong sense of authority and control over subordinates and demanding absolute obedience from them. On the other hand, benevolence refers to the leadership qualities that demonstrate individualized, holistic concern for subordinates’ personal and familial well-being, similar to that shown by a father-like figure. Meanwhile, moral leadership refers to a leader who acts in a way that demonstrates a superior moral character and integrity through unselfish acts and leading by example (Chen, Eberly, Chiang, Farh, & Cheng, 2014; Cheng, Chou, Wu, Huang, & Farh, 2004). It is a unique leadership style where it shares similarities with transformational and participative leadership across cultures, and authoritarian and nurturant-task leadership in hierarchical and collectivistic cultures (Aycan, Schyns, Sun, Felfe, & Saher, 2013), encompassing both human-centred and transactional leadership (Leclerc, Kennedy, & Campis, 2021).

It has been suggested that benevolent leadership tends to create a conducive or psychologically safe environment by providing more influence or choice for employees to master their craft at the workplace which, in turn, promotes positive work outcomes (Wang & Cheng, 2010). In contrast, the authoritarian aspect of paternalistic leadership, which involves control over and obedience from followers, does not empower employees (i.e., does not provide them with opportunities to present their solutions or with the freedom to perform a task using their own method)

(Chan, Huang, Snape, & Lam, 2013; Chen et al., 2014). Finally, moral leadership focuses on the values that leaders follow and promote, and to which they adhere (Farh & Cheng, 2000). Paternalistic leadership has been defined as a leadership style that combines both strong discipline and authority, while incorporating fatherly-like behaviour that provides care towards employees' personal lives and caters to their needs (Chen et al., 2014; Cheng et al., 2004), as well as becoming the role model for justice in an organization (Erben & Guner, 2008).

Benevolent leadership has been found to lead to a higher level of influence at work among employees (Wang & Cheng, 2010). Employees' influence at work is derived from the empowerment given by leaders (e.g., encouraging employees to facilitate self-leadership and to participate in goal setting or strategies, and through providing a self-reward system) (Chan, 2017). Through providing employees with influence at work, the criterion of having a sense of autonomy is fulfilled. This may increase their intrinsic motivation and is aligned to self-determination theory (Ryan & Deci, 2000), particularly the autonomy component. In addition, benevolent leadership displays virtue and compassion towards employees, thus creating higher work meaningfulness among them (Karakas & Sarigollu, 2013).

Extensive research has been conducted on the effects of paternalistic leadership on employees' burnout (e.g., Çetin, Toylan, Çakırel, & Çakırel, 2017; Hiller, Sin, Ponnappalli, & Ozgen, 2019), but a lack of research is evident on how aspects or mechanisms of leadership lead to significant outcomes, and what and which aspects or mechanisms do so. We argue that paternalistic leadership is viewed as being inflexible, controlling and unwilling to experiment with innovative ideas or to share information on work-related matters (Gu, Wang, Liu, Song, & He, 2018; Siddique & Siddique, 2019). This leads to employees lacking a sense of identification with the organization as their contribution is not valued by the organization's leaders.

The authoritarian aspect of paternalistic leadership often relates to the characteristic of a state of authority which enforces strict routines and demands on employees (Chan et al., 2013). These leaders' demands frequently cannot be disputed (Schermerhorn & Bond, 1997). By fulfilling leaders' directions and obligations, costly mistakes are thus avoided with such mistakes less tolerated in this type of collectivistic culture (Blunt, 1988; Lim, 2016). It is evident that unconditional obedience towards authority is expected from employees (Cheng et al., 2004). This becomes cognitively taxing to employees as they seek to deliver good work, while incurring high emotional costs to cope with these demands. Employees under this type of leadership experience an array of negative emotions at work (e.g., frustration or desperation in seeking to fulfil leaders' demands). Consequently, employees become emotionally challenged in sustaining job demands which require a high level of effort (Laila & Hanif, 2017). In essence, both cognitive and emotional demands are often exerted by leaders, requiring physiological or psychological effort from employees to sustain and maintain leaders' expectations.

It has been suggested that moral leadership increases employees' positive attitudes as they are provided with job resources such as job autonomy (Dhar, 2016) or work meaningfulness (Wang & Xu, 2019). Both the benevolence and morality aspects of paternalistic leadership have been known to mitigate the effects of leaders' authoritarian behaviour. Leaders' benevolence tends to foster in-group identity by providing personal care, with the leader acting as a fatherly-like figure (Chan et al., 2013), while moral leadership qualities demonstrate superior personal values which do not abuse authority for personal gain, and exemplify a person with decent personal and work conduct (Farh & Cheng, 2000).

These three aspects of paternalistic leadership (i.e., authoritarian leadership, benevolent leadership and moral leadership) mostly focus on a direction that is positive or negative. Based on past research, as paternalistic leadership aspects are comprised of contradictory roles, it is not considered a unified construct, being characterized by authoritarianism and its opposite on the continuum, benevolence, as well as morality (Chan et al., 2013). However, these aspects may occur at the same time (Erben & Guner, 2008). A brief search on Google Scholar on paternalistic leadership from 2004 to the current time shows it has been investigated 57 times, 40 of which

were investigated through its sub-components. Some researchers have argued that looking at paternalistic leadership through its sub-components may invite a paradoxical view on this leadership style (Pellegrini & Scandura, 2008), with strong support for the view that paternalistic leadership may display both push (i.e., authoritarian) and pull (i.e., benevolent and moral) elements (Cheng, Huang, & Chou, 2002). Thus, these sub-components of paternalistic leadership warrant an investigation within the JD-R theory.

In addition, we argue that within the spectrum of JD-R theory (Bakker & Demerouti, 2017), benevolent and moral leadership are associated with the motivational pathway while authoritarian leadership is associated with the health erosion pathway. Therefore, the contrasting role of paternalistic leadership may produce a mixed result on how employees' job resources and demands are provided by each aspect of paternalistic leadership. Hence,

Hypothesis 1: Benevolent and moral leadership (but not authoritarian leadership) are positively related to job resources.

Hypothesis 2: Authoritarian leadership (but not benevolent and moral leadership) is positively related to job demands.

Job demands, job resources, work engagement and burnout

The JD-R theory (Schaufeli & Bakker, 2004) provides a heuristic way for viewing how job characteristics influence the employee's work engagement and burnout and, subsequently, his/her job performance. Two pathways are specifically highlighted: the motivational pathway and the health erosion pathway. The motivational pathway proposes that the presence of job resources will increase the employee's work engagement, while the health erosion pathway proposes that the presence of job demands will increase his/her likelihood of burnout.

Job resources have been referred to as 'those physical, psychological, social, or organizational aspects of the job that either/or (1) reduce job demands and the associated physiological and psychological costs; (2) are functional in achieving work goals; (3) stimulate personal growth, learning and development' (Schaufeli & Bakker, 2004: 296).

It is suggested that job resources increase work engagement which has been described as 'a positive, fulfilling, work-related state of mind that is characterized by vigor, dedication, and absorption' (Schaufeli & Bakker, 2004: 295). When job resources are plentiful, in today's work life, the focus is on the needs of individuals, with employees placing the emphasis on how much influence they have at work and whether their work is meaningful.

While influence at work refers to the amount of control employees have at their work without being micro managed (Karasek, 1979), work meaningfulness is defined as the 'value of a work goal or purpose, judged in relation to an individual's own ideals or standards' (May, Gilson, & Harter, 2004). Both influence at work and work meaningfulness are important and function hand in hand, with work meaningfulness often existing when employees have control over their work tasks, which leads to higher empowerment in their daily tasks (Lee, Idris, & Delfabbro, 2017). Generally, labour which requires thought poses cognitive demands on employees who are valued as humans capable of innovative and creative solutions, with decision-making skills that cannot be replaced by technologies (Ghislieri, Molino, & Cortese, 2018).

Similarly, work meaningfulness has been found to be a compelling factor for employees to have higher organizational commitment and to be motivated to perform at work (Chalofsky & Krishna, 2009; Steger, Dik, & Duffy, 2012). In essence, influence at work often relates directly to the motivational pathway, while work meaningfulness promotes work values that are indirectly linked to higher motivation at work. Evidently, both of these job resources (i.e., influence at work and work meaningfulness) may contribute to the positive gains of work engagement of an individual through the motivational pathway (Bakker & Demerouti, 2008). Studies in many countries,

both Western and Eastern, have shown that job resources in the aspects of control at work and work meaningfulness increase work engagement (Roslan, Ho, Ng, & Sambasivan, 2015; Tuckey, Bakker, & Dollard, 2012). Thus, job resources providing autonomy and meaning as motivating factors at work have become critical in driving human capital development in the midst of the rapid transformation of technology.

The other pathway within the JD-R theory is the health erosion pathway where the presence of job demands is defined as ‘those physical, psychological, social or organizational aspects of the job that require sustained physical and/or psychological (i.e., cognitive or emotional) effort and are therefore associated with certain physiological and/or psychological costs’ (Schaufeli & Bakker, 2004: 296). Job demands have been stated to increase burnout which has been defined as a state of mental weariness (Schaufeli & Bakker, 2004). In the workplace revolution in which service jobs are overtaking industrial jobs, with ‘new tasks in which manual labour is replaced by thoughtful labour’ (Shulman & Olex, 1985: 98), the need to engage cognitively and emotionally with work tasks has become an important demand on which to focus.

Cognitive demands relate to job tasks that are meticulous in nature which require employees to focus on details and which are often multifaceted and difficult to perform. Emotional demands relate to emotionally draining job tasks which require the involvement of emotions due to constant interactions with recipients such as clients or colleagues in the completion of tasks (Heuven, Bakker, Schaufeli, & Huisman, 2006). While job demands may not always be negative (Bakker & Demerouti, 2017), meeting those demands may require high effort over time resulting in physiological or psychological costs such as emotional exhaustion or burnout (Demerouti, Bakker, Nachreiner, & Schaufeli, 2001).

Several studies have shown that high job demands lead to a high level of burnout. Cognitive demands were found to relate to mental exhaustion (Huyghebaert, Gillet, Lahiani, & Fouquereau, 2016), while mentally exacting and complex work tasks often predict burnout in employees (de Jonge & Dormann, 2006). Similar findings were also reported in Asian countries, with one recent study on Malaysian employees finding that specific emotional demands and physical demands lead to work-related burnout (Muhamad Nasharudin, Idris, & Young, 2020). These findings all displayed the health erosion pathway as predicted by the JD-R theory. Generally, the higher psychological effort required to sustain the leader’s demands often promotes negative emotions such as stress or anxiousness (Laila & Hanif, 2017). In fact, this perceived negative array of emotions, and the inability to manage them, has been shown to be the key factor to burnout (Schaufeli, Taris, & Van Rhenen, 2008). Therefore, we propose that job resources and job demands will have a direct and positive impact on work engagement and burnout, as formulated in the following hypotheses:

Hypothesis 3: Job resources are positively related to work engagement.

Hypothesis 4: Job demands are positively related to burnout.

Job resources as a mediator between paternalistic leadership and work engagement

Leadership has been considered as one of the important antecedents in influencing employees’ work processes through job resources and job demands. In the current context, paternalistic leadership, consisting of consideration, care and integrity (i.e., benevolent and moral aspects of paternalistic leadership but not the authoritarian aspect), has been known to provide job resources to employees such as promoting employees’ influence at work (Dhar, 2016; Wang & Cheng, 2010) and work meaningfulness (Karakas & Sarigollu, 2013; Wang & Xu, 2019), thus predicting a higher level of employees’ work engagement (Cenkci & Özçelik, 2015; Öge, Çetin, & Top, 2018). In the current study, we explain how paternalistic leadership serves as an antecedent to the provision of job resources and job demands within the JD-R theory, hence activating both the motivational and health erosion pathways.

We argue that the benevolent aspect of paternalistic leaders is useful in activating the motivational pathway. Higher work engagement by employees can result from paternalistic leaders who provide them with a decent amount of care and support (Cenkci & Özçelik, 2015; Öge, Çetin, & Top, 2018). This supports the above notion that when psychological needs for influence at work and finding work meaningful are supported by leaders, employees often respond favourably by exhibiting higher levels of work engagement even within the confines of a culture of obedience and adherence to instruction (Shu, 2015). This is further supported under the influence of benevolent leaders through which employees are found to increase their compliance and work motivation towards their leaders' demands. Therefore, the effects of benevolent and moral leaders (but not authoritarian leaders) on work engagement may be observed via the motivational pathway through job resources (i.e., influence at work and work meaningfulness).

In relation to authoritarian leadership, we argue that it would have a negative relationship with the motivational pathway. A high level of respect for authority is found especially in a culture of high collectivism which is high in power distance. In other words, employees are expected to show unreserved loyalty and compliance towards their leader (Rockstuhl, Dulebohn, Ang, & Shore, 2012). In a 'no questioning' context, authoritarian leadership will have negative relationships with lower levels of job resources and work engagement (Cenkci & Özçelik, 2015; Shu, 2015).

Overall, it has been suggested that paternalistic leadership tends to provide a holistic concern for employees, but at the expense of their liberty (Erben & Guneser, 2008). As explained above, aspects of paternalistic leadership function differently in the motivational pathway. Hence,

Hypothesis 5: Job resources mediate the relationship between paternalistic leadership and work engagement.

Job demands as a mediator between paternalistic leadership and burnout

Similarly, looking at the health erosion pathway, benevolent leadership endorses a genuine and caring nature towards employees and often acts as a fatherly-like figure, with this expected to develop a sense of respect, gratitude, indebtedness and liking (Chan et al., 2013). Consequently, positive emotions or reactions arising from the benevolent aspect of paternalistic leadership are found to be effective in promoting a lower level of job demands and better well-being (Chen et al., 2014; Farh & Cheng, 2000). Similar reactive patterns can be found with moral leadership, with this type of leadership providing a sense of justice by 'walking the talk' of being a moral leader among employees.

As reported in a previous study about the distinctive characteristics of paternalistic leadership, authoritarian leaders tend to promote the use of rules, with their demands possibly resulting in higher cognitive and emotional costs from employees (Laila & Hanif, 2017). The negative state of affairs thus experienced by employees is characterized by anxiety or anger (Hiller et al., 2019). These negative emotions have been shown to have detrimental effects on employees' psychological well-being (Vecchio, 2000). Researchers have stated that negative emotions, such as stress or anxiousness, are some of the compelling factors that cause an individual to experience burnout (Schaufeli, Taris, & Van Rhenen, 2008). Hence,

Hypothesis 6: Job demands mediate the relationship between paternalistic leadership and work engagement.

Method

Participants

The current study employed a cross-sectional design with 431 employees (median age [M_{age}] = 31.58; standard deviation [SD] = 9.60) participating from 33 organizations within the service industry,

with more female participants ($N = 249$, 57.8%) than male participants. All participants were executive-level white-collar employees with desk tasks who had at least a bachelor's degree, been working in the organization and under the current leader for at least 3 months. The mean length of employees' work in the organization was 4.49 years ($SD = 5.96$), while the mean length of employees' work under the same leader was 3.26 years ($SD = 4.51$). Employees worked 46.18 h per week ($SD = 77.87$), while employees' mean income was Malaysian ringgit (RM) 3500.18 ($SD = 2086.97$).

The study was approved by the ethics board of the researchers' university. Organizations were approached by email using a list of organizations identified in Malaysia's small and medium enterprise database. Meetings were scheduled with the human resources (HR) manager of the interested organization to provide further briefing on the purpose of the study. The researcher then emailed copies of the informed consent form, a letter from the university approving the study and a link to the survey questionnaire. The instructions on the informed consent form made clear that participants' participation was entirely voluntary, and that confidentiality and anonymity were guaranteed. Each organization's HR manager then asked study participants to fill in the informed consent form and the online survey. Participants then returned the completed questionnaire to the HR manager in a sealed envelope, with the researchers and their research assistant returning to each organization to collect the completed questionnaires.

Instruments

Paternalistic leadership was measured using the 26 items from Cheng *et al.*'s (2004) paternalistic leadership scale which measures benevolent aspects (11 items), moral aspects (six [6] items) and authoritarian aspects (nine [9] items) of this leadership style. The scale ranged from '1' = strongly disagree to '6' = strongly agree. An example of a benevolent leadership item is as follows: 'My leader is like a family member when he/she gets along with us'. An example of a moral leadership item is as follows: 'My leader never avenges a personal wrong in the name of public interest when he/she is offended'. An example of an authoritarian leadership item is as follows: 'My leader asks me to obey his/her instructions completely'. In the previous study by these authors, they reported the reliability of the scale as follows: benevolent ($\alpha = .94$), moral ($\alpha = .90$) and authoritarian ($\alpha = .89$) (Cheng *et al.*, 2004). The current study reported the reliability and convergent validity as follows: benevolent (composite reliability [CR] = .93, average variance extracted [AVE] = .58), moral (CR = .83, AVE = .56) and authoritarian (CR = .84, AVE = .56).

Work engagement was measured using nine items from the Utrecht Work Engagement Scale (UWES-9) (Schaufeli, Bakker, & Salanova, 2006). The scale assessed the three factors of work engagement comprising vigour, dedication and absorption. The scale was on a 7-point range ('1' = never; '7' = every day). An example of the items is as follows: 'At my work, I feel bursting with energy'. The current study established the reliability and convergent validity of the scale (CR = .93, AVE = .64).

Burnout was measured using a 3-item scale (Diefendorff, Greguras, & Fleenor, 2016) rated on a 5-point range where 1 = strongly disagree and 5 = strongly agree. An example of the items is as follows: 'My job emotionally exhausts me'. Higher scores on this scale would indicate the higher level of burnout of an individual. The current study established the reliability and convergent validity of the scale (CR = .87, AVE = .69).

Influence at work was measured using four items from the Copenhagen Psychosocial Questionnaire (COPSOQ II) (Pejtersen, Kristensen, Borg, & Bjorner, 2010) which assesses various psychosocial work environment elements (e.g., demands at work, work organization and job contents, etc.). The influence scale, under the subscale of COPSOQ II (work organization and job contents), was used in the current study. The scale was measured on a 5-point range ('1' = never; '5' = always). One example of the items is as follows: 'Do you have a large degree of influence concerning your work?' The current study established the reliability and convergent validity of the scale (CR = .85, AVE = .66).

Work meaningfulness was measured using three items from the COPSOQ II (Pejtersen et al., 2010). The work meaningfulness scale, under the subscale of COPSOQ II (work organization and job contents) was used in the current study. The scale assessed the work meaningfulness experienced by an individual. The scale was measured on a 5-point range ('1' = never; '5' = always). One example of the items is as follows: 'Is your work meaningful?' The current study established the reliability and convergent validity of the scale (CR = .87, AVE = .69).

Cognitive demands were measured using four items from the COPSOQ II (Pejtersen et al., 2010). The cognitive demands scale, under the subscale of COPSOQ II (demands at work) was used in the current study. The scale assessed the cognitive demands of an individual at work. The scale was measured on a 5-point range, where '1' = never, '5' = always. An example of the items is as follows: 'Does your work require you to make difficult decisions?' The current study established the reliability and convergent validity of the scale (CR = .76, AVE = .61).

Emotional demands were measured using four items from the COPSOQ II (Pejtersen et al., 2010). The emotional demands scale, under the subscale of COPSOQ II (demands at work) was used in the current study. The scale assessed the emotional demands of an individual at work. The scale was measured on a 5-point range ('1' = never; '5' = always). An example of the items is as follows: 'Does your work put you in emotionally disturbing situations?' The current study established the reliability and convergent validity of the scale (CR = .89, AVE = .67).

The numbers inside brackets represent the original number of items. Values italicized diagonally across the table indicate the square root of AVE of the variables, while correlations below the respective square root of AVE show good discriminant validity (Hair, Sarstedt, Hopkins, & Kuppelwieser, 2014), as shown in this table: N (individual) = 431; * $p < .05$; and ** $p < .001$.

Analysis strategy

The overall test results were analysed through structural equation modelling using IBM's AMOS 27.0. A two-step approach wherein a measurement model was first fitted in a confirmatory factor analysis, followed by the testing of hypotheses in a structural model. Missing data (.0067% of total responses) were replaced using expectation-maximization imputation. The testing of assumptions, such as normality, homoscedasticity, linearity and multicollinearity (Hair et al., 2014), was conducted prior to the overall analyses.

Results

Descriptive analysis, correlations between all variables and reliability of the measures of the current study are shown in Table 1. All assumptions were met except for multivariate normality (kurtosis = 335.23, critical ratio [c.r.] = 58.60), in which bias-corrected and accelerated (BCa) bootstrapping at a 95% confidence interval (CI), employing 2,000 bootstrap samples, was used as remedy (Byrne, 2016). Furthermore, six multivariate outliers were removed to improve model fit.

Measurement model

A measurement model, comprising the following variables: benevolent leadership, moral leadership, authoritarian leadership, work engagement, burnout, influence at work, work meaningfulness, cognitive demands and emotional demands, was assessed. We followed recommendation by Kline (2015) on testing the model fit. The model would show a good fit if its ratio of chi-square score (χ^2) to degrees of freedom (df) was less than 3; if it had a comparative fit index (CFI) score of .90 and above; and if its root mean square error of approximation (RMSEA) was less than .08; its standardized root mean square residual (SRMR) was less than .08; and its p -value was less than .05 (Hair et al., 2014; Schreiber, Nora, Stage, Barlow, & King, 2006).

Table 1. Correlation matrix and square root of AVE of variables

Variables	1	2	3	4	5	6	7	8	9
1. Benevolent leadership	.76								
2. Moral leadership	.58**	.75							
3. Authoritarian leadership	−.12*	−.16*	.75						
4. Work engagement	.34**	.23**	−.01	.80					
5. Burnout	−.23**	−.18*	.34**	−.21**	.83				
6. Influence at work	.36**	.25**	.03	.32**	−.03	.81			
7. Work meaningfulness	.24**	.18*	−.01	.65**	−.22**	.33**	.83		
8. Cognitive demands	.19*	.18*	.15*	.27**	.22**	.45**	.36**	.78	
9. Emotional demands	.10	.01	.26**	.08	.47**	.41**	.10	.61**	.82

Note: * $p < .05$; ** $p < .001$.

The initial model did not show a good fit ($\chi^2 = 3,652.90$, $df = 1,289$, $\chi^2/df = 2.83$, CFI = .83, RMSEA = .07, SRMR = .07, $p < .001$). Therefore, to improve model fit, items with low loadings were removed one by one until a measurement model with an acceptable model fit was reached. Therefore, in total, 12 items were removed due to low factor loadings: one item from the benevolent leadership subscale; two items from the moral leadership subscale; five items from the authoritarian leadership subscale; one item from the work engagement scale; one item from the influence at work subscale; and two items from the cognitive demands subscale. The final model showed a good fit ($\chi^2 = 1,906.16$, $df = 743$, $\chi^2/df = 2.57$, CFI = .90, RMSEA = .06, SRMR = .06, $p < .001$). Figure 2 below represents the final measurement model.

Structural model

The proposed structural model did not show a good fit ($\chi^2 = 1,996.27$, $df = 754$, $\chi^2/df = 2.65$, CFI = .89, RMSEA = .06, SRMR = .08, $p < .001$). Thus, the model was re-specified through the addition of new regression paths by looking for the largest modification index (MI) and parameter change of regression weights between variables (Byrne, 2016). New regression paths were added to the model only if they make substantive theoretical sense (Gallagher, Ting, & Palmer, 2008). In total, four model re-specifications were made (i.e., benevolent leadership \rightarrow work engagement; benevolent leadership \rightarrow burnout; work meaningfulness \rightarrow burnout; authoritarian leadership \rightarrow burnout). The final re-specified model showed a good fit ($\chi^2 = 1,912.91$, $df = 750$, $\chi^2/df = 2.55$, CFI = .90, RMSEA = .06, SRMR = .06, $p < .001$).

Hypothesis 1 stated that benevolent and moral leadership (but not authoritarian leadership) are positively related to job resources. The study found that benevolent leadership was positively related to influence at work ($\beta = .33$, $p < .001$) and work meaningfulness ($\beta = .20$, $p = .003$). Moral leadership was not related to influence at work ($\beta = .07$, $p = .342$) nor to work meaningfulness ($\beta = .07$, $p = .331$). Authoritarian leadership was not related to influence at work ($\beta = .08$, $p = .159$) nor to work engagement ($\beta = .03$, $p = .650$). Hence, Hypothesis 1 was partially supported.

Hypothesis 2 stated that authoritarian leadership (but not benevolent and moral leadership) is positively related to job demands. The study found that authoritarian leadership was positively related to cognitive demands ($\beta = .19$, $p = .002$) and emotional demands ($\beta = .28$, $p < .001$). Benevolent leadership was not related to cognitive demands ($\beta = .13$, $p = .076$) but was negatively related to emotional demands ($\beta = .15$, $p = .021$). Moral leadership was not related to cognitive demands ($\beta = .14$, $p = .071$) nor to emotional demands ($\beta = -.03$, $p = .658$). Hence, Hypothesis 2 was partially supported.

Hypothesis 3 stated that job resources are positively related to work engagement. The study found that work meaningfulness was positively related to work engagement ($\beta = .59$, $p < .001$), but influence at work was not related to work engagement ($\beta = .06$, $p = .254$). Hence, Hypothesis 3 was partially supported.

Hypothesis 4 stated that job demands are positively related to burnout. The study found that emotional demands were positively related to burnout ($\beta = .43$, $p < .001$), but cognitive demands were not related to burnout ($\beta = .04$, $p = .561$). Hence, Hypothesis 4 was partially supported.

Mediation analyses

Mediation analyses were performed for Hypotheses 5 and 6 to test for the mediation effects of influence at work and work meaningfulness on the relationships between the three leadership types and work engagement (Hypothesis 5) as well as the mediation effects of cognitive demands and emotional demands on the relationships between the three leadership types and burnout (Hypothesis 6). The mediation effects of work meaningfulness on the relationships between the three leadership types and burnout were also tested. Indirect effects were estimated using a user-defined estimand called MyIndirectEffects for AMOS (Gaskin & Lim, 2018). The estimand

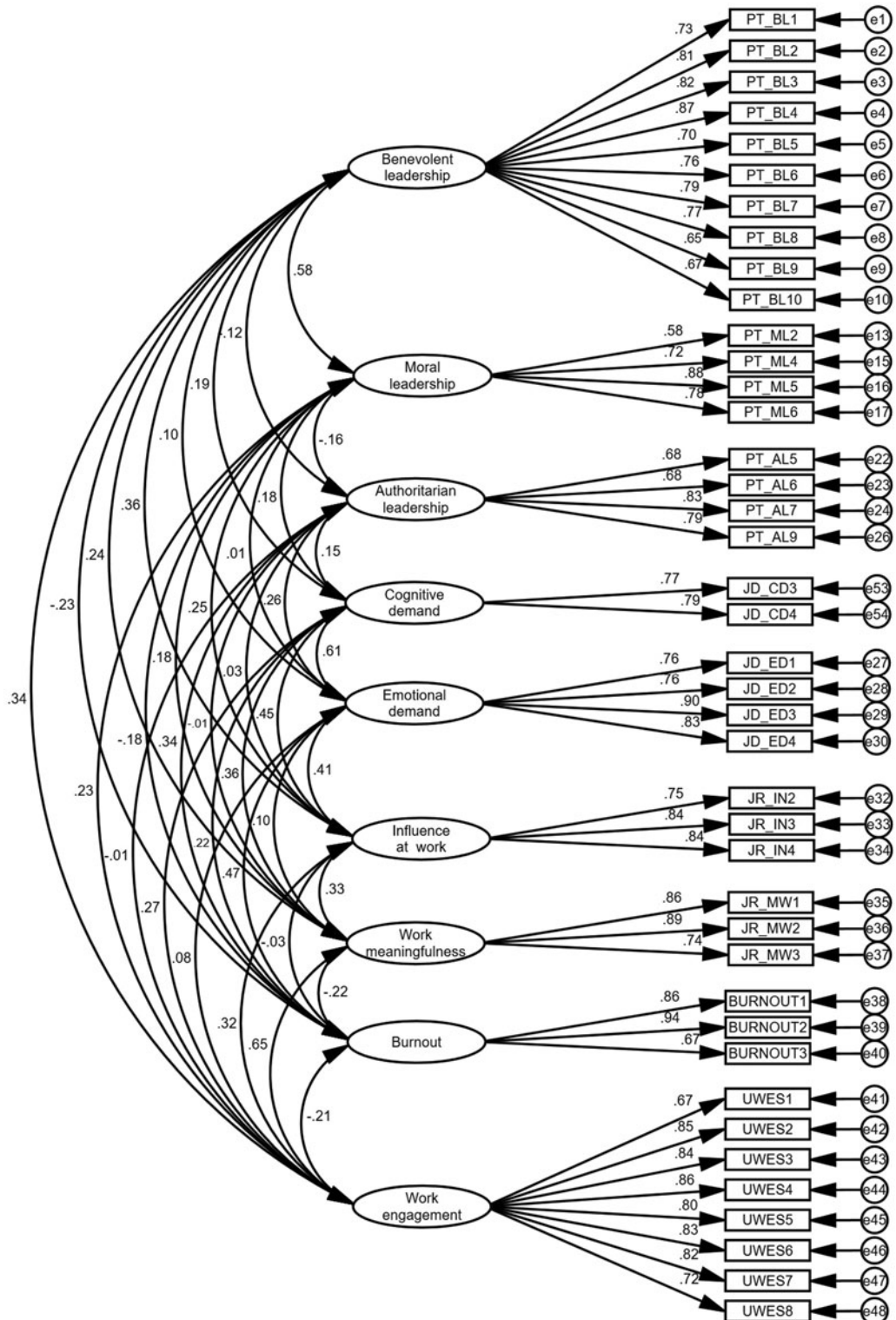


Figure. 2. Final measurement model.

produces unstandardized indirect effect estimates, lower and upper bounds of the estimates (employing bias-corrected bootstrapping using 2,000 samples at 95% CI) and *p* values. The mediation effect is considered significant if zero ('0') was not present between the lower and upper bounds of the estimates.

Hypothesis 5 stated that job resources mediate the relationship between paternalistic leadership and work engagement. The results showed that influence at work was not a significant mediator of the relationship between benevolent leadership and work engagement ($Beta [B] = .022$, BCa 95% CI $[-.012 \text{ to } .069]$, $p = .182$); moral leadership and work engagement ($B = .006$, BCa 95% CI $[-.004 \text{ to } .050]$, $p = .221$); and authoritarian leadership and work engagement ($B = .004$, BCa 95% CI $[-.002 \text{ to } .026]$, $p = .183$). The results also showed that work meaningfulness was a significant mediator of the relationship between benevolent leadership and work engagement ($B = .145$, BCa 95% CI $[.044-.254]$, $p = .001$). However, work meaningfulness was not a significant mediator of the relationship between moral leadership and work engagement ($B = .068$, BCa 95% CI $[-.092 \text{ to } .236]$, $p = .389$), nor of the relationship between authoritarian leadership and work engagement ($B = .016$, BCa 95% CI $[-.049 \text{ to } .083]$, $p = .621$). Hypothesis 5 was partially supported.

Hypothesis 6 stated that job demands mediate the relationship between paternalistic leadership and work engagement. Cognitive demands were not a significant mediator of the relationship between benevolent leadership and burnout ($B = .006$, BCa 95% CI $[-.013 \text{ to } .050]$, $p = .399$), moral leadership and burnout ($B = .009$, BCa 95% CI $[-.019 \text{ to } .069]$, $p = .366$) and authoritarian leadership and burnout ($B = .008$, BCa 95% CI $[-.019 \text{ to } .048]$, $p = .443$). Emotional demands were a significant mediator of the relationships between benevolent leadership and burnout ($B = .073$, BCa 95% CI $[.013-.150]$, $p = .018$) and between authoritarian leadership and burnout ($B = .117$, BCa 95% CI $[.060-.195]$, $p = .001$). Emotional demands were not a significant mediator of the relationship between moral leadership and burnout ($B = -.020$, BCa 95% CI $[-.110 \text{ to } .071]$, $p = .653$). Hypothesis 6 was partially supported. [Figure 3](#) below represents the final model.

Discussion

This study is the first to investigate the Taiwan-derived paternalistic leadership and to identify its relevance within the Malaysian context. The study's findings establish the stance on the effectiveness of the sub-components of paternalistic leadership as a type of Asian leadership comprising multiple aspects. The findings also support the applicability of paternalistic leadership in the Malaysian context, a country which supports similar cultural values to those in Taiwan, such as a relationship-oriented culture with adherence to authority (Hofstede, 2011). Previous research linking leadership to the JD-R theory has focused mainly on Western styles of leadership, such as transformational and empowering leadership, that are usually linear in their leadership aspects (Katou, Koupkas, & Triantafillidou, 2021; Lee, Idris, & Tuckey, 2019). In addition, no studies have yet investigated the three aspects of paternalistic leadership within the JD-R theory.

Our study's contribution lies in investigating the contrasting push factors (i.e., the authoritarian aspect) and pull factors (i.e., benevolent and moral aspects) of paternalistic leadership (Chan *et al.*, 2013), a well-known Asian leadership style. This style of leadership is related to employees' job resources and job demands, mainly through the motivational and health erosion pathways. The push factor of authoritarian leadership has positive associations with both cognitive and emotional demands, and higher levels of burnout. The pull factor of benevolent leadership has positive associations with both influence at work and work meaningfulness, and higher work engagement. Moral leadership did not show any relationships within the JD-R theory.

Specifically, our study investigated: (1) how the benevolent and moral aspects of paternalistic leadership are positively related to influence at work and work meaningfulness as job resources, and to higher work engagement, activating the motivational pathway; and (2) how the authoritarian aspect of paternalistic leadership is positively related to cognitive and emotional demands

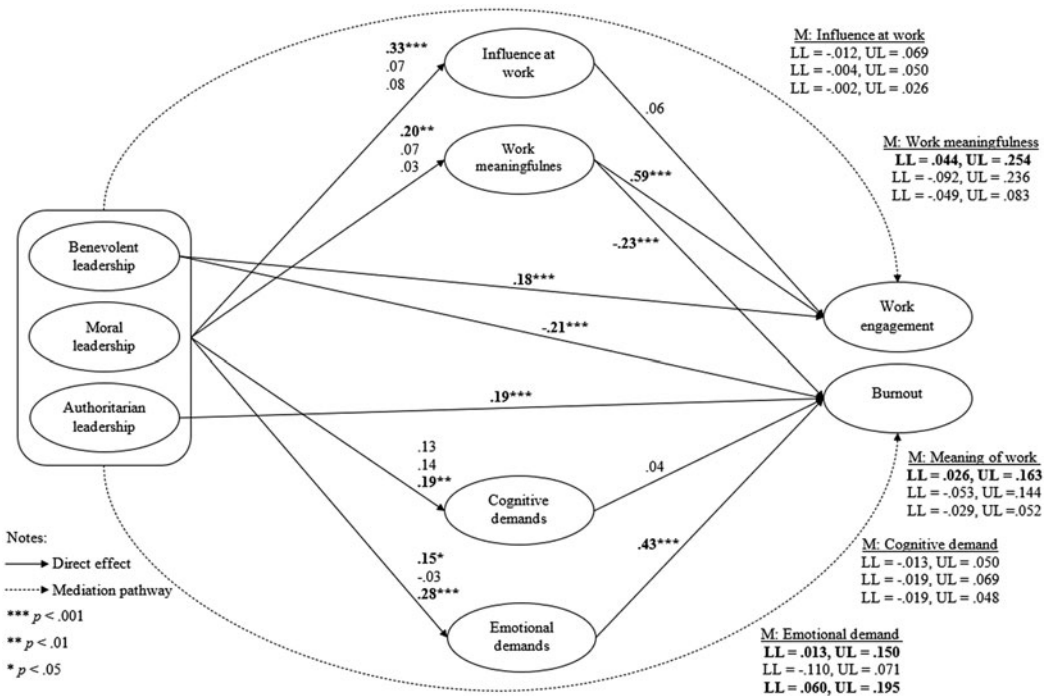


Figure 3. Final model.

as job demands in leading to a higher level of burnout, activating the health erosion pathway. Overall, the study found that benevolent leadership (but not authoritarian and moral leadership) was related to higher work engagement and lower burnout in employees through work meaningfulness (but not influence at work). In addition, the study found that emotional demands (but not cognitive demands) mediated the relationship between authoritarian leadership (but not benevolent and moral leadership) and burnout.

Our results provide support for how aspects of paternalistic leadership relate to both motivational and health erosion pathways within the JD-R theory. Benevolent leaders were found to be related to work engagement through work meaningfulness (but not influence at work), partially supported the hypothesis. This finding supports previous studies conducted in the Malaysian context where employees who perceived their work to be meaningful, such as having a positive perception of the person–job fit or having adequate supervisory and/or co-worker support, tended to be more enthusiastic and more engaged in their daily tasks (Ahmed, Majid, & Zin, 2016; Chung & Angeline, 2010). Specifically, the perception of work meaningfulness was positively associated with benevolent leadership (Karakas & Sarigollu, 2013). As in the findings of previous studies, work meaningfulness may create a higher intrinsic motivation (improving work engagement in general) when leaders provide employees with a purpose or the feeling of being appreciated by the organization (Morrison, Burke, & Greene, 2007; Steger, Dik, & Duffy, 2012). This is consistent with a study conducted in China by Chan and Mak (2012) which found that employees were able to find their work meaningful due to high-quality relationship with benevolent leaders.

The findings suggest that benevolent leadership relates to a conducive environment that resonates well with employees finding their own purpose, and the significance or importance of the work itself. When employees obtain a sense of meaning in their work, they take ownership and assume responsibility for the work they have done, with these values persisting to relate to a

higher level of work engagement (Mayhew, Ashkanasy, Bramble, & Gardner, 2007), while also developing the feelings of being appreciated by the organization (Morrison, Burke, & Greene, 2007; Steger, Dik, & Duffy, 2012).

On the other hand, the link between influence at work and work engagement was unclear in the current study, contradicting studies in the past (Sonnentag, Eck, Fritz, & Kühnel, 2020; Vassos, Nankervis, Skerry, & Lante, 2019). The reason for the lack of clarity could be the Malaysian work culture that is high in power distance. The unwillingness of employees to make their own decision without consulting a senior or leader (to avoid silly mistakes) (Blunt, 1988; Yousef, 2001) may be contradictory to leaders seeking to provide autonomy to employees and may buffer the effects of their leadership style. Thus, providing job autonomy in the Asian workplace may not be as beneficial in providing work meaningfulness to employees.

Although past studies on moral leadership have pull factors which overlap with benevolent leadership (Khorakian, Baregheh, Eslami, Yazdani, Maharati, & Jahangir, 2021; Wang & Xu, 2019), these findings were not supported within the JD-R theory, with the current study failing to show its relationship to the JD-R theory. The types of job resources and job demands were found to be not related to the morality aspect, which rejected all hypotheses related to moral leadership. Hence, it would be difficult to establish a relationship between the moral aspect of paternalistic leadership and job resources and job demands. We argue that moral leadership may be more related to issues such as honesty or integrity within an organization (Gini, 1997).

On the other hand, the authoritarian aspect of paternalistic leadership was found to positively relate to burnout through emotional demands (but not cognitive demands), which partially supported the hypothesis. The results displayed the health erosion pathway formed between authoritarian leaders and burnout particularly through emotional demands. While previous studies suggested that Malaysian employees can work under the influence of authoritarian leaders (Erben & Guneser, 2008; Fikret-Pasa, Kabasakal, & Bodur, 2001), the current study found that this is not without a cost: it comes with a price, that is, emotional demands.

We argue that this may be due to the collectivistic culture which prioritizes harmony among members of the in-group and the forgoing of personal agendas or well-being (Hofstede, 2011). Individuals from a collectivistic culture are more inclined to conform to their in-group by suppressing their own ideas and thoughts: as a result, this demand on employees incurs a large amount of emotional costs (Laila & Hanif, 2017). Over time, a negative state of affairs is created, with burnout in employees predicted (Lim, 2016). In coping with this situation, employees' own behaviour reinforces these emotional demands. For example, employees tend to act in accordance with the religious philosophy of *redha* and *tawwakal* in which they accept a situation as being predetermined without showing any negative emotions (Idris, Dollard, & Winefield, 2010). In another study, employees were found to often manifest their anger in psychological stress-related conditions, such as anxiety or depression, rather than expressing it directly (Liu, Spector, & Shi, 2007). Studies have found that employees under authoritarian leadership suppressed (negative) emotions more (Chiang, Chen, Liu, Akutsu, & Wang, 2021; Yao, Chen, & Wei, 2022), a reflection of high emotional demands.

By integrating leadership within the JD-R theory, the current study has contributed to paternalistic leadership studies within the Malaysian context through its significant findings within this spectrum of leadership behaviours. As Malaysian culture values relationships or comradeship more than anything else (Blunt, 1988; Noordin & Jusoff, 2010), a benevolent leadership style is conducive as these leadership qualities demonstrate love and care. On the flipside, authoritarian leadership commands obedience and respect towards authority: within a culture that is high in power distance (Yousef, 2001), authoritarian leadership exudes communication barriers between employees and leaders. Overall, the study showed similar findings with past studies from other countries.

Strengths, limitations and future research directions

The current study is the first to investigate the contrasting aspects of paternalistic leadership. Each aspect has shown a very distinctive relationship within the JD-R theory, specifically, the positive aspects that benevolent leadership delivers, the negative aspects that authoritarian leadership delivers and the non-related relationship within the JD-R theory shown by moral leadership. As previous studies have only shown support for how paternalistic leadership may display both push and pull factors (Cheng, Huang, & Chou, 2002), the current findings highlight how paternalistic leadership relates to employees' job resources and job demands.

The few limitations from this study need to be addressed. Firstly, a cross-sectional design was used, with it widely acknowledged that cross-sectional design limits the ability of researchers to draw conclusions about the causality between variables (Lewig & Dollard, 2003). Even though various models of mediation analysis (guided by numerous hypotheses) have been created in this study, the causal connections between the variables cannot be assumed. One way to examine these relationships is to conduct a longitudinal research design. In fact, using a longitudinal approach allows researchers to get around the issues of common method variance (see Podsakoff, MacKenzie, Lee, and Podsakoff, 2003). Thus, it is recommended that future studies employ a longitudinal research design to understand the temporal process of leadership's influence in the provision of job resources and job demands.

Furthermore, the current study has not explored the interactions between the sub-components of paternalistic leadership. Generally, the effectiveness of authoritarian leaders, in comparison to that of benevolent leaders and moral leaders, can be seen as oppositional. However, the interactions between multiple leadership styles may warrant further interest and investigation as the researcher may reach an understanding of the underlying mechanisms of the multiple aspects of leadership styles. Thus, future studies may take into consideration the interactions between the sub-components of paternalistic leadership.

Practical implications

From the current study's findings, the following practical implication focuses on the contribution of leaders to employee development. The reason is that leadership development remains a massive area into which organizations would like to tap. Most organizations are particularly interested in what leadership behaviours should be adopted in the organization and how (Dinh et al., 2014).

Organizations may want to promote and focus more on benevolent leadership which is helpful in projecting upon employees a more positive attitude towards their own work (Chan, 2017). Talent practitioners may want to shape a culture of 'treating your followers the way you treat your family' and emphasizing the leader's kindness aspect. Generally, leaders may act as a counsellor for employees who can look up to or consult with their leaders on their personal well-being. This will lead to more positive work attitudes (i.e., increase in work engagement) and better well-being (i.e., decrease in burnout) for employees.

In addressing the positive relationships of authoritarian leadership, organizations may want to have one-to-one consultations or deliver inclusive leadership training on how leaders can exercise their leadership power or position in a more constructive manner within the organization or team. While we understand that enforcing strict rules and exercising one's authoritative status are ingrained within the Asian culture, it is important to highlight that leaders need to be aware of their behaviours that may be detrimental to employees' well-being.

These may ensure that employees' well-being is addressed. It may also avoid the downward spiral cost to organizations of higher employee turnover intention and the higher cost of retaining, retraining and hiring talented employees (Gupta & Shaheen, 2017). Hence, organizations may focus on the positive relationships of benevolent leadership within paternalistic leadership and less on authoritarian leadership.

Conclusion

The current study's findings particularly support the importance of the benevolent leadership aspect within paternalistic leadership, with this associated with higher influence at work and work engagement, as well as lower burnout, and the associated mediation pathways. Authoritarian leadership, however, is associated with higher emotional demands and burnout, and its associated mediation pathway. The findings suggest relationships between aspects of paternalistic leadership on both the motivational pathway and the health erosion pathway within the JD-R theory. The findings highlight the need to view paternalistic leadership from the three sub-leadership styles and suggest the role of paternalistic leadership aspects as antecedents to the JD-R theory pathways. Future studies could investigate the interactions of the three aspects of paternalistic leadership in influencing work outcomes. Future research could also investigate the moral leadership aspect within paternalistic leadership using a moral context (e.g., situations pertaining to honesty or integrity), with this not found to be significant in the JD-R theory. The use of a longitudinal approach and particularly, a three-wave method, would help to unravel the relationships involved.

Financial support. The author(s) received no financial support for the research, authorship and/or publication of this article.

Conflict of interest. The author(s) declared no potential conflicts of interest with respect to the research, authorship and/or publication of this article.

References

- Adil, A., & Kamal, A. (2020). Authentic leadership and psychological capital in job demands-resources model among Pakistani university teachers. *International Journal of Leadership in Education*, 23(6), 734–754. <https://doi.org/10.1080/13603124.2019.1580772>.
- Ahmed, U., Majid, A. H. A., & Zin, M. M. (2016). Moderation of meaningful work on the relationship of supervisor support and coworker support with work engagement. *The Journal of Business, Economics, and Environmental Studies*, 6(3), 15–20. <https://doi.org/10.13106/eajbm.2016.vol6.no3.15>.
- Aycan, Z., Schyns, B., Sun, J. M., Felfe, J., & Saher, N. (2013). Convergence and divergence of paternalistic leadership: A cross-cultural investigation of prototypes. *Journal of International Business Studies*, 44(9), 962–969. <https://doi.org/10.1057/jibs.2013.48>.
- Bakker, A. B., & Demerouti, E. (2008). Towards a model of job engagement. *Career Development International*, 13(3), 209–223. <https://doi.org/10.1108/13620430810870476>.
- Bakker, A. B., & Demerouti, E. (2017). Job demands–resources theory: Taking stock and looking forward. *Journal of Occupational Health Psychology*, 22(3), 273–285. <https://doi.org/10.1037/ocp0000056>.
- Blunt, P. (1988). Cultural consequences for organization change in a Southeast Asian state: Brunei. *Academy of Management Perspectives*, 2(3), 235–240. <https://doi.org/10.5465/AME.1988.4277262>.
- Bretland, R. J., & Thorsteinsson, E. B. (2015). Reducing workplace burnout: The relative benefits of cardiovascular and resistance exercise. *PeerJ*, 3, e891. <https://doi.org/https://doi.org/10.7717/peerj.891>.
- Byrne, B. M. (2016). *Structural equation modeling with AMOS: Concepts, applications, and programming* (3rd ed.). New York: Routledge. <https://doi.org/10.4135/978152640225>.
- Cenkci, A. T., & Özçelik, G. (2015). Leadership styles and subordinate work engagement: The moderating impact of leader gender. *Global Business & Management Research*, 7(4), 8–20.
- Çetin, C., Toyman, N. V., Çakırel, ÖA, & Çakırel, Y. (2017). Paternalistic leadership and psychological well-being: The mediating role of meaningful work. *FSM Scholarly Studies Journal of Humanities & Social Sciences*, 10, 81–113. <https://doi.org/10.16947/fsmia.372604>.
- Chalofsky, N., & Krishna, V. (2009). Meaningfulness, commitment, and engagement: The intersection of a deeper level of intrinsic motivation. *Advances in Developing Human Resources*, 11(2), 189–203. <https://doi.org/10.1177/1523422309333147>.
- Chan, S. C. (2017). Benevolent leadership, perceived supervisory support, and subordinates' performance: The moderating role of psychological empowerment. *Leadership & Organization Development Journal*, 38(7), 897–911. <https://doi.org/10.1108/LODJ-09-2015-0196>.
- Chan, S. C., Huang, X., Snape, E., & Lam, C. K. (2013). The Janus face of paternalistic leaders: Authoritarianism, benevolence, subordinates' organization-based self-esteem, and performance. *Journal of Organizational Behavior*, 34(1), 108–128. <https://doi.org/10.1002/job.1797>.
- Chan, S. C., & Mak, W. M. (2012). Benevolent leadership and follower performance: The mediating role of leader–member exchange (LMX). *Asia Pacific Journal of Management*, 29(2), 285–301. <https://doi.org/10.1007/s10490-011-9275-3>.

- Chen, X. P., Eberly, M. B., Chiang, T. J., Farh, J. L., & Cheng, B. S. (2014). Affective trust in Chinese leaders: Linking paternalistic leadership to employee performance. *Journal of Management*, 40(3), 796–819. <https://doi.org/10.1177/0149206311410604>.
- Cheng, B. S., Chou, L. F., Wu, T. Y., Huang, M. P., & Farh, J. L. (2004). Paternalistic leadership and subordinate responses: Establishing a leadership model in Chinese organizations. *Asian Journal of Social Psychology*, 7(1), 89–117. <https://doi.org/10.1111/j.1467-839X.2004.00137.x>.
- Cheng, B. S., Huang, M. P., & Chou, L. F. (2002). Paternalistic leadership and its effectiveness: Evidence from Chinese organizational teams. *Journal of Psychology in Chinese Societies*, 3(1), 85–112.
- Chiang, J. T. J., Chen, X. P., Liu, H., Akutsu, S., & Wang, Z. (2021). We have emotions but can't show them! authoritarian leadership, emotion suppression climate, and team performance. *Human Relations*, 74(7), 1082–1111. <https://doi.org/10.1177/0018726720908649>.
- Chung, N. G., & Angeline, T. (2010). Does work engagement mediate the relationship between job resources and job performance of employees? *African Journal of Business Management*, 4(9), 1837–1843. <https://doi.org/10.5897/AJBM.9000225>.
- Clack, L. (2020). Employee engagement: Keys to organizational success. In S. Dhiman (Ed.), *The Palgrave handbook of workplace well-being* (pp. 1–28). Cham: Palgrave Macmillan. https://doi.org/10.1007/978-3-030-02470-3_77-1.
- de Jonge, J., & Dormann, C. (2006). Stressors, resources, and strains at work: A longitudinal test of the triple-match hypothesis. *Journal of Applied Psychology*, 91(6), 1359–1374. <https://doi.org/10.1037/0021-9010.91.5.1359>.
- Demerouti, E., Bakker, A. B., Nachreiner, F., & Schaufeli, W. B. (2001). The job demands–resources model of burnout. *Journal of Applied Psychology*, 86(3), 499–512. <https://doi.org/10.1037/0021-9010.86.3.499>.
- Dhar, R. L. (2016). Ethical leadership and its impact on service innovative behavior: The role of LMX and job autonomy. *Tourism Management*, 57, 139–148. <https://doi.org/10.1016/j.tourman.2016.05.011>.
- Diefendorff, J. M., Greguras, G. J., & Fleenor, J. (2016). Perceived emotional demands–abilities fit. *Applied Psychology*, 65(1), 2–37. <https://doi.org/10.1111/apps.12034>.
- Dinh, J. E., Lord, R. G., Gardner, W. L., Meuser, J. D., Liden, R. C., & Hu, J. (2014). Leadership theory and research in the new millennium: Current theoretical trends and changing perspectives. *The Leadership Quarterly*, 25(1), 36–62. <https://doi.org/10.1016/j.leaqua.2013.11.005>.
- Erben, G. S., & Guneser, A. B. (2008). The relationship between paternalistic leadership and organizational commitment: Investigating the role of climate regarding ethics. *Journal of Business Ethics*, 82(4), 955–968. <https://doi.org/10.1007/s10551-007-9605-z>.
- Farh, J. L., & Cheng, B. S. (2000). A cultural analysis of paternalistic leadership in Chinese organizations. In J. T. Li, A. S. Tsui & E. Weldon (Eds.), *Management and organizations in the Chinese context* (pp. 84–127). London: Macmillan. https://doi.org/10.1057/9780230511590_5.
- Fikret-Pasa, S., Kabasakal, H., & Bodur, M. (2001). Society, organisations, and leadership in Turkey. *Applied Psychology*, 50(4), 559–589. <https://doi.org/10.1111/1464-0597.00073>.
- Gallagher, D., Ting, L., & Palmer, A. (2008). A journey into the unknown: Taking the fear out of structural equation modeling with AMOS for the first-time user. *The Marketing Review*, 8(3), 255–275. <https://doi.org/10.1362/146934708X337672>.
- Gaskin, J., & Lim, J. (2018). *Indirect effects, AMOS Plugin*. Gaskination's StatWiki. <http://statwiki.kolobkreations.com>.
- Ghislieri, C., Molino, M., & Cortese, C. G. (2018). Work and organizational psychology looks at the Fourth Industrial Revolution: How to support workers and organizations? *Frontiers in Psychology*, 9, 1–6. <https://doi.org/10.3389/fpsyg.2018.02365>.
- Gini, A. (1997). Moral leadership and business ethics. *Journal of Leadership Studies*, 4(4), 64–81. <https://doi.org/10.1177/2F107179199700400406>.
- Gu, J., Wang, G., Liu, H., Song, D., & He, C. (2018). Linking authoritarian leadership to employee creativity. *Chinese Management Studies*, 12(2), 384–406. <https://doi.org/10.1108/cms-10-2017-0294>.
- Gupta, M., & Shaheen, M. (2017). Impact of work engagement on turnover intention: Moderation by psychological capital in India. *Business: Theory and Practice*, 18, 136–143. <https://doi.org/10.3846/btp.2017.014>.
- Hair, Jr. J. F., Sarstedt, M., Hopkins, L., & Kuppelwieser, V. G. (2014). Partial least squares structural equation modeling (PLS-SEM): An emerging tool in business research. *European Business Review*, 26(2), 106–121. <https://doi.org/10.1108/EBR-10-2013-0128>.
- Heuven, E., Bakker, A. B., Schaufeli, W. B., & Huisman, N. (2006). The role of self-efficacy in performing emotion work. *Journal of Vocational Behavior*, 69(2), 222–235. <https://doi.org/10.1016/j.jvb.2006.03.002>.
- Hiller, N., Sin, H., Ponnappalli, A., & Ozgen, S. (2019). Benevolence and authority as WEIRDly unfamiliar: A multi-language meta-analysis of paternalistic leadership behaviors from 152 studies. *The Leadership Quarterly*, 30(1), 165–184. <https://doi.org/10.1016/j.leaqua.2018.11.003>.
- Hofstede, G. (2011). Dimensionalizing cultures: The Hofstede model in context. *Online Readings in Psychology and Culture*, 2(1), 3–26. <https://doi.org/10.9707/2307-0919.1014>.
- Huyghebaert, T., Gillet, N., Lahiani, F. J., & Fouquereau, E. (2016). Curvilinear effects of job characteristics on ill-being in the nursing profession: A cross-sectional study. *Journal of Advanced Nursing*, 72(5), 1109–1121. <https://doi.org/10.1111/jan.12894>.

- Idris, M. A., Dollard, M. F., & Winefield, A. H. (2010). Lay theory explanations of occupational stress: The Malaysian context. *Cross Cultural Management: An International Journal*, 17(2), 135–153. <https://doi.org/10.1108/13527601011038714>.
- Kaltiainen, J., & Hakanen, J. (2022). Fostering task and adaptive performance through employee well-being: The role of servant leadership. *BRQ Business Research Quarterly*, 25(1), 28–43. <https://doi.org/10.1177/2340944420981599>.
- Karakas, F., & Sarigollu, E. (2013). The role of leadership in creating virtuous and compassionate organizations: Narratives of benevolent leadership in an Anatolian tiger. *Journal of Business Ethics*, 113(4), 663–678. <https://doi.org/10.1007/s10551-013-1691-5>.
- Karasek, R. (1979). Job demands, job decision latitude, and mental strain: Implications for job redesign. *Administrative Science Quarterly*, 24(2), 285–308. <https://doi.org/10.2307/2392498>.
- Katou, A. A., Koupkas, M., & Triantafillidou, E. (2021). Job demands-resources model, transformational leadership and organizational performance: A multilevel study. *International Journal of Productivity and Performance Management*, 71(7), 2704–2722. <https://doi.org/10.1108/IJPPM-06-2020-0342>.
- Kelloway, E. K., Turner, N., Barling, J., & Loughlin, C. (2012). Transformational leadership and employee psychological well-being: The mediating role of employee trust in leadership. *Work & Stress*, 26(1), 39–55. <https://doi.org/10.1080/02678373.2012.660774>.
- Khorakian, A., Baregheh, A., Eslami, G., Yazdani, N., Maharati, Y., & Jahangir, M. (2021). Creativity and paternalistic leadership in a developing country's restaurants: The role of job embeddedness and career stage. *International Journal of Tourism Research*, 23(4), 677–689. <https://doi.org/10.1002/jtr.2434>.
- Kline, R. B. (2015). *Principles and practice of structural equation modeling* (4th ed.). New York: The Guilford Press.
- Laila, U., & Hanif, R. (2017). The impact of task level demands, work group level support and affective commitment on emotional exhaustion among services managers. *Humanomics*, 33(3), 441–452. <https://doi.org/10.1108/H-12-2015-0081>.
- Leclerc, L., Kennedy, K., & Campis, S. (2021). Human-centred leadership in health care: A contemporary nursing leadership theory generated via constructivist grounded theory. *Journal of Nursing Management*, 29(2), 294–306. <https://doi.org/10.1111/jonm.13154>.
- Lee, M. C. C., & Ding, A. Y. (2020). Comparing empowering, transformational, and transactional leadership on supervisory coaching and job performance: A multilevel perspective. *PsyCh Journal*, 9(5), 668–681. <https://doi.org/10.1002/pchj.345>.
- Lee, M. C. C., Idris, M. A., & Delfabbro, P. H. (2017). The linkages between hierarchical culture and empowering leadership and their effects on employees' work engagement: Work meaningfulness as a mediator. *International Journal of Stress Management*, 24(4), 392–415. <https://doi.org/10.1037/str0000043>.
- Lee, M. C. C., Idris, M. A., & Tuckey, M. (2019). Supervisory coaching and performance feedback as mediators of the relationships between leadership styles, work engagement, and turnover intention. *Human Resource Development International*, 22(3), 257–282. <https://doi.org/10.1080/13678868.2018.1530170>.
- Lewig, K. A., & Dollard, M. F. (2003). Emotional dissonance, emotional exhaustion and job satisfaction in call centre workers. *European Journal of Work and Organizational Psychology*, 12(4), 366–392. <https://doi.org/10.1080/13594320344000200>.
- Lim, N. (2016). Cultural differences in emotion: Differences in emotional arousal level between the East and the West. *Integrative Medicine Research*, 5(2), 105–109. <https://doi.org/10.1016/j.imr.2016.03.004>.
- Liu, C., Spector, P. E., & Shi, L. (2007). Cross-national job stress: A quantitative and qualitative study. *Journal of Organizational Behavior: The International Journal of Industrial, Occupational and Organizational Psychology and Behavior*, 28(2), 209–239. <https://doi.org/10.1002/job.435>.
- May, D., Gilson, R., & Harter, L. (2004). The psychological conditions of meaningfulness, safety and availability and the engagement of the human spirit at work. *Journal of Occupational and Organizational Psychology*, 77(1), 11–37. <https://doi.org/10.1348/096317904322915892>.
- Mayhew, M. G., Ashkanasy, N. M., Bramble, T., & Gardner, J. (2007). A study of the antecedents and consequences of psychological ownership in organizational settings. *The Journal of Social Psychology*, 147(5), 477–500. <https://doi.org/10.3200/SOCP.147.5.477-500>.
- Morrison, E. E., Burke, III G. C., & Greene, L. (2007). Meaning in motivation: Does your organization need an inner life? *Journal of Health and Human Services Administration*, 30(1), 98–115.
- Muhamad Nasharudin, N. A., Idris, M. A., & Young, L. M. (2020). The effect of job demands on health and work outcomes: A longitudinal study among Malaysian employees. *PsyCh Journal*, 9(5), 1–16. <https://doi.org/10.1002/pchj.378>.
- Noordin, F., & Jusoff, K. (2010). Individualism–collectivism and job satisfaction between Malaysia and Australia. *International Journal of Educational Management*, 24(2), 159–174. <https://doi.org/10.1108/09513541011020963>.
- Öge, E., Çetin, M., & Top, S. (2018). The effects of paternalistic leadership on workplace loneliness, work family conflict and work engagement among air traffic controllers in Turkey. *Journal of Air Transport Management*, 66, 25–35. <https://doi.org/10.1016/j.jairtraman.2017.10.003>.
- Pejtersen, J. H., Kristensen, T. S., Borg, V., & Bjorner, J. B. (2010). The second version of the Copenhagen Psychosocial Questionnaire. *Scandinavian Journal of Public Health*, 38(3), 8–24. <https://doi.org/10.1177/1403494809349858>.
- Pellegrini, E. K., & Scandura, T. A. (2008). Paternalistic leadership: A review and agenda for future research. *Journal of Management*, 34(3), 566–593. <https://doi.org/10.1177/0149206308316063>.

- Podsakoff, P. M., MacKenzie, S. B., Lee, J. Y., & Podsakoff, N. P. (2003). Common method biases in behavioral research: A critical review of the literature and recommended remedies. *Journal of Applied Psychology*, 88(5), 879–903. <https://doi.org/10.1037/0021-9010.88.5.879>.
- Ramachandran, A., Snehaltha, C., Shetty, A. S., & Nanditha, A. (2012). Trends in prevalence of diabetes in Asian countries. *World Journal of Diabetes*, 3(6), 110–117. <https://doi.org/10.4239/wjd.v3.i6.110>.
- Rockstuhl, T., Dulebohn, J. H., Ang, S., & Shore, L. M. (2012). Leader–member exchange (LMX) and culture: A meta-analysis of correlates of LMX across 23 countries. *Journal of Applied Psychology*, 97(6), 1097–1130. <https://doi.org/10.1037/a0029978>.
- Roslan, N. A., Ho, J. A., Ng, S. I., & Sambasivan, M. (2015). Job demands & job resources: Predicting burnout and work engagement among teachers. *International Proceedings of Economics Development and Research*, 84, 138–145. Retrieved from <http://www.ipedr.com/vol84/017-E00026.pdf>.
- Ryan, R. M., & Deci, E. L. (2000). Self-determination theory and the facilitation of intrinsic motivation, social development, and well-being. *American Psychologist*, 55(1), 68–78. <https://doi.org/10.1037/10003-066X.55.1.68>.
- Schaufeli, W. B., & Bakker, A. B. (2004). Job demands, job resources, and their relationship with burnout and engagement: A multi-sample study. *Journal of Organizational Behavior*, 25(3), 293–315. <https://doi.org/10.1002/job.248>.
- Schaufeli, W. B., Bakker, A. B., & Salanova, M. (2006). The measurement of work engagement with a short questionnaire: A cross-national study. *Educational and Psychological Measurement*, 66(4), 701–716. <https://doi.org/10.1177/0013164405282471>.
- Schaufeli, W. B., Taris, T. W., & Van Rhenen, W. (2008). Workaholism, burnout, and work engagement: Three of a kind or three different kinds of employee well-being? *Applied Psychology*, 57(2), 173–203. <https://doi.org/10.1111/j.1464-0597.2007.00285.x>.
- Schermerhorn, J. R., & Bond, M. H. (1997). Cross-cultural leadership dynamics in collectivism and high power distance settings. *Leadership & Organization Development Journal*, 18(4), 187–193. <https://doi.org/10.1108/01437739710182287>.
- Schreiber, J. B., Nora, A., Stage, F. K., Barlow, E. A., & King, J. (2006). Reporting structural equation modeling and confirmatory factor analysis results: A review. *The Journal of Educational Research*, 99(6), 323–338.
- Shu, C. Y. (2015). The impact of intrinsic motivation on the effectiveness of leadership style towards on work engagement. *Contemporary Management Research*, 11(4), 327–350. <https://doi.org/10.7903/cmr.14043>.
- Shulman, H. G., & Olex, M. (1985). Designing the user-friendly robot: A case history. *Human Factors*, 27(1), 91–98. <https://doi.org/10.1177%2F001872088502700108>.
- Siddique, C. M., & Siddique, H. F. (2019). Antecedents and consequences of managerial decision-making styles in the Arabian Gulf. *Management Research Review*, 43(7), 811–845. <https://doi.org/10.1108/MRR-02-2018-0047>.
- Sim, B. Y. H., Lee, M. C. C., Kwan, S. S. M., & Tuckey, M. R. (2021). The relationship between toxic leadership, job insecurity, workplace bullying and turnover intention in the Malaysian context: A multilevel mediational perspective. In P. D'Cruz, E. Noronha & A. Mendonca (Eds.), *Asian perspectives on workplace bullying and harassment* (pp. 181–210). Singapore: Springer. https://doi.org/10.1007/978-981-16-2362-2_7.
- Sonnentag, S., Eck, K., Fritz, C., & Kühnel, J. (2020). Morning reattachment to work and work engagement during the day: A look at day-level mediators. *Journal of Management*, 46(8), 1408–1435. <https://doi.org/10.1177/0149206319829823>.
- Steger, M. F., Dik, B. J., & Duffy, R. D. (2012). Measuring meaningful work: The Work and Meaning Inventory (WAMI). *Journal of Career Assessment*, 20(3), 322–337. <https://doi.org/10.1177/1069072711436160>.
- Tuckey, M. R., Bakker, A. B., & Dollard, M. F. (2012). Empowering leaders optimize working conditions for engagement: A multilevel study. *Journal of Occupational Health Psychology*, 17(1), 15–27. <https://doi.org/10.1037/a0025942>.
- Vassos, M., Nankervis, K., Skerry, T., & Lante, K. (2019). Can the job demand-control-(support) model predict disability support worker burnout and work engagement? *Journal of Intellectual & Developmental Disability*, 44(2), 139–149. <https://doi.org/10.3109/13668250.2017.1310818>.
- Vecchio, R. P. (2000). Negative emotion in the workplace: Employee jealousy and envy. *International Journal of Stress Management*, 7(3), 161–179. <https://doi.org/10.1023/A:1009592430712>.
- Wang, A. C., & Cheng, B. S. (2010). When does benevolent leadership lead to creativity? The moderating role of creative role identity and job autonomy. *Journal of Organizational Behavior*, 31(1), 106–121. <https://doi.org/10.1002/job.634>.
- Wang, Z., & Xu, H. (2019). When and for whom ethical leadership is more effective in eliciting work meaningfulness and positive attitudes: The moderating roles of core self-evaluation and perceived organizational support. *Journal of Business Ethics*, 156(4), 919–940. <https://doi.org/10.1007/s10551-017-3563-x>.
- Yao, L., Chen, X. P., & Wei, H. (2022). How do authoritarian and benevolent leadership affect employee work–family conflict? An emotional regulation perspective. *Asia Pacific Journal of Management*, 1–29. <https://doi.org/10.1007/s10490-022-09824-x>.
- Yousef, D. A. (2001). Islamic work ethic: A moderator between organizational commitment and job satisfaction in a cross-cultural context. *Personnel Review*, 30(2), 152–169. <https://doi.org/10.1108/00483480110380325>.