

# THE EARLY BRONZE AGE CEMETERY AT ÇEŞME–BOYALIK IN COASTAL WESTERN ANATOLIA

by Vasıf Şahoğlu 

Ankara University

Dedicated to the loving memory of my parents, Eral Şahoğlu and H. Özer Şahoğlu

*Early Bronze Age burial practices in western Anatolia have been much discussed, and the general developmental stages of these traditions have been defined by scholars over the course of years. The first half of the third millennium sees the use of a variety of grave types, namely, stone cist, pithos and simple pit burials; meanwhile, during the second half of the millennium, pithos burials seem to predominate. Short-term rescue excavations at Boyalık, in Çeşme District, İzmir Province, reveal the presence of a new type of burial tradition in coastal western Anatolia dating to the middle of the third millennium BC. The cemetery revealed the use of rock-cut chamber tombs for the first time in this region. This paper presents the unique graves and their finds from Boyalık cemetery and discusses the implications of this new tradition for the third-millennium archaeology of the wider Aegeo-Anatolian region.*

## INTRODUCTION

The Early Bronze Age mortuary traditions in the Aegean and Anatolia consisted mainly of extramural burials for adults (Stech-Wheeler 1974; Massa and Şahoğlu 2011). Our knowledge of burial habits in central Anatolia is quite limited and is mostly based on small-scale excavations in extramural cemeteries mainly dating to the second half of the third millennium BC (Fig. 1). Pithos, stone cist and simple pit burials constitute the main burial types in Central Anatolia (Özgüç 1948). Rich graves uncovered at sites like Alacahöyük (Koşay 1951), Horoztepe (Özgüç and Akok 1958), Resuloğlu (Yıldırım 2006; Yıldırım and Ediz 2005; 2006; 2007; 2008; Yıldırım and Zimmermann 2006), Kalinkaya (Zimmermann 2006; 2007), Merzifon–Oymağaç (Özgüç 1978), and Kültepe–İnler Dağı (Öztürk and Kulakoğlu 2019), as well as the ‘treasures’ from Mahmatlar (Koşay and Akok 1950) and Eskiypar (Özgüç and Temizer 1993) clearly demonstrate the high level of wealth achieved, which was also displayed and consumed through burial practices by the cultures of this region during the Early Bronze Age. These rich cemeteries in central Anatolia provide important information on both the burial habits in the region as well as the development of metallurgy. Finds from central Anatolian cemeteries form the basis of our increasing knowledge of the development and spread of tin-bronze in Anatolia and beyond.

Western Anatolia is an important region in understanding the interregional dynamics and connections within a wide geographical region extending from the central Anatolian plateau to the Aegean Sea. As a result of excavations carried out at sites like Troia (Korfmann 2001), Küllüoba (Efe 2000; Efe and Ay-Efe 2001), Beycesultan (Lloyd and Mellaart 1962), Aphrodisias (Joukowsky 1986), Karataş-Semayük (Mellink 1970a; 1970b; 1994), Liman Tepe (Erkanal 1996; 1999; 2001; 2008a; Erkanal and Erkanal 2015; Erkanal and Şahoğlu 2012a; 2016), Bakla Tepe (Erkanal 2008b; Erkanal and Erkanal 2015; Erkanal and Özkan 1999; 2000; Erkanal and Şahoğlu 2012b; Gündoğan, Şahoğlu and Erkanal 2019; Gündoğan 2020; Keskin 2008; Şahoğlu 2008; 2016), Yenibademli Höyük (Hüryılmaz 2006a; 2006b) Ulucak (Çilingiroğlu et al. 2004), Çeşme–Bağlararası (Şahoğlu 2007; 2012; Şahoğlu et al. 2018), Yassı Tepe (Derin 2019),



Fig. 1. Map of sites mentioned in the text. Map: Ümit Gündoğan and Vasif Şahoğlu.

Çukuriçi Höyük (Horejs and Mehofer 2015; Horejs and Schwall 2018) and Çine-Tepecik (Günel 2014; 2023), our knowledge of Early Bronze Age settlement organisation and the socio-economic and political structure of the region has been much improved (Şahoğlu 2019) (Fig. 1).

While settlement excavations have furnished data on chronology, settlement structures and production activities, various cemeteries have provided information on socio-economic organisation and burial practices. Numerous cemeteries or individual graves have been excavated in western Anatolia, while many more have been found already destroyed through illicit digs. Although finds from such illegal activities have sometimes found their way to museums and do provide some information on burial habits, such data is in no way comparable to those obtained through well documented systematic excavations (Stech-Wheeler 1974; Massa and Şahoğlu 2011).

Our knowledge of burial practices in Early Bronze Age western Anatolia has increased through such systematically excavated and published cemeteries (Fig. 1). Among these, Iasos cemetery with its stone cist graves (Pacorella 1984) and Bakla Tepe cemetery with its pithos, stone cist and pit burials (Şahoğlu 2016) demonstrate heterogeneity in grave types in coastal western Anatolia during this period (Massa and Şahoğlu 2011). The recently excavated Çapalıbağ cemetery in Caria region (Oğuzhanoğlu and Pazarcı 2020)<sup>1</sup> and Kesikservi cemetery in Bodrum (Aykurt et al. 2023) date to the first half of the third millennium BC. Nevertheless, our knowledge of the burial practices of prehistoric Anatolia is largely based on research carried out on cemeteries dating to the late Early Bronze (EB) II / early EB III period. In this respect, the cemeteries of Demircihöyük-Sarıket (Seeher 2000; Massa 2014), Küçükhöyük (Gürkan and Seeher 1991) and

<sup>1</sup> A short review of Early Bronze Age cemeteries around south-western Anatolia can be found in Oğuzhanoglu 2022.

Kaklık Mevkii (Topbaş, Efe and İlyaslı 1998), located in inland north-west Anatolia, enable comparisons between western and central Anatolia. Harmanören-Gündürle (Özsait 2000) and Elmalı-Karataş cemeteries further south in inland south-western Anatolia (Mellink 1970a; 1970b; 1994) and the recently excavated Kumyer cemetery in coastal south-western Anatolia (Akarsu 2013) are some of the other systematically excavated pithos cemeteries dating to the third quarter of the third millennium BC. Bakla Tepe (Şahoğlu 2016) and Ulucak (Çilingiroğlu et al. 2004) in the Izmir region also have pithos burial cemeteries dating to the late EB II and EB III periods.

Within this context, the extramural cemetery at Çeşme–Boyalık presents a new burial tradition for western Anatolia, previously completely unknown, with important implications for understanding the region's wider socio-cultural connections.

### ÇEŞME-BOYALIK CEMETERY

Excavations at Boyalık were carried out by the Çeşme Archaeological Museum in 2000 at Izmir Province, Çeşme District, Sakarya Quarter, Map 24J-II, Block 5614, Parcel I and in 2005 in the adjoining Sakarya Quarter, Map 24J-II, Block 5614, Parcel 8. The excavations were undertaken as rescue work in an area which was listed as a third degree archaeological site. Four graves (Graves 1–4) were uncovered in 2000 and a further two (Graves 5–6) in 2005 (Şahoğlu, Vural and Karaturgut 2009).

A total of 15 test trenches varying in shape and size (Fig. 2) were opened across the investigated area in 2000 and 2005. The trenches were usually T-shaped with a size of  $7 \times 7 \times 1$  m but some of them were later extended depending on the finds unearthed at these spots. The depth of the trenches varied between 0.65 m and 1.80 m, again depending on the nature of the volcanic porous bedrock and the presence or absence of archaeological features. Very few of the trenches yielded visible archaeological deposits and, when necessary, test trenches were extended into larger excavation areas (Fig. 2b). Excavations at Boyalık cemetery revealed a total of six graves that seem to be concentrated mainly in the eastern part of the excavation area (Fig. 2a). The excavated trenches and the plots these trenches belonged to have since been built upon and are now under modern buildings. Thus, further archaeological investigation of this cemetery is impossible.

The graves excavated at this cemetery are in many ways unique for western Anatolia, although similar grave types are known from elsewhere in the Aegean. Five of the six excavated graves can be classified as rock-cut chamber tombs, whereas a pithos burial has also been unearthed in close association with one of them. Some of the graves have been recorded as 'pit graves' by the excavators, but it is most likely that these graves also represent rock-cut chamber tombs whose roofs have collapsed. The function of three other pits dug into bedrock can also be questioned according to their contents. A 'channel'-like feature cut into the bedrock across the excavated area constitutes another interesting element at Çeşme–Boyalık cemetery (Fig. 2).

The graves usually contained multiple burials, and it seems that older interments were pushed to the sides of the grave when a new body was going to be interred. Unfortunately, the skeletal remains are described as being in very bad state of preservation due to the characteristics of the soil matrix, which did not allow a proper study at the time of excavation.<sup>2</sup> Besides pottery, metal finds, obsidian and spindle whorls were also found as grave goods in the graves.

#### Çeşme–Boyalık Grave 1

Grave 1 was identified in the eastern part of test trench 2 (Fig. 2). This is a circular pit grave cut into the volcanic porous bedrock and has a diameter of c. 1.60 m (Figs 3–4). The grave contained

<sup>2</sup> The skeletal data from the cemetery could not be accessed at the time of writing this paper. We hope that the anthropological evaluation of this important data will be separately published with references to mark the completion of the publication of data belonging to this cemetery.

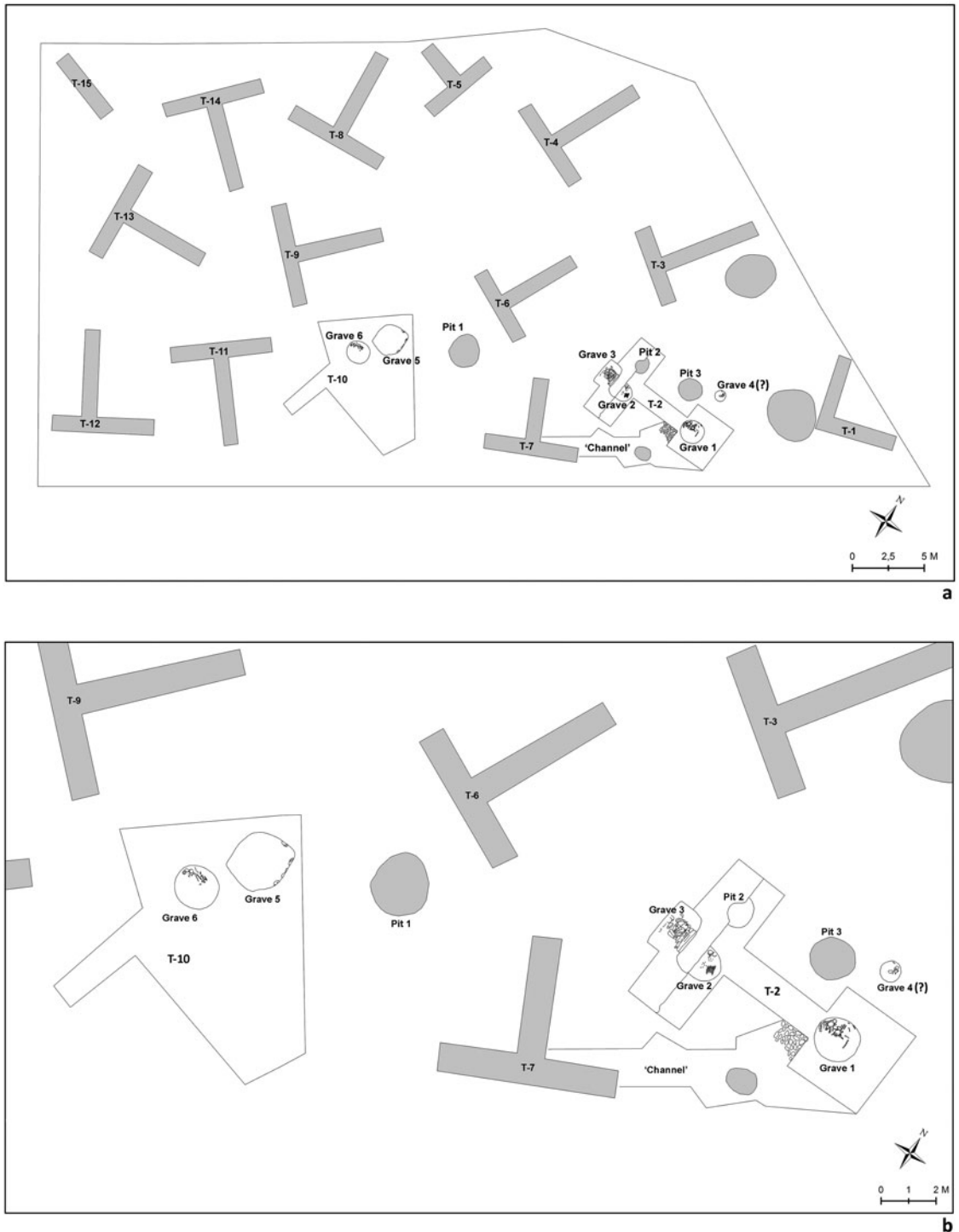


Fig. 2. Plan of Çeşme–Boyalık cemetery showing the excavated test trenches, found graves and other features.

remains of at least three individuals based on their skulls, but there might be more. The skeletal remains were disarticulated and located in the north-western side of the grave (Figs 3–4). The deposition of the skeletal remains indicates multiple use of the grave at different times. There is a ‘pillow slab’ next to one of the skulls – a characteristic attested in almost every grave at the



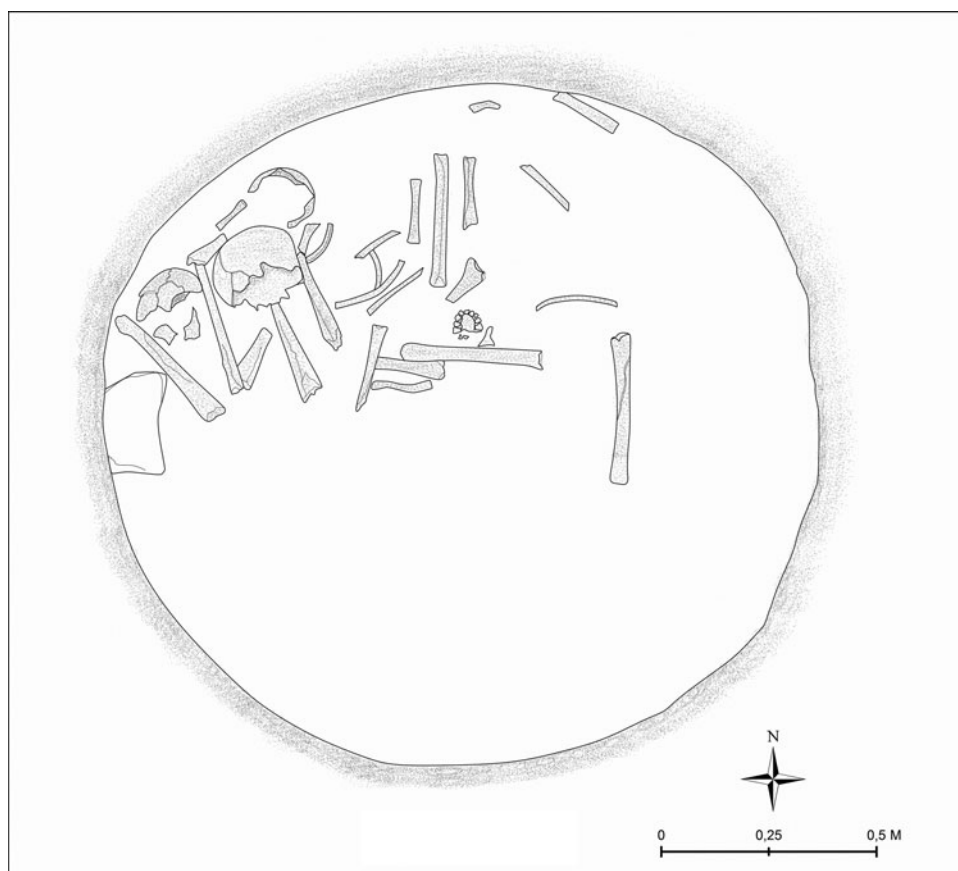


Fig. 3. Plan of Çeşme-Boyalık Grave 1. Drawing: Ramazan Güler.



Fig. 4. Photo of Çeşme-Boyalık Grave 1 showing the grave chamber and the burials inside.  
Photo: Hüseyin Vural.

cemetary. The upper layers of the grave pit included some fragments of pithoi and some ceramic sherds. The grave was excavated with the assumption that it was a pit grave during the excavations, but it is most probably a rock-cut chamber tomb with a collapsed roof based on the evidence we see in Grave 2 within this cemetery.

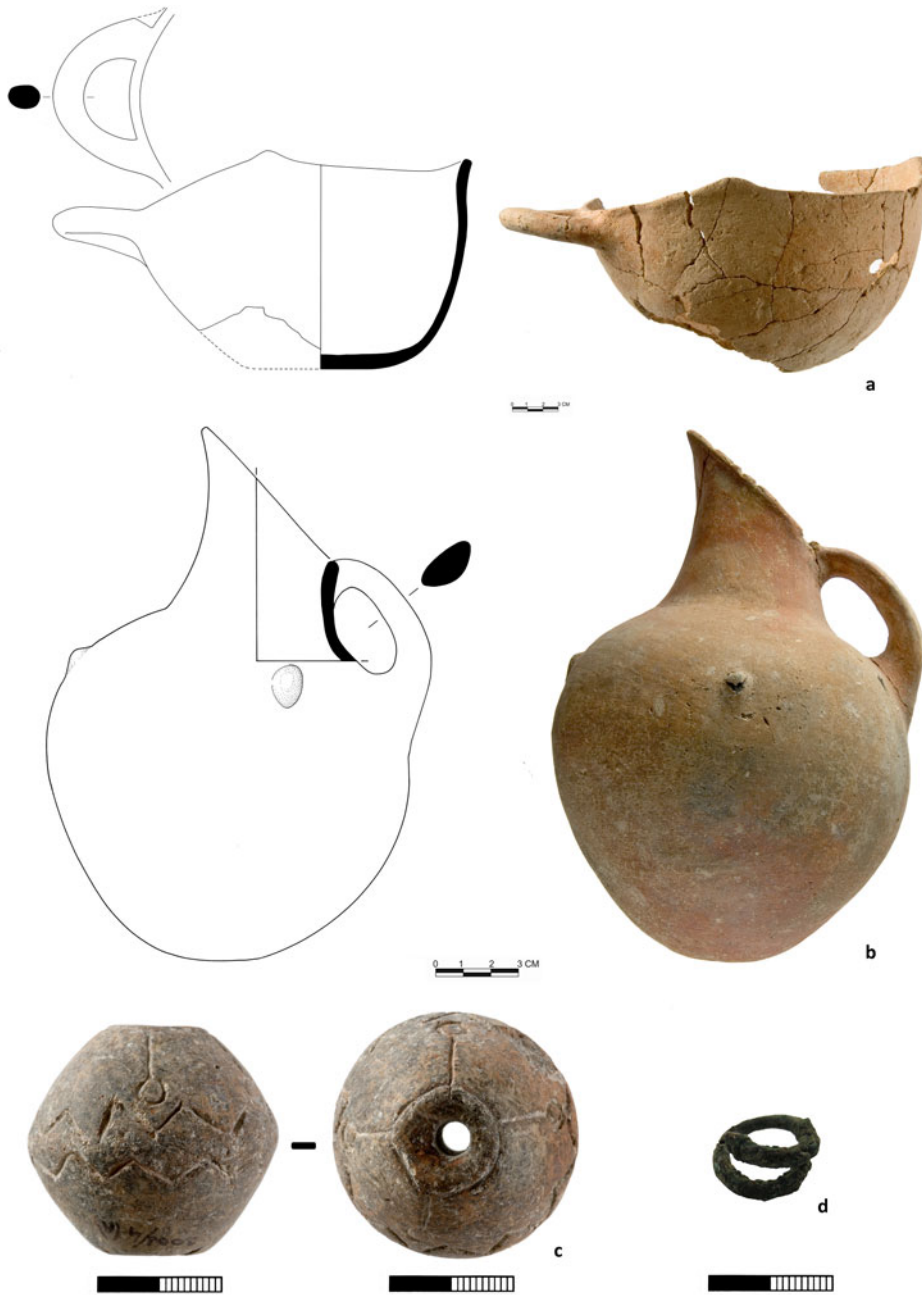


Fig. 5. Cat. nos (a) **BOY 00/01**; (b) **BOY 00/02**; (c) **BOY 00/03**; and (d) **BOY 00/04**. Finds from Çeşme-Boyalık Grave 1. Drawings: Douglas Faulmann, Photos: Chronis Papanikolopoulos.

The inventory of grave finds included a fragmentary pithos (preserved dimensions 0.50 × 0.40 m) and some other sherds found just underneath the surface soil. A beak-spouted jug (Fig. 5b) and an incised spindle whorl (Fig. 5c) were found in the central part of the grave at a higher elevation overlying a badly preserved horizontal handled bowl (Fig. 5a) which was found c. 0.75 cm to the east of these finds. A small spiral shaped copper-based ring (Fig. 5d) was also found during the dry sieving of the soil of the grave.

*Inventory of finds from Grave 1*

**BOY 00/01** (*horizontal handled bowl*). The badly preserved bowl has an asymmetrical rim and must have had three rounded, triangular projections on the plain rim (one missing) (Fig. 5a). The body is slightly rounded. The base is flat and the bowl has a single horizontal handle, which is oval in section, attached just below the rim. The bowl is low fired and is relatively light in weight. The fabric is quite porous due to burnt organic inclusions. It also contains mineral inclusions like semi-transparent crystalline grains and white particles with sharp edges. The vessel surface is reddish-brown slipped (2.5 YR 5/6) both inside and outside, which is mostly worn. The bowl has been restored and about one third of it is missing.

**BOY 00/02** (*beak-spouted jug*). The beak-spouted jug has a short and relatively wide neck and an almost pear-shaped body with a flat base (Fig. 5b). The D-section vertical strap handle is attached to the rim at the lower end of the spout and the shoulder. There are three circular knobs on the shoulder of the vessel, set at an equal distance from each other. The vessel is crudely shaped and not quite symmetrical. The vessel cannot stand on its base when empty. The shape of the vessel, the sharp edges on the handle and the presence of the knobs are all considered as evidence of skeuomorphism (i.e. imitation of metal prototypes). The fabric is relatively coarse with semi-transparent crystalline grains and white particles with sharp edges as well as organic temper. The biscuit has a thick black core. The jug has a burnished reddish-brown slip (2.5 YR 4/3; 7.5 YR 5/6) on the outside and on the inner part of the neck. The slip is worn in the front and lower part of the vessel. The vessel has been restored.

**BOY 00/03** (*spindle whorl*). The biconical spindle whorl has a perforation along its long axis measuring 0.5 cm in diameter (Fig. 5c). It has two incised zigzag lines encircling it at its widest part. Another incised line encircles the perforation on the upper part. Four alternate vertical incised lines are drawn from this circle, each ending with a small, incised circle 0.5 cm in diameter, dividing the spindle whorl's upper half into four. The spindle whorl is brown slipped and burnished and is a characteristic form for this period.

**BOY 00/04** (*spiral ring*). The copper based spiral ring has a diameter of c. 1.6 cm and a thickness of c. 0.2 cm (Fig. 5d). The two ends of the spiral were flattened, each resembling a 'snake head'. The metal is highly corroded. It might have been used as a ring or more probably as an earring.

The fill of the grave also included the lower half of a big jar / pithos along with various pithos fragments (Fig. 6c) with plastic rope decoration (Fig. 6b) and large knobs (Fig. 6d). Other pottery sherds include the foot of a tripod vessel (Fig. 6e) and rim fragments of a wide mouthed jar (Fig. 6a). The fabrics of these vessels are in accordance with the local fabrics of Boyalık. They are porous due to organic inclusions along with semi-transparent crystalline grains and white grains with sharp edges. All the sherds also show a typical grey core in their biscuit. The leg and the pithos fragments are characterized by the presence of a heavily worn red slip (2.5 YR 4/6) and appear (at least macroscopically) identical to the typical Boyalık fabric, which may be an indication that the pithos fragments belong to the same vessel – a possible pithos burial which is related to Grave 1.

**Çeşme-Boyalık Graves 2 and 3**

Grave 2 was identified in the western part of test trench 2 (Fig. 2). It is the best-preserved example reflecting the general character of the graves at Boyalık cemetery. This grave was cut into the volcanic porous bedrock and has a domed roof (Figs 7, 8 and 9). Only part of the roof was preserved on top of the stomion, located in the front (western) part of the grave. It clearly demonstrates the original shape of these rock-cut chamber tombs at Boyalık cemetery. The grave chamber has a roughly oval shape measuring c. 1.45 m at its widest part and a preserved height of at least 0.80 m. The chamber itself opens to a dromos shaft, which measures c. 1.51 × 0.90 m, through a stomion which was covered on the dromos side by a vertically placed large stone slab

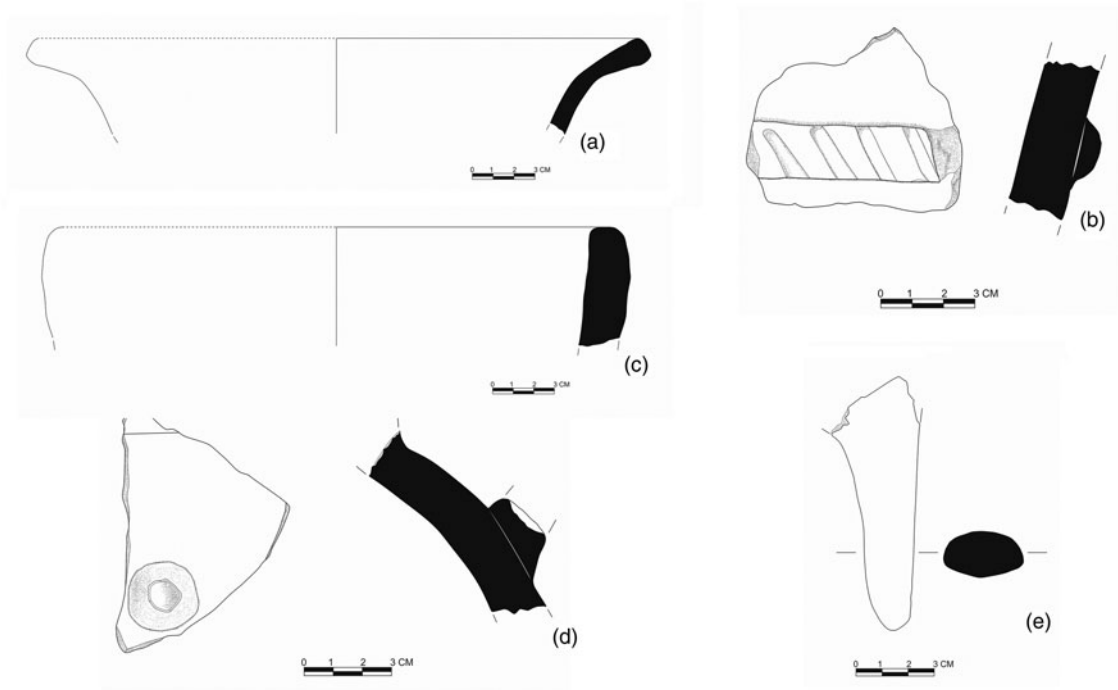


Fig. 6. Pottery fragments from the fill of Çeşme-Boyalık Grave 1. Drawings: Douglas Faulmann.

measuring  $0.85 \times 0.65$  m. The skull was located in the northern part of the chamber and was found adjacent to a 'pillow slab' (Figs 8–9). The skeletal remains in the grave were piled up in the eastern part of the chamber and were overlain by the grave goods. The fact that the grave chamber can be



Fig. 7. Photo of Çeşme-Boyalık Grave 2 showing the domed ceiling of the grave chamber carved into the bedrock. Photo: Hüseyin Vural.





Fig. 8. Photo of Çeşme-Boyalık Grave 2 showing the grave chamber. Photo: Hüseyin Vural.

accessed through the dromos shaft and the stomion at any time, and the multiple burials attested at other similar grave chambers within the cemetery, strongly support the possibility of this grave being used for multiple burials.

Immediately outside the stone slab covering the stomion of the chamber tomb (Grave 2) and inside the dromos shaft was a small pithos grave (Grave 3) (Fig. 10). The pithos (**BOY 00/05**) was lying in a north-south orientation with its mouth facing south. The sides of the horizontally placed pithos were tightly supported by irregular stones. A few rows of stones were placed around the mouth of the pithos to seal its opening, and they encircle the pithos in a roughly rectangular form. The pithos has a short, almost cylindrical neck and a long oval body narrowing towards the flat base (Fig. 11a). It has four vertical handles, two on the shoulder and two on the lower part of the body, on opposite sides. The handles are oval in section, but on the outer faces, two grooves were carved close to the sides, raising the central part of the handle like a ridge. The pithos fabric is reddish brown (5 YR 4/4) and has a thin dark grey core in its biscuit. It is hand made, and is plainly smoothed except for the neck, which is red slipped (10 R 5/8).

Some skeletal remains were discovered inside the pithos, which was devoid of any burial goods. The human bones display evidence of burning, which may indicate a partly cremated body. It is highly likely that the association of this pithos burial with the rock-cut chamber tomb is significant. Any attempt to lift the covering slab of the stomion to gain access to the chamber tomb would have damaged the pithos. The pithos was intact, demonstrating that no further burials were interred in the chamber tomb after the pithos was inserted into the dromos.

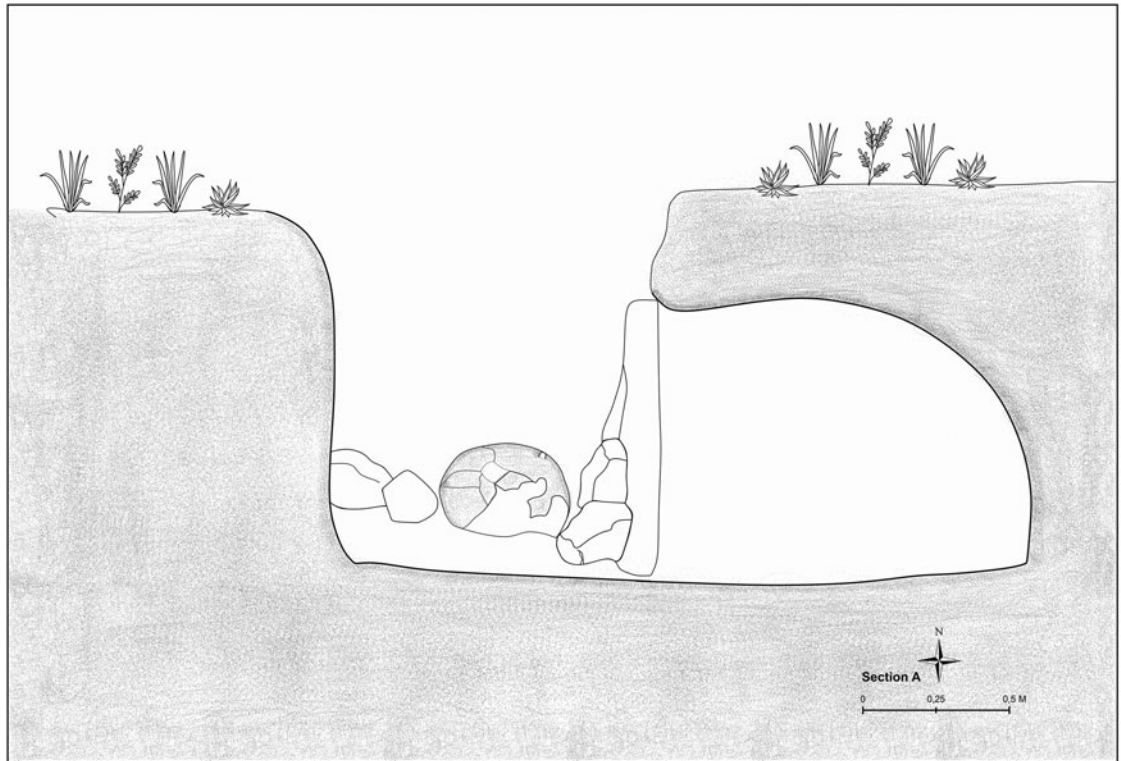
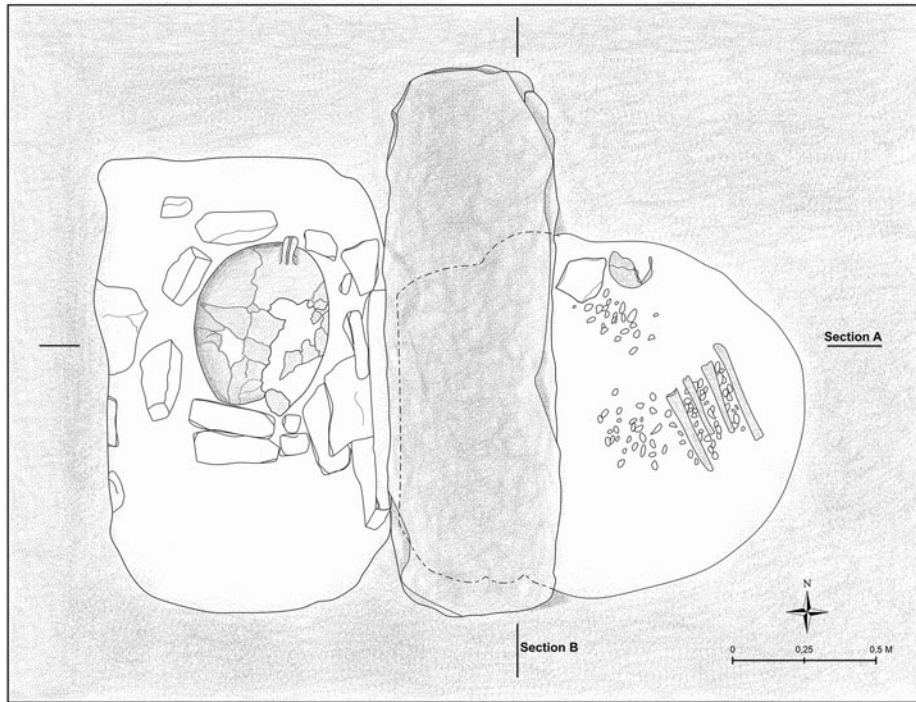


Fig. 9. Plan and section drawing of Çeşme-Boyalık Grave 2. Drawing: Ramazan Güler.



Fig. 10. Photo of Çeşme-Boyalık Grave 3. Photo: Hüseyin Vural.

The inventory of grave finds included a small beak-spouted jug (Fig. 11d) which was located at a higher level than all the other finds in the grave, a pyxis with string-hole lugs and incised decoration (Fig. 11e), an obsidian blade (Fig. 11c) and a small silver figurine depicting a ram (Fig. 11b).

#### *Inventory of finds from Grave 2*

**BOY 00/06** (*beak-spouted jug*). The beak-spouted jug has a short and wide neck narrowing towards the beak (Fig. 11d) which sharply flares, a detail which makes it different from **BOY 00/01**. The neck is inclined towards the back. The body is globular with a flat base. The vertical strap handle, with an oval section, joins the rim at the lower part of the beak-spout to the widest part of the body. Of the three knobs on the vessel, one is located below the front of the spout and the others on either side of the handle, thus slightly differing from the example from Grave 1, which is also larger than this particular example. The vessel is intact, and the fabric seems quite similar to that of the rest of the pottery from the cemetery. The jug is reddish-brown slipped (2.5 YR 4/3) and burnished.

**BOY 00/07** (*incised pyxis*). The pyxis has an everted flaring rim with a collared neck, globular body and a flat base (Fig. 11e). The rim has four pierced string holes more or less equidistant from each other mid-way between the rim and the neck, aligned with the four vertically pierced knob lugs on the widest part of the body. The pyxis clearly had a small lid, which is missing. The vessel is intact but the visible inclusions suggest a similar fabric to that evidenced from the rest of the Boyalık material. It has a reddish-brown slip and is finely burnished. The individual parts of the vessel are emphasised through incised and impressed decoration. Where the mouth of the vessel meets the neck, there is a horizontal incised line encircling the upper part of the neck; another incised line running around the neck's full circumference delineates the neck from the body. In between these two horizontal lines are two rows of impressed dots encircling the lower part of the neck. On the shoulder of the vessel, four panels, each wider at the base and slightly narrowing towards the neck, are placed between the string-hole knob lugs and the holes placed below the rim at the mouth of the vessel. These panels are also filled with impressed dots, sometimes resembling a herringbone pattern. There is evidence that incisions were once filled with a white infill in order to highlight the decoration on the vessel's surface.





Fig. 11. Cat. nos (a) **BOY 00/05**; (b) **BOY 00/09**; (c) **BOY 00/08**; (d) **BOY 00/06**; and (e) **BOY 00/07**. Pithos of Grave 3 and the finds from Grave 2. Drawings: Douglas Faulmann. Photos: Chronis Papanikolopoulos.



**BOY 00/08** (*obsidian blade*). One obsidian blade with a triangular section ( $2.6 \times 0.7 \times 0.25$  cm) was found in this grave (Fig. 11c). The grey veins on the obsidian which are visible in macroscopic analysis more probably indicate a Melian source.

**BOY 00/09** (*ram pendant*). A small silver pendant in the form of a ram, which measures 3 cm in length, 1.3 cm in height and 0.6 cm in width, was also found in Grave 2 (Fig. 11b). It has a long horizontal body and a relatively long neck. The legs of the ram were formed as small triangular projections c. 0.4 cm in height. Its tail is also represented with a triangular projection, which points downwards. Although its body reflects a somewhat more stylised form, the horns of the figurine, above a triangular projection representing the head, are exceptionally naturalistic. A string-hole immediately beneath the neck and above the front legs suggests that this must have been used as a pendant.

#### Çeşme-Boyalık Grave 4 (?)

Grave 4 (?) was discovered outside test trench 2, a few metres north of Grave 1 (Fig. 2). The ‘grave’ comprises a round pit cut into volcanic porous bedrock measuring c. 0.75 m in diameter (Fig. 12). A roof associated with this feature could not be identified during excavation. Nevertheless, a layer of rocky stones was encountered at the uppermost levels, which also included coarse pottery sherds scattered among them. A ‘tripod jar with a spout’ was found below the layer of volcanic porous rubble, c. 1 m below the surface. Various sherds of dark grey / black burnished bowls were also identified adjacent to this vessel. This structure was very poorly preserved in general, and no skeletal remains were recovered. The fact that there were no skeletal remains and the relatively smaller size of this pit also highlight the possibility that it may not be a grave but rather was used as a special deposition pit in relation to certain ritual activities within the cemetery. As explained below, similar features have also been identified elsewhere at the cemetery. On the other hand, various Early Bronze Age cemeteries in Ano Kouphonissi and Euboea, for example, had neither

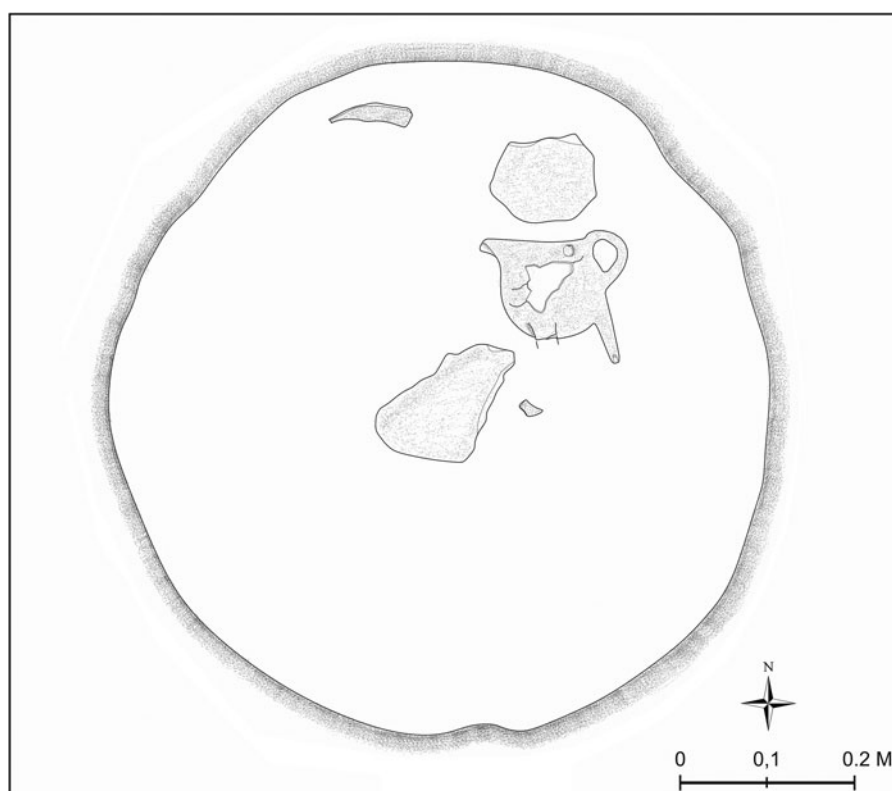


Fig. 12. Plan of Çeşme-Boyalık Grave 4. Drawing: Ramazan Güler.

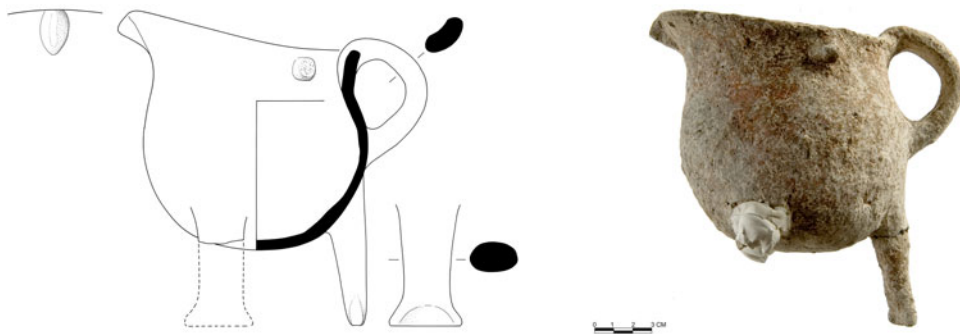


Fig. 13. Cat. no. **BOY 00/10**. Tripod jar found in Çeşme–Boyalık Grave 4. Drawings: Douglas Faulmann. Photo: Chronis Papanikolopoulos.

skeleton nor grave finds in some graves, whereas in a cemetery in Paros, 55 of the 131 graves yielded only pottery and no skeletal remains (Zapheirou 2008, 193).

#### *Inventory of finds from Grave 4 (?)*

**BOY 00/10** ('tripod jar with a spout'). The crudely made 'tripod jar' has a roughly globular body (Fig. 13). The spout of the jug is shaped in the form of a broad flaring rim. A vertically placed strap handle rises above the rim opposite the spout and joins the widest part of the body. Two of the three legs on which the jar rested are absent. The preserved foot of the tripod has a flat, rather than pointed, base. There are three crudely made knobs located below the rim: one on each side of the handle and another beneath the spout. The vessel is poorly fired and its biscuit has a thick black core. On the surface it has a reddish-brown slip (2.5 YR 5/3). The vessel is covered with a thick incrustation due to the character of the soil matrix in the area (Fig. 13).

#### **Çeşme–Boyalık Grave 5**

Grave 5 was excavated in test trench 10 during the 2005 campaign (Fig. 2). This is also a roughly circular pit dug into volcanic porous bedrock. The diameter of the grave is wider at the bottom (c. 1.25 m) but narrows towards the top (c. 1 m) (Fig. 14). Its preserved height is c. 0.80 m. Thus it can be argued that the upper part (roof) of the grave must have collapsed into the chamber itself. This grave presents important evidence that the grave pits 1 and 4 described above should also belong to rock-cut chamber tombs. The grave chamber contained a stone, which might have functioned as a 'pillow slab' as in Graves 1 and 2. Although it was rich in burial goods, there were no skeletal remains preserved in the grave. Grave 5 also included two jug-like pitchers (Fig. 15a,b) and a pyxis with string-hole lugs (Fig. 15c) as grave goods.

#### *Inventory of finds from Grave 5*

**BOY 05/01** (pitcher). The crudely made pitcher has one vertical strap handle rising above the rim and joining the lower part of the body. The opposite part of the mouth is higher and forms an open spout. Part of the rim is broken and there is also a hole created during the excavations on the upper part of the body. The oval bodied pitcher has a rounded base, which makes it impossible for the pot to stand upright. The fabric is medium coarse to coarse and has a black core in its biscuit. It has the same characteristics as other pottery examples from the cemetery. The vessel is mottled reddish-brown slipped (2.5 YR 5/6) on the outside and also on the higher part of the inner surface (Fig. 15a).

**BOY 05/02** (pitcher). The crudely made pitcher has one vertical strap handle rising above the rim and joining the lower part of the body (Fig. 15b). It is larger but almost identical to **BOY 05/01** in form. The oval shaped mouth is higher on the opposite side of the handle and forms an open spout. The fabric is medium coarse to coarse with a black core in its biscuit, and it seems identical to most

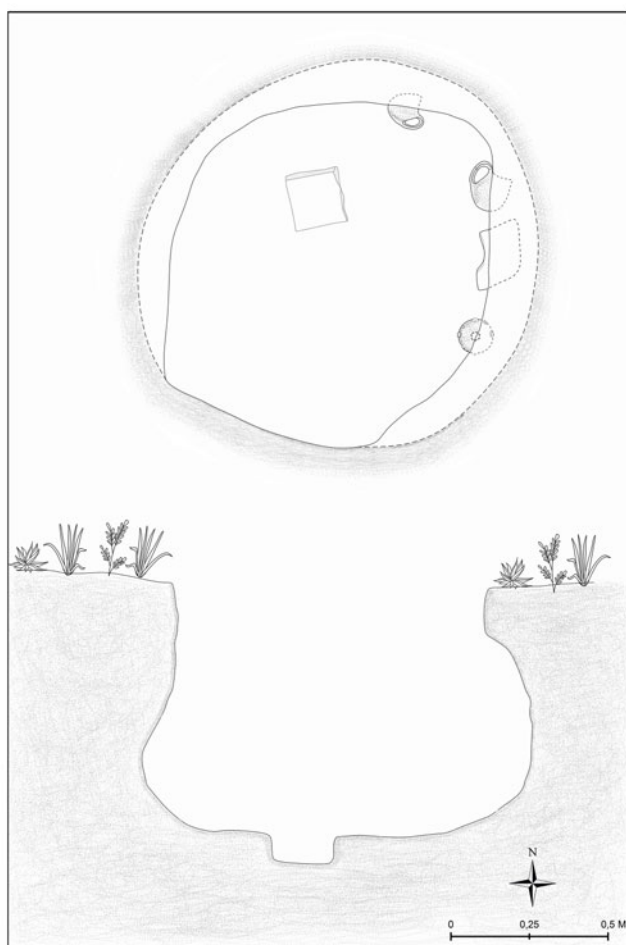


Fig. 14. Photo, plan and section of Çeşme-Boyalık Grave 5. Drawing: Ramazan Güler. Photo: Hüseyin Vural.

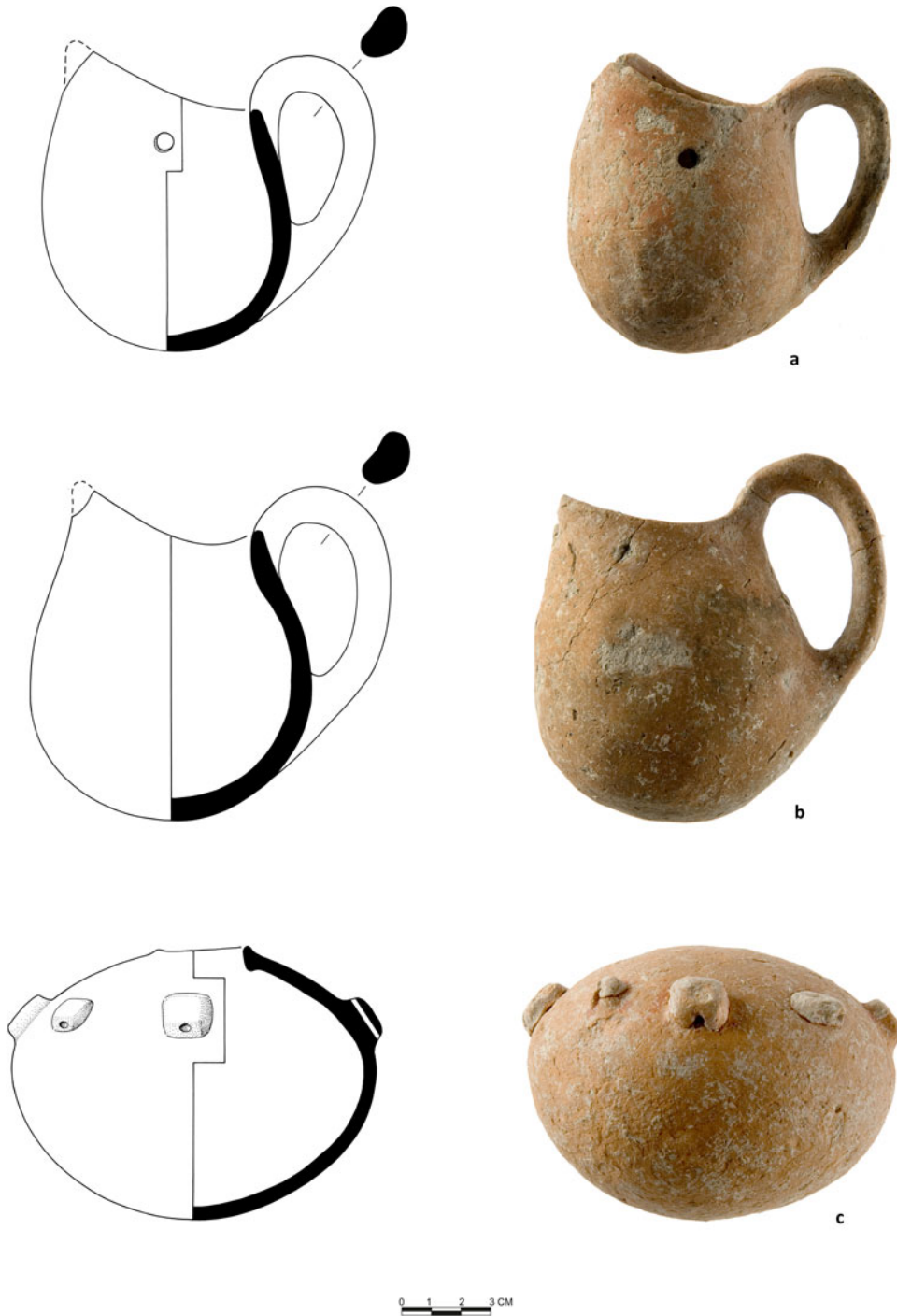


Fig. 15. Cat. nos (a) **BOY 05/01**; (b) **BOY 05/02**; and (c) **BOY 05/03**. Pottery found in Çeşme–Boyalık Grave 5. Drawings: Douglas Faulmann. Photos: Chronis Papanikolopoulos.

of the other ceramic vessels from the cemetery. The pitcher is mottled brown slipped (7.5 YR 5/6), and burnished. The slip is also better preserved than that of **BOY 05/01**. This shape of pitcher/jug is not well documented in western Anatolian grave contexts.

**BOY 05/03** (*pyxis*). The pyxis has no neck but the groove at the mouth of the vessel suggests the presence of a lid, which was not found during the excavations (Fig. 15c). It has a globular body and



a round base. The vessel has eight alternately placed, vertically perforated lugs on the shoulder of the vessel. Four of the lugs are roughly square shaped, measuring 1.7 cm each. The other four alternate lugs are smaller and are shaped as rounded knobs. The pyxis has a much finer micaceous fabric different from the other ceramics in the cemetery. Its flaky fabric also contains fine black mineral inclusions and probably small pieces of grog. The vessel is covered with a red slip, which is heavily worn. The finer fabric and the red slip are reminiscent of the late EB II fine red slipped material well known around the Izmir region from Liman Tepe and Bakla Tepe (Şahoğlu 2008; *in press*).

### Çeşme-Boyalık Grave 6

The final grave excavated in Boyalık cemetery in 2005 is located in Trench 10, south of Grave 5 (Fig. 2). This grave is again a circular pit measuring c. 1.30 m in diameter cut into the volcanic porous bedrock and must also be a rock-cut chamber tomb (Fig. 16). The depth of the grave is c. 1.50 m from the present surface. The preservation of the grave is reminiscent of Grave 1. A

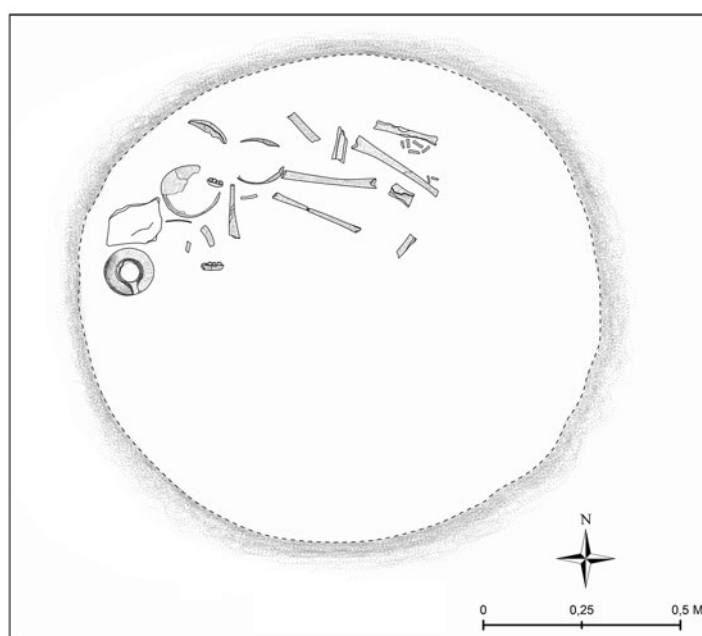


Fig. 16. Photo and plan of Çeşme-Boyalık Grave 6. Drawing: Ramazan Güler. Photo: Hüseyin Vural.



Fig. 17. Cat. no. **BOY 05/04**: jug found in Çeşme–Boyalık Grave 6. Drawing: Douglas Faulmann. Photo: Chronis Papanikolopoulos.

vertical handled black burnished jug was encountered at c. 1.40 m from the surface. Underneath this find, at a lower level, bones and skulls belonging to multiple individuals were found. The skulls were located in the north-west, and the feet of the skeletal remains were at the north-eastern part of the grave chamber. The badly preserved skeletons were in a contracted position. A ‘pillow slab’ was also identified next to a skull as in some of the other graves in the cemetery.

#### *Inventory of finds from Grave 6*

**BOY 05/04 (jug).** The only find from Grave 6 was a jug with a globular body and a round base, which was placed next to the ‘pillow slab’ (Fig. 17). Most of its rim is missing, but judging from the shape, it must be a broad mouthed jug with a strap handle extending from the rim to the widest part of the body. The general morphology of the vessel also resembles an askos. The vessel is grey slipped and well burnished with a black and brown mottled surface (5 Y 2.5/1; 7.5 YR 4/4). The fabric is different from all the other examples in the cemetery and includes fine black mineral inclusions and fine dense white inclusions. The jug is relatively heavy and its fabric is reddish-brown clay with a grey core. Both the shape as well as the surface treatment of this vessel have similarities with ceramics dated to the late EB II period from sites like Liman Tepe and Çeşme–Bağlararası, also on the Urla Peninsula.

#### **Other excavated features at the cemetery**

Various other circular features cut into the bedrock were excavated at Boyalık cemetery that were dug and recorded as pits. Closer examination, however, highlights various details which may provide evidence to suggest that at least some of them were also rock-cut chamber tombs that were exposed to severe disturbance.

One of these circular pits (Pit 1) is located towards the south of test trench 6. This pit, cut into the volcanic porous bedrock, has a diameter of c. 1.80 m. It was excavated down to a depth of 1.50 m. At the depth of c. 1.20 m, a burned layer with a few coarse ceramic sherds was identified (Fig. 2).

Another circular pit cut into the bedrock was located at the western end of test trench 2 (Pit 2) (Fig. 2). The diameter of this pit expanded and reached 1 m as the excavations got deeper. The pit was excavated up to 1.80 m depth. In the end, no archaeological remains were discovered in this pit. But the widening of the pit diameter at the lower part clearly resembles the widening of a grave chamber, which might have been destroyed in ancient times.

Another circular pit cut into the bedrock was identified to the north-east of test trench 2 (Pit 3). The pit has a diameter of c. 1.30 m. The upper layers contained volcanic porous rubble, under which was a layer of soil that yielded shallow bowl fragments. The pit was excavated down to 1.50 m depth (Fig. 2). The ceramics found in this pit all belong to shallow bowls – a vessel type

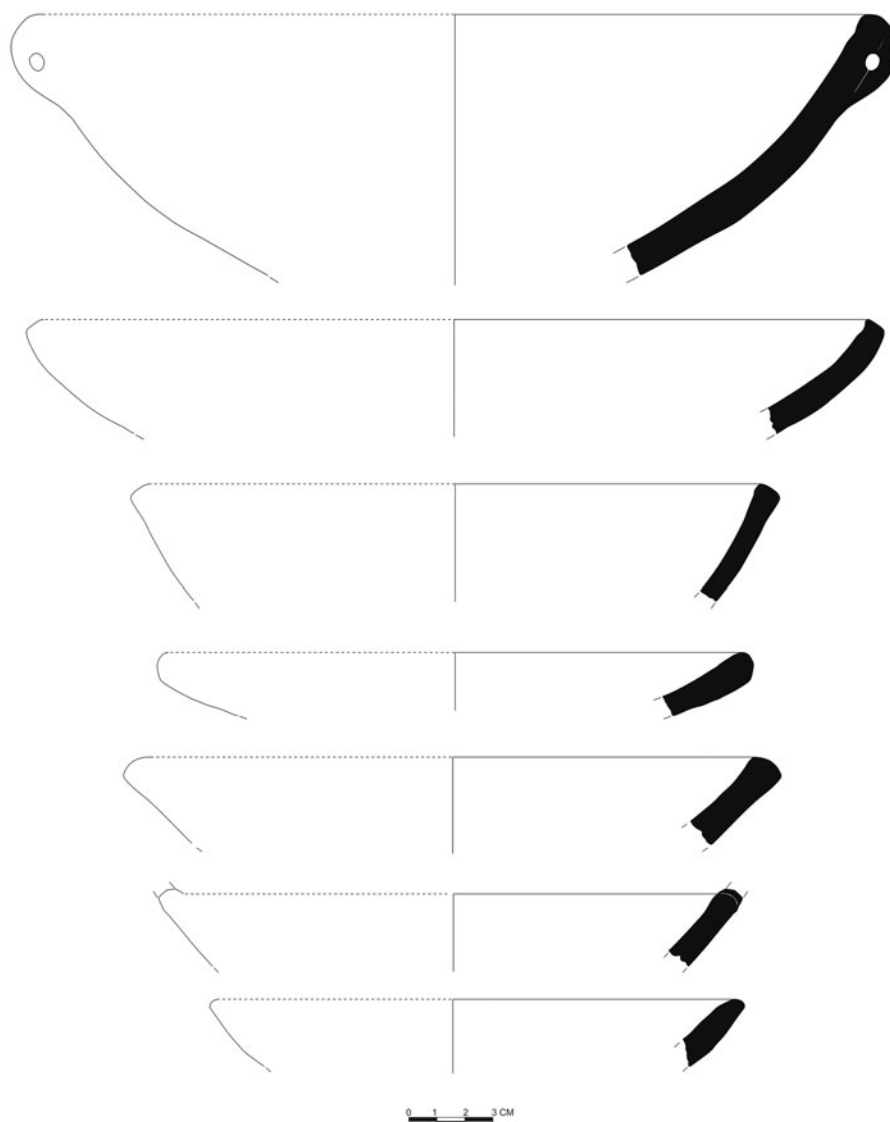


Fig. 18. Pottery fragments found in Pit 3 at Çeşme-Boyalık cemetery. Drawing: Douglas Faulmann.

not attested in the graves (Fig. 18). Most of the sherds are dark grey / black in colour and are well burnished, demonstrating similarities with the surface treatment of the jug from Grave 6 (BOY 05/04) (Fig. 17). Their fabrics accord well with the characteristic Boyalık fabric with inclusions of organic temper, semi-transparent crystalline grains and white grains with sharp edges. Although the stone rich fill in the upper levels of this pit may suggest the collapsed roof of a chamber tomb, the nature of the finds recovered from it may also indicate a different kind of potentially collective ritual activity within the cemetery area – like feasting – related to mortuary rituals.

Excavations in 2000 revealed a ‘channel’-like feature cut into the bedrock in the eastern part of test trench 2, close to Graves 1–3. This ‘channel’ extends in a north-east to south-west direction and measures c. 8 m in length and 1.2 m in width, having a depth of 0.20 m in the excavated part (Fig. 2). Various niches have also been identified on both sides of this corridor. This feature was dug and described as such by the excavators without any additional information. Judging from the dense concentration of the graves around test trench 2, we can speculate that this ‘channel’ might have been a long dromos and the niches might have led to stomia of various rock-cut

chamber tombs on both sides of this path. A similar idea can be seen at a later Middle Bronze Age pithos cemetery in inland western Anatolia, at Afyon–Dede Mezarı cemetery (Üyümez, Koçak and İlyash 2008, 406, drawing 2, photo 7).

The available data at hand suggests that the rest of the cemetery extended further east beneath the newly constructed villas and is now most probably totally destroyed by modern construction.

#### BURIAL PRACTICES AT ÇEŞME–BOYALIK CEMETERY

The rescue excavations at Çeşme–Boyalık extramural cemetery have, for the first time, demonstrated the existence of rock-cut chamber tombs in coastal western Anatolia during the third millennium BC. The best-preserved example (Grave 2) (Figs 7, 8 and 9) indicates that the graves have a roughly circular burial chamber cut into volcanic porous bedrock with a domed roof and accessed from the dromos through a stomion blocked with an upright stone slab. The evidence from Grave 2, where a pithos burial located in the dromos adjacent to the stomion was found, clearly indicates the final usage of the grave chamber. Other tombs (Graves 1, 5 and 6) were discovered without a roof. However, their similarity in shape to Grave 2, the expanding diameter of the grave chamber as it gets deeper in Grave 5 and layers of rocky rubble above the burials in these pits can be considered as evidence for evaluating these graves to be rock-cut chamber tombs. Nevertheless, even if they can be interpreted as rock-cut pit graves, this interpretation also makes them unique, as no such grave type exists in western Anatolian burial habits. The size of the grave chambers at Boyalık measures approximately 1.30–1.70 m in diameter with a height of at least *c.* 0.80 m. Only one stomion was discovered (Grave 2), which opens towards the west / north-west.

Unfortunately, we do not have detailed information regarding the burial postures due to the bad preservation of skeletal material as well as a lack of high-resolution documentation during the excavations. Some of the graves include multiple burials, which is usual for rock-cut chamber tombs. In light of the present evidence, the highest number of individuals in one grave is three (Grave 3). In general, it can be postulated that the skulls were placed in the west / north-west and the feet were extending towards the east / south-east.

One important aspect seen in almost all the graves is the ‘pillow stone’, which in all cases was found next to one of the skulls – presumably the skull of the final burial in the grave. This is a slab stone, which must have been used as a ‘pillow’ according to the burial traditions of the time. Similar examples have been found in the Cyclades, especially at the cemetery of Ayioi Anargyroi at Naxos dating to the Kampos Phase (Doulas 1977, 51–2, fig. 22). At least three of the Keros-Syros Culture tombs at Chalandriani in Syros included slab stones, which must have been used as ‘pillow stones’ (Hekman 2003, 81). Other sites like Ayios Kosmas in Attica (Mylonas 1959; Doulas 1977, 66) and Manika in Euboea (Sampson 1985; 1988), which display Cycladic Kampos Group affinities, also have evidence for slab stones used as ‘pillow stones’ in the graves. The fact that this feature also exists in the Chios–Emporio tomb as well (Hood 1981, fig. 82) may be a strong indication that it is part of the common burial tradition of the central Aegean region covering an area extending from Euboea and Attica towards the eastern Aegean.

At least some of the jugs in Boyalık burials seem to have been placed adjacent to the skull and the ‘pillow stone’, as can be clearly seen in Grave 6. The fact that two beak-spouted jugs from Graves 1 and 2 were found at higher elevations in the grave chambers might mean that there were repeated rituals involving liquids performed during and after the burial process where the jug was left in the grave upon their completion.

Various other features excavated within the investigated area may point to certain other ritual practices at the cemetery. Pit 2, cut into the bedrock within the cemetery (Fig. 2), probably represents another burial chamber that was extensively disturbed in the past. The feature identified as Grave 4 (?), for example, yielded no skeletal data and included a tripod jar with an open spout along with some dark burnished bowl fragments. Pit 1 included a burnt layer with broken pottery, and Pit 3 included many dark burnished bowl fragments (Fig. 18) in contrast to the predominantly pouring vessel types found within the graves. The evidence from these three



features may be an indication for various ritual activities taking place within the Boyalık cemetery similar to the evidence for funerary or post-funerary ceremonies in cemeteries like Tsepi-Marathon in Attica, where a large rectangular pit of late Early Helladic (EH) I date was filled with intentionally broken pottery, sometimes associated with animal remains and many stones. The stones in this assemblage were thought to have been thrown into the pit for smashing the vessels (Pantalidou Gofa 2005). The late Early Cycladic (EC) I cemetery at Ayioi Anargyroi in Naxos provided evidence for a stone paved platform with hat-like vessels closely associated with it (Doumas 1977, 63–4). A number of pits belonging to the EC II–III periods were discovered in Rivari cemetery in Milos, which have been interpreted as evidence of a ritual involving the purification and removal of artefacts (Televantou 2008). These pit deposits seem to include the contents of the earlier tombs, including human bones, and were covered with tuff rubble (Televantou 2008, 214). The covering of the ceremonial pits with a tuff rubble in Rivari may be similar to the evidence from Boyalık Grave 4 (?) and Pit 3 contexts where a layer of broken pottery is also sealed with volcanic porous rubble. Another similar context indicating a special deposit that may be connected to the nearby cemetery has been excavated at Bakla Tepe, dating to the late EB II period (Şahoğlu 2016).

The ‘channel’ at Boyalık cemetery with niches on both sides is another unique feature whose original function unfortunately could not be confirmed. But as explained above, there is a possibility that it could have functioned as a pathway leading to the entrances of various rock-cut chamber tombs that were situated on its sides, as in Afyon–Dede Mezari cemetery of a later Middle Bronze Age date with pithos burials (Üyümez, Koçak and İlyaslı 2008, 406, drawing 2, photo 7).

#### DATING THE ÇEŞME-BOYALIK CEMETERY

The grave goods at Boyalık do not display much variation. Ceramic vessels comprise the main group of finds. All pots are handmade. All but a few have a uniform medium coarse fabric with organic inclusions as well as semi-transparent crystalline grains and white mineral grains with sharp edges. All of the ceramics in the graves belong to pouring vessels with the exception of the two pyxides. Some vessel shapes like **BOY 05/01** and **05/02** (pitchers; Fig. 15ab) from Grave 5 seem to be unique so far with no exact parallels around this region. A somewhat similar shape can be cited from Hacılartepe from north-west Anatolia dating to an earlier EB II phase (Eimermann 2004, fig. 4:8). The beak-spouted jugs have close parallels at the cemeteries of Yortan (Kamil 1982, 94, shape VIII, pl. VIII, figs 38–9, 43–4), Demircihöyük Sariket (Seeher 2000, fig. 18:G.38b), Küçükhöyük (Gürkan and Seeher 1991, fig. 10:4) and Hacılartepe (Eimermann 2004, fig. 7:6). One of the pyxides (**BOY 05/03**) seems to be unique in terms of its fully spherical shape and eight lugs on its shoulder. Its fabric and surface treatment, on the other hand, belong to a special ware group well known in the Izmir region, especially from Liman Tepe and Bakla Tepe. This distinctive fine micaceous ware group, with applied red wash slip, appears for the first time during the earlier part of the late EB II in the Izmir region and is a distinctive element of this period (Şahoğlu 2008, 159–60; *in press*). The incised pyxis (**BOY 00/07**) also belongs to a distinctive type that appears among western Anatolian grave contexts of the EB II–III periods. Similar flat-based or tripod variations of this shape also display a wide distribution at cemeteries like Yortan (Kamil 1982, 83, shape II, pl. IV, figs 25–7), Demircihöyük Sariket (Seeher 2000, fig. 37i), Küçükhöyük (Gürkan and Seeher 1991, fig. 7:1,3) and Kumyer (Akarsu 2013, fig. 144:1–2). A very similar pyxis is also known from Mordoğan (Bittel 1938–41, 21, fig. 18) in the Urla Peninsula, not far from Boyalık.

The silver ram pendant (**BOY 00/09**) (Fig. 11b) from Grave 2 constitutes a unique find with only a few parallels around the Aegean. An exact parallel of this ram pendant comes from a pithos grave (69.3) of late EB II date from Eski Balıkhane near the Gygean Lake, 2 km to the east of Ahlatlı Tepecik near Sardis – an area not too far from Izmir (Mitten and Yügrüm 1971, 192–4; Mitten 2018, pl. 6:6). The Eski Balıkhane example is also of silver and has a string-hole as well. It was found in between the teeth of the skull resting in the grave, further suggesting its

use as a pendant. The context of the Eski Balıkhane pithos grave also includes two black burnished jugs (one of them with a similar arrangement of knobs on the shoulder) and a form defined as ‘tankard’ in the publications – which does not conform to the usual nomenclature of how a tankard is defined in western Anatolia.<sup>3</sup> Apart from these jugs, a copper dagger and two gold-plated ear plugs (Mitten and Yügrüm 1971, figs 4, 5, 6, 7; Mitten 2018, 118, pl. 6:7) formed part of the grave inventory.

Two other similar examples of zoomorphic pendants, one in silver and another in copper, were found within rock-cut chamber tomb no. 200 at Hagia Photia cemetery in northern Crete (Davaras and Betancourt 2004, 180–2, fig. 448:220.22a, 200.22b). The silver one depicts a ram and displays all the details observed on the Boyalık and Eski Balıkhane pendants (Giumlia-Mair, Betancourt and Ferrence 2018, 530, fig. 9). Tomb 200 has a circular anteroom and a grave chamber, which included four burials with 13 vases, eight metal objects, including the silver pendant, and four obsidian blades. The grave context predominantly reflects characteristic Cycladic Kampos Group material like the rest of the cemetery.

Another small lead ram figurine which is currently housed at the Goulandris Museum is of unknown provenance (Stampolidis and Sotirakopoulou 2007, 206–7, cat. no. 64). This example can be considered a figurine, rather than a pendant, as it lacks the string hole. Two additional unprovenanced lead examples of small ram figurines of the same type are mentioned in the publication as belonging to private collections (Stampolidis and Sotirakopoulou 2007, 206). At the settlement of Karataş–Semayük in south-western Anatolia, a silver toggle pin with an animal head (representing a boar and dating to late EB II) is very different in form but remains significant due to the scarcity of silver animal representations from the Aegean and western Anatolian regions during this period (Mellink 1970a, 248, fig. 16ab; Mellink 1970b, 137, fig. 7; Warner 1994, 113, 180, pl. 189b).

Other finds from the Boyalık graves include a bronze spiral ring (Fig. 5d), a spindle whorl (Fig. 5c) and an obsidian blade (Fig. 11c). Similar bronze spiral rings with flattened ends are also well known in western Anatolian grave contexts of late EB II date. Numerous examples were found in pithos burials of the EB II period including the Demircihöyük Sariket (Seeher 2000, Grave 323, p. 155, ill. 39ab) and the Küçükhöyük cemeteries in inland western Anatolia (Gürkan and Seeher 1991, abb. 23:7–21, pl. 15:7). Similar finds are also known from the late EB II period from Kuyruk cemetery in coastal south-western Anatolia (Akarsu 2013, 430, fig. 164, 436, fig. 170).

Biconical incised spindle whorls are also a characteristic type of grave good in western Anatolian extramural cemeteries of the third millennium BC. Similar examples can be seen at Yortan (Kamil 1982, 21, figs 85–6), Küçükhöyük (Gürkan and Seeher 1991, ill. 24–5), Kuyruk (Akarsu 2013, figs 136:3, 138:2–3) and Demircihöyük cemeteries (cf. Seeher 2000, ill. 19, 21, 22 and 25). Obsidian blades are not typical grave goods in coastal western Anatolian burial assemblages but nevertheless, in some cases, can be found in certain burials, as in Kuyruk cemetery Grave 78 (Akarsu 2013, fig. 92:2).

The grave finds unearthed at Boyalık cemetery do not reflect any similarities with grave assemblages from the Cyclades, Greek mainland or Crete, except for the single obsidian find believed to be of Melian origin and the silver ram pendant, which has a very similar parallel from the cemetery at Hagia Photia in Crete (Davaras and Betancourt 2004, 180–2, fig. 448:220.22a, 200.22b) that is dated to Early Minoan IB (the Kampos phase of the Cyclades).

The fact that almost none of the characteristic pottery shapes (namely tankards, bell-shaped cups, tea-pots, cut away spouted jugs or later depas types) found in the late-EB-II- and early-EB-III-period cemeteries of western Anatolia are present at Çeşme–Boyalık suggests that the Boyalık graves most probably belong to a period slightly earlier than the developed stage of the late EB II in western Anatolia. The typological characteristics of the jugs and the incised pyxis can be compared to similar examples from the EB II cemeteries in western Anatolia. The globular pyxis (BOY 05/03) probably represents one of the earliest examples of the fine micaceous red washed ware, which is a characteristic new ware group that defines the beginning

<sup>3</sup> Cf. Şahoğlu 2014 for a typology of ‘Tankard’ vessels.

of the late EB II period around the Izmir region (Şahoğlu 2008, 159–60; *in press*). The pottery from Boyalık cemetery helps us to date the cemetery to a time range extending from the EB II to the earlier part of the late EB II period of western Anatolia.

## A GENERAL OVERVIEW OF THE AEGEAN GRAVE TYPES DURING THE THIRD MILLENNIUM BC

Burial practices are one of the most indicative and strong manifestations of cultural traits. Aegean burial practices of the third millennium BC are part of a dynamic process that reflects regional variations in time and space. The most characteristic grave types of the Early Bronze Age Aegean are cist graves, pithos graves, simple pit burials and rock-cut chamber tombs that display a certain distribution pattern around the Aegean mainland and the Cyclades. Although Crete shares certain common aspects as a result of its socio-economic and political connections with the rest of the Aegean, it reflects a different picture in general.

### Cist graves

Cist graves form the main grave type around the Cyclades during the EC I period (Doulas 1977). This is a tradition that finds its roots already in the Kephala Culture of the region (Coleman 1977) and shows continuity in time. Aghios Kosmas (Mylonas 1959) and Tsepi Marathon in Attica also possess cist graves (Pantalidou Gofa 2005). This grave type continues to be the distinctive form of burial around the Cyclades during the Keros-Syros Culture (EC IIA period). During this period, there is a general increase in the number of graves within cemeteries, and Chalandriani at Syros represents the summit of this increase with more than 500 graves (Hekman 2003; Renfrew 2011, 179). Chalandriani in Syros and graves in some other Cycladic islands also possess another grave type built with dry stone walling. These have been termed ‘corbelled graves’ (Renfrew 2011, 179; Broodbank 2000, 199–200). With the end of the traditional Cycladic Culture by the end of the Keros-Syros Phase, this burial tradition also tends to fade away.

Iasos cemetery in coastal western Anatolia also yielded cist graves similar to Cycladic examples with pottery which can be compared to Kampos Group types (Pacorella 1984). Further north, Bakla Tepe in the Izmir region reflects a different picture during the EB I period with a cemetery including cist, pithos and simple pit graves being used contemporaneously (Şahoğlu 2016). Küçükhöyük (Gürkan and Seeher 1991) and Demircihöyük Sariket (Seeher 2000) possess evidence for the use of stone cist graves along with pithos and simple pit burials (at Demircihöyük Sariket) during the following EB II period.

### Pithos graves

Burial in pithos containers is the traditional burial practice of western Anatolia from at least the beginning of the third millennium onwards (Massa and Şahoğlu 2011; Stech-Wheeler 1974). Intramural infant jar burials are already known at Late Chalcolithic Bakla Tepe (Erkanal and Özkan 1999, 134). Extramural pithos graves have been found at Bakla Tepe alongside cist and simple pit burials during the western Anatolian EB I period. Pithos graves dominate the burial tradition of western Anatolia during the following EB II and III periods as can be evidenced at extramural cemeteries like Yortan (Kamil 1982), Babaköy (Bittel 1939–41), Küçükhöyük (Gürkan and Seeher 1991), Demircihöyük Sariket (Seeher 2000), Bakla Tepe (Şahoğlu 2016), Kумыer (Akarsu 2013), Çapalıbağ (Oğuzhanoglu and Pazarcı 2020), Kesikservi (Aykurt et al. 2023), Gündürle Harmanören (Özsait 2000) and Karataş-Semayük (Stech-Wheeler 1974). Pithos graves are very few in number in the southern and western Aegean where they are clearly not at home.

### Simple pit burials

Simple pit burials are one of the typical burial types of western Anatolia during the third millennium BC. This type is attested at the EB I cemetery of Bakla Tepe along with cist and pithos graves (Massa and Şahoğlu 2011; Şahoğlu 2016). Demircihöyük Sariket cemetery in inland western Anatolia also possesses simple pit burials along with cist and pithos graves during the following EB II period (Seeher 2000; Massa 2014). Simple pits are also found at settlements sometimes including infant burials.

### Rock-cut chamber tombs

Rock-cut chamber tombs of the third-millennium Aegean have previously been discussed in detail in various publications (Cultraro 2000; Sapouna-Sakellarakis 1987; Sotirakopoulou 2008). Among them, important evidence comes from those found at Agrilia–Ano Kouphonisi (Zapheirpoulou 1983; 2008), Phylakopi–Melos (Edgar 1897; Papadopoulou 1965, 513), Rivari–Melos (Televantou 2008) and Akrotiri–Thera (Doulmas 2008)<sup>4</sup> on the Cyclades, Manika (Papavasileiou 1910, 2–20; Sampson 1985, 153–316; 1988) and Kephisos (Athens) (Asimakou 2019) on mainland Greece, Aghia Photia (Davaras and Betancourt 2004; Betancourt 2008) on Crete, and Emporio in Chios (Hood 1981, 150–2, fig. 82).

The extensive cemetery of Manika in Euboea (Sampson 1985; 1988; Sapouna-Sakellarakis 1987) has rock-cut chamber tombs with Cycladic affinities during the later phases of the EH I period. The Manika cemetery continues to be used into the ‘Lefkandi I’ period (Sampson 1985; 1988; Sapouna-Sakellarakis 1987, 256). Burials at Kephisos–Aegaleo in Attica on the Greek mainland also possess similar rock-cut chamber tombs which date to the late EH I (Cycladic Kampos) phase (Asimakou 2019). Various other cemeteries with rock-cut chamber tombs were found at sites like Corinth or Lithares on the Greek mainland and have been discussed by Sapouna-Sakellarakis (1987, 258–9).

Agrilia and two other cemeteries in Ano Kouphonissi seem to be the only known cemeteries with rock-cut chamber tombs dating to the first half of the third millennium BC around the Cyclades. These cemeteries belong to the Kampos Phase of the EC I period (Zapheirpoulou 2008). An exceptionally similar type of cemetery of the same date has also been investigated at Aghia Photia on the northern coast of east Crete (Davaras and Betancourt 2004). Both of these cemeteries yielded a certain type of rock-cut chamber tomb with a dromos and a grave chamber with a stone slab blocking the stomion.<sup>5</sup> The unique connection between these two cemeteries is discussed in detail by Broodbank (2000, 300–4). Rivari at Melos in the Cyclades also has rock-cut chamber tombs, which are dated to the EC II–III periods (Televantou 2008). Various other rock-cut chamber tombs at Melos were unfortunately not properly excavated and were mainly plundered, making accurate dating impossible (Edgar 1897; Papadopoulou 1965, 513; Doulmas 1977, 49). They are, nevertheless, generally dated to the ‘Phylakopi I’ phase (EC III) (Doulmas 1977, 49, 53). Rock-cut chamber tombs at Akrotiri on Thera are also dated to the EC II–III periods. A rock-cut chamber tomb at Emporio on Chios in the eastern Aegean is also dated to the EB II period (Hood 1981, 150–2, fig. 82). The rock-cut chamber tomb is a unique burial type with a peculiar distribution pattern in terms of time and space around the Aegean. Lack of research must be the primary reason for the patchy picture that is evidenced for this particular type of burial.

Except for some distinct cemetery data mentioned above (Betancourt 2008; Davaras and Betancourt 2004; Day, Wilson and Kiriati 1998), Crete generally displays a different picture from the rest of the Aegean in terms of burial practices throughout the third millennium BC. The most characteristic grave types of the island include tholos graves and house tombs, although various cases of cave burials, larnax pithos, and cist burials are also noted (Branigan 1970; Herrero 2014; Papadatos 2005; Soles 1992; Vavouranakis 2011). Cyprus is another place where rock-cut chamber tombs constitute an important place within the island’s burial

<sup>4</sup> Doulmas (2008) believes these are grave chambers, whereas Sotirakopoulou (2008, 134) disagrees.

<sup>5</sup> See Davaras and Betancourt 2004, 233, fig. 572 for a typical grave form.



traditions. Burying the dead in rock-cut shaft graves was in practice during the Cypriot Middle Chalcolithic Period at Souskiou-*Vathyrkakas* (Peltenburg 2006) and Souskiou-*Laona* (Peltenburg, Bolger and Crewe 2019) in western Cyprus. Starting from the Late Chalcolithic and especially with the beginning of the *Philia* phase, as evidenced at Kissonerga Mosphilia (Peltenburg 1998) and other cemeteries like Vasilia on the northern coast of the island (Hennessy, Eriksson and Kehrberg 1988), rock-cut chamber tombs of the Çeşme-Boyalık type also began to appear in the island as a part of new cultural elements that are related to the Anatolian connections of Cyprus (Webb and Frankel 1999) during the Anatolian Trade Network period.

### CONCLUDING REMARKS

The discovery of an extramural cemetery with a rock-cut chamber tomb tradition at Çeşme-Boyalık is unique and adds a new perspective to our understanding of the burial practices in central coastal western Anatolia / eastern Aegean and particularly around the Urla Peninsula during the third millennium BC. The rock-cut chamber tombs of the third millennium BC on the Greek mainland and Crete are usually considered to be part of cemeteries with strong Cycladic affinities, especially in terms of the grave goods found in them. Çeşme-Boyalık cemetery, on the other hand, is so far unique in the western Anatolian coastline in terms of its grave type. In contrast to this assumed Cycladic character of the grave types, the grave goods reflect almost no affinities with the Cyclades except for the obsidian blade, which must have come from Melos, and the silver ram pendant, which is closely paralleled with the example from Aghia Photia cemetery in Crete. On the contrary, the pottery from the Boyalık graves seems to have very close parallels with other cemeteries around western Anatolia.

Due to massive modern construction in the entire area, no nearby settlement of this period is known to date. The closest systematically investigated settlement is Çeşme-Bağlararası, which is located at the centre of Çeşme, approximately 2.5 km west of Boyalık cemetery (Şahoğlu et al. 2018; Şahoğlu, Çayır and Gündoğan *in press*). Çeşme-Bağlararası is a coastal settlement dating to the middle of the third millennium BC. The site reflects a characteristic coastal western Anatolian settlement model that fits the 'Aegean Settlement Pattern' (Gündoğan 2020). As no burials have been found within the excavated settlement, there is a strong possibility that Çeşme-Bağlararası also has an extramural cemetery as in all the other western Anatolian Early Bronze Age settlements. Although Boyalık cemetery is located in close proximity to Bağlararası, it should have its own settlement, which is most probably lost forever due to heavy modern construction in that area, and Bağlararası should have its extramural cemetery at a much closer location to the site. Çeşme-Bağlararası reflects a local coastal settlement during this period with little maritime connections with the western Aegean (Şahoğlu et al. 2018; Şahoğlu, Çayır and Gündoğan *in press*) – an interesting aspect also reflected at Boyalık cemetery, as highlighted above.

One of the most important reasons behind the more local character of this area during the middle of the third millennium BC must be sought in the specific geographic location of the region and the navigation routes of the Aegean Sea based on the maritime technologies of the period. In a world without sails, the western tip of Urla Peninsula is one of the most difficult and dangerous areas to be navigated in the Aegean Sea. Liman Tepe, which is situated at the northern end of the narrowest land point of the Urla Peninsula joining the southern to the northern Aegean Sea – c. 60 km from Bağlararası and Boyalık – seems to be a major maritime hub during this period (Şahoğlu 2005; 2019). A probable cartage route joining the two seas ending at Liman Tepe in the north must have accelerated the importance of this site during this period (Şahoğlu 2005, fig. 1b). As a result of the difficulty of navigating the rough Aegean Sea with the longboats of the period, Çeşme-Bağlararası and Boyalık, areas with little resources to offer, were most probably ignored and excluded from the maritime networks of the period. This seems to be the reason for the local characters of the sites at the western tip of the Urla Peninsula. The data from the Boyalık cemetery and nearby settlement at Çeşme-Bağlararası are

now giving us a different picture of the socio-economic dynamics and micro-regional differences around the western Anatolian coastline that are triggered through geographical locations and technological advances in maritime mobility.

The dating of the Boyalık cemetery also makes it unique among the known cemeteries of the eastern Aegean coastline. In light of the grave goods, the cemetery can be dated to an advanced stage of the EB II period, around the beginning of the late EB II, c. 2600/2500 BC. This period also marks the first manifestation of the Anatolian Trade Network (Şahoğlu 2005; 2019) on the central western Anatolian coastline, highlighting the importance of the Izmir region and particularly the Urla Peninsula as a gateway, integrating the inland cultural elements of Anatolia with those of the Aegean and beyond. The cemetery at Çeşme–Boyalık can be dated to the earlier phase of the Anatolian Trade Network. The presence of rock-cut chamber tombs in Çeşme–Boyalık and the singular example at Chios–Emporio clearly represent the presence of this tradition around the central eastern Aegean zone around this time.

#### ACKNOWLEDGEMENTS

Excavations at Çeşme–Boyalık Early Bronze Age cemetery were carried out by archaeologist Hüseyin Vural as part of the rescue work undertaken by the Çeşme Archaeological Museum in 2000 and 2005. I would like to extend my gratitude to him for sharing his documentation of the excavations with me. I would also like to thank the Ministry of Culture and Tourism of the Turkish Republic for the permit to study this material. I would further like to extend my thanks to INSTAP and INSTAP–SCEC publication team members Douglas Faulmann and Chronis Papanikolopoulos for their amazing work in documenting the finds. My students and colleagues Dr Ümit Gündoğan and Ramazan Güler kindly contributed to the preparation of the maps and the re-drawings of the graves used. I am grateful for their efforts. I would like to thank Dr Evangelia Kiriati and Dr Rıza Tuncel for their valuable comments on the earlier versions of this work and also Ash Rennie for his proofreading on the English text and Dr Ourania Kouka for her translation of the abstract into Greek. The study of the finds from Çeşme–Boyalık cemetery has been carried out as part of our long-term archaeological investigations within the framework of the Izmir Region Excavations and Research Project (IRERP) of Ankara University Mustafa V. Koç Research Center for Maritime Archaeology (ANKÜSAM), which was initiated by the late Prof. Dr Hayat Erkanal.

[sahoglu@ankara.edu.tr](mailto:sahoglu@ankara.edu.tr)

#### REFERENCES

- Akarsu, B.M. 2013. ‘Batı Anadolu’da İlk Tunç Çağı mezarlık geleneği’ (unpublished PhD thesis, Selçuk University).
- Asimakou, E. 2019. ‘A schematic figurine from the area of Kephisos in Aegaleo, Athens’, in M. Mathari, C. Renfrew and M.J. Boyd (eds), *Beyond the Cyclades: Early Cycladic Sculpture in Context from Mainland Greece, the North and East Aegean* (Oxford), 67–75.
- Aykurt, A., Büyükulusoy, K., Benli-Bağcı, E. and Deniz, S. 2023. *Bodrum Kesikservi Erken Tunç Çağı I mezarlığı* (Ankara).
- Betancourt, P.P. 2008. ‘The cemetery at Hagia Photia, Crete’, in N. Brodie, J. Doole, G. Gavalas and C. Renfrew (eds), *HORIZON: A Colloquium on the Prehistory of the Cyclades* (Cambridge), 237–40.
- Bittel, K. 1939–41. ‘Ein Graeberfeld der Yortan-Kultur bei Babaköy’, *AfO* 13, 1–31.
- Branigan, K. 1970. *The Tombs of Mesara: A Study of Funerary Architecture and Ritual in Southern Crete, 2800–1700 BC* (London).
- Broodbank, C. 2000. *An Island Archaeology of the Early Cyclades* (Cambridge).
- Çilingiroğlu, A., Derin, Z., Abay, E., Sağlamtimur, H. and Kayan, İ. 2004. *Ulucak Höyük Excavations Conducted between 1995 and 2000* (Louvain).
- Coleman, J.E. 1977. *Keos I, Kephala: A Late Neolithic Settlement and Cemetery* (Princeton, NJ).
- Cultraro, M. 2000. ‘Il tipo di tomba ipogeica a grotticella artificiale in ambito Egeo: alcune osservazioni’, in *L’Ipogeismo nel Mediterraneo: origini, sviluppo, quadri culturali: atti del Congresso*

- internazionale*, 23–28 maggio 1994 (Sassari-Oristano), 473–99.
- Davaras, C. and Betancourt, P.P. 2004. *The Hagia Photia Cemetery I: The Tomb Groups and Architecture* (Philadelphia, PA).
- Day, P.M., Wilson, D.E. and Kiriati, E. 1998. 'Pots, labels and people: burying ethnicity in the cemetery at Aghia Photia', in K. Branigan (ed.), *Cemetery and Society in the Aegean Bronze Age* (Sheffield), 133–49.
- Derin, Z. 2019. 'İzmir'de 5 bin yıllık yerleşim alanı Yassitepe'de yeni keşifler', in H. Göncü, A. Ersoy and D.S. Akar Tanrıver (eds), *SMYRNA / İZMİR kazı ve araştırmaları III* (Istanbul), 1–16.
- Doumas, Chr. 1977. *Early Bronze Age Burial Habits in the Cyclades* (Gothenburg).
- Doumas, Chr. 2008. 'Chambers of mystery', in N. Brodie, J. Doole, G. Gavalas and C. Renfrew (eds), *HORIZON: A Colloquium on the Prehistory of the Cyclades* (Cambridge), 165–75.
- Edgar, C.C. 1897. 'Prehistoric tombs at Pelos', *BSA* 3, 35–51.
- Efe, T. 2000. 'Seyitgazi / Küllüoba kazısı', in O. Belli (ed.), *Türkiye arkeolojisi ve İstanbul Üniversitesi (1932–1999)* (Istanbul), 118–22.
- Efe, T. and Ay-Efe, D.M.Ş. 2001. 'Küllüoba: İç kuzeybatı Anadolu'da bir İlk Tunç Çağı kenti – 1996–2000 yılları arasında yapılan kazı çalışmalarının genel bir değerlendirmesi', *Turkish Academy of Sciences Journal of Archaeology* 4, 43–78.
- Eimermann, E. 2004. 'Soundings at Early Bronze Age Hacılartepe in the Iznik region (NW Anatolia)', *Anatolica* 30, 15–36.
- Erkanal, H. 1996. 'Early Bronze Age urbanization in the coastal region of western Anatolia', in Y. Sey (ed.), *Habitat II. Housing and Settlement in Anatolia: A Historical Perspective* (Istanbul), 70–82.
- Erkanal, H. 1999. 'Early Bronze Age fortification systems in the İzmir region', in P.P. Betancourt, V. Karageorgis, R. Laffineur and W.D. Niemeier (eds), *MELETEMATA: Studies in Aegean Archaeology Presented to Malcolm H. Wiener as He Enters His 65th Year (Aegaeum 20; Liège and Austin, TX)*, 237–42.
- Erkanal, H. 2001. 'Liman Tepe: tarih öncesi Ege kültürlerine yeni bir ışık', *Cogito* 28, 304–16.
- Erkanal, H. 2008a. 'Liman Tepe: new light on the prehistoric Aegean cultures', in H. Erkanal, H. Hauptmann, V. Şahoğlu and R. Tuncel (eds), *Proceedings of the International Symposium 'The Aegean in the Neolithic, Chalcolithic and Early Bronze Age'*, Urla, 13–19 October 1997 (Ankara), 179–90.
- Erkanal, H. 2008b. 'Die neuen Forschungen in Bakla Tepe bei İzmir', in H. Erkanal, H. Hauptmann, V. Şahoğlu and R. Tuncel (eds), *Proceedings of the International Symposium 'The Aegean in the Neolithic, Chalcolithic and Early Bronze Age'*, Urla, 13–19 October 1997 (Ankara), 165–77.
- Erkanal, H. and Erkanal, A. 2015. 'Neue Forschungen im vorgeschichtlichen Mittelwestanatolien: Bakla Tepe, Liman Tepe, Çeşme – Bağlararası und Panaztepe', in Ü. Yalçın and H.-D. Bienert (eds), *Anatolien – Brücke Der Kulturen* (Bonn), 185–203.
- Erkanal, H. and Özkan, T. 1999. 'Excavations at Bakla Tepe', in T. Özkan and H. Erkanal (eds), *Tahtalı Barajı kurtarma kazısı projesi* (İzmir), 12–41, 108–37.
- Erkanal, H. and Özkan, T. 2000. '1998 Bakla Tepe kazıları', in 21. *Kazı Sonuçları Toplantısı*, vol. 1 (Ankara), 263–78.
- Erkanal, H. and Şahoğlu, V. 2012a. 'Liman Tepe', in O. Bingöl, A. Öztan and H. Taşkıran (eds), *Dil ve Tarih Coğrafya Fakültesi 75. Yıl Armağanı Arkeoloji Bölümü Tarihçesi ve Kazıları (1936–2011)* (Ankara), 219–30.
- Erkanal, H. and Şahoğlu, V. 2012b. 'Bakla Tepe', in O. Bingöl, A. Öztan and H. Taşkıran (eds), *Dil ve Tarih Coğrafya Fakültesi 75. Yıl Armağanı Arkeoloji Bölümü Tarihçesi ve Kazıları (1936–2011)* (Ankara), 91–8.
- Erkanal, H. and Şahoğlu, V. 2016. 'Liman Tepe. An Early Bronze Age trade center in western Anatolia: recent investigations', in E. Pernicka, S. Ünlüsoy and S. Blum (eds), *Early Bronze Age Troy: Chronology, Cultural Development and Interregional Contacts* (Bonn), 157–66.
- Giumlia-Mair, A., Betancourt, P. and Ferrence, S. 2018. 'Arsenic in the network: arsenical copper in Minoan Crete', in A. Giumlia-Mair and F. Lo Schiavo (eds), *Bronze Age Metallurgy on Mediterranean Islands, in Honor of Robert Maddin and Vassos Karageorgis (Drémil-Lafage)*, 520–40.
- Gündoğan, Ü. 2020. 'The "Aegean Settlement Pattern" in coastal western Anatolia from the Neolithic Age to the end of the 3rd millennium BC', *Turkish Academy of Sciences Journal of Archaeology* 27, 29–43.
- Gündoğan, Ü., Şahoğlu, V. and Erkanal, H. 2019. 'Spatial organization and production activities at Bakla Tepe during the first half of the 3rd millennium BC', *DTCF Dergisi* 59.2, 1087–110.
- Günel, S. 2014. 'New contributions regarding prehistoric cultures in the Meander region: Çine-Tepecik', in B. Horejs (ed.), *Western Anatolia before Troy: Proto-Urbanisation in the 4th Millennium BC? Proceedings of the International Symposium Held at the Kunsthistorisches Museum Wien, 21–24 November, 2012* (Vienna), 83–104.
- Günel, S. 2023. 'Büyük Menderes Bölgesinin Erken Tunç Çağı'nda Çine Tepecik', in V. Şahoğlu, İ. Tuğcu, O. Kouka, Ü. Gündoğan, Ü. Çayır, R. Tuncel and A. Erkanal-Öktü (eds), *HAYAT: A Life Dedicated to Archaeology: Studies in Mediterranean Archaeology in Memory of Hayat Erkanal* (Ankara), 161–79.
- Gürkan, G. and Seeher, J. 1991. 'Die Frühbronzezeitliche Nekropole von Küçükhöyük bei Bozüyük', *IstMitt* 41, 39–96.
- Hekman, J.J. 2003. *The Early Bronze Age Cemetery at Chalandriani on Syros (Cyclades, Greece)* (Assen).
- Hennessy, J.B., Eriksson, K.O. and Kehrberg, I.C. 1988. *Ayia Paraskevi and Vasilia. Excavations by J.R.B. Stewart (SIMA 82; Gothenburg)*.
- Herrero, B.L. 2014. *Mortuary Behavior and Social Trajectories in Pre- and Protopalatial Crete* (Philadelphia, PA).
- Hood, S. 1981. *Excavations in Chios 1938–1955. Prehistoric Emporio and Ayio Gala I* (Oxford).
- Horejs, B. and Mehofer, M. 2015. 'Early Bronze Age metal workshops at Çukuriçi Höyük. Production of arsenical copper at the beginning of the 3rd millennium BC', in A. Hauptmann and D. Modarressi-Tehrani (eds), *Der Anschnitt. Beiheft 26: Archaeometallurgy in Europe 3* (Bochum), 165–76.

- Horejs, B. and Schwall, C. 2018. 'Interaction as a stimulus? Çukuriçi Höyük and the transition from the Late Chalcolithic Period to the Early Bronze Age in western Anatolia', in S. Dietz, F. Mavridis, Z. Tankosic and T. Takaoğlu (eds), *Communities in Transition: The Circum-Aegean Area during the 5th and 4th Millennia BC* (Oxford), 530–7.
- Hüryılmaz, H. 2006a. 'Gökçeada-Yenibademlihöyük yerleşmecilerinin Erken Bronz Çağı'nda deniz aşırı ilişkileri', *Hacettepe Üniversitesi Sosyal Bilimler Fakültesi Dergisi* 5.17, 1–9.
- Hüryılmaz, H. 2006b. 'Gökçeada-Yenibademlihöyük'te kent organizasyonu ve yönetim', *Hacettepe Üniversitesi Sosyal Bilimler Fakültesi Dergisi* 5.18, 30–43.
- Joukowsky, M.S. 1986. *Prehistoric Aphrodisias: An Account of the Excavations and Artifact Studies* (Louvain).
- Kamil, T. 1982. *Yortan Cemetery in the Early Bronze Age of Western Anatolia (BAR-IS 145; Oxford)*.
- Keskin, L. 2008. 'Ring idols of Bakla Tepe: the distribution of this type in Anatolia with particular references to the Aegean and Balkans', in O. Menozzi, M.L. Di Marzio and D. Fossataro (eds), *SOMA 2005: Proceedings of the IX Symposium on Mediterranean Archaeology, Chieti (Italy), 24–26 February 2005* (Oxford), 87–95.
- Korfmann, M. 2001. 'Troia als Drehscheibe des Handels in 2. und 3. vorchristlicher Jahrtausend. Erkenntnisse zur Trojanischen Hochkultur und zur Maritimen Troia Kultur', in Archäologisches Landesmuseum Baden-Württemberg (ed.), *Traum Und Wirklichkeit: Troia* (Stuttgart), 355–68.
- Koşay, H.Z. 1951. *Türk Tarih Kurumu adına yapılan Alacahöyük Kazısı, 1937–1939'daki çalışmalara ve keşiflere ait ilk rapor – Les fouilles d'Alaca Höyük entreprises par la Société d'Histoire Turque. Rapport Préliminaire sur les travaux en 1937–1939* (Ankara).
- Koşay, H.Z. and Akok, M. 1950. 'Amasya Mahmatlar Köyü definesi', *Belleten* 14, 481–5.
- Lloyd, S. and Mellaart, J. 1962. *Beycesultan, vol. 1: The Chalcolithic and Early Bronze Age Levels* (London).
- Massa, M. 2014. 'Early Bronze Age burial customs on the central Anatolian plateau: a view from Demircihöyük-Sarıket', *AnatSt* 64, 73–93.
- Massa, M. and Şahoğlu, V. 2011. 'Western Anatolian burial customs during the Early Bronze Age / Erken Tunç Çağı'nda Batı Anadolu'da ölü gömme gelenekleri', in V. Şahoğlu and P. Sotirakopoulou (eds), *ACROSS: The Cyclades and Western Anatolia during the 3rd Millennium BC* (Istanbul), 164–71.
- Mellink, M.J. 1970a. 'Excavations at Karataş-Semayük and Elmalı, Lycia 1969', *AJA* 74, 245–53.
- Mellink, M.J. 1970b. 'Excavations at Karataş-Semayük 1969', *TürkArkDerg* 18.2, 137–9.
- Mellink, M.J. 1994. 'The EB II–III transition at Karataş-Semayük: village center and cemetery', in 15. *Kazı Sonuçları Toplantısı*, vol. 1 (Ankara), 457–9.
- Mitten, D.G. 2018. 'A pithos burial at Sardis', in E. Simpson (ed.), *The Adventure of the Illustrious Scholar. Papers Presented to Oscar White Muscarella* (Leiden), 117–23.
- Mitten, D.G. and Yügrüm, G. 1971. 'The Gygean Lake, 1969: Eski Balikhane, preliminary report', *HSCP* 75, 191–5.
- Mylonas, G.E. 1959. *Aghios Kosmas: An Early Bronze Age Settlement and Cemetery in Attica* (Princeton, NJ).
- Oğuzhanoglu, U. 2022. 'The Early Bronze Age Caria revisited', *Turkish Academy of Sciences Journal of Archaeology* 30, 1–20.
- Oğuzhanoglu, U. and Pazarcı, S. 2020. 'Karia Bölgesi'nde yeni bir Erken Tunç Çağı merkezi: Çapalıbağ', *Hacettepe Üniversitesi Edebiyat Fakültesi Dergisi* 37.1, 195–219.
- Özgüç, T. 1948. *Ön tarihte Anadolu'da Ölü Gömme Adetleri* (Ankara).
- Özgüç, T. 1978. *Maşat Höyük Kazıları ve Çevresindeki Araştırmalar / Excavations at Maşat Höyük and Investigations in its Vicinity* (Ankara).
- Özgüç, T. and Akok, M. 1958. *Horoztepe Eski Tunç Devri Mezarlığı ve İskân Yeri* (Ankara).
- Özgüç, T. and Temizer, R. 1993. 'The Eskiyyapar treasure', in M.J. Mellink, E. Porada and T. Özgüç (eds), *Aspects of Art and Iconography: Anatolia and its Neighbours, Studies in Honor of Nimet Özgüç* (Ankara), 613–28.
- Özsait, M. 2000. '1998 yılı Harmanören (Gündürle Höyük) mezarlık kazısı', in 21. *Kazı Sonuçları Toplantısı*, vol. 1 (Ankara), 371–80.
- Öztürk, G. and Kulakoğlu, F. 2019. 'Kızılırmak kavsinin güneyinde yeni bir ölü gömme geleneği: Kültepe İnler Dağı extramural mezarlığı', *DTCF Dergisi* 59.1, 693–716.
- Pacorella, P.E. 1984. *La cultura preistorica di Iasos in Caria* (Rome).
- Pantalidou Gofa, M. 2005. *Τσέπι Μαπαθώνος. Το πρωτοελλαδικό νεκροταφείο* (Athens).
- Papadatos, Y. 2005. *Tholos Tomb Gamma: A Prepalatial Tholos Tomb at Phourni, Archanes* (Philadelphia, PA).
- Papadopoulou, P. 1965. "Μήλος", *ArchDelt* 20 (B), 508–14.
- Papavasileiou, G.A. 1910. *Περί των εν Ευβοία αρχαίων τάφων* (Athens).
- Peltenburg, E. 1998. *Lemba Archaeological Project II.IA: Excavations at Kissonerga-Mosphilia 1979–1992* (SIMA 70.2; Jonsered).
- Peltenburg, E. (ed.) 2006. *The Chalcolithic Cemetery of Souskiou-Vathyrkakas, Cyprus. Investigations of Four Missions from 1950 to 1997* (Nicosia).
- Peltenburg, E., Bolger, D. and Crewe, L. (eds) 2019. *Figurine Makers of Prehistoric Cyprus Settlement and Cemeteries at Souskiou* (Oxford).
- Renfrew, C. 2011. *Emergence of Civilization: The Cyclades and the Aegean in the Third Millennium BC* (London) (re-print from 1972).
- Şahoğlu, V. 2005. 'The Anatolian Trade Network and the Izmir region during the Early Bronze Age', *OJA* 24.4, 339–61.
- Şahoğlu, V. 2007. 'Çeşme-Bağlararası: a new excavation in western Anatolia', in F. Felten, W. Gauss and R. Smetana (eds), *Middle Helladic Pottery and Synchronisms: Proceedings of the International Workshop Held at Salzburg, October 31st–November 2nd 2004* (Vienna), 309–22.
- Şahoğlu, V. 2008. 'Crossing borders: Izmir region as a bridge between the east and the west during the Early Bronze Age', in C. Gillis and B. Sjöberg (eds), *Trade and Production in Premonetary Greece: Crossing Borders. Proceedings of the 7th, 8th and 9th International Workshops, Athens 1997–1999* (Sävedalen), 153–73.
- Şahoğlu, V. 2012. 'Çeşme-Bağlararası', in O. Bingöl, A. Öztan and H. Taşkıran (eds), *Dil ve Tarih Coğrafya Fakültesi 75. Yıl Armağanı Arkeoloji*



- Bölümü Tarihçesi ve Kazıları (1936–2011) (Ankara), 83–90.
- Şahoğlu, V. 2014. 'Depas and tankard vessels', in M. Lebeau (ed.), *ARCANE IR 1 – Ceramic* (Turnhout), 289–311.
- Şahoğlu, V. 2016. 'Early Bronze Age cemeteries at Bakla Tepe–İzmir: changing patterns', in E. Pernicka, S. Ünlüsoy and S. Blum (eds), *Early Bronze Age Troy: Chronology, Cultural Development and Interregional Contacts* (Bonn), 167–82.
- Şahoğlu, V. 2019. 'The Early Bronze Age Anatolian Trade Network and its role on the transformation of Anatolian and Aegean communities', in V. Şahoğlu, M. Şevketoglu and Y. Erbil (eds), *Connecting Cultures: Trade and Interconnections in the Ancient Near East from the Beginning until the End of the Roman Period* (Ankara), 115–31.
- Şahoğlu, V. in press. 'The chronology and definition of the Early Bronze Age 2 (late)–Early Bronze Age 3 (early) sequence at Liman Tepe and Bakla Tepe, İzmir', in Chr.G. Doumas, A. Giannikouri and O. Kouka (eds), *The Aegean Early Bronze Age: New Evidence, International Conference, Athens, April 11th–14th 2018* (Athens).
- Şahoğlu, V., Çayır, Ü. and Gündoğan, Ü. in press. 'Çeşme–Bağlararası: an Early Bronze Age settlement in coastal western Anatolia', in S. Vitale and T. Marketou (eds), *The Southeast Aegean/Southwest Coastal Anatolian Region (SASCAR): Material Evidence and Cultural Identity I. The Early and Middle Bronze Age* (Athens).
- Şahoğlu, V., Çayır, Ü., Gündoğan, Ü. and Tuğcu, İ. 2018. 'Çeşme–Bağlararası: Batı Anadolu sahil kesiminde bir Tunç Çağı yerleşmesi', *Anadolu / Anatolia* 44, 371–89.
- Şahoğlu, V., Vural, H. and Karaturgut, E. 2009. 'Çeşme–Boyalık Erken Tunç Çağı mezarlığı', in 26. *Araştırma Sonuçları Toplantısı*, vol. 1 (Ankara), 235–52.
- Sampson, A. 1985. *Manika: An Early Helladic Town in Chalkis* (Athens).
- Sampson, A. 1988. *Manika II: The Early Helladic Settlement and Cemetery* (Athens).
- Sapouna-Sakellarakis, E. 1987. 'New evidence from the Early Bronze Age cemetery at Manika, Chalkis', *BSA* 82, 233–64.
- Seeher, J. 2000. *Die bronzezeitliche Nekropole von Demircihöyük–Sarket: Ausgrabungen des Deutschen Archäologischen Instituts in Zusammenarbeit mit dem Museum Bursa 1990–1991* (Tübingen).
- Soles, J.S. 1992. *The Prepalatial Cemeteries at Mochlos and Gournia and the House Tombs of Bronze Age Crete* (Princeton, NJ).
- Sotirakopoulou, P. 2008. 'Akrotiri, Thera: the Late Neolithic and Early Bronze Age phases in light of recent excavations at the site', in N. Brodie, J. Doole, G. Gavalas and C. Renfrew (eds), *HORIZON: A Colloquium on the Prehistory of the Cyclades* (Cambridge), 121–34.
- Stampolidis, N.Chr. and Sotirakopoulou, P. 2007. *Aegean Waves: Artworks of the Early Cycladic Culture in the Museum of Cycladic Art at Athens* (Milan).
- Stech-Wheeler, T. 1974. 'Early Bronze Age burial customs in Western Anatolia', *AJA* 78, 415–25.
- Televantou, C.A. 2008. 'The Early Cycladic cemetery at Rivari on Melos', in N. Brodie, J. Doole, G. Gavalas and C. Renfrew (eds), *HORIZON: A Colloquium on the Prehistory of the Cyclades* (Cambridge), 209–15.
- Topbaş, A., Efe, T. and İlyaslı, A. 1998. 'Salvage excavations of the Afyon Archaeological Museum part 2: the settlement of Karaoğlu Mevkii and the Early Bronze Age cemetery of Kaklık Mevkii', *Anatolia Antiqua* 6, 21–94.
- Üyümez, M., Koçak, Ç. and İlyaslı, A. 2008. 'Afyonkarahisar / Bayat ilçesi Dede Mezarı Orta Tunç Çağı nekropolü 2006 yılı kazıları', in 29. *Kazı Sonuçları Toplantısı*, vol. 2 (Ankara), 403–16.
- Vavouranakis, G. 2011. 'Funerary customs and maritime activity in Early Bronze Age Crete', in G. Vavouranakis (ed.), *The Seascape in Aegean Prehistory* (Athens), 91–118.
- Warner, J.L. 1994. *Elmalı Karataş II: The Early Bronze Age Village of Karataş* (Bryn Mawr, PA).
- Webb, J.M. and Frankel, D. 1999. 'Characterizing the Philia facies: material culture, chronology, and the origin of the Bronze Age in Cyprus', *AJA* 103.1, 3–43.
- Yıldırım, T. 2006. 'An Early Bronze Age cemetery at Resuloğlu, near Uğurludağ, Çorum: a preliminary report of the archaeological work carried out between the years 2003–2005', *Anatolia Antiqua* 14, 1–14.
- Yıldırım, T. and Ediz, İ. 2005. '2003 yılı Resuloğlu mezarlık kazısı', in 26. *Kazı Sonuçları Toplantısı*, vol. 2 (Ankara), 193–202.
- Yıldırım, T. and Ediz, İ. 2006. '2004 yılı Resuloğlu mezarlık kazısı', in 27. *Kazı Sonuçları Toplantısı*, vol. 2 (Ankara), 57–64.
- Yıldırım, T. and Ediz, İ. 2007. '2005 yılı Resuloğlu Eski Tunç Çağı mezarlık kazısı', in 28. *Kazı Sonuçları Toplantısı*, vol. 2 (Ankara), 211–22.
- Yıldırım, T. and Ediz, İ. 2008. '2006 yılı Resuloğlu Eski Tunç Çağı mezarlık kazısı', in 29. *Kazı Sonuçları Toplantısı*, vol. 2 (Ankara), 443–54.
- Yıldırım, T. and Zimmermann, T. 2006. 'News from the Hatti heartland – the Early Bronze Age necropolis of Kalinkaya, Resuloğlu and Anatolian metalworking advances in the late 3<sup>rd</sup> millennium bc', *Antiquity* 80 (available online <[www.antiquity.ac.uk/projgall/zimmerman309/](http://www.antiquity.ac.uk/projgall/zimmerman309/)> accessed December 2023).
- Zapheiroupolou, P. 1983. 'Un cimetrie du Cycladique ancien a Epano Kouphonissi', in *Les cyclades: matériaux pour une étude de géographie historique. Table ronde réunie à l'université de dijon les 11, 12 et 13 mars 1982* (Paris), 81–7.
- Zapheiroupolou, P. 2008. 'Early Bronze Age cemeteries of the Kampos Group on Ano Kouphonissi', in N. Brodie, J. Doole, G. Gavalas and C. Renfrew (eds), *HORIZON: A Colloquium on the Prehistory of the Cyclades* (Cambridge), 183–94.
- Zimmermann, T. 2006. 'Kalinkaya – a Chalcolithic–Early Bronze Age settlement and cemetery in northern central Anatolia. First preliminary report: the burial evidence', *Anadolu Medeniyetleri Müzesi 2005 Yılı*, 271–311.
- Zimmermann, T. 2007. 'Kult und prunk im herzen Hattis – beobachtungen an frühbronzezeitlichem zeremonialgerät aus der nekropole von Kalinkaya / Toptaştepe, provinz Çorum', *Colloquium Anatolicum* 5, 213–24.

**Το νεκροταφείο της πρώιμης εποχής του Χαλκού στο Çeşme–Boyalık της παράκτιας δυτικής ανατολίας**

Οι ταφικές πρακτικές της Πρώιμης Εποχής του Χαλκού στην δυτική Ανατολία αποτέλεσαν αντικείμενο ευρείας συζήτησης, και τα στάδια εξέλιξης των παραδόσεων αυτών έχουν αποσαφηνιστεί από συναδέλφους κατά τα τελευταία χρόνια. Κατά το πρώτο ήμισυ της τρίτης χιλιετίας π.Χ. χρησιμοποιείται μεγάλη ποικιλία τάφων, όπως κιβωτιόσχημοι, πιθοταφές/εγχυτρισμοί και απλοί λάκκοι· πέραν αυτών, κατά το δεύτερο ήμισυ της χιλιετίας, επικρατούν οι πιθοταφές. Οι σύντομες, σωστικού χαρακτήρα ανασκαφές στη θέση Boyalık, της περιοχής Τσεσμέ της Επαρχίας Σμύρνης, κατέδειξαν μια νέα ταφική παράδοση στην παράκτια δυτική Ανατολία, που χρονολογείται στα μέσα της τρίτης χιλιετίας π.Χ. Στο νεκροταφείο αυτό χρησιμοποιήθηκαν, για πρώτη φορά στην περιοχή, λαξευτοί θαλαμοειδείς τάφοι. Το άρθρο παρουσιάζει τους μοναδικούς τάφους και τα ευρήματα από το νεκροταφείο στο Boyalık και αναλύει τη σπουδαιότητα αυτής της νέας ταφικής παράδοσης για την αρχαιολογία της τρίτης χιλιετίας στον ευρύτερο χώρο του Αιγαίου και της Ανατολίας.

Μετάφραση: Ουρανία Κουκά