

## Invited Article

**Cite this article:** Goswami, A., and J. Clavel (2025). Morphological evolution in a time of phenomics. *Paleobiology* **51**, 195–213. <https://doi.org/10.1017/pab.2024.35>

Received: 04 December 2023

Revised: 15 May 2024

Accepted: 06 June 2024

**Handling Editor:**

Mark Patzkowsky

**Corresponding author:**

Anjali Goswami;

Email: [a.goswami@nhm.ac.uk](mailto:a.goswami@nhm.ac.uk)

© The Author(s), 2025. Published by Cambridge University Press on behalf of Paleontological Society. This is an Open Access article, distributed under the terms of the Creative Commons Attribution licence (<http://creativecommons.org/licenses/by/4.0>), which permits unrestricted re-use, distribution and reproduction, provided the original article is properly cited.

**PALEOBIOLOGY**  
A PUBLICATION OF THE  
**Paleontological Society**

**CAMBRIDGE**  
UNIVERSITY PRESS

## Morphological evolution in a time of phenomics

Anjali Goswami<sup>1</sup>  and Julien Clavel<sup>2</sup>

<sup>1</sup>Department of Life Sciences, Natural History Museum, London, U.K.; and Department of Genetics, Evolution, and Environment, University College London, London, U.K.

<sup>2</sup>Université Claude Bernard Lyon 1, LEHNA UMR 5023, CNRS, ENTPE, F-69622, Villeurbanne, France

**Abstract**

Organismal morphology was at the core of study of biodiversity for millennia before the formalization of the concept of evolution. In the early to mid-twentieth century, a strong theoretical framework was developed for understanding both pattern and process of morphological evolution, and the 50 years since the founding of this journal capture a transformational period in the quantification of morphology and in analytical tools for estimating how morphological diversity changes through time. We are now at another inflection point in the study of morphological evolution, with the availability of vast amounts of high-resolution data sampling extant and extinct diversity allowing “omics”-scale analysis. Artificial intelligence is accelerating the pace of phenomic data acquisition even further. This new reality, in which the ability to obtain data is quickly outpacing the ability to analyze it with robust, realistic evolutionary models, brings a new set of challenges. Phylogenetic comparative methods have provided new insights into the processes generating morphological diversity, but the reliance on molecular data and resultant exclusion of fossil data from most large phylogenetic trees has well-established negative impacts on evolutionary analyses, as we demonstrate with examples of standard single-rate evolutionary models, mode- and rate-shift models, and a recently described Ornstein-Uhlenbeck climate model. Further development of methods for phylogenetic comparative analysis of high-dimensional data is needed, but existing tools can refine our understanding and expectations of morphological evolution and the generation of morphological diversity under different scenarios, as we demonstrate with analyses of placental skull evolution through the Cenozoic. Fully transitioning the study of morphological evolution into the omics era will involve the development of tools to automate the extraction of meaningful, comparable morphometric data from images, integrate fossil data into large phylogenetic trees and downstream evolutionary analyses, and generate robust models that accurately reflect the complexity of evolutionary processes and are well-suited for high-dimensional data. Combined, these advancements will solidify the emerging field of *evolutionary phenomics* and appropriately center it around the analysis of deep-time data.

**Non-technical Summary**

Organismal morphology was at the core of study of biodiversity for millennia before the formalization of the concept of evolution. In the early to mid-twentieth century, a strong theoretical framework was developed for understanding both pattern and process of morphological evolution. The 50 years since the founding of this journal capture a transformational period for the study of evolutionary morphology, in both how it is measured and how changes through time are reconstructed. We are now at another key transition point in the study of morphological evolution, with the availability of vast amounts of high-resolution data sampling living and extinct species allowing “omics”-scale analysis. Artificial intelligence is accelerating the pace of phenomic (high-dimensional, organism-wide) data collection. This new reality, in which the ability to obtain data is quickly outpacing the ability to analyze it with robust, realistic evolutionary models, brings a new set of challenges. Fully transitioning the study of morphological evolution into the omics era will involve the development of tools to automate the extraction of meaningful, comparable morphometric data from images, integrate fossil data into large phylogenetic trees and downstream evolutionary analyses, and generate models that accurately reflect the complexity of evolutionary processes and are well-suited for high-dimensional data. Combined, these advancements will solidify the emerging field of evolutionary phenomics and appropriately center it around the analysis of deep-time data.

**Introduction**

The study of morphological evolution is, in a sense, as old as biology, with pre-Darwinian attempts to classify the world—from the *scala naturae*, or Great Chain of Being, to early representations of the tree of life—being based on an intuitive sense of the hierarchy of anatomical complexity (Gontier 2011). For millennia, the study of morphology was relatively



qualitative and descriptive, although often insightful, but more quantitative approaches began appearing in the nineteenth century, with the first descriptions of phenomena such as Cope's rule (Cope 1885a,b,c), which proposed an evolutionary trend toward increased body size in lineages. Many of the key foundational concepts for the quantitative study of morphological evolution appeared during the modern synthesis of the mid-twentieth century, from adaptive landscapes to radiations (Wright 1932; Dobzhansky 1937; Simpson 1944). Since then, quantification of morphology has benefited from many transformational shifts. Computational power is one, and phylogenetics is another, allowing for explicit analysis of change along lineages. Coupled with access to seemingly limitless amounts of data, advancements in paleobiology, as well as in molecular and developmental biology, have spurred new understanding of how, when, and why morphologies evolve.

As a result of these advancements, there has been a huge increase in interest and work in the field of morphological evolution over the last few decades, with increasing numbers of publications using the term “morphological evolution” or “evolutionary morphology” year after year (Fig. 1). Many of the foundational concepts in the study of morphological evolution were laid down in a period coincident with the founding of this journal (Gould 1966, 1970, 1971, 1980; Lewontin 1966; Raup 1966; Eldredge and Gould 1972; Van Valen 1973; Pilbeam and Gould 1974; Lande 1976; Gould and Eldredge 1977; Gould and Lewontin 1979). A transition point in the study of morphological evolution can be identified around 1990, closely following the paleobiological revolution (Sepkoski and Ruse 2015) and the establishment of analytical paleobiology. Fittingly, the 1990s saw the publication of some of the most influential papers in the areas of macroevolution, disparity, and morphological evolution published (Gould 1988, 1991; Arnold 1992; Foote et al. 1992; Foote 1993a,b, 1994, 1997a,b; Wills et al. 1994; Fortey et al. 1996; Jablonski et al. 1997).

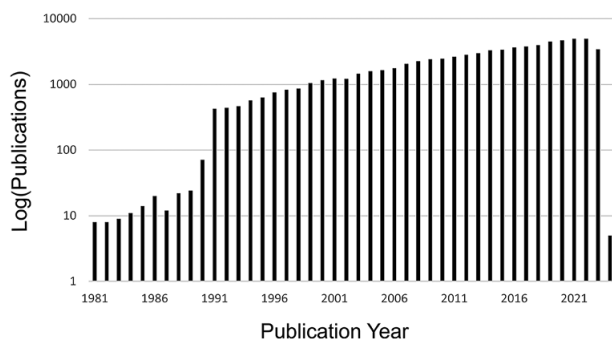
Recent years have heralded in many ways another transition point in the study of morphological evolution. The explosion of imaging tools and online databases for capturing organismal form in unprecedented detail (Houle et al. 2010; Goswami 2014; Boyer et al. 2016; Davies et al. 2017) represents a new leap forward in the study of morphology, bringing the study of phenotype firmly into the “omics” age. The integration of morphometrics and evolutionary modeling over the past few decades is now reaching a new stage of innovation, as large-scale multivariate analyses are increasingly achievable (e.g., Clavel et al. 2015; Cooney et al. 2017; Arbour et al. 2019; Price et al. 2019; Booher et al. 2021; Coombs et al. 2022; Goswami et al. 2022; Navalón et al. 2022). These innovations bring

new possibilities for improving our understanding of the evolution of organismal form and diversity, as well as broadening the availability of free tools and open data to a wider pool of global scientists (Revell 2012; Goswami 2014; Boyer et al. 2016; Rolfe et al. 2021). Here, we review major areas of interest in the study of morphological evolution, focusing on new methods and their impact on the field. We demonstrate with a worked example how better data and methods can improve our understanding of the tempo and mode of morphological evolution, both through refined modeling of complex scenarios and greater resolution in empirical analyses. In total, we present a view of a field in its prime, with *evolutionary phenomics* presenting huge potential for transforming our understanding of life on Earth in the past, present, and future.

## Quantifying Morphology

Morphology can and has been measured in numerous ways. For centuries, discrete (usually binary), meristic, and univariate traits have dominated, and in many ways still do. Discrete traits continue to be the primary morphological data for phylogenetic analysis, particularly those incorporating taxa without molecular data available, which includes nearly all extinct species (Lee and Palci 2015). Discrete and meristic data also form the primary data for much of the foundational and continuing work on morphological disparity and evolutionary tempo (Briggs et al. 1992; Foote 1992a, 1994, 1995, 1999; Wills et al. 1994; Brusatte et al. 2008; Halliday and Goswami 2016; Halliday et al. 2016; Deline and Ausich 2017; Clark et al. 2023), as they offer the benefit of being readily applicable to incomplete taxa or those with preservational deformation, as well as being better suited to taxa with variable numbers of elements or those without clear homology across structures (Briggs et al. 1992). Univariate data similarly offer numerous benefits, including being more directly comparable across disparate taxa; faster to capture, which often translates into larger sample sizes; and easier to measure, even with preservational differences, particularly for soft-bodied taxa or spirit-preserved specimens. As a result, traits like body size continue to dwarf other measures of morphological evolution (Gould 1966; Jablonski 1996; Butler and Goswami 2008; Venditti et al. 2011; Evans et al. 2012; Clavel and Morlon 2017; Benson et al. 2018; Cooney and Thomas 2021; Burin et al. 2023). Linear measurements of specific structures also offer the benefit of being more readily translatable to developmental, functional, and biomechanical properties, such as lever arms or hydrodynamics (Wainwright 2007; Cardini and Polly 2013; Price et al. 2019, 2022). Even with the explosion of omics in molecular analyses, studies linking morphological and molecular evolution on a macroevolutionary scale frequently use full genomes but only one or a handful of univariate or discrete phenotypic traits (Fondon and Garner 2004; Lartillot and Poujol 2011; Zhang et al. 2014; Levy Karin et al. 2017; Partha et al. 2017, 2019; Wu et al. 2017; Yuan et al. 2021; Christmas et al. 2023), despite the capacity to capture dense shape data with geometric approaches and its frequent usage in microevolutionary analyses, such as quantitative trait locus studies (e.g., Alexandre et al. 2015; Maga et al. 2015; Fruciano et al. 2016).

Comparison of forms via geometric differences also has a long history (Thompson 1917), but this has proliferated in recent decades with the development of geometric morphometrics (i.e., landmark- and semilandmark-based morphometrics; Gower 1975; Mardia et al. 1979; Bookstein 1986, 1991; Mardia and Dryden 1989; Rohlf and Bookstein 1990; Dryden and Mardia 1992; Adams et al. 2013; Gunz and Mitteroecker 2013; Mitteroecker



**Figure 1.** Increasing number of publications using the term “morphological evolution” or “evolutionary morphology” according to Web of Science (data downloaded on October 30, 2023). A transition point is visible around 1990, with a marked increase in use of these terms in publications after that time.

and Schaefer 2022), as well as other multivariate quantifications of shape, from outlines (Rohlf 1986; Foote 1993a; Crampton 1995; Bookstein 1997; Haines and Crampton 2000; Hopkins 2014) to surfaces (Wang et al. 2019; Kirveslahti and Mukherjee 2021). Geometric approaches offer several benefits over linear morphometrics, including explicitly capturing shape and allowing more precise identification of points of difference between specimens. However, there are also drawbacks to geometric approaches, including limitations in identifying homologous points in disparate organisms and sensitivity to registration approach (e.g., covariation induced by Procrustes superimposition; Zelditch and Swiderski 2023) and deformation (Angielczyk and Sheets 2007). There are several recent overviews of geometric morphometric approaches (Adams et al. 2013; Mitteroecker and Schaefer 2022), and so a full review is not provided here, but despite the shortcomings (and indeed, all methods have shortcomings), it is uncontroversial that the capacity to capture and compare complex shapes, particularly in three dimensions, has revolutionized the study of morphological evolution and produced novel understanding of the primary axes of variation across diverse organisms.

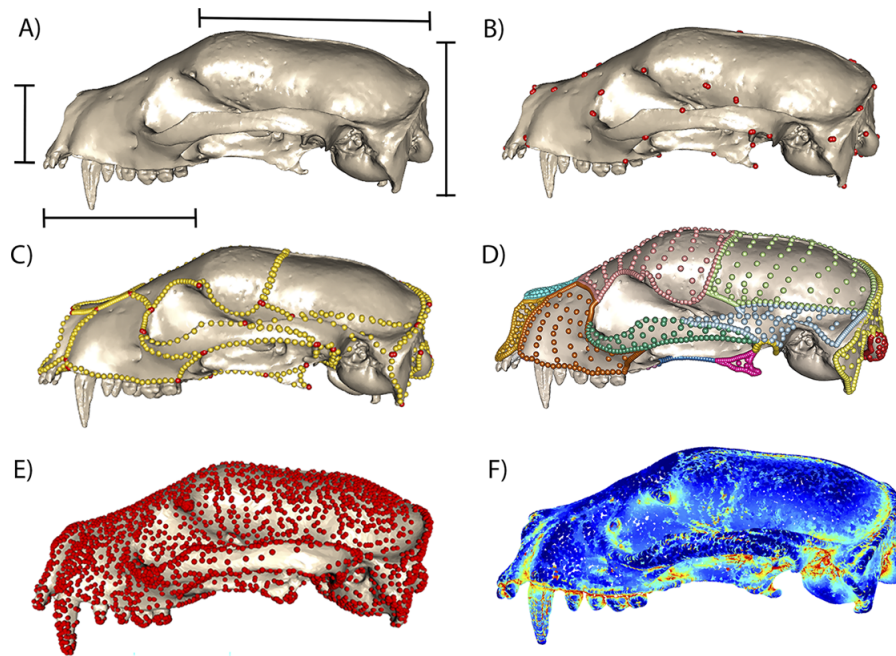
It is in this realm of 3D morphometrics that we have seen the most gains in recent years. At present, the most common approaches to studying morphology remain length measurements or small numbers of landmarks, which utilize only an infinitesimal amount of the possible data available in these images. This constraint is due largely to the time requirements and accessibility of tools for imaging, segmentation, and morphometric data collection. However, high-resolution imaging has become increasingly accessible, with photogrammetry (e.g., Falkingham 2011; Mallison and Wings 2014) and surface scanners proving low-cost options, and micro-computed tomography and even synchrotron scanning becoming more widely available. Possibly even more influential is the rapid growth of online databases for 3D images (Goswami 2014; Boyer et al. 2016; Cross 2017; Davies et al. 2017), which provides access to scans across the globe without the need to travel for primary data collection. The scale of generation of new scans has also increased with the introduction of robotic arm systems to autoloading specimens and allow for mass scanning of specimens (Rau et al. 2021). Computational power to process large numbers of images has similarly increased, with computer vision and deep learning approaches to segmentation making rapid image analysis of massive tomographic datasets entirely feasible (Lösel et al. 2020; Shu et al. 2022; Toulkeridou et al. 2023; He et al. 2024a; He et al. 2024b; Mulqueeney et al. 2024b). These advancements mean that the time constraint in quantitative analysis of evolutionary morphology will imminently shift from obtaining and processing images to collecting morphometric data from those images.

There have also been some promising forays using computer vision and deep learning analysis of images to capture established types of morphometric data, including 2D outlines and 3D volumes and surface areas (Hsiang et al. 2018) and placement of landmarks in 2D (Porto and Voje 2020) and 3D (Percival et al. 2019; Devine et al. 2020; Porto et al. 2021). The geometric morphometric applications, while promising, have been applied primarily within individual species, and it remains to be seen whether automated landmark placement can be successfully scaled up to datasets with higher levels of variation (He et al. 2024a). Moreover, the desire to fully leverage the data in high-resolution 3D images is reflected in the outpouring of new methods that sample shape more densely than the more established approaches noted earlier, for example, through surface sliding semilandmarks (Gunz and Mitteroecker 2013; Bardua et al. 2019), pseudolandmarks (Boyer et al. 2015), or

entirely landmark-free approaches. Some of the landmark-free approaches available for comparative biological analysis include generalized Procrustes surface analysis (Pomidor et al. 2016), deterministic atlas analysis in Deformetrica (Durrleman et al. 2014; Bône et al. 2018; Toussaint et al. 2021), spherical harmonics (McPeck et al. 2008; Shen et al. 2009), eigenshapes (MacLeod 1999), and topological transforms (Wang et al. 2019; Kirveslahti and Mukherjee 2021), as well as alphashapes for shape complexity (Gardiner et al. 2018). These approaches have various strengths and weaknesses, as expected (Bardua et al. 2019; Goswami et al. 2019; Marshall et al. 2019; Mulqueeney et al. 2024a), and the choice of what kind of morphometric data to use is invariably dependent on the goal of a given study and the challenges and limitations of the study system. While semilandmark approaches provide high-resolution descriptors of morphology, they can be time-consuming to implement (Bardua et al. 2019). Although there are some automated options for intraspecific analyses (Porto et al. 2021; Devine et al. 2022), as noted earlier, most implementations for analyses spanning species will require at least some manual placement of landmarks and curves, with an automated procedure to place surface semilandmarks based on the positions of the former (e.g., as in the R package Morpho; Schlager 2017). On the other hand, the ability to isolate shape changes in specific regions or to look at integration across different regions is one key factor that may argue against using methods that are not pinned to homologous points, such as pseudolandmark and other landmark-free approaches. Of course, to be biologically meaningful, all of these approaches should be applied to structures that are homologous, even if individual pseudolandmarks or control points are not, and there are undeniable benefits to the speed and detail provided by methods that do not require manual collection of morphometric data. These approaches may also benefit studies of ontogenetic and soft-tissue datasets, in which homologous points are difficult to trace even in unambiguously homologous structures (Toussaint et al. 2021; Lanzetti et al. 2022). Figure 2 demonstrates a sample of the range of morphometric approaches available, from linear morphometrics, through geometric morphometrics with landmarks and curve and surface sliding semilandmarks, and finally to two landmark-free approaches—deterministic atlas analysis and alphashapes—showing the difference in resolution of data but also the relationship to homology in each approach.

These innovations are pushing the study of phenotype fully into the omics age, in which the quality and density of morphological data are approaching that of molecular data, with resultant improvements in our ability to understand the evolution of morphology. What remains unclear is how comparable these different approaches and the results from their analyses are. A number of studies have demonstrated that analyses using, for example, relatively few landmarks versus dense landmarks differ in the phylogenetic, ecological, and allometric signals captured (Marshall et al. 2019; Wimberly et al. 2022). Others demonstrate that landmark-free approaches may capture overall shape to a similar level as geometric morphometric approaches when the elements of a structure do not substantially shift in their relationships, but can diverge markedly when there are large changes in the contributions of individual elements to the overall shape of a structure. For example, deterministic atlas analysis of mammal skulls (Fig. 2E; Mulqueeney et al. 2024a) captured the classic brachycephalic to dolichocephalic axis of mammal skull variation that linear morphometric analysis supports (Cardini and Polly 2013), but failed to capture the axes of shape variation returned with sliding semilandmarks that discriminate individual cranial elements, which have markedly different





**Figure 2.** Linear, geometric, and landmark-free morphometric approaches, demonstrated on a 3D mesh of a mammal skull, *Arctictis bintuong* (MNHN 1936-1529). **A**, Common linear measurements, which often span elements and cannot be further localized, but are faster to obtain, more easily comparable across disparate taxa, and potentially more translatable to some aspects of function. **B**, Type 1 and type 2 3D landmarks, manually placed on points of unambiguous biological homology (Rohlf and Bookstein 1990; Bookstein 1991). **C**, Sliding semilandmark curves (gold) manually placed to link landmarks (red) and defining element boundaries, which can add substantial shape information over landmarks alone (Gunz and Mitteroecker 2013; Bardua et al. 2019; Goswami et al. 2019). **D**, Surface sliding semilandmarks, here defining individual cranial elements, automatically placed using a template and based on position relative to manually placed landmarks and curves (Gunz and Mitteroecker 2013; Bardua et al. 2019). **E**, Deterministic atlas analysis, which uses control points (red) to represent points of high variation across a sample and quantifies deformations from the mean shape as momenta from a flow field (Durrleman et al. 2014; Bône et al. 2018; Toussaint et al. 2021). **F**, Alphashapes, which measure a shape's complexity as the level of refinement needed to match an original shape (Gardiner et al. 2018).

contributions to overall skull shape in different clades (Goswami et al. 2022, 2023). We fully expect that these approaches will continue to develop and proliferate with the expansion of interest, data, and automated tools, allowing for unprecedented detail in the analysis of evolutionary morphology and the formalization of the field of evolutionary phenomics.

### Morphospaces and Morphological Diversity

Macroscale study of diversity has long been the domain of species numbers, for many reasons. Uncertainty about what qualifies as a species notwithstanding (Zachos 2016), taxonomic diversity is easier to measure, particularly across different organisms (Sepkoski et al. 1981; Benton 1995; Benson et al. 2021). Yet, there is an inherent appreciation that evolution is not just a matter of numbers but also of kinds or varieties (Thomas and Reif 1993). A clade with a large number of fairly similar species has likely experienced a very different evolutionary history than a clade with a small number of highly dissimilar species. Moreover, morphology reflects numerous aspects of an organism's biology, and thus morphological diversity provides novel understanding of ecological, physiological, and developmental diversity and of organism–environment interactions, among many other important topics. As such, the study of morphological diversity, or disparity, is one that has reshaped the study of morphological evolution, particularly during the pivotal period of the 1990s that saw an explosion of macroevolutionary studies of morphology. The continuing interest in disparity stems from its broad relevance; quantifying the distribution of morphological variation in the past and present informs numerous topics, from key innovations to developmental and functional constraints to extinction selectivity and response

(Briggs et al. 1992; Wills et al. 1994; Jernvall et al. 1996; Foote 1997a; Eble 2000; Hopkins 2014; Hughes et al. 2015; Goswami et al. 2016; Halliday and Goswami 2016; Benson et al. 2018; Puttick et al. 2020; Dickson et al. 2021; Burin et al. 2023; Clark et al. 2023; Wang and Zhou 2023). Analysis of disparity, particularly using variance-based metrics (Foote 1997a), may also be less susceptible to sampling bias than is taxonomic diversity, and thus may be better suited for accurate representation of patterns in deep time, which inevitably sample only a fraction of past life (Foote 1993a,b, 1996, 1997a,b). As with quantification of morphology, there are many approaches to quantification of disparity, all of which have pros and cons that have been recently reviewed (Guillerme et al. 2020a,b).

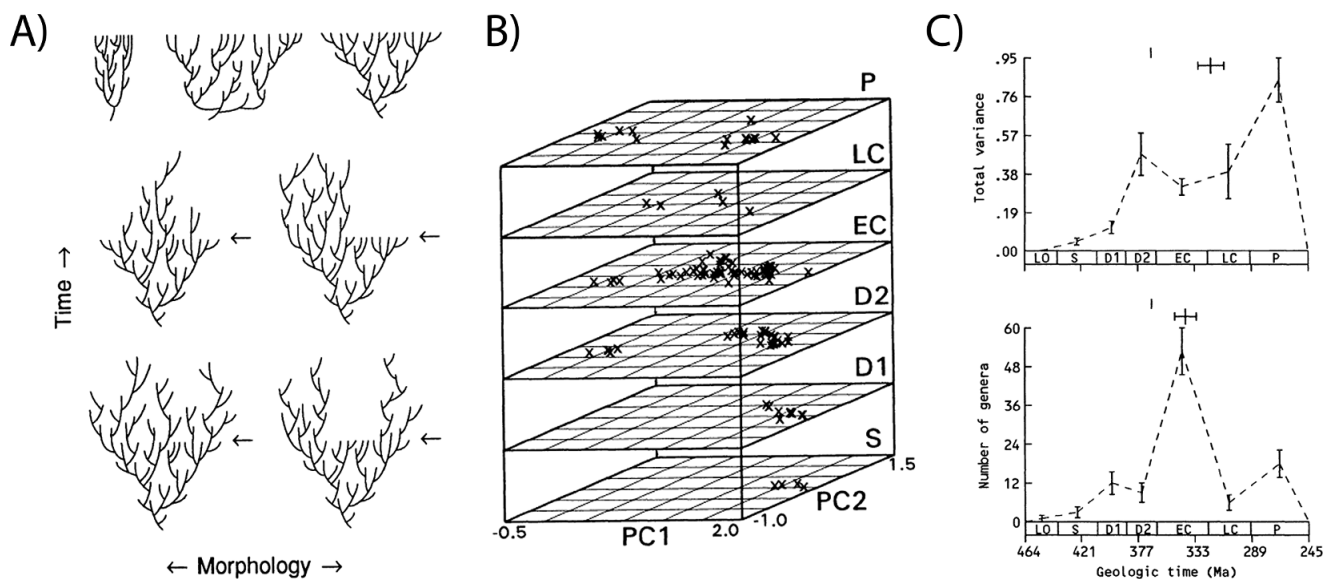
Most studies of morphological disparity begin with a morphospace. Morphospaces have long been used to represent variation in biological form, both realized and theoretical. As such, they are useful for many topics of interest, from identifying physical mechanisms of (and constraints on) shape formation (Raup 1966; Chirat et al. 2013; McGhee 2015; Gerber 2017) to identifying gaps in observed morphologies to quantifying shifts in organismal variation through time (Foote 1994, 1995; Holliday and Stepan 2004; Wesley-Hunt 2005; Halliday and Goswami 2016) to estimating adaptive landscapes (McGhee 2006; Chartier et al. 2014; Dickson et al. 2021; Jones et al. 2021). Morphospaces can be constructed from just a few traits or can use dimensionality reduction approaches such as principal components analysis (PCA) to synthesize vast numbers of traits into a much smaller number of primary axes of variation, which can then be meaningfully interrogated and understood. Morphospaces are now common in quantitative studies of morphology, but they have important limitations that depend both on the type of data being input and the use of the morphospace for further analysis (Mitteroecker and Huttegger 2009; Polly and Motz 2016; Gerber 2017; Polly 2023).

Thus, it is critical to carefully consider whether input data are appropriate for visualization or further analysis using a morphospace approach. For example, traits that are not independent or that lack a common scale or scale relationship can create patterns that are not biologically meaningful (Mitteroecker and Huttegger 2009). However, for most studies of evolutionary morphology, a morphospace will be the first port of call and often provides unexpected insights into macroevolutionary patterns, particularly for understudied clades.

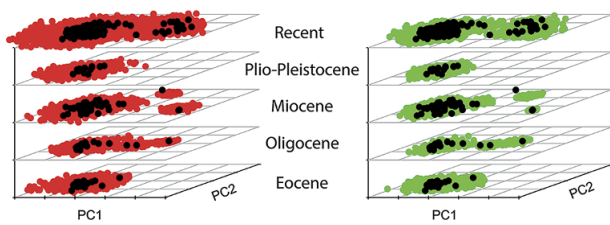
While examples of morphospaces in evolutionary studies abound, the most famous is undeniably Raup's (1966) shell coiling morphospace, which used four parameters to define a theoretical morphospace for all shelled invertebrates and plotted their empirical (largely estimated) distributions within it. Its influence endures because it is generally recognized to be both the first explicit use of this approach to understand the distribution of organismal form and the first interrogation of the factors underlying that distribution. As such, its impact stretches from evo-devo to paleobiology (Mitteroecker and Huttegger 2009; Gerber 2017; Polly 2023). Equally influential, however, are the iconic stacked morphospaces from Foote's series of studies in the 1990s, which used discrete trait data to quantify and track changes in morphological variation through time in various clades of marine invertebrates (Foote 1993b, 1994, 1995, 1999). These morphospaces, and the associated disparity metrics, provided new perspective on the evolution of morphological diversity and for understanding how its relationship with taxonomic diversity provides novel insights into evolutionary processes (Foote 1992b, 1993a, b, 1997b). High taxonomic diversity but low morphological diversity is suggestive of a constraint or radiation driven by isolation or habitat contraction (Fig. 3A, top left), whereas high morphological diversity with low taxonomic diversity suggests an early burst of morphological evolution (Fig. 3A, top center), compared with unhindered, trend-free morphological diversification in line with taxonomic diversification (Fig. 3A, top right). Shifts in disparity and morphospace occupation that result in decreases in morphological diversity later in clade evolution (as indicated in the bottom two rows of Fig. 3A and in 3B,C) also provide insight into whether and how

evolutionary processes are selective or not selective. For example, Foote's analysis of blastoids (Foote 1993b) demonstrates diffusion through morphospace (Fig. 3B) and matched increases in taxonomic and morphological diversity early in clade evolution (Fig. 3C). Later declines in taxonomic diversity are not accompanied by reductions in disparity, suggesting that taxonomic extinctions were nonselective for morphology (Foote 1993b).

The expected amount of disparity in a clade is intimately linked to the evolutionary process, which involves both the diversification dynamic, such as the rate of turnover in lineages, and how traits have evolved in lineages. This interplay can complicate interpretation of patterns of disparity, as a homogeneous process of trait evolution can show changes in disparity through time that reflect solely the effects of speciation and extinction events (i.e., the branching pattern in a tree; see, for instance, O'Meara et al. 2006; fig. 2). One way to capture this aspect is to focus on the contributions of subclades to overall disparity (Foote 1993a, 1997b). While it is possible to assess this aspect without a resolved phylogenetic tree (Foote 1993a), this is more robustly accomplished with methods quantifying disparity through time using an explicitly phylogenetic framework. The most commonly applied approach at present is subclade disparity (Harmon et al. 2003) as implemented in the R package *geiger* (Harmon et al. 2008; Slater and Harmon 2013), which measures how the partitioning of morphological variation has changed through a clade's evolution. Phylogeny-based approaches also allow the benefit of point estimates of disparity, rather than binning taxa into coarse time intervals, which may introduce additional biases into analyses (Guillerme and Cooper 2018). Another benefit of a phylogenetic framework is that also allows for ancestral-state estimation at internal nodes (Halliday and Goswami 2016) and comparisons with expectations under different evolutionary models (Harmon et al. 2003; Slater et al. 2010; Slater and Harmon 2013). For example, using a recently published morphometric dataset of placental mammal skulls (Goswami et al. 2022), we plotted first the empirical data (322 species spanning the Eocene to Recent; black dots in Fig. 4) using a stacked PCA binned by Cenozoic epochs. We then ran 100 simulations estimating disparity using a



**Figure 3.** The relationship between morphological and taxonomic diversity provides insight into evolutionary processes, as described in Foote (1993b). **A**, Foote 1993b: fig. 1: Idealized diversity histories of a clade under different scenarios of diversification (top row) and decline (middle and bottom row). **B**, Foote 1993b: fig. 2: Stacked morphospaces showing shifts in blastoid morphology through the Paleozoic. **C**, Foote 1993b: fig. 3: showing concordant early increases and discordant later declines in disparity (top) and taxonomic diversity (bottom). Figure reproduced from Foote (1993b).



**Figure 4.** Stacked principal component analyses (PCAs) showing empirical (black dots) and simulated disparity through Cenozoic epochs for a sample of placental mammal skulls (Goswami et al. 2022). Left: simulations ( $n = 100$ ) of a single-rate Brownian motion (BM) model (red dots). Right: simulations ( $n = 100$ ) with a variable-rate BM model with lambda tree transformation (green dots).

Brownian motion (BM) model and a dated phylogeny for the sample and binned these into the same time bins (red dots in Fig. 4, left). While the empirical and simulated data are largely similar, it is apparent that the empirical data have not diffused through morphospace as a strict BM model would estimate. Rather, placental mammals have stayed largely constrained into a single region of morphospace, with the exception of a distinct “whale” space, suggesting that convergence (or constraint) has dominated placental mammal evolution (Goswami et al. 2022). As discussed and demonstrated further later in this paper, although most simulations of disparity expectations rely on a simple BM model (Harmon et al. 2003; Slater et al. 2010), more complex models can also be applied, as in Figure 4 (right, green dots), in which disparity was instead simulated using a variable-rate BM model with a lambda tree transformation, estimated from analysis in BayesTraits v. 3 (Venditti et al. 2011; Goswami et al. 2022). From these brief introductory examples, it is clear that analysis of disparity is one of many areas that has been transformed by the development of phylogenetic comparative methods (PCMs).

### Enter Phylogeny and the Rise of PCMs

Ever since Darwin sketched the first explicitly evolutionary tree (Darwin 1859), reconstructing the relationships among organisms has been a primary concern for biologists. While morphological data had been the cornerstone of phylogenetic analysis for decades (Hennig 1965), the advent of molecular phylogenetics saw a rapid increase in the number and stability of evolutionary trees for extant taxa, while overturning some long-held hypotheses of relationships among even well-studied clades. As evolutionary trees became more available, it became increasingly possible to incorporate understanding of relationships into estimation of evolutionary patterns and processes. Incorporating phylogeny into comparative analyses is particularly critical for the study of morphology, because it is well understood that organisms share evolutionary history and thus cannot be treated as wholly independent data points in a statistical analysis (Felsenstein 1985).

The past two decades have seen a surge in the development of PCMs dedicated to the study of morphological evolution. These methods are increasingly applied to reconstructing trait evolution, including that of complex shapes, and identifying the factors underlying their evolution across short to large timescales. There are several recent reviews of this topic (Hernández et al. 2013; Pennell and Harmon 2013; Garamszegi 2014; Goolsby 2015; Cooper et al. 2016; Cornwell and Nakagawa 2017; Adams and Collyer 2018, 2019; Uyeda et al. 2018; Clavel and Morlon 2020; Harmon et al. 2021; Soul and Wright 2021), and thus we focus here on a key

aspects: incorporation of fossil data and extension to multivariate data and to more complex evolutionary models.

### Fossils Are Critical for Accurate Estimation of Evolution

The molecular revolution, the increasing availability of robust, dated phylogenies for many clades, and the development of phylogenetic comparative approaches have fostered the studies of morphological evolution and macroevolution in general over the past few decades. However, one negative side effect of the explosion of molecular phylogenetics is the reduced use of morphological data in large-scale phylogenetic analyses. This in turn has hindered incorporation of fossils into large evolutionary trees and prevented the widespread integration of fossil data in phylogenetic comparative studies, despite recognized benefits (Slater and Harmon 2013). There has been substantial progress in dating fossil and mixed extant and fossil cladograms (Stadler 2010; Bapst 2013; Luo et al. 2020) and incorporating fossil taxa using morphological information along with molecular data using “total evidence” approaches (Pyron 2011, 2017; Ronquist et al. 2012; Álvarez-Carretero et al. 2019), as well as the recently developed “metatree” approach (Lloyd and Slater 2021). Morphometric data may also assist with resolving these issues, with development of new approaches to estimating divergences using both molecular and morphometric data, while accounting for population-level variance and trait covariances (Álvarez-Carretero et al. 2019). There are also established approaches for incorporating partial information from fossils into phylogenetic comparative studies (Slater et al. 2012a,b). Nonetheless, there are still significant barriers to generating phylogenetic trees that include fossils at the same scale as those for extant taxa, including continuing conflict between molecular and morphological (extant and fossil) trees in both topology and divergence estimation (Foley et al. 2016; Sauquet and Magallón 2018; Lyson and Bever 2020), and much work needs to be done to integrate fossils into large phylogenetic trees and downstream analyses. Fortunately, most PCMs are known to be relatively robust to unresolved trees (Martins 1996; Martins and Housworth 2002; Stone 2011), and extensions to a general time-variable model allow for analysis of trends in continuous character evolution without a fully resolved phylogeny (Hunt 2006, 2007b; Finarelli and Goswami 2013; Raj Pant et al. 2014).

It is crucial that these barriers to the inclusion of fossils are overcome, because there is extensive evidence that fossil data are critical for accurate analysis of macroevolutionary patterns (Slater et al. 2012a; Finarelli and Goswami 2013; Slater and Harmon 2013; Raj Pant et al. 2014), for many reasons. Fossils provide unique factual observations in analyses, in contrast to reconstructed states, which typically cannot, for example, estimate states outside the sampled (i.e., extant) range, although we know that trait distributions change markedly through a clade’s history (Finarelli and Goswami 2013; Raj Pant et al. 2014). The impact of these effects is seen in analysis of evolutionary trends, such as Cope-Depéret’s rule of body-size increases over time (Finarelli and Goswami 2013; Bokma et al. 2016; Benson et al. 2018). In fact, identifying a trended BM model requires fossil data. Not only does the incorporation of fossils help in assessing evolutionary processes, but it also allows improved estimation of parameters (Ané 2008; Slater et al. 2012a; Ho and Ané 2014a), specifically by constraining their estimation (reduced variation around parameters) compared with studies on extant-only datasets (Finarelli and Goswami 2013). For instance, the ancestral-state estimate in a BM process (although it is



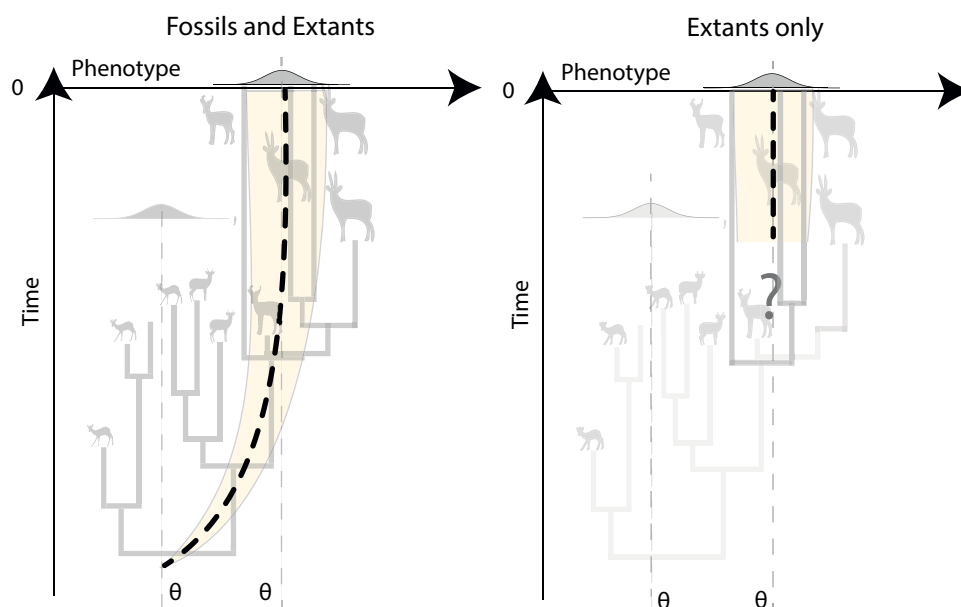
unbiased) is said to not be consistent because it is not improved by increasing the sample size (i.e., the variance around the parameter estimate is not reduced with infinitely large phylogenies of extant taxa). Instead, only the incorporation of fossil data improves ancestral-state estimates and detection of shifts in traits (Ané 2008). Similarly, in an Ornstein-Uhlenbeck (OU) process, a modified random walk in which a trait evolves toward an optimum value, estimating the primary optimum value and the ancestral state is possible only with fossils (Ho and Ané 2013, 2014a; Fig. 5). The ability to detect time-dependent models, in which the rate changes as a function of time—such as in an early burst model, in which rate decreases through time, as is hypothesized for adaptive radiations, or an accelerated change (AC) model, in which rates increase exponentially through time (Blomberg et al. 2003)—may also be severely affected by exclusion of fossils (Slater et al. 2012a).

Fossil data not only assist in estimating and constraining the parameters of evolutionary models, but they are also critical for distinguishing different processes. For example, consider the OU process and the AC models mentioned earlier. The expected covariance matrices for both of these models are proportional on ultrametric trees (trees in which all tips are equidistant from the root, as in extant-only trees; Uyeda et al. 2015). Because of that, they have identical likelihoods and thus cannot be distinguished. However, they can be distinguished on non-ultrametric trees (i.e., trees that include fossils; Slater et al. 2012a). Similarly, changes in evolutionary dynamics (e.g., shifts from constrained evolution to radiation, such as after an extinction event), are also largely identifiable only with trees incorporating fossils (Slater and Harmon 2013; Clavel et al. 2015). For example, we can simulate an ecological release model (or the related, but slightly more complex release-and-radiate model), in which a clade is governed by an OU process due to some extrinsic constraint such as competition until a shift point, after which a BM model dominates (Fig. 6). This model was applied by Slater (2013) to mammalian body-size evolution before and after the end-Cretaceous mass extinction, to test the hypothesis that non-avian dinosaurs constrained body-size evolution in mammals before the dinosaur extinction. In our simulations (Fig. 6), we observe that the log-

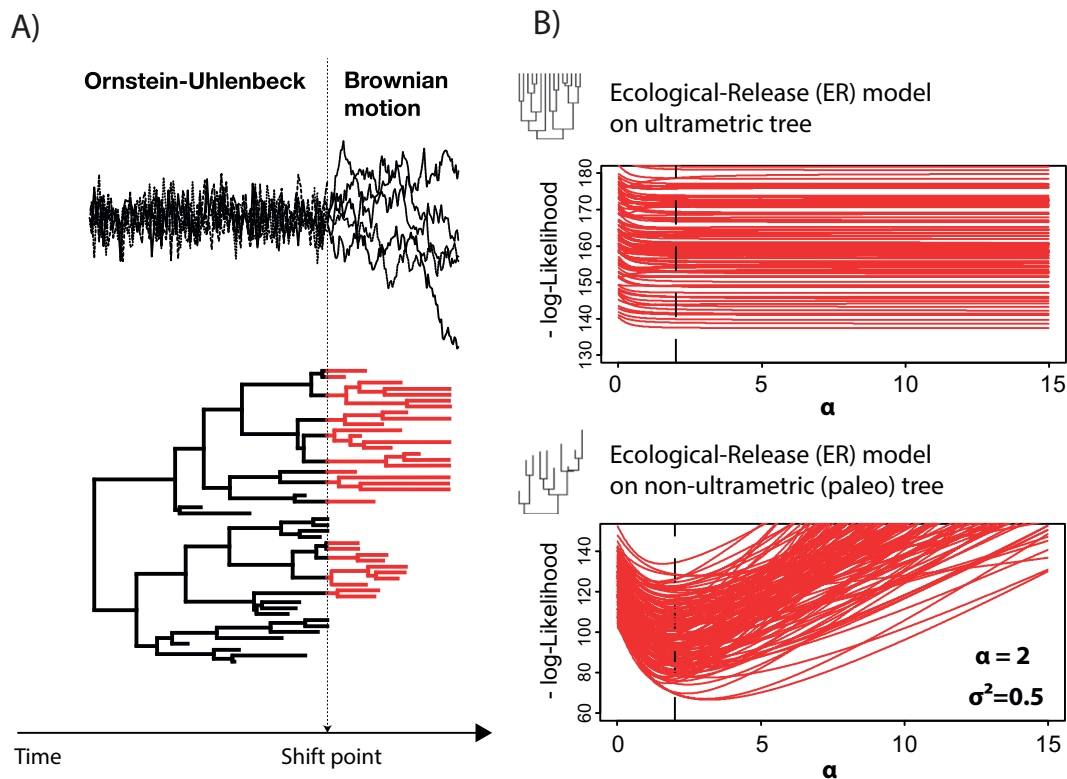
likelihood profile is almost flat around the simulated value ( $\alpha = 2$ , dashed line in Fig. 6B) of the OU process for all simulated datasets when an ultrametric tree (extant only) is used. This indicates that with comparative datasets made only of extant species, such a scenario cannot be retrieved. In contrast, with non-ultrametric (fossil + extant) trees, the (negative) log-likelihood profile shows an optimum around the simulated value, allowing recovery of the shift in processes through the evolutionary history of the clade.

As shifts in evolutionary dynamics are often driven by extrinsic events, such as mass extinctions or global warming/cooling, these examples and simulations demonstrate that fossil data will be critical for understanding how species respond to changes in their environments. Nonetheless, while the importance of including fossils into macroevolutionary analyses is clear, the challenge of doing so may appear daunting given the issues noted earlier with producing comprehensive phylogenetic trees, as well as well-known issues with sampling and preservation of fossil material, especially for 3D morphometric studies. There is hope here as well, though, as previous studies have shown that the incorporation of even a small proportion of fossil data into comparative studies is sufficient to differentiate competing evolutionary scenarios (Slater et al. 2012a; Clavel et al. 2015; Uyeda et al. 2015). We demonstrate this effect here with simulations of a modified OU process that introduces a powerful new approach to modeling factors that may influence morphological evolution through deep time.

Some of our recent work has focused on explicitly considering variation in extrinsic factors, such as temperature or precipitation, into models of morphological evolution by allowing parameters to track the extrinsic factor as it changes through time (Clavel and Morlon 2017; Brinkworth 2019). This approach has previously been described for a BM model in which the evolutionary rate is not constant and instead is dependent upon a continuous climatic variable (Clavel and Morlon 2017). The relationship between evolutionary rate and the climatic variable (which can be any variety of extrinsic factors) could be linear or exponential, or indeed could better relate to a derivative of the factor (i.e., tracking change or rate of change, rather than a raw value). Here, we describe an extension



**Figure 5.** Inference of Ornstein-Uhlenbeck (OU) processes using trees with both fossil and extant species (non-ultrametric trees) vs. trees with extant species only (ultrametric trees). Inference based on extant species only will miss evolutionary trends (e.g., Cope's rule or Depéret's rule) from the ancestral phenotype to the primary optimum value. This can lead to inaccurate estimation of ancestral states, incorrect reconstruction of evolutionary dynamics, and thus spurious interpretations.



**Figure 6.** Identifiability of processes changes with fossil data. In **A**, we depict a release-and-radiate model (Slater 2013; Clavel et al. 2015), in which phenotypic evolution is modeled as an Ornstein-Uhlenbeck (OU) process representing constrained evolution up to a shift point, after which it switches to a Brownian motion (BM) process (radiating phase). This model was used to test whether the mammals experienced an increase in body-size diversity after the Cretaceous/Paleogene extinction (Slater 2013). In **B**, we show the log-likelihood profile from the ecological release model simulations (100 datasets) when fit with ultrametric trees (top; extant only) and non-ultrametric (bottom; fossil + extant species) trees. Figure adapted from Clavel et al. (2015).

of this climatic model wherein the model of trait evolution corresponds instead to a generalized OU process (also called Hull-White model) of the form  $dX(t) = \alpha[\theta(t) - X(t)]dt + \sigma dB(t)$ , where  $\alpha$  controls the strength of selection toward a moving optimum  $\theta(t)$ , and  $\sigma$  controls the generation of random fluctuations (as applied in Troyer et al. 2022). The optimum in this climatic-OU simulation changes through time according to the following linear equation:  $\theta(t) = \theta_0 + \beta \times T(t)$ , where  $\theta_0$  is the optimum at the root of tree,  $T(t)$  is a climatic function, for instance, the temperature curve estimated from benthic foraminifera oxygen isotopes (e.g., Cramer et al. 2011; Westerhold et al. 2020; as applied in Troyer et al. 2022); and  $\beta$  is the parameter controlling the relationship and the effect of the climate/environment on the optimum trajectory (Brinkworth 2019). Note that when  $\beta = 0$ , this model reduces to a classical OU process with a fixed optimum.

In the simulations displayed in Figure 7, the climatic OU process was simulated on birth–death trees subsampled to 164 species with various proportions of fossils (from 0%, i.e., only extant species, to 50% fossils). The tree height was scaled to 60 Ma before simulating the trait process to represent an optimum chasing climate change over a major part of the Cenozoic period. On each tree, the traits were simulated with combinations of increased strength of selection ( $\alpha = [0.006, 0.012, 0.035, 0.056, 0.116]$  corresponding to various phylogenetic half-lives (from 0.5 to 10, represented by line opacity in the plot) and varying strengths of association with the temperature curve, from negative to positive ( $\beta = [-5, -1, 0, 1, 5]$ ). Our results show the proportion of time the climatic-OU process was favored over alternative processes (BM, OU, early burst (EB), trended BM, and climatic-BM) according to the corrected Akaike information criterion (AICc). As expected, with  $\beta = 0$ , we see that

the OU and climatic-OU share the model support (~50%). In the other simulations, we observe increased support for the climatic-OU model with both increased effects ( $\beta = -5$  or  $\beta = 5$ ) and strength of the  $\alpha$  parameter. Importantly, for the largest effects, only 5% of fossils in the tree were sufficient for detecting the climatic-OU process. In stark contrast, when the analyses are conducted on extant species only, the climatic-OU is never recovered as the best-fitting model. This is evident in the solution (the expected value, or optimum, for each lineage in the tree) to this generalized OU given by the following equation:

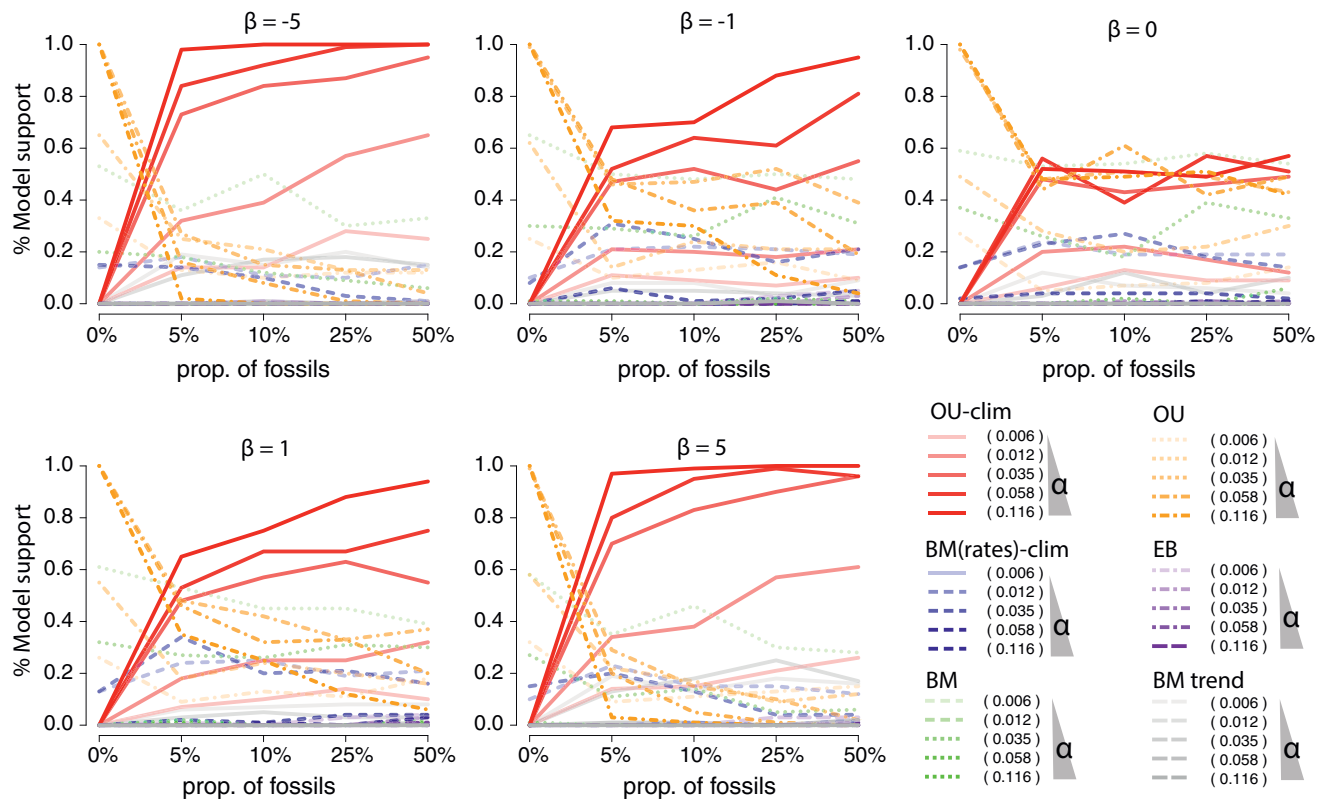
$$E[X(t)] = \theta_0 e^{-\alpha t} + \int_0^t \alpha e^{\alpha(s-t)} [\theta_0 + \beta T(s)] ds \quad (1)$$

The integral on the right part of this equation is going from 0 (the root) to  $t$  (the tip value) and shows that when species are all contemporary, the changes in the optimum (expected value) through time will not be identifiable. This example thus definitively illustrates the need to incorporate even a small number of fossils in comparative studies to identify complex evolutionary scenarios, including those of particular relevance to the current environmental crisis.

### Big Phenomes, Big Analytical Headaches

As detailed earlier, there have been numerous advances in the collection of 3D images and in collecting dense morphometric data from specimens, catapulting the study of morphological evolution fully into the omics arena. However, as evidenced by many recent studies of body-size evolution, and all of the examples presented earlier, the vast majority of work modeling morphological





**Figure 7.** Simulations showing the power to detect the climatic-Ornstein-Uhlenbeck (OU) process (Troyer et al. 2022) with various proportions of fossils included in simulated trees. The climatic-OU process was simulated on birth–death trees subsampled to 164 species with various proportions of fossils (from 0%, i.e., only extant species, to 50% of fossils). On each tree, the traits were simulated with combinations of increased strength of selection ( $\alpha = [0.006, 0.012, 0.035, 0.058, 0.116]$ ) corresponding to various phylogenetic half-lives from 0.5 to 10) represented by lines' opacity in the plot, and varying strengths of association with the temperature curve, from negative to positive ( $\beta = [-5, -1, 0, 1, 5]$ ), represented in the separate insets. The plot shows the proportion of time the climatic-OU process was favored over alternative processes according to the corrected Akaike information criterion (AICc) across 100 simulated datasets for each parameter combinations.

evolution has focused on univariate data. Some approaches to rectify the methodological discordance between multivariate data and univariate methods include reducing multivariate data to individual principal components (PCs), but this is problematic if only one or a few principal components are analysed (Uyeda et al. 2015; Clavel and Morlon 2020). Methods are increasingly being developed that are suited to multivariate data (Revell and Collar 2009; Bartoszek et al. 2012; Clavel et al. 2015; Caetano and Harmon 2017; Goolsby et al. 2017; Bastide et al. 2018), as well as extensions of conventional multivariate statistical approaches to account for phylogenetic relatedness (Revell and Harrison 2008; Revell 2009; Clavel and Morlon 2020). Applying these methods to multivariate data, however, does bring challenges. Morphometric datasets using 2D and 3D landmarks are often described as high-dimensional, because the number of descriptors (coordinates)  $p$  is often greater than the number of individual observations  $n$ . Most conventional multivariate statistical approaches, such as multivariate regressions and multivariate analyses of variance (MANOVAs), suffer from low statistical performances when  $p$  approaches  $n$ , or cannot be used at all when  $p > n$ . Geometric morphometric datasets bring additional challenges, because the steps of the Procrustes superimposition (rotation, translations, and scaling) used to align specimens to a common conformation lead to the loss of several dimensions (four for 2D and seven for 3D data; Rohlf 1999) irrespective of the number of variables. For these reasons, dimensionality of the shape space (or tangent space) is often either reduced to a handful of PCs that are used in downstream analyses, or the complete set of coordinates is analyzed using simpler

statistics (e.g., the Procrustes analysis of variance [ANOVA] of Goodall [1991], which assumes that the variance is isotropic and identical at each landmark).

Multivariate PCMs, including evolutionary model-fitting procedures, also suffer from high dimensionality, because the traditionally used likelihood techniques are not applicable (Clavel et al. 2015). Moreover, the use of data-reduction techniques, such as PCA, may lead to biased estimates and affect model comparison or statistical tests in PCMs (Uyeda et al. 2015; Clavel and Morlon 2020), as well as biasing analyses of datasets containing autocorrelations (Bookstein 2012). Phylogenetic PCA (Revell 2009; Polly et al. 2013) can rescue these issues but is essentially limited to the Brownian motion process at present. In recent years, there have been several attempts at developing model-fitting approaches and statistics that are directly applicable to these high-dimensional comparative datasets using different strategies (Adams 2014a,b; Goolsby 2016; Adams and Collyer 2018; Tolkoff et al. 2018; Clavel et al. 2019; Clavel and Morlon 2020; Hassler et al. 2022). For instance, “distance”-based techniques were proposed to circumvent the constraints of the huge covariance matrices used in likelihood-based approaches (Adams 2014a,b; Adams and Collyer 2018). However, as in related techniques such as the permutational multivariate analysis of variance (PERMANOVA) used in ecology or the Procrustes ANOVA discussed earlier (Goodall 1991; Anderson 2001), distance-based PCMs ignore the covariances in multivariate datasets when computing their statistics and are limited to Brownian motion. In consequence, these approaches are highly sensitive to departure from these assumptions (Warton et al. 2012; Clavel

and Morlon 2020). The pseudo-likelihood technique proposed by Goolsby (2016), or more precisely the pairwise composite likelihood (PCL), allows for extension beyond classical Brownian motion process by offering a likelihood-based technique to infer parameters and compare alternative evolutionary models. PCL is efficient and fast (Goolsby 2016; Clavel et al. 2019), but it is not invariant to rotation and is thus not applicable to geometric morphometric datasets because of the arbitrary orientation of the baseline shape (Rohlf 1999; Adams and Collyer 2018). Penalized-likelihood (PL) techniques also allow estimating and fitting alternative models and can alleviate issues related to rotation invariance (Clavel et al. 2019; Clavel and Morlon 2020). These approaches show performances comparable to the PCL for estimating parameters and outperform conventionally used data-reduction techniques or distance-based approaches, but they are computationally costly and may not scale easily to datasets composed of more than 2000–4000 dimensions (a common situation with the use of sliding semi-landmarks or pseudolandmarks in 3D geometric morphometrics). In asymptotic conditions (when  $n \gg p$ ), the PL approach reduces to the classical likelihood techniques. Recently, Bartoszek et al. (2023) showed that better-defined algorithms and use of appropriate corrections after data transformations (e.g., rotation of the data) can be used to circumvent some issues linked with working with large multivariate datasets. However, these recommendations do not necessarily apply to the specific case of geometric morphometric data, because there is no reference orientation one can use to devise a correction term.

Phylogenetic factor analysis was also recently proposed as an efficient way to model complex high-dimensional datasets using a handful of latent factors (Tolkoﬀ et al. 2018; Hassler et al. 2022). This technique uses a promising probabilistic framework for data reduction; however, it is also currently limited to Brownian motion and might suffer from rotation-invariance issues such as those faced by classical factor analysis. These methods are in ongoing development to address these issues. For instance, several algorithms have been proposed to improve and speed up the computation of multivariate likelihood in PCMs (Pybus et al. 2012; Ho and Ané 2014b; Clavel et al. 2015; Goolsby et al. 2017; Bastide et al. 2018; Caetano and Harmon 2019; Mitov et al. 2020), and further techniques (e.g., machine learning approaches) might be envisioned to study high-dimensional datasets, such as geometric morphometric datasets, with the various constraints, such as rotation invariance, accompanying these datasets.

Another key aspect to consider is the trade-off between the morphological complexity captured by modern morphometrics and the number of parameters that must be estimated by the models to improve biological realism and interpretability. To avoid overfitting and difficulties in optimizing parameter-rich models, most developments for high-dimensional comparative datasets mentioned earlier are based on simpler assumptions—for instance, that multivariate OU has a simple structure with same parameter shared across traits, sometimes called the “scalar OU model” (Bastide et al. 2018; Clavel et al. 2019)—than state of the art multivariate models. While some maximum-likelihood implementations allow the estimation of rates or adaptive optimum in different lineages or clades across traits in multivariate datasets (Revell and Collar 2009; Bartoszek et al. 2012; Clavel et al. 2015; Caetano and Harmon 2017), these approaches usually require that the parts of the tree where the shift occurred be known a priori (mapped) or for those areas of the tree to be reconstructed independently. More recently, maximum-likelihood and PL implementations have been proposed that can detect the position of these shifts automatically in multivariate

datasets (Khabbazian et al. 2016; Bastide et al. 2018). Similarly, some Bayesian implementations using reversible jumps with Markov chain Monte Carlo algorithms (RJMCMC; e.g., in RevBayes [Höhna et al. 2016] and BayesTraits [Venditti et al. 2011]) relax these assumptions by allowing the estimation of rates changes in different parts of the tree without any prior knowledge on the position of the shifts. As a prior on the number of shifts is, however, usually needed, these methods are based on the Occam’s razor principle that a limited number of changes are needed to model the data. A model with branch-specific trait changes has previously been developed (Lemey et al. 2010), but has not—to the best of our knowledge—been applied to morphometric datasets. Although these RJMCMC approaches are more flexible, it should be noted that to cope with the rapid increase in number of parameters, all of these approaches also make some simplifying assumptions—just as with the methods for high-dimensional datasets described previously—compared with the full models employed in “mapped trees” methods. For instance, none of these approaches can be employed on high-dimensional datasets without relying on some sort of data-reduction techniques; they either assume that traits evolved independently of each other (Khabbazian et al. 2016) or that the evolutionary correlations between traits are homogeneous across the tree (Lemey et al. 2010; Venditti et al. 2011; Höhna et al. 2016; Bastide et al. 2018) and that rate changes are shared across traits.

Future developments will have to overcome these various challenges imposed by parameter-rich models and high dimensionality of modern datasets, because at present, our ability to generate high-quality, phenomic-scale data, as discussed earlier, is outpacing the capacity of evolutionary analyses, most of which rely on relatively simple models of evolution or are only suited to univariate or low-dimensional data. Nonetheless, even with existing methods, we already have the means to assess the processes underlying observed patterns with more complexity and accuracy than is usually applied, as we demonstrate by returning to the topic of disparity.

### Expectations of Disparity under Alternative Evolutionary Models

It is intuitive that there is a close relationship between morphological disparity and the evolutionary processes unfolding along a tree or a time series. Hunt (2012) showed that the rate of phenotypic evolution in time-series data necessarily depends on the generating process. Relatedly, O’Meara et al. (2006) showed that the expected disparity under a homogeneous Brownian motion can depend on the dynamics of speciation and extinction, that is, the branching pattern or shape of the tree, as the accumulated variance depends on species’ coalescence times. And yet, although they are ultimately inseparable, we often find discrepancies between rate and disparity in empirical datasets (Goswami et al. 2014; Felice et al. 2018). Part of understanding this inconsistency requires us to confront our expectations—specifically, our Brownian expectations. As discussed earlier, disparity through time (DTT) plots have become ubiquitous in studies of morphological evolution, and for good reason: they provide a clear picture of how the distribution of morphological variation changes through time. As noted earlier, when paired with an understanding of evolutionary relationships, DTT plots provide insight into the evolutionary dynamics of a clade, by measuring whether disparity is concentrated between clades (subclade disparity approaches 0) or within clades (subclade disparity approaches 1). In most implementations, the empirical DTT plot is compared with a Brownian expectation (e.g., Slater et al. 2010;

Navalón et al. 2022). While modeled disparity cannot take into account factors such as selective extinction, there are many reasons why disparity may depart from a Brownian expectation, the simplest being that the Brownian model is a poor model for the data. Thus, it is sensible to model disparity using a model that better fits the data. We have mentioned a variety of models, from a single-rate BM model to various implementations of OU processes to time-dependent models, including both AC and EB models. In the following section, we consider some of these models as we demonstrate the impact of evolutionary model on expectations of disparity with a worked example from our recent study of mammal skulls (Goswami et al. 2022).

### Estimating Disparity under Different Evolutionary Models: A Worked Example of Mammal Evolution

DTT plots (Harmon et al. 2003) were computed on 67 PCs that captured 95% of the total variance for a dataset of 322 placental mammals, with skull shape quantified with 66 landmarks and 688 sliding semilandmarks (black curve on Fig. 8). The DTT curves were estimated on 1 Myr time bins (mean binned subclade disparity) using modified codes from Navalón et al. (2022). We estimated through simulations the 95% confidence envelope for the DTT under four alternative models (BM, OU, EB, and a variable-rate BM model with a lambda tree transformation) to compare it to that of the empirical DTT. For each process, 100 datasets were generated with the *simulate* function with parameters from model fit by PL using the *mvgl*s function in mvMORPH R package v. 1.1.8 (Clavel et al. 2015). The variable-rate lambda model was estimated in a previous study (Goswami et al. 2022) using the RJMCMC algorithm implemented in BayesTraits v. 3 (Venditti et al. 2011). To simulate the data under that process, we first used the average branch-specific rates from the BayesTrait MCMC output to scale the branch lengths of the placental phylogenetic tree. This branch length-transformed tree was then used in *mvgl*s to fit a multivariate “lambda” model and to simulate new datasets using the *simulate* function. Because the parameter that describes the decay in rate in the EB model was estimated close to zero on the empirical data—that is, the process behaves like BM—we further simulated DTT with various strengths of early burst to illustrate more standard expectations (Fig. 8A). To do so, we simulated decays representing 2, 5, and 10 half-lives elapsing over the 80 Myr of the placental tree used in the analysis. That is, a mild early burst with a rate that decays by half after 40 Myr (2 half-lives) or a strong EB with a rate that decays by half after only ~8 Myr (10 half-lives). Overall, we can see that the EB (Fig. 8A) and OU processes (Fig. 8B) show a low fit to the empirical DTT and that their trajectories tend toward the opposite corners of the DTT plot. Specifically, the EB model predicts greater disparity between clades than is observed for most of the Cenozoic, while the OU model tends to homogenize variation across clades. The BM process is reasonable in capturing the main disparity pattern, but it misses some bursts in disparity and does not appropriately accommodate the disparity near the present (Fig. 8C), in contrast to the BM variable-rate model (Fig. 8D). This example demonstrates how we can already accommodate complex models into well-established analyses, such as morphological disparity, and how doing so may relieve some of the perceived incongruence of evolutionary rate and disparity and more accurately identify where disparity diverges from more accurate expectations. This is, of course, important, because not all differences observed in rates and disparity are due to methodological oversimplification; some of the incongruence is an accurate reflection of underlying biological factors, as discussed later.

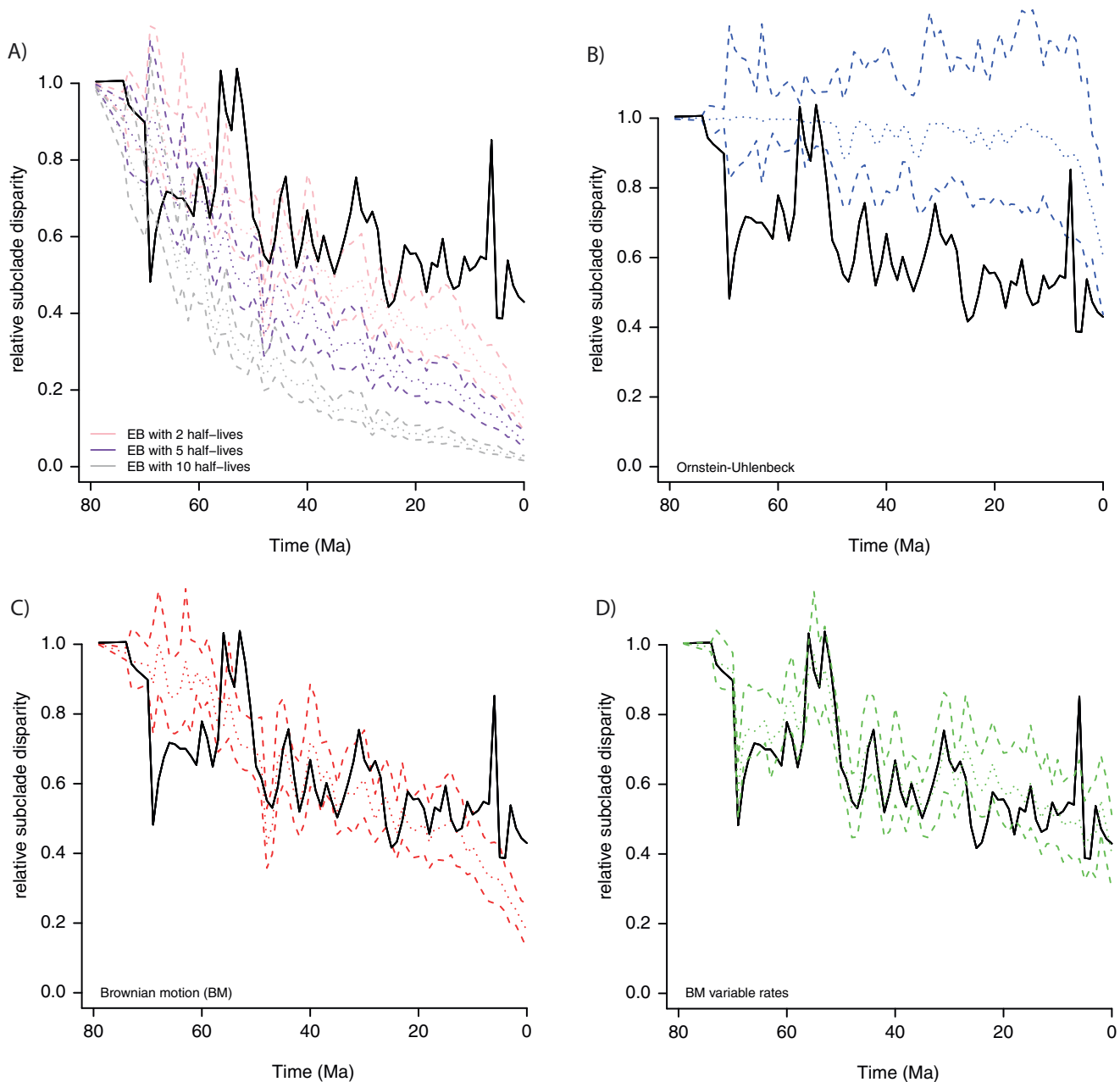
### From Pattern to Process

Quantifying morphology and changes in it across clades, space, or time is inherently interesting, but is rarely the goal of a study. Rather, we generally seek to understand why certain morphologies exist, why they vary, and how they change. We can discriminate this into two key areas, determining which factors are associated with morphological variation and which processes underlie morphological variation. Factors associated with morphological variation can be both intrinsic to the organism, such as ecology, life history, function, or physiology, or extrinsic, such as environment and competition (Baab et al. 2014; Goswami et al. 2016; Arbour et al. 2019; Felice et al. 2019a; Fabre et al. 2020; Bardua et al. 2021). The associations of these various factors and morphology can be assessed statistically using regressions, including the phylogenetic regressions discussed earlier, in which specimens are phylogenetically structured and a phylogeny is available (Goswami et al. 2022). Biotic interactions are another key factor driving trait evolution, but although there are many methods for integrating species interactions into models of trait evolution for univariate traits (Drury et al. 2016; Bartoszek et al. 2017; Clarke et al. 2017; Manceau et al. 2017; Quintero and Landis 2020), there are none at present for high-dimensional data.

These associations can provide deep insight into the drivers of morphological variation, disparity, and change, but they often provide little information on the specific pathways of that change. For that, we need to access information on how morphology is generated, which requires understanding of genetic and developmental patterning of morphology. While much early work on comparative development laid the foundations for this topic (Thompson 1917), the rise of comparative genomics and evolutionary developmental biology has provided novel insights into how morphologies form and change (Noden 1983; Sears 2004; Sears et al. 2007; Brugmann et al. 2010; Young et al. 2010, 2014; Zhang et al. 2014; Green et al. 2017; Bouwman et al. 2018; Claes et al. 2018; Salzburger 2018; Jebb et al. 2020; Yuan et al. 2021; Zhou et al. 2021; Brandon et al. 2022; Carbeck et al. 2023). Now, it is plausible to quantify shape changes through time and tie them to specific changes in genetic architecture or developmental pathways. The opposite is equally possible—starting from a quantification of development and estimating what morphologies could and could not evolve, similar to Raup’s (1966) coiling morphospace but with far greater resolution (Young et al. 2014). Linking phylogeny and developmental data in comparative analysis also allows estimation of ancestral developmental pathways, essentially creating hypotheses of developmental patterning for taxa that will likely never be sampled directly (White et al. 2023).

Of course, the vast majority of biological diversity is extinct. While extracting genomes for species that went extinct in the last few million years is increasingly possible, the fact remains that there is almost no record of genetic or developmental data for the millions of fossil species that have inhabited this planet before modern times, or even for most species alive today. How then can we access this information to link pattern to process across the diversity of living and extinct species? Morphological integration and phenotypic modularity are concepts that are inherently about the relationships among traits but are of widespread interest because those relationships reflect the underlying developmental and genetic architecture of those traits (Wagner 1996; Wagner and Altenberg 1996; Klingenberg 2013; Zelditch and Goswami 2021). Integration refers to the relationships among components within a structure, and modularity refers to the decomposition of a structure into quasi-autonomous, highly integrated modules. Thus,





**Figure 8.** Empirical (black line) vs. expected disparity (relative subclade disparity) for placental mammal skull evolution simulated under four evolutionary models: **A**, Early burst with three alternative parameterizations; **B**, Ornstein-Uhlenbeck (OU); **C**, single-rate Brownian motion (BM); **D**, variable-rate BM with a lambda tree transformation, estimated in Goswami et al. (2022). Dashed lines are 95% confidence intervals, and dotted lines are the mean expectation.

quantitative analysis of the covariances among phenotypic traits allows one to access the intrinsic processes generating those traits, even when direct genetic or developmental data are not available, as is the case for the vast majority of extinct and rare species. Linking trait integration and modularity to specific processes is complicated by overlapping effects (Hallgrímsson et al. 2009), but even where the precise cause of a pattern of integration and modularity is not identifiable, phenotype alone, even from fossil species, is sufficient to estimate those relationships and then identify where in evolutionary history those relationships and their underlying architecture have changed (e.g., Goswami 2006; Webster and Zelditch 2011a, b; Goswami et al. 2015; Felice et al. 2019b; Love et al. 2022).

These relationships among traits also have important consequences for the evolution of species, and, by extension, the evolution of biodiversity, as trait covariances are a primary influence on the variation of individual traits. Strong integration among traits can limit the ability of individual traits to vary and evolve in some directions, while facilitating their evolution in other directions (Schluter 1996; Steppan 1997; Steppan et al. 2002; Marroig and Cheverud 2005; Renaud et al. 2006; Hunt 2007a; Rhoda et al. 2023). This tendency will leave some areas of morphospace unexplored, while likely promoting homoplasy and convergence in other areas (Goswami et al. 2014; Felice et al. 2018). Importantly, this constraint on direction of evolution does not necessarily similarly limit pace of evolution and thus trait integration is one biological cause

for discordance between evolutionary rate and disparity, as described by the fly-in-the-tube model of evolution for integrated phenotypes (Felice et al. 2018).

This effect of trait integration has led to the hypothesis that modularity has increased over evolutionary time to circumvent these potentially constraining effects. There is, however, no conclusive analysis on trends in modularity at present, although there is certainly variation in modularity across major clades (e.g., Goswami 2006; Felice et al. 2019b). It is likely that modularity, like complexity (Marcot and McShea 2007), fails to show biased evolution when rigorously assessed, despite reasonable hypotheses for a trend toward increased modularity (Wagner and Altenberg 1996), but this remains to be tested with sufficient comparative data. One of the major hindrances in assessing trends in modularity and integration is that many of the major shifts in patterns of modularity are observed between large clades, with a high degree of conservation in pattern (if not in magnitude) within major vertebrate clades (Goswami 2006; Porto et al. 2009; Felice et al. 2019b; Watanabe et al. 2019; Bardua et al. 2020; Fabre et al. 2020; Navalón et al. 2020). Assessing trends in modularity thus requires robust comparisons across long-diverged clades, which is difficult with standard geometric morphometric approaches because of the paucity of homologous landmarks in disparate taxa. Moreover, as the key shifts occurred in stem taxa or early representatives of major extant clades, testing this hypothesis requires assessing phenotypic modularity and integration with sufficiently large sample sizes of individual fossil species. This is because it is at the species level where those trait relationships shape variation and, ultimately, evolutionary trajectories (rather than at the level of evolutionary modularity and integration, where the effect, but not the cause, may be discerned). This is but one of many fundamental questions on the drivers and constraints on morphological evolution that will hopefully be addressed by better approaches to quantifying and comparing morphology on macroevolutionary scales and with direct data from extinct species.

### Shifting Bottlenecks, Beyond Data Limitations to Methods Limitations

Centuries of study have provided a rich theoretical framework for the study of evolutionary morphology, but just in the past decade, a monumental shift has occurred in its analysis. Whereas the limiting factor has been data collection and quality, access to online databases and imaging tools is making it increasingly possible to gather multivariate data from thousands of specimens within a few years. Ready access to high-performance computing clusters and stable freeware is an equally important factor for the explosion in scale of evolutionary morphology studies. The rise of artificial intelligence and the application of deep learning and computer vision to image data are already pushing the timescales for data collection from several years to a few hours, although there are still significant issues to resolve for ensuring biologically meaningful comparisons of shape. We can now foresee a day in just a few years when it will be possible to obtain dense morphometric data for hundreds of thousands of species and marry these data with phylogenetic, ecological, life-history, biotic, and geographic information. Where then are the new bottlenecks and next frontiers for the study of morphological evolution? It is undeniable that the size and complexity of phenomic-scale datasets are presently outpacing the ability of analytical tools to robustly reconstruct morphological evolution with high-dimensional data, particularly those that sample a large number of species in a phylogenetic framework. In this

regard, the scale and quality of morphological data are rapidly catching up with their molecular counterparts and presenting new opportunities for robust analysis of the genome–phenome relationship. Going forward, the key areas for improving the study of morphological evolution will be automating the extraction of meaningful, comparable morphometric data from images, integrating fossil data into large phylogenetic trees and downstream evolutionary analyses, generating robust models that accurately reflect the complexity of evolutionary processes, and developing methods that are well suited for high-dimensional data. Combined, these advancements will solidify the emerging field of evolutionary phenomics and appropriately center it around the analysis of unambiguously critical deep-time data.

**Acknowledgments.** This work was influenced by numerous conversations over the past few decades with dozens of brilliant and inspiring colleagues, mentors, and students, to whom we are immensely grateful. We are also grateful for the guitar shops that keep Julien coming back to London. We thank J. Mulqueeney and M. Caimati for assistance with Figure 2. This work was supported by funding from European Research Council grant STG-2014-637171 (to A.G.) and Horizon 2020 MCSA Fellowship IF 797373-EVOTOOLS (to J.C.). The authors acknowledge Research Computing at the James Hutton Institute for providing computational resources and technical support for the “UK’s Crop Diversity Bioinformatics HPC” (BBSRC grants BB/S019669/1 and BB/X019683/1), use of which has contributed to the results reported within this paper.

**Competing Interests.** The authors declare no competing interests.

**Data Availability Statement.** All data and novel code used in this manuscript are freely available at: <https://github.com/JClavel/Morphological-evolution-in-a-time-of-Phenomics>.

### Literature Cited

- Adams, D. C. 2014a. A generalized K statistic for estimating phylogenetic signal from shape and other high-dimensional multivariate data. *Systematic Biology* 63:685–697.
- Adams, D. C. 2014b. A method for assessing phylogenetic least squares models for shape and other high-dimensional multivariate data. *Evolution* 68:2675–2688.
- Adams, D. C., and M. L. Collyer. 2018. Multivariate phylogenetic comparative methods: evaluations, comparisons, and recommendations. *Systematic Biology* 67:14–31.
- Adams, D. C., and M. L. Collyer. 2019. Phylogenetic comparative methods and the evolution of multivariate phenotypes. *Annual Review of Ecology, Evolution, and Systematics* 50:405–425.
- Adams, D. C., F. J. Rohlf, and D. E. Slice. 2013. A field comes of age: geometric morphometrics in the 21st century. *Hystrix, the Italian Journal of Mammalogy* 24:7–14.
- Alexandre, H., J. Vrignaud, B. Mangin, and S. Joly. 2015. Genetic architecture of pollination syndrome transition between hummingbird-specialist and generalist species in the genus *Rhytidophyllum* (Gesneriaceae). *PeerJ* 3:e1028.
- Álvarez-Carretero, S., A. Goswami, Z. Yang, and M. Dos Reis. 2019. Bayesian estimation of species divergence times using correlated quantitative characters. *Systematic Biology* 68:967–986.
- Anderson, M. J. 2001. A new method for non-parametric multivariate analysis of variance. *Austral Ecology* 26:32–46.
- Ané, C. 2008. Analysis of comparative data with hierarchical autocorrelation. *Annals of Applied Statistics* 2:1078–1102.
- Angielczyk, K. D., and H. D. Sheets. 2007. Investigation of simulated tectonic deformation in fossils using geometric morphometrics. *Paleobiology* 33:125–148.
- Arbour, J. H., A. A. Curtis, and S. E. Santana. 2019. Signatures of echolocation and dietary ecology in the adaptive evolution of skull shape in bats. *Nature Communications* 10:2036.
- Arnold, S. J. 1992. Constraints on phenotypic evolution. *American Naturalist* 140:S85–S107.

- Baab, K. L., J. M. G. Perry, F. J. Rohlf, and W. L. Jungers. 2014. Phylogenetic, ecological, and allometric correlates of cranial shape in Malagasy lemuriforms. *Evolution* 68:1450–1468.
- Bapst, D. W. 2013. A stochastic rate-calibrated method for time-scaling phylogenies of fossil taxa. *Methods in Ecology and Evolution* 4:724–733.
- Bardua, C., R. N. Felice, A. Watanabe, A.-C. Fabre, and A. Goswami. 2019. A practical guide to sliding and surface semilandmarks in morphometric analyses. *Integrative Organismal Biology* 1:obz016.
- Bardua, C., A.-C. Fabre, M. Bon, K. Das, E. L. Stanley, D. C. Blackburn, and A. Goswami. 2020. Evolutionary integration of the frog cranium. *Evolution* 74:1200–1215.
- Bardua, C., A.-C. Fabre, J. Clavel, M. Bon, K. Das, E. L. Stanley, D. C. Blackburn, and A. Goswami. 2021. Size, microhabitat, and loss of larval feeding drive cranial diversification in frogs. *Nature Communications* 12: 2503.
- Bartoszek, K., J. Pienaar, P. Mostad, S. Andersson, and T. F. Hansen. 2012. A phylogenetic comparative method for studying multivariate adaptation. *Journal of Theoretical Biology* 314:204–215.
- Bartoszek, K., S. Glémin, I. Kaj, and M. Lascoux. 2017. Using the Ornstein–Uhlenbeck process to model the evolution of interacting populations. *Journal of Theoretical Biology* 429:35–45.
- Bartoszek, K., J. Fuentes-González, V. Mitov, J. Pienaar, M. Piwczyński, R. Puchalka, K. Spalik, and K. L. Voje. 2023. Analytical advances alleviate model misspecification in non–Brownian multivariate comparative methods. *Evolution* 78:389–400.
- Bastide, P., C. Ané, S. Robin, and M. Mariadassou. 2018. Inference of adaptive shifts for multivariate correlated traits. *Systematic Biology* 67:662–680.
- Benson, R. B. J., G. Hunt, M. T. Carrano, and N. Campione. 2018. Cope's rule and the adaptive landscape of dinosaur body size evolution. *Palaeontology* 61:13–48.
- Benson, R. B. J., R. Butler, R. A. Close, E. Saupe, and D. L. Rabosky. 2021. Biodiversity across space and time in the fossil record. *Current Biology* 31: R1225–R1236.
- Benton, M. J. 1995. Diversification and extinction in the history of life. *Science* 268:52–58.
- Blomberg, S. P., T. Garland Jr., and A. R. Ives. 2003. Testing for phylogenetic signal in comparative data: behavioral traits are more labile. *Evolution* 57: 717–745.
- Bokma, F., M. Godinot, O. Maridet, S. Ladevèze, L. Costeur, F. Solé, E. Gheerbrant, S. Peigné, F. Jacques, and M. Laurin. 2016. Testing for Depérét's Rule (body size increase) in mammals using combined extinct and extant data. *Systematic Biology* 65:98–108.
- Bône, A., M. Louis, B. Martin, and S. Durrleman. 2018. Deformetrica 4: an open-source software for statistical shape analysis. Pp. 3–13 in M. Reuter, C. Wachinger, H. Lombaert, B. Paniagua, M. Lüthi, and B. Egger, eds. *Shape in Medical Imaging*. Lecture Notes in Computer Science 11167. Springer, Cham.
- Booher, D. B., J. C. Gibson, C. Liu, J. T. Longino, B. L. Fisher, M. Janda, N. Narula, et al. 2021. Functional innovation promotes diversification of form in the evolution of an ultrafast trap-jaw mechanism in ants. *PLoS Biology* 19: e3001031.
- Bookstein, F. L. 1986. Size and shape spaces for landmark data in two dimensions. *Statistical Science* 1:181–242.
- Bookstein, F. L. 1991. *Morphometric tools for landmark data: geometry and biology*. Cambridge University Press, Cambridge.
- Bookstein, F. L. 1997. Landmark methods for forms without landmarks: morphometrics of group differences in outline shape. *Medical Image Analysis* 1:225–243.
- Bookstein, F. L. 2012. Random walk as a null model for high-dimensional morphometrics of fossil series: geometrical considerations. *Paleobiology* 39: 52–74.
- Bouwman, A. C., H. D. Daetwyler, A. J. Chamberlain, C. H. Ponce, M. Sargolzaei, F. S. Schenkel, G. Sahana, et al. 2018. Meta-analysis of genome-wide association studies for cattle stature identifies common genes that regulate body size in mammals. *Nature Genetics* 50:362–367.
- Boyer, D. M., J. Puente, J. T. Gladman, C. Glynn, S. Mukherjee, G. S. Yapuncich, and I. Daubechies. 2015. A new fully automated approach for aligning and comparing shapes. *Anatomical Record* 298:249–276.
- Boyer, D. M., G. F. Gunnell, S. Kaufman, and T. M. McGeary. 2016. Morphosource: archiving and sharing 3D digital specimen data. *Paleontological Society Papers* 22:157–181.
- Brandon, A. A., D. Almeida, and K. E. Powder. 2022. Neural crest cells as a source of microevolutionary variation. *Seminars in Cell and Developmental Biology* 145:42–51.
- Briggs, D. E. G., R. A. Fortey, and M. A. Wills. 1992. Morphological disparity in the Cambrian. *Science* 256:1670–1673.
- Brinkworth, A. 2019. Body mass evolution of South American hystricognath rodents, and the role of climate. M.S. thesis. Imperial College London, London.
- Brugmann, S. A., K. E. Powder, N. M. Young, L. H. Goodnough, S. M. Hahn, A. W. James, J. A. Helms, and M. Lovett. 2010. Comparative gene expression analysis of avian embryonic facial structures reveals new candidates for human craniofacial disorders. *Human Molecular Genetics* 19:920–930.
- Brusatte, S. L., M. J. Benton, M. Ruta, and G. T. Lloyd. 2008. Superiority, competition, and opportunism in the evolutionary radiation of dinosaurs. *Science* 321:1485–1488.
- Burin, G., T. Park, T. D. James, G. J. Slater, and N. Cooper. 2023. The dynamic adaptive landscape of cetacean body size. *Current Biology* 33:1787–1794.e3.
- Butler, R. J., and A. Goswami. 2008. Body size evolution in Mesozoic birds: little evidence for Cope's rule. *Journal of Evolutionary Biology* 21:1673–1682.
- Caetano, D. S., and L. J. Harmon. 2017. ratematrix: an R package for studying evolutionary integration among several traits on phylogenetic trees. *Methods in Ecology and Evolution* 8:1920–1927.
- Caetano, D. S., and L. J. Harmon. 2019. Estimating correlated rates of trait evolution with uncertainty. *Systematic Biology* 68:412–429.
- Carbeck, K., P. Arcese, I. Lovette, C. Pruett, K. Winker, and J. Walsh. 2023. Candidate genes under selection in song sparrows co-vary with climate and body mass in support of Bergmann's Rule. *Nature Communications* 14:6974.
- Cardini, A., and P. D. Polly. 2013. Larger mammals have longer faces because of size-related constraints on skull form. *Nature Communications* 4:2458.
- Chartier, M., F. Jabbour, S. Gerber, P. Mitteroecker, H. Sauquet, M. von Balthazar, Y. Staedler, P. R. Crane, and J. Schönenberger. 2014. The floral morphospace—a modern comparative approach to study angiosperm evolution. *New Phytologist* 204:841–853.
- Chirat, R., D. E. Moulton, and A. Goriely. 2013. Mechanical basis of morphogenesis and convergent evolution of spiny seashells. *Proceedings of the National Academy of Sciences USA* 110:6015–6020.
- Christmas, M. J., I. M. Kaplow, D. P. Genereux, M. X. Dong, G. M. Hughes, X. Li, P. F. Sullivan, et al. 2023. Evolutionary constraint and innovation across hundreds of placental mammals. *Science* 380:eabn3943.
- Claes, P., J. Roosenboom, J. D. White, T. Swigut, D. Sero, J. Li, M. K. Lee, et al. 2018. Genome-wide mapping of global-to-local genetic effects on human facial shape. *Nature Genetics* 50:414–423.
- Clark, J. W., A. J. Hetherington, J. L. Morris, S. Pressel, J. G. Duckett, M. N. Puttick, H. Schneider, P. Kenrick, C. H. Wellman, and P. C. J. Donoghue. 2023. Evolution of phenotypic disparity in the plant kingdom. *Nature Plants* 9:1618–1626.
- Clarke, M., G. H. Thomas, and R. P. Freckleton. 2017. Trait evolution in adaptive radiations: modeling and measuring interspecific competition on phylogenies. *American Naturalist* 189:121–137.
- Clavel, J., and H. Morlon. 2017. Accelerated body size evolution during cold climatic periods in the Cenozoic. *Proceedings of the National Academy of Sciences USA* 114:4183–4188.
- Clavel, J., and H. Morlon. 2020. Reliable phylogenetic regressions for multivariate comparative data: illustration with the MANOVA and application to the effect of diet on mandible morphology in Phyllostomid bats. *Systematic Biology* 69:927–943.
- Clavel, J., G. Escarguel, and G. Merceron. 2015. mvMORPH: an R package for fitting multivariate evolutionary models to morphometric data. *Methods in Ecology and Evolution* 6:1311–1319.
- Clavel, J., L. Aristide, and H. Morlon. 2019. A penalized likelihood framework for high-dimensional phylogenetic comparative methods and an application to New-World monkeys brain evolution. *Systematic Biology* 68:93–116.
- Coombs, E. J., R. N. Felice, J. Clavel, T. Park, R. F. Bennion, M. Churchill, J. H. Geisler, B. Beatty, and A. Goswami. 2022. The tempo of cetacean cranial evolution. *Current Biology* 32:2233–2247.e4.
- Cooney, C. R., and G. H. Thomas. 2021. Heterogeneous relationships between rates of speciation and body size evolution across vertebrate clades. *Nature Ecology and Evolution* 5:101–110.



- Cooney, C. R., J. A. Bright, E. J. R. Capp, A. M. Chira, E. C. Hughes, C. J. A. Moody, L. O. Nouri, Z. K. Varley, and G. H. Thomas. 2017. Mega-evolutionary dynamics of the adaptive radiation of birds. *Nature* **542**: 344–347.
- Cooper, N., G. H. Thomas, and R. G. FitzJohn. 2016. Shedding light on the “dark side” of phylogenetic comparative methods. *Methods in Ecology and Evolution* **7**:693–699.
- Cope, E. D. 1885a. On the evolution of the Vertebrata, progressive and retrogressive. *American Naturalist* **19**:140–148.
- Cope, E. D. 1885b. On the evolution of the Vertebrata, progressive and retrogressive (Continued). *American Naturalist* **19**:234–247.
- Cope, E. D. 1885c. On the evolution of the Vertebrata, progressive and retrogressive (Continued). *American Naturalist* **19**:341–353.
- Cornwell, W., and S. Nakagawa. 2017. Phylogenetic comparative methods. *Current Biology* **27**:R333–R336.
- Cramer, B. S., K. G. Miller, P. J. Barrett, and J. D. Wright. 2011. Late Cretaceous–Neogene trends in deep ocean temperature and continental ice volume: reconciling records of benthic foraminiferal geochemistry ( $d^{18}O$  and  $Mg/Ca$ ) with sea level history. *Journal of Geophysical Research* **116**:1–23.
- Crampton, J. S. 1995. Elliptic Fourier shape analysis of fossil bivalves: some practical considerations. *Lethaia* **28**:179–186.
- Cross, R. 2017. The inside story of 20,000 vertebrates. *Science* **357**:742–743.
- Darwin, C. 1859. *On the origin of species by means of natural selection, or the preservation of favoured races in the struggle for life*. John Murray, London.
- Davies, T. G., I. A. Rahman, S. Lautenschlager, J. A. Cunningham, R. J. Asher, P. M. Barrett, K. T. Bates, et al. 2017. Open data and digital morphology. *Proceedings of the Royal Society of London B* **284**:20170194.
- Deline, B., and W. I. Ausich. 2017. Character selection and the quantification of morphological disparity. *Paleobiology* **43**:68–84.
- Devine, J., J. D. Aponte, D. C. Katz, W. Liu, L. D. L. Vercio, N. D. Forkert, R. Marcucio, C. J. Percival, and B. Hallgrímsson. 2020. A registration and deep learning approach to automated landmark detection for geometric morphometrics. *Evolutionary Biology* **47**:246–259.
- Devine, J., M. Vidal-García, W. Liu, A. Neves, L. D. Lo Vercio, R. M. Green, H. A. Richbourg, et al. 2022. MusMorph, a database of standardized mouse morphology data for morphometric meta-analyses. *Scientific Data* **9**:230.
- Dickson, B. V., J. A. Clack, T. R. Smithson, and S. E. Pierce. 2021. Functional adaptive landscapes predict terrestrial capacity at the origin of limbs. *Nature* **589**:242–245.
- Dobzhansky, T. 1937. *Genetics and the origin of species*. Columbia University Press, New York.
- Drury, J., J. Clavel, M. Manceau, and H. Morlon. 2016. Estimating the effect of competition on trait evolution using maximum likelihood inference. *Systematic Biology* **65**:700–710.
- Dryden, I. L., and K. V. Mardia. 1992. Size and shape analysis of landmark data. *Biometrika* **79**:57–68.
- Durrleman, S., M. Prastawa, N. Charon, J. R. Korenberg, S. Joshi, G. Gerig, and A. Trounev. 2014. Morphometry of anatomical shape complexes with dense deformations and sparse parameters. *NeuroImage* **101**:35–49.
- Eble, G. J. 2000. Contrasting evolutionary flexibility in sister groups: disparity and diversity in Mesozoic atelostomate echinoids. *Paleobiology* **26**:56–79.
- Eldredge, N., and S. J. Gould. 1972. Punctuated equilibria: an alternative to phyletic gradualism. Pp. 82–115 in T. J. M. Schopf, ed. *Models in paleobiology*. Freeman, Cooper, San Francisco.
- Evans, A. R., D. Jones, A. G. Boyer, J. H. Brown, D. P. Costa, S. K. M. Ernest, E. M. G. Fitzgerald, et al. 2012. The maximum rate of mammal evolution. *Proceedings of the National Academy of Sciences USA* **109**:4187–4190.
- Fabre, A.-C., C. Bardua, M. Bon, J. Clavel, R. N. Felice, J. W. Streicher, J. Bonnel, E. L. Stanley, D. C. Blackburn, and A. Goswami. 2020. Metamorphosis shapes cranial diversity and rate of evolution in salamanders. *Nature Ecology and Evolution* **4**:1129–1140.
- Falkingham, P. L. 2011. Acquisition of high resolution three-dimensional models using free, open-source, photogrammetric software. *Palaeontologia Electronica* **15**:1–15.
- Felice, R. N., M. Randau, and A. Goswami. 2018. A fly in a tube: macroevolutionary expectations for integrated phenotypes. *Evolution* **72**:2580–2594.
- Felice, R. N., J. A. Tobias, A. L. Pigot, and A. Goswami. 2019a. Dietary niche and the evolution of cranial morphology in birds. *Proceedings of the Royal Society of London B* **286**:20182677.
- Felice, R. N., A. Watanabe, A. R. Cuff, E. Noirault, D. Pol, L. M. Witmer, M. A. Norell, P. M. O'Connor, and A. Goswami. 2019b. Evolutionary integration and modularity in the archosaur cranium. *Integrative and Comparative Biology* **59**:371–382.
- Felsenstein, J. 1985. Phylogenies and the comparative method. *American Naturalist* **125**:1–15.
- Finarelli, J. A., and A. Goswami. 2013. Potential pitfalls of reconstructing deep time evolutionary history with only extant data, a case study using the Canidae (Mammalia, Carnivora). *Evolution* **67**:3678–3685.
- Foley, N. M., M. S. Springer, and E. C. Teeling. 2016. Mammal madness: is the mammal tree of life not yet resolved? *Philosophical Transactions of the Royal Society of London B* **371**:20150140.
- Fondon, J. W., and H. R. Garner. 2004. Molecular origins of rapid and continuous morphological evolution. *Proceedings of the National Academy of Sciences USA* **101**:18058–18063.
- Foote, M. 1992a. Paleozoic record of morphological diversity in blastozoan echinoderms. *Proceedings of the National Academy of Sciences USA* **89**: 7325–7329.
- Foote, M. 1992b. Rarefaction analysis of morphological and taxonomic diversity. *Paleobiology* **18**:1–16.
- Foote, M. 1993a. Contributions of individual taxa to overall morphological disparity. *Paleobiology* **19**:403–419.
- Foote, M. 1993b. Discordance and concordance between morphological and taxonomic diversity. *Paleobiology* **19**:185–204.
- Foote, M. 1994. Morphological disparity in Ordovician–Devonian crinoids and the early saturation of morphological space. *Paleobiology* **20**:320–344.
- Foote, M. 1995. Morphological diversification of Paleozoic crinoids. *Paleobiology* **21**:273–299.
- Foote, M. 1996. Perspective: evolutionary patterns in the fossil record. *Evolution* **50**:1–11.
- Foote, M. 1997a. The evolution of morphological diversity. *Annual Review of Ecology and Systematics* **28**:129–152.
- Foote, M. 1997b. Sampling, taxonomic description, and our evolving knowledge of morphological diversity. *Paleobiology* **23**:181–206.
- Foote, M. 1999. Morphological diversity in the evolutionary radiation of Paleozoic and post-Paleozoic crinoids. *Paleobiology* **25**:1–115.
- Foote, M., S. J. Gould, M. S. Y. Lee, D. E. G. Briggs, R. A. Fortey, and M. A. Wills. 1992. Cambrian and Recent morphological disparity. *Science* **258**: 1816–1818.
- Fortey, R. A., D. E. G. Briggs, and M. A. Wills. 1996. The Cambrian evolutionary “explosion”: decoupling cladogenesis from morphological disparity. *Biological Journal of the Linnean Society* **57**:13–33.
- Fruciano, C., P. Franchini, V. Kovacova, K. R. Elmer, F. Henning, and A. Meyer. 2016. Genetic linkage of distinct adaptive traits in sympatrically speciating crater lake cichlid fish. *Nature Communications* **7**:12736.
- Garamszegi, L. Z., ed. 2014. *Modern phylogenetic comparative methods and their application in evolutionary biology: concepts and practice*. Springer, Berlin.
- Gardiner, J. D., J. Behnsen, and C. A. Brassey. 2018. Alpha shapes: determining 3D shape complexity across morphologically diverse structures. *BMC Evolutionary Biology* **18**:184.
- Gerber, S. 2017. The geometry of morphospaces: lessons from the classic Raup shell coiling model. *Biological Reviews* **92**:1142–1155.
- Gontier, N. 2011. Depicting the tree of life: the philosophical and historical roots of evolutionary tree diagrams. *Evolution: Education and Outreach* **4**:515–538.
- Goodall, C. 1991. Procrustes methods in the statistical analysis of shape. *Journal of the Royal Statistical Society, series B* **53**:285–339.
- Goolsby, E. W. 2015. Phylogenetic comparative methods for evaluating the evolutionary history of function-valued traits. *Systematic Biology* **64**: 568–578.
- Goolsby, E. W. 2016. Likelihood-based parameter estimation for high-dimensional phylogenetic comparative models: overcoming the limitations of “distance-based” methods. *Systematic Biology* **65**:852–870.
- Goolsby, E. W., J. Bruggemann, and C. Ané. 2017. Rphylopars: fast multivariate phylogenetic comparative methods for missing data and within-species variation. *Methods in Ecology and Evolution* **8**:22–27.
- Goswami, A. 2006. Cranial modularity shifts during mammalian evolution. *American Naturalist* **168**:270–280.
- Goswami, A. 2014. Phenome10k. <https://www.phenome10k.org>.

- Goswami, A., J. B. Smaers, C. Soligo, and P. D. Polly. 2014. The macroevolutionary consequences of phenotypic integration: from development to deep time. *Philosophical Transactions of the Royal Society of London B* 369:20130254.
- Goswami, A., W. J. Binder, J. Meachen, and F. R. O'Keefe. 2015. The fossil record of phenotypic integration and modularity: a deep-time perspective on developmental and evolutionary dynamics. *Proceedings of the National Academy of Sciences USA* 112:4891–4896.
- Goswami, A., M. Randau, P. D. Polly, V. Weisbecker, C. V. Bennett, L. Hautier, and M. R. Sánchez-Villagra. 2016. Do developmental constraints and high integration limit the evolution of the marsupial oral apparatus? *Integrative and Comparative Biology* 56:404–415.
- Goswami, A., A. Watanabe, R. N. Felice, C. Bardua, A.-C. Fabre, and P. D. Polly. 2019. High-density morphometric analysis of shape and integration: the good, the bad, and the not-really-a-problem. *Integrative and Comparative Biology* 59:669–683.
- Goswami, A., E. Noirault, E. J. Coombs, J. Clavel, A.-C. Fabre, T. J. D. Halliday, M. Churchill, et al. 2022. Attenuated evolution of mammals through the Cenozoic. *Science* 378:377–383.
- Goswami, A., E. Noirault, E. J. Coombs, J. Clavel, A.-C. Fabre, T. J. D. Halliday, M. Churchill, et al. 2023. Developmental origin underlies evolutionary rate variation across the placental skull. *Philosophical Transactions of the Royal Society of London B* 378:20220083.
- Gould, S. J. 1966. Allometry and size in ontogeny and phylogeny. *Biological Reviews* 41:587–638.
- Gould, S. J. 1970. Evolutionary paleontology and the science of form. *Earth-Science Reviews* 6:77–119.
- Gould, S. J. 1971. Geometric similarity in allometric growth: a contribution to the problem of scaling in the evolution of size. *American Naturalist* 105:113–136.
- Gould, S. J. 1980. The promise of paleobiology as a nomothetic, evolutionary discipline. *Paleobiology* 6:96–118.
- Gould, S. J. 1988. Trends as changes in variance: a new slant on progress and directionality in evolution. *Journal of Paleontology* 62:319–329.
- Gould, S. J. 1991. The disparity of the Burgess shale arthropod fauna and the limits of cladistic analysis: why we must strive to quantify morphospace. *Paleobiology* 17:411–423.
- Gould, S. J., and N. Eldredge. 1977. Punctuated equilibria: the tempo and mode of evolution reconsidered. *Paleobiology* 3:115–151.
- Gould, S. J., and R. C. Lewontin. 1979. The spandrels of San Marco and the Panglossian paradigm: a critique of the adaptationist programme. *Proceedings of the Royal Society of London B* 205:581–598.
- Gower, J. C. 1975. Generalized Procrustes analysis. *Psychometrika* 40:33–51.
- Green, R. M., J. L. Fish, N. M. Young, F. J. Smith, B. Roberts, K. Dolan, I. Choi, et al. 2017. Developmental nonlinearity drives phenotypic robustness. *Nature Communications* 8:1970.
- Guillermé, T., and N. Cooper. 2018. Time for a rethink: time sub-sampling methods in disparity-through-time analyses. *Palaeontology* 61:481–493.
- Guillermé, T., N. Cooper, S. L. Brusatte, K. E. Davis, A. L. Jackson, S. Gerber, A. Goswami, et al. 2020a. Disparities in the analysis of morphological disparity. *Biology Letters* 16:20200199.
- Guillermé, T., M. N. Puttick, A. E. Marcy, and V. Weisbecker. 2020b. Shifting spaces: which disparity or dissimilarity measurement best summarize occupancy in multidimensional spaces? *Ecology and Evolution* 10:7261–7275.
- Gunz, P., and P. Mitteroecker. 2013. Semilandmarks: a method for quantifying curves and surfaces. *Hystrix, the Italian Journal of Mammalogy* 24:103–109.
- Haines, A. J., and J. S. Crampton. 2000. Improvements to the method of Fourier shape analysis as applied in morphometric studies. *Palaeontology* 43:765–783.
- Hallgrímsson, B., H. Jamniczky, N. M. Young, C. Rolian, T. E. Parsons, J. C. Boughner, and R. S. Marcucio. 2009. Deciphering the palimpsest: studying the relationship between morphological integration and phenotypic covariation. *Evolutionary Biology* 36:355–376.
- Halliday, T. J. D., and A. Goswami. 2016. Eutherian morphological disparity across the end-Cretaceous mass extinction. *Biological Journal of the Linnean Society* 118:152–168.
- Halliday, T. J. D., P. Upchurch, and A. Goswami. 2016. Eutherians experienced elevated evolutionary rates in the immediate aftermath of the Cretaceous–Palaeogene mass extinction. *Proceedings of the Royal Society of London B* 283:20153026.
- Harmon, L. J., J. A. Schulte II, A. Larson, and J. B. Losos. 2003. Tempo and mode of evolutionary radiation in Iguanian lizards. *Science* 301:961–964.
- Harmon, L. J., J. T. Weir, C. D. Brock, R. E. Glor, and W. Challenger. 2008. GEIGER: investigating evolutionary radiations. *Bioinformatics* 24:129–131.
- Harmon, L. J., M. W. Pennell, L. F. Henao-Diaz, J. Rolland, B. N. Siple, and J. C. Uyeda. 2021. Causes and consequences of apparent timescaling across all estimated evolutionary rates. *Annual Review of Ecology, Evolution, and Systematics* 52:587–609.
- Hassler, G. W., B. Gallone, L. Aristide, W. L. Allen, M. R. Tolkoff, A. J. Holbrook, G. Baele, P. Lemey, and M. A. Suchard. 2022. Principled, practical, flexible, fast: a new approach to phylogenetic factor analysis. *Methods in Ecology and Evolution* 13:2181–2197.
- He, Y., J. M. Mulqueeny, E. Watt, A. Salili-James, N. S. Barber, M. Camaiti, E. S. E. Hunt, et al. 2024a. Opportunities and challenges in applying AI to evolutionary morphology. *Integrative Organismal Biology* 6:oba036.
- He, Y., M. Camaiti, L. E. Roberts, J. M. Mulqueeny, M. Didziokas, A. Goswami. 2024b. Introducing SPROUT (Semi-automated Parcellation of Region Outputs Using Thresholding): an adaptable computer vision tool to generate 3D segmentations. *BioRxiv* <https://doi.org/10.1101/2024.11.22.624847>
- Hennig, W. 1965. Phylogenetic systematics. *Annual Review of Entomology* 10:97–116.
- Hernández, C. E., E. Rodríguez-Serrano, J. Avaria-Llautureo, O. Inostroza-Michael, B. Morales-Pallero, D. Boric-Bargetto, C. B. Canales-Aguirre, P. A. Marquet, and A. Meade. 2013. Using phylogenetic information and the comparative method to evaluate hypotheses in macroecology. *Methods in Ecology and Evolution* 4:401–415.
- Ho, L. S. T., and C. Ané. 2013. Asymptotic theory with hierarchical autocorrelation: Ornstein-Uhlenbeck tree models. *Annals of Statistics* 41:957–981.
- Ho, L. S. T., and C. Ané. 2014a. Intrinsic inference difficulties for trait evolution with Ornstein-Uhlenbeck models. *Methods in Ecology and Evolution* 5:1133–1146.
- Ho, L. S. T., and C. Ané. 2014b. A linear-time algorithm for Gaussian and non-Gaussian trait evolution models. *Systematic Biology* 63:397–408.
- Höhna, S., M. J. Landis, T. A. Heath, B. Boussau, N. Lartillot, B. R. Moore, J. P. Huelsenbeck, and F. Ronquist. 2016. RevBayes: Bayesian phylogenetic inference using graphical models and an interactive model-specification language. *Systematic Biology* 65:726–736.
- Holliday, J. A., and S. J. Steppan. 2004. Evolution of hypercarnivory: the effect of specialization on morphological and taxonomic diversity. *Paleobiology* 30:108–128.
- Hopkins, M. J. 2014. The environmental structure of trilobite morphological disparity. *Paleobiology* 40:352–373.
- Houle, D., D. R. Govindaraju, and S. Omholt. 2010. Phenomics: the next challenge. *Nature Reviews Genetics* 11:855–866.
- Hsiang, A. Y., K. Nelson, L. E. Elder, E. C. Sibert, S. S. Kahanamoku, J. E. Burke, A. Kelly, Y. Liu, and P. M. Hull. 2018. AutoMorph: accelerating morphometrics with automated 2D and 3D image processing and shape extraction. *Methods in Ecology and Evolution* 9:605–612.
- Hughes, M., S. Gerber, and M. A. Wills. 2015. Clades reach highest morphological disparity early in their evolution. *Proceedings of the National Academy of Sciences USA* 110:13875–13879.
- Hunt, G. 2006. Fitting and comparing models of phyletic evolution: random walks and beyond. *Paleobiology* 32:578–601.
- Hunt, G. 2007a. Evolutionary divergence in directions of high phenotypic variance in the ostracode genus *Poseidonamicus*. *Evolution* 61:1560–1576.
- Hunt, G. 2007b. The relative importance of directional change, random walks, and stasis in the evolution of fossil lineages. *Proceedings of the National Academy of Sciences USA* 104:18404–18408.
- Hunt, G. 2012. Measuring rates of phenotypic evolution and the inseparability of tempo and mode. *Paleobiology* 38(3):351–373.
- Jablonski, D. 1996. Body size and macroevolution. Pp. 256–289 in D. Jablonski, D. H. Erwin, and J. H. Lipps, eds. *Evolutionary paleobiology*. University of Chicago Press, Chicago.
- Jablonski, D., W. G. Chaloner, and A. Hallam. 1997. The biology of mass extinction: a palaeontological view. *Philosophical Transactions of the Royal Society of London B* 325:357–368.

- Jebb, D., Z. Huang, M. Pippel, G. M. Hughes, K. Lavrichenko, P. Devanna, S. Winkler, et al. 2020. Six reference-quality genomes reveal evolution of bat adaptations. *Nature* 583:578–584.
- Jernvall, J., J. P. Hunter, and M. Fortelius. 1996. Molar tooth diversity, disparity and ecology in Cenozoic ungulate radiations. *Science* 274:1489–1492.
- Jones, K. E., B. V. Dickson, K. D. Angielczyk, and S. E. Pierce. 2021. Adaptive landscapes challenge the “lateral-to-sagittal” paradigm for mammalian vertebral evolution. *Current Biology* 31:1883–1892.
- Khabbazian, M., R. Kriebel, K. Rohe, and C. Ané. 2016. Fast and accurate detection of evolutionary shifts in Ornstein–Uhlenbeck models. *Methods in Ecology and Evolution* 7:811–824.
- Kirveslahti, H., and S. Mukherjee. 2021. Representing fields without correspondences: the lifted Euler Characteristic transform. *ArXiv:2111.04788*.
- Klingenberg, C. P. 2013. Cranial integration and modularity: insights into evolution and development from morphometric data. *Hystrix, the Italian Journal of Mammalogy* 24:43–58.
- Lande, R. 1976. Natural selection and random genetic drift in phenotypic evolution. *Evolution* 30:314–334.
- Lanzetti, A., N. Chrouh, R. Portela Míguez, V. Fernandez, and A. Goswami. 2022. Developing echolocation: distinctive patterns in the ontogeny of the tympanoperiotic complex in baleen and toothed whales (Cetacea). *Biological Journal of the Linnean Society* 135:394–406.
- Lartillot, N., and R. Poujol. 2011. A phylogenetic model for investigating correlated evolution of substitution rates and continuous phenotypic characters. *Molecular Biology and Evolution* 28:729–744.
- Lee, M. S. Y., and A. Palci. 2015. Morphological phylogenetics in the genomic age. *Current Biology* 25:R922–R929.
- Lemey, P., A. Rambaut, J. J. Welch, and M. A. Suchard. 2010. Phylogeography takes a relaxed random walk in continuous space and time. *Molecular Biology and Evolution* 27:1877–1885.
- Levy Karin, E., S. Wicke, T. Pupko, and I. Mayrose. 2017. An integrated model of phenotypic trait changes and site-specific sequence evolution. *Systematic Biology* 66:917–933.
- Lewontin, R. C. 1966. On the measurement of relative variability. *Systematic Zoology* 15:141–142.
- Lloyd, G. T., and G. J. Slater. 2021. A total-group phylogenetic metatree for Cetacea and the importance of fossil data in diversification analyses. *Systematic Biology* 70:922–939.
- Lösel, P. D., T. van de Kamp, A. Jayme, A. Ershov, T. Faragó, O. Pichler, N. Tan Jerome, et al. 2020. Introducing Biomedisa as an open-source online platform for biomedical image segmentation. *Nature Communications* 11:5577.
- Love, A. C., M. Grabowski, D. Houle, L. H. Liow, A. Porto, M. Tsuboi, K. L. Voje, and G. Hunt. 2022. Evolvability in the fossil record. *Paleobiology* 48:186–209.
- Luo, A., D. A. Duchêne, C. Zhang, C.-D. Zhu, and S. Y. W. Ho. 2020. A simulation-based evaluation of tip-dating under the fossilized birth–death process. *Systematic Biology* 69:325–344.
- Lyson, T. R., and G. S. Bever. 2020. Origin and evolution of the turtle body plan. *Annual Review of Ecology, Evolution, and Systematics* 51:143–166.
- MacLeod, N. 1999. Generalizing and extending the eigenshape method of shape space visualization and analysis. *Paleobiology* 25:107–138.
- Maga, A. M., N. Navarro, M. L. Cunningham, and T. C. Cox. 2015. Quantitative trait loci affecting the 3D skull shape and size in mouse and prioritization of candidate genes in-silico. *Frontiers in Physiology* 6:92.
- Mallison, H., and O. Wings. 2014. Photogrammetry in paleontology—a practical guide. *Journal of Paleontological Techniques* 12:1–31.
- Manceau, M., A. Lambert, and H. Morlon. 2017. A unifying comparative phylogenetic framework including traits coevolving across interacting lineages. *Systematic Biology* 66:551–568.
- Marcot, J. D., and D. W. McShea. 2007. Increasing hierarchical complexity throughout the history of life: phylogenetic tests of trend mechanisms. *Paleobiology* 33:182–200.
- Mardia, K. V., and I. L. Dryden. 1989. The statistical analysis of shape data. *Biometrika* 76:271–281.
- Mardia, K. V., J. T. Kent, and J. M. Bibby. 1979. *Multivariate analysis*. Academic Press, London.
- Marroig, G., and J. M. Cheverud. 2005. Size as a line of least evolutionary resistance: diet and adaptive morphological radiation in New World monkeys. *Evolution* 59:1128–1142.
- Marshall, A. F., C. Bardua, D. J. Gower, M. Wilkinson, E. Sherratt, and A. Goswami. 2019. High-density three-dimensional morphometric analyses support conserved static (intraspecific) modularity in caecilian (Amphibia: Gymnophiona) crania. *Biological Journal of the Linnean Society* 126:721–742.
- Martins, E. P. 1996. Conducting phylogenetic comparative analyses when the phylogeny is not known. *Evolution* 50:12–22.
- Martins, E. P., and E. A. Housworth. 2002. Phylogeny shape and the phylogenetic comparative method. *Systematic Biology* 51:873–880.
- McGhee, G. R. 2006. *The geometry of evolution: adaptive landscapes and theoretical morphospaces*. Cambridge University Press, Cambridge.
- McGhee, G. R. 2015. Limits in the evolution of biological form: a theoretical morphologic perspective. *Interface Focus* 5:20150034.
- McPeck, M. A., L. Shen, J. Z. Torrey, and H. Farid. 2008. The tempo and mode of three-dimensional morphological evolution in male reproductive structures. *American Naturalist* 171:158–178.
- Mitov, V., K. Bartoszek, G. Asimomitis, and T. Stadler. 2020. Fast likelihood calculation for multivariate Gaussian phylogenetic models with shifts. *Theoretical Population Biology* 131:66–78.
- Mitteroecker, P., and S. M. Huttegger. 2009. The Concept of morphospaces in evolutionary and developmental biology: mathematics and metaphors. *Biological Theory* 4:54–67.
- Mitteroecker, P., and K. Schaefer. 2022. Thirty years of geometric morphometrics: achievements, challenges, and the ongoing quest for biological meaningfulness. *American Journal of Biological Anthropology* 178:181–210.
- Mulqueeny, J. M., T. H. Ezard, and A. Goswami. 2024a. Assessing the application of landmark-free morphometrics to macroevolutionary analyses. *bioRxiv* <https://doi.org/10.1101/2024.04.24.590959>.
- Mulqueeny, J. M., A. Searle-Barnes, A. Brombacher, M. Sweeney, A. Goswami, and T. H. Ezard. 2024b. How many specimens make a sufficient training set for automated 3D feature extraction? *Royal Society Open Science*. <https://doi.org/10.1098/rsos.240113>.
- Navalón, G., J. Marugán-Lobón, J. A. Bright, C. R. Cooney, and E. J. Rayfield. 2020. The consequences of craniofacial integration for the adaptive radiations of Darwin’s finches and Hawaiian honeycreepers. *Nature Ecology and Evolution* 4:270–278.
- Navalón, G., A. Bjarnason, E. Griffiths, and R. B. J. Benson. 2022. Environmental signal in the evolutionary diversification of bird skeletons. *Nature* 611:306–311.
- Noden, D. M. 1983. The role of the neural crest in patterning of avian cranial skeletal, connective, and muscle tissues. *Developmental Biology* 96:144–165.
- O’Meara, B. C., C. Ané, M. J. Sanderson, and P. C. Wainwright. 2006. Testing for different rates of continuous trait evolution. *Evolution* 60:922–933.
- Partha, R., B. K. Chauhan, Z. Ferreira, J. D. Robinson, K. Lathrop, K. K. Nischal, M. Chikina, and N. L. Clark. 2017. Subterranean mammals show convergent regression in ocular genes and enhancers, along with adaptation to tunneling. *eLife* 6:e25884.
- Partha, R., A. Kowalczyk, N. L. Clark, and M. Chikina. 2019. A robust method for detecting convergent shifts in evolutionary rates. *Molecular Biology and Evolution* 36:1817–1830.
- Pennell, M. W., and L. J. Harmon. 2013. An integrative view of phylogenetic comparative methods: connections to population genetics, community ecology, and paleobiology. *Annals of the New York Academy of Sciences* 1289:90–105.
- Percival, C. J., J. Devine, B. C. Darwin, W. Liu, M. van Eede, R. M. Henkelman, and B. Hallgrímsson. 2019. The effect of automated landmark identification on morphometric analyses. *Journal of Anatomy* 234:917–935.
- Pilbeam, D., and S. J. Gould. 1974. Size and scaling in human evolution. *Science* 186:892–901.
- Polly, P. D. 2023. Extinction and morphospace occupation: a critical review. *Cambridge Prisms: Extinction* 1:e17.
- Polly, P. D., and G. J. Motz. 2016. Patterns and processes in morphospace: geometric morphometrics of three-dimensional objects. *Paleontological Society Papers* 22:71–99.
- Polly, P. D., M. A. Lawing, A.-C. Fabre, and A. Goswami. 2013. Phylogenetic principal components analysis and geometric morphometrics. *Hystrix, the Italian Journal of Mammalogy* 24:1–9.
- Pomidor, B. J., J. Makedonska, and D. E. Slice. 2016. A landmark-free method for three-dimensional shape analysis. *PLoS ONE* 11:e0150368.



- Porto, A., and K. L. Voje. 2020. ML-morph: A fast, accurate and general approach for automated detection and landmarking of biological structures in images. *Methods in Ecology and Evolution* 11:500–512.
- Porto, A., F. B. de Oliveira, L. T. Shirai, V. De Conto, and G. Marroig. 2009. The evolution of modularity in the mammalian skull I: morphological integration patterns and magnitudes. *Evolutionary Biology* 36:118–135.
- Porto, A., S. Rolfe, and A. M. Maga. 2021. ALPACA: a fast and accurate computer vision approach for automated landmarking of three-dimensional biological structures. *Methods in Ecology and Evolution* 12:2129–2144.
- Price, S. A., S. T. Friedman, K. A. Corn, C. M. Martinez, O. Larouche, and P. C. Wainwright. 2019. Building a body shape morphospace of teleostean fishes. *Integrative and Comparative Biology* 59:716–730.
- Price, S. A., S. T. Friedman, K. A. Corn, O. Larouche, K. Brockelsby, A. J. Lee, M. Nagaraj, et al. 2022. FishShapes v1: functionally relevant measurements of teleost shape and size on three dimensions. *Ecology* 103:e3829.
- Puttick, M. N., T. Guillerme, and M. A. Wills. 2020. The complex effects of mass extinctions on morphological disparity. *Evolution* 74:2207–2220.
- Pybus, O. G., M. A. Suchard, P. Lemey, F. J. Bernardin, A. Rambaut, F. W. Crawford, R. R. Gray, et al. 2012. Unifying the spatial epidemiology and molecular evolution of emerging epidemics. *Proceedings of the National Academy of Sciences USA* 109:15066–15071.
- Pyron, R. A. 2011. Divergence time estimation using fossils as terminal taxa and the origins of Lissamphibia. *Systematic Biology* 60:466–481.
- Pyron, R. A. 2017. Novel approaches for phylogenetic inference from morphological data and total-evidence dating in squamate reptiles (lizards, snakes, and amphisbaenians). *Systematic Biology* 66:38–56.
- Quintero, I., and M. J. Landis. 2020. Interdependent phenotypic and biogeographic evolution driven by biotic interactions. *Systematic Biology* 69:739–755.
- Raj Pant, S., A. Goswami, and J. A. Finarelli. 2014. Complex body size trends in the evolution of sloths (Xenarthra: Pilosa). *BMC Evolutionary Biology* 14:184.
- Rau, C., S. Marathe, A. Bodey, M. Petersen, D. Batey, S. Cippicia, P. Li, and A. Goswami. 2021. Operando and high-throughput multiscale-tomography. *Proceedings of SPIE* 11840:1–10.
- Raup, D. M. 1966. Geometric analysis of shell coiling: general problems. *Journal of Paleontology* 40:1178–1190.
- Renard, S., J.-C. Auffray, and J. Michaux. 2006. Conserved phenotypic variation patterns, evolution along lines of least resistance, and departure due to selection in fossil rodents. *Evolution* 60:1701–1717.
- Revell, L. J. 2009. Size-correction and principal components for interspecific comparative studies. *Evolution* 63:3258–3268.
- Revell, L. J. 2012. phytools: an R package for phylogenetic comparative biology (and other things). *Methods in Ecology and Evolution* 3:217–223.
- Revell, L. J., and D. C. Collar. 2009. Phylogenetic analysis of the evolutionary correlation using likelihood. *Evolution* 63:1090–1100.
- Revell, L. J., and A. S. Harrison. 2008. PCCA: a program for phylogenetic canonical correlation analysis. *Bioinformatics* 24:1018–1020.
- Rhoda, D. P., A. Haber, and K. D. Angielczyk. 2023. Diversification of the ruminant skull along an evolutionary line of least resistance. *Science Advances* 9:eade8929.
- Rohlf, F. J. 1986. Relationships among eigenshape analysis, Fourier analysis, and analysis of coordinates. *Mathematical Geology* 18:845–854.
- Rohlf, F. J. 1999. Shape statistics: Procrustes superimpositions and tangent spaces. *Journal of Classification* 16:197–223.
- Rohlf, F. J., and F. L. Bookstein, eds. 1990. *Proceedings of the Michigan Morphometrics Workshop*. University of Michigan Museum of Zoology, Ann Arbor.
- Rolfe, S., S. Pieper, A. Porto, K. Diamond, J. Winchester, S. Shan, H. Kirveslahti, D. Boyer, A. Summers, and A. M. Maga. 2021. SlicerMorph: an open and extensible platform to retrieve, visualize and analyse 3D morphology. *Methods in Ecology and Evolution* 12:1816–1825.
- Ronquist, F., S. Klopfstein, L. Vilhelsen, S. Schulmeister, D. L. Murray, and A. P. Rasnitsyn. 2012. A total-evidence approach to dating fossils, applied to the early radiation of the Hymenoptera. *Systematic Biology* 61:973–999.
- Salzburger, W. 2018. Understanding explosive diversification through cichlid fish genomics. *Nature Reviews Genetics* 19:705–717.
- Sauquet, H., and S. Magallón. 2018. Key questions and challenges in angiosperm macroevolution. *New Phytologist* 219:1170–1187.
- Schlager, S. 2017. Morpho and Rvcg—shape analysis in {R}. Pp. 217–256 in G. Zheng, S. Li, and G. Székely, eds. *Statistical shape and deformation analysis: methods, implementation and applications*. Elsevier, Amsterdam.
- Schluter, D. 1996. Adaptive radiation along genetic lines of least resistance. *Evolution* 50:1766–1774.
- Sears, K. E. 2004. Constraints on the morphological evolution of marsupial shoulder girdles. *Evolution* 58:2353–2370.
- Sears, K. E., A. Goswami, J. J. Flynn, and L. A. Niswander. 2007. The correlated evolution of Runx2 tandem repeats, transcriptional activity, and facial length in Carnivora. *Evolution and Development* 9:555–565.
- Sepkoski, D., and M. Ruse. 2015. *The paleobiological revolution: essays on the growth of modern paleontology*. University of Chicago Press, Chicago.
- Sepkoski, J. J., R. K. Bambach, D. M. Raup, and J. W. Valentine. 1981. Phanerozoic marine diversity and the fossil record. *Nature* 293:435–437.
- Shen, L., H. Farid, and M. A. McPeck. 2009. Modeling three-dimensional morphological structures using spherical harmonics. *Evolution* 63:1003–1016.
- Shu, Z., S. Yang, H. Wu, S. Xin, C. Pang, L. Kavan, and L. Liu. 2022. 3D shape segmentation using soft density peak clustering and semi-supervised learning. *Computer-Aided Design* 145:103181.
- Simpson, G. G. 1944. *Tempo and mode in evolution*. Columbia University Press, New York.
- Slater, G. J. 2013. Phylogenetic evidence for a shift in the mode of mammalian body size evolution at the Cretaceous–Palaeogene boundary. *Methods in Ecology and Evolution* 4:734–744.
- Slater, G. J., and L. J. Harmon. 2013. Unifying fossils and phylogenies for comparative analyses of diversification and trait evolution. *Methods in Ecology and Evolution* 4:699–702.
- Slater, G. J., S. A. Price, F. Santini, and M. E. Alfaro. 2010. Diversity versus disparity and the radiation of modern cetaceans. *Proceedings of the Royal Society of London B* 277:3097–3104.
- Slater, G. J., L. J. Harmon, and M. E. Alfaro. 2012a. Integrating fossils with molecular phylogenies improves inference of trait evolution. *Evolution* 66:3931–3944.
- Slater, G. J., L. J. Harmon, D. Wegmann, P. Joyce, L. J. Revell, and M. E. Alfaro. 2012b. Fitting models of continuous trait evolution to incompletely sampled comparative data using approximate Bayesian computation. *Evolution* 66:752–762.
- Soul, L. C., and D. F. Wright. 2021. *Phylogenetic comparative methods: a user's guide for paleontologists*. Elements of Paleontology. Cambridge University Press, Cambridge.
- Stadler, T. 2010. Sampling-through-time in birth–death trees. *Journal of Theoretical Biology* 267:396–404.
- Stephan, S. J. 1997. Phylogenetic analysis of phenotypic covariance structure. II. Reconstructing matrix evolution. *Evolution* 51:587–594.
- Stephan, S. J., P. C. Phillips, and D. Houle. 2002. Comparative quantitative genetics: evolution of the G matrix. *Trends in Ecology and Evolution* 17:320–327.
- Stone, E. A. 2011. Why the phylogenetic regression appears robust to tree misspecification. *Systematic Biology* 60:245–260.
- Thomas, R. D. K., and W.-E. Reif. 1993. The skeleton space: a finite set of organic designs. *Evolution* 47:341–360.
- Thompson, D. W. 1917. *On growth and form*. Cambridge University Press, Cambridge.
- Tolkoff, M. R., M. E. Alfaro, G. Baele, P. Lemey, and M. A. Suchard. 2018. Phylogenetic factor analysis. *Systematic Biology* 67:384–399.
- Toulkeridou, E., C. E. Gutierrez, D. Baum, K. Doya, and E. P. Economo. 2023. Automated segmentation of insect anatomy from micro-CT images using deep learning. *Natural Sciences* 3:e20230010.
- Toussaint, N., Y. Redhead, M. Vidal-García, L. Lo Vercio, W. Liu, E. M. C. Fisher, B. Hallgrímsson, V. L. J. Tybulewicz, J. A. Schnabel, and J. B. A. Green. 2021. A landmark-free morphometrics pipeline for high-resolution phenotyping: application to a mouse model of Down syndrome. *Development* 148:dev188631.
- Troyer, E. M., R. Betancur-R., L. C. Hughes, M. Westneat, G. Carnevale, W. T. White, J. J. Pogonoski, et al. 2022. The impact of paleoclimatic changes on body size evolution in marine fishes. *Proceedings of the National Academy of Sciences USA* 119:e2122486119.

- Uyeda, J. C., D. S. Caetano, and M. W. Pennell. 2015. Comparative analysis of principal components can be misleading. *Systematic Biology* **64**:677–689.
- Uyeda, J. C., R. Zenil-Ferguson, and M. W. Pennell. 2018. Rethinking phylogenetic comparative methods. *Systematic Biology* **67**:1091–1109.
- Van Valen, L. 1973. A new evolutionary law. *Evolutionary Theory* **1**:1–30.
- Venditti, C., A. Meade, and M. Pagel. 2011. Multiple routes to mammalian diversity. *Nature* **479**:393–396.
- Wagner, G. P. 1996. Homologues, natural kinds and the evolution of modularity. *American Zoologist* **36**:36–43.
- Wagner, G. P., and L. Altenberg. 1996. Perspective: complex adaptations and the evolution of evolvability. *Evolution* **50**:967–976.
- Wainwright, P. C. 2007. Functional versus morphological diversity in macroevolution. *Annual Review of Ecology, Evolution and Systematics* **38**:381–401.
- Wang, B., T. Sudijono, H. Kirveslahti, T. Gao, D. M. Boyer, S. Mukherjee, and L. Crawford. 2019. A statistical pipeline for identifying physical features that differentiate classes of 3D shapes. *BioRxiv*:701391.
- Wang, M., and Z. Zhou. 2023. Low morphological disparity and decelerated rate of limb size evolution close to the origin of birds. *Nature Ecology and Evolution* **7**:1257–1266.
- Warton, D. I., S. T. Wright, and Y. Wang. 2012. Distance-based multivariate analyses confound location and dispersion effects. *Methods in Ecology and Evolution* **3**:89–101.
- Watanabe, A., A.-C. Fabre, R. N. Felice, J. A. Maisano, J. Müller, A. Herrel, and A. Goswami. 2019. Ecomorphological diversification in squamates from conserved pattern of cranial integration. *Proceedings of the National Academy of Sciences USA* **116**:14688–14697.
- Webster, M., and M. L. Zelditch. 2011a. Evolutionary lability of integration in Cambrian ptychoparioid trilobites. *Evolutionary Biology* **38**:144–162.
- Webster, M., and M. L. Zelditch. 2011b. Modularity of a Cambrian ptychoparioid trilobite cranidium. *Evolution and Development* **13**:96–109.
- Wesley-Hunt, G. D. 2005. The morphological diversification of carnivores in North America. *Paleobiology* **31**:35–55.
- Westerhold, T., N. Marwan, A. J. Drury, D. Liebrand, C. Agnini, E. Anagnostou, J. S. K. Barnet, et al. 2020. An astronomically dated record of Earth's climate and its predictability over the last 66 million years. *Science* **369**:1383.
- White, H. E., A. S. Tucker, V. Fernandez, R. Portela Miguez, L. Hautier, A. Herrel, D. J. Urban, K. E. Sears, and A. Goswami. 2023. Pedomorphosis in the ancestry of marsupial mammals. *Current Biology* **33**:2136–2150.e4.
- Wills, M. A., D. E. G. Briggs, and R. A. Fortey. 1994. Disparity as an evolutionary index: a comparison of Cambrian and Recent arthropods. *Paleobiology* **20**:93–130.
- Wimberly, A. N., R. Natale, R. Higgins, and G. J. Slater. 2022. Choice of 3D morphometric method leads to diverging interpretations of form–function relationships in the carnivoran calcaneus. *BioRxiv* 2022.05.16.492149.
- Wright, S. 1932. The roles of mutation, inbreeding, crossbreeding and selection in evolution. *Proceedings of the 6th International Congress of Genetics* **1**:356–366.
- Wu, J., T. Yonezawa, and H. Kishino. 2017. Rates of molecular evolution suggest natural history of life history traits and a post-K-Pg nocturnal bottleneck of placentals. *Current Biology* **27**:3025–3033.e5.
- Young, N. M., H. J. Chong, D. Hu, B. Hallgrímsson, and R. S. Marcucio. 2010. Quantitative analyses link modulation of sonic hedgehog signaling to continuous variation in facial growth and shape. *Development* **137**:3405–3409.
- Young, N. M., D. Hu, A. J. Lainoff, F. J. Smith, R. Diaz, A. S. Tucker, P. A. Trainor, R. A. Schneider, B. Hallgrímsson, and R. S. Marcucio. 2014. Embryonic bauplans and the developmental origins of facial diversity and constraint. *Development* **141**:1059–1063.
- Yuan, Y., Y. Zhang, P. Zhang, C. Liu, J. Wang, H. Gao, A. R. Hoelzel, et al. 2021. Comparative genomics provides insights into the aquatic adaptations of mammals. *Proceedings of the National Academy of Sciences USA* **118**:e2106080118.
- Zachos, F. E. 2016. A brief history of species concepts and the species problem. Pp. 17–44 in F. E. Zachos, ed. *Species concepts in biology: historical development, theoretical foundations and practical relevance*. Springer International Publishing, Cham, Switzerland.
- Zelditch, M. L., and A. Goswami. 2021. What does modularity mean? *Evolution and Development* **23**:377–403.
- Zelditch, M. L., and D. L. Swiderski. 2023. Effects of Procrustes superimposition and semilandmark sliding on modularity and integration: an investigation using simulations of biological data. *Evolutionary Biology* **50**:147–169.
- Zhang, G., C. Li, Q. Li, B. Li, D. M. Larkin, C. Lee, J. F. Storz, et al. 2014. Comparative genomics reveals insights into avian genome evolution and adaptation. *Science* **346**:1311–1320.
- Zhou, Y., L. Shearwin-Whyatt, J. Li, Z. Song, T. Hayakawa, D. Stevens, J. C. Fenelon, et al. 2021. Platypus and echidna genomes reveal mammalian biology and evolution. *Nature* **592**:756–762.