

# The evolution of hearing and brain size in Eocene whales

John Peacock<sup>1</sup> , David A. Waugh<sup>1</sup>, Sunil Bajpai<sup>2</sup> and J. G. M. Thewissen<sup>1</sup>

<sup>1</sup>Department of Anatomy and Neurobiology, Northeast Ohio Medical University, Rootstown, Ohio 44272, U.S.A.

<sup>2</sup>Department of Earth Sciences, Indian Institute of Technology, Roorkee 247667, India

## Article

**Cite this article:** Peacock, J., D. A. Waugh, S. Bajpai, and J. G. M. Thewissen (2025). The evolution of hearing and brain size in Eocene whales. *Paleobiology* **51**, 344–355. <https://doi.org/10.1017/pab.2024.64>

Received: 09 May 2024

Revised: 25 November 2024

Accepted: 10 December 2024

### Handling Editor:

Nadia Fröbisch

### Corresponding author:

John Peacock;

Email: [peacockjohn@outlook.com](mailto:peacockjohn@outlook.com)

## Abstract

Toothed whales (odontocetes) make use of high-frequency sounds to echolocate, differing significantly from their sister group baleen whales (mysticetes), which make use of low-frequency sound for long-distance communication. This divergence in auditory ability has led to considerable speculation as to how hearing functioned in the ancestral archaeocetes, and when the specializations of modern species arose. Numerous studies have attempted to infer auditory capabilities from morphological correlates valid in modern species. Here, we build upon these previous methods with a focus on cochlear structures that have well-understood links to function. We combine this with information on the sound conduction apparatus to chart the evolutionary trajectory of cetacean hearing. Our results suggest an initial move toward low-frequency specialization in early Eocene cetaceans, which coincides with the appearance of new sound conduction pathways. This paved the way for the later movement toward higher-frequency hearing in protocetids; however, the ultra-high- and low-frequency hearing specializations of both modern cetacean clades evolved after their divergence. We use these data to test the hypotheses that evolutionary brain size increases in cetaceans were related to the origin of high-frequency echolocation. We show that no shift in relative brain size coincides with any changes toward high-frequency perception. However, this does not rule out a role for other changes in hearing ability such as some simple forms of echolocation, similar to that suggested for hippopotamuses or bowhead whales, which may have been present in even the earliest cetaceans.

## Non-technical Summary

Toothed whales (e.g., orcas and sperm whales) use high-frequency sounds to echolocate, while baleen whales (e.g., humpback and bowhead whales) communicate using low-frequency sounds. Here, we build on previously established methods showing how functionally relevant features of cochlear (inner ear) morphology can help paint a robust picture of a species' hearing ability. Early Eocene cetaceans may have specialized in low-frequency hearing, which coincided with the appearance of new sound conduction pathways. This likely proved essential to the development of higher-frequency underwater hearing in protocetids and the later ultra-high-frequency echolocation of modern toothed whales. The common ancestor of modern whales likely did not possess hearing abilities similar to either of the two modern suborders. While increases in cetacean brain size do not correlate with shifts toward high-frequency hearing, we cannot rule out a lack of connection to other aspects of hearing ability, particularly echolocation. Even ancient cetaceans may have possessed the capacity for complex vocalizations and communication, as well as basic echolocation.

## Introduction

The transition from terrestrial to fully aquatic lifestyles necessitated profound changes in cetacean sensory systems. The auditory apparatus requires distinct adaptations for optimal function in water as opposed to air due to differences in the sound transmission characteristics of the two media. Modern cetaceans have not only adapted their auditory system for aquatic environments, but have become adept at using sound: odontocetes developed ultra-high-frequency hearing and sophisticated echolocation, while mysticetes developed complex low-frequency songs used for intraspecific communication.

Cetacean evolution is well documented by numerous well-preserved fossils (Thewissen et al. 2001, 2007). These show stepwise changes in the auditory system toward increasing adaptation for underwater hearing through the Eocene (Nummela et al. 2004, 2007). Many previous studies have made significant progress toward understanding cetacean auditory capabilities based on identifying morphological correlates in modern species (Fleischer 1976; Ketten 1992; Ekdale and Rowe 2011; Geisler et al. 2014; Ekdale and Racicot 2015; Churchill et al. 2016; Park et al. 2016; Mourlam and Orliac 2017; Racicot et al. 2019; Racicot 2022); however, many of the features

© The Author(s), 2025. Published by Cambridge University Press on behalf of Paleontological Society. This is an Open Access article, distributed under the terms of the Creative Commons Attribution licence (<http://creativecommons.org/licenses/by/4.0>), which permits unrestricted re-use, distribution and reproduction, provided the original article is properly cited.

**PALEOBIOLOGY**  
A PUBLICATION OF THE



**CAMBRIDGE**  
UNIVERSITY PRESS



studied do not have a direct causal connection to auditory physiology, even though they are correlated. This has led different authors to come to contradictory conclusions regarding frequency specializations, with some suggesting that late Eocene cetaceans are high-frequency specialized (Churchill et al. 2016), low-frequency specialized (Ekdale and Racicot 2015), or unspecialized (Mourlam and Orliac 2017).

Morphological features of the cochlea that do have well-defined links to function include the laminar gap and the size of Rosenthal's canal (Fig. 1). The development of the bony spiral laminae, concurrent with cochlear coiling, was an important innovation toward the evolution of high-frequency hearing in therian mammals (Ruf et al. 2009; Luo et al. 2011). These spiral laminae provide a more rigid support for the basilar membrane (on which rests the sensory epithelium). The gap between the spiral laminae (the laminar gap [Geisler and Luo 1996] or basilar gap [Fleischer 1976]) is indicative of the width of the basilar membrane and its supporting tissue, and this is directly and causally related to frequency perception. All else being equal, a wider membrane is more responsive to lower frequencies and a narrower membrane to higher frequencies. The laminar gap widens from the cochlear base to its apex and is one of the characters that gives the cochlea its tonotopic organization (Von Békésy 1960).

Rosenthal's canal (sometimes referred to as the spiral ganglion canal) is an oval tube found within the primary spiral lamina, which contains the ganglion cells. These relay signals from the inner hair cells to the cochlear nucleus. Larger canals will support more ganglion cells (Johnson et al. 2011), which will determine the ratio of ganglion cells to hair cells: a larger ratio allowing for more sophisticated processing of auditory information including improved frequency discrimination (Wever et al. 1971; Luo and Marsh 1996). A greatly enlarged canal, with a correspondingly larger number of ganglion cells, has long been noted for echolocating odontocetes (Sensor et al. 2015).

These two measures, laminar gap and Rosenthal's canal area, are therefore not only correlated to hearing ability, but a direct causal relationship is known. Thus, appropriate measurement of them could allow for well-supported interpretations of a species' hearing.

A clearer understanding of hearing in fossil cetaceans is of value in interpreting cetacean brain-size evolution. It is well known that cetaceans have large, complex brains, including the largest brain sizes in absolute terms. Many species, particularly delphinoid odontocetes, have brain sizes relative to body mass that are among the largest of all species, while mysticete whales have some of the lowest relative brain sizes. This observation has attracted considerable attention, and high-frequency echolocation has been

proposed as one of the major drivers of increased encephalization (Ridgway 1986; Ridgway and Au 2009). Different studies have drawn different conclusions on this matter, and alternative hypotheses have been proposed, for example, that encephalization was driven by increased cognitive abilities and complex social structures (Delfour and Marten 2001; Marino et al. 2007; Fox et al. 2017).

Numerous studies have made valuable contributions to understanding cetacean brain-size evolution, including the pioneering work of Marino et al. (2004), which has been built upon by various authors (e.g., Montgomery et al. 2013; Boessenecker et al. 2017; Waugh and Thewissen 2021). One major gap in our understanding is the lack of available data for some of the earliest cetaceans; thus a complete picture of encephalization across all cetaceans has not been reported. This is particularly critical in investigating whether evolutionary increase in brain size is related to the origin of high-frequency echolocation, as some evidence suggests that even the earliest odontocetes, near the Eocene/Oligocene boundary, were echolocators (Park et al. 2016).

In this study, we report measurements of the laminar gap and Rosenthal's canal in extant and fossil cetaceans, as well as a wide range of other therian mammals, to infer the hearing ability in Eocene cetaceans. We further report new measurements and analysis of Eocene cetacean brain sizes and examine these data alongside hearing ability to consider the relationship between the two. We thus present our hypothesis charting the evolutionary trajectory of cetacean hearing and brain size.

## Materials and Methods

### CT Imaging

We studied inner ear morphology using micro-computed tomography ( $\mu$ CT) imaging. Specimens were scanned using a SkyScan 1273 (Bruker, Billerica, MA, USA) with scanning parameters being optimized to achieve maximum resolution and contrast for each individual specimen. Additional scan data from previous published studies were downloaded from MorphoSource and Dryad. A list of fossil specimens and corresponding ID numbers is given in Table 1.

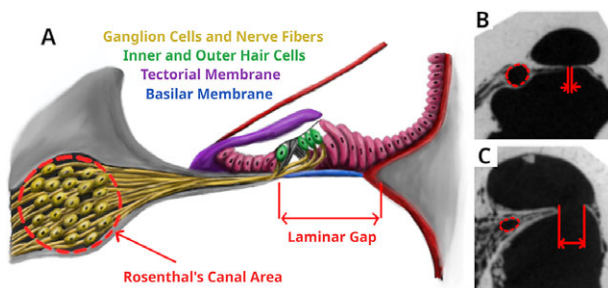
### Cochlear Morphology

For measurements of cochlear morphology, we marked the tip of the primary spiral lamina along its full length before fitting a line to this using the spline function in Avizo 3D Pro (Thermo Fisher Scientific, Waltham, MA, USA). We took the length of this line as the length of the basilar membrane.

Using the trajectory feature in Avizo, we can define slices through the data that sit perpendicular to our line. We used this to extract 50 equally spaced slices running from the cochlea's base to its apex. From each slice, we made measurements of the gap between the primary spiral lamina and the secondary spiral lamina (where present) or the wall of the cochlea (Geisler and Luo 1996), as well as the cross-sectional area of the Rosenthal's canal. If the spiral lamina was broken at any location, the value for this point was marked as missing data. All length and area data were gathered using ImageJ (Schindelin et al. 2012).

### Endocranial Volume and Body Mass

Endocranial volume was calculated from  $\mu$ CT data using Avizo 3D Pro. Specimens of *Nalacetus*, *Andrewsiphius*, *Ambulocetus*, and



**Figure 1.** Morphological measurements of the cochlea. **A**, Anatomical features of the organ of Corti with the variables we measured marked. **B** and **C**, Example CT slices in *Kogia brevicauda* and *Antilocapra americana* with the measurements marked.

**Table 1.** List of fossil specimens examined and the type of data gathered for each. Unless a different source is noted in the table, all specimens were scanned/examined specifically for this study as described in the methods. \*HGSP 99623 was identified as a juvenile *Pakicetus attocki* in Nummela et al. (2006).

Taxon	Specimen ID	Specimen description	Data used in this study
<i>Indohyus indirae</i>	RR207	Thewissen et al. 2007	Endocranial volume
<i>Nalacetus ratimitus</i>	HGSP 96386	Thewissen and Hussain 1998	Endocranial volume
<i>Ichthyolestes pinfoldi</i>	HGSP 96623*	Nummela et al. 2006	Endocranial volume
<i>Ichthyolestes pinfoldi</i>	HGSP 98134	Nummela et al. 2006	Endocranial volume
<i>Ambulocetus natans</i>	HGSP 18507	Thewissen et al. 1996	Endocranial volume
<i>Remingtonocetus harudiensis</i>	IITR/SB/2529	Bajpai et al. 2011	Cochlea
<i>Remingtonocetus harudiensis</i>	IITR/SB/2781	Bajpai et al. 2011	Cochlea
<i>Andrewsiphium sloani</i>	IITR/SB/2786	Thewissen and Bajpai 2009	Cochlea
<i>Andrewsiphium sloani</i>	IITR/SB/3153	Thewissen and Bajpai 2009	Endocranial volume
<i>Andrewsiphium sloani</i>	IITR/SB/2751	Thewissen and Bajpai 2009	Endocranial volume Cochlea
<i>Indocetus ramani</i>	LUVF 11034	Bajpai and Thewissen 2014	Mandible
<i>Indocetus ramani</i>	IITR/SB/2986	Bajpai and Thewissen 2014	Cochlea
<i>Dhedacetus hyaeni</i>	IITR/SB/2870	Bajpai and Thewissen 2014	Endocranial volume
<i>Zygorhiza kochii</i>	USNM: paleobiology: 214433	Ekdale and Racicot 2015	Cochlea from MorphoSource
<i>Atlantocetus patulus</i>	USNM: paleobiology: 23690	Kellogg 1968	Cochlea from MorphoSource
Fossil odontocete	CCNHM1000	Racicot et al. 2019	Cochlea from Dryad
Balaenopterid sp.	TMM 42958–35	Ekdale and Racicot 2015	Cochlea from MorphoSource

*Dhedacetus* were scanned using the same Skyscan 1273 (Bruker, Billerica, MA, USA) as the ears, while specimens of *Indohyus*, and *Ichthyolestes* were scanned using an EasyTom 150  $\mu$ CT scanner at the Montpellier Rio Imaging platform at the University of Montpellier (Orliac and Thewissen 2021). We digitally segmented the endocranial volume and then used the surface area volume calculation in Avizo to determine a volume. Measurements of occipital condyle width (used to estimate body mass) were made manually using calipers. Additional brain- and body-mass measurements were taken from (Waugh and Thewissen 2021).

The relationship between occipital condyle width and body mass was obtained from other published studies. As shown by Waugh and Thewissen (2021), the relationship between occipital condyle width and body mass is different for delphinoid odontocetes compared with all other whales: the equation used by Marino et al. (2004), as reported in Boessenecker et al. (2017), gives a good fit for delphinoids but not for other whales. The study by Engelman (2022) examined a large set of terrestrial mammals and found a relationship that is very similar to that from Waugh and Thewissen (2021) for non-delphinoid cetaceans. We therefore use the equations from Marino et al. (2004)/Boessenecker et al. (2017) for delphinoids, Waugh and Thewissen (2021) for non-delphinoid cetaceans, and Engelman (2022) for terrestrial species. For our new measurements on early cetaceans, we calculate body mass using both Waugh and Thewissen (2021) and Engelman (2022) (see Table 2).

### Audiogram Data

We gathered behavioral audiogram data from several published studies (Wollack 1963; Dalland 1965; Heffner and Masterton 1980; Heffner and Heffner 1985a,b, 1990, 1992, 2010; Frost and Masterton 1994; Heffner et al. 1994, 2001; Jackson et al. 1997; Koay et al. 1997, 2002; Kastak and Schusterman 1998; Gerstein et al. 1999; Flydal et al. 2001; Kastelein et al. 2002, 2009; Finneran et al. 2005; Branstetter et al. 2017). Our sample did not include audiograms acquired using evoked potentials, as these generally result in higher thresholds (Yuen et al. 2005) and are not directly comparable with behavioral data. We took the hearing range of each species to be the highest and lowest frequency it perceived at a sound pressure level of 60 dB SPL (re: 20  $\mu$ Pa). Audiograms measured underwater are normally reported with a reference value of 1  $\mu$ Pa, and water has a far greater density and acoustic impedance than air. Thus, we applied a correction subtracting 62 dB from the underwater audiogram data for greater comparability (thus data are effectively taken at 122 dB re 1  $\mu$ Pa in water). We chose to take data at 60 dB (approximately the level of normal human conversation), as this is the most common level used to define hearing range for comparative purposes.

The species chosen cover 19 family-level clades (including 8 artiodactyls, 4 carnivorans, 3 chiropterans, 2 marsupials, 1 lagomorph, 1 primate, 6 rodents, and 1 sirenian). We interpolated between measured values to find the highest and lowest frequency each species could detect at 60 dB (re: 20  $\mu$ Pa). Separate air and underwater audiograms are available for the harbor seal (*Phoca vitulina*), and we used both.

### Data Analysis and Plotting

We performed phylogenetic generalized least squares (PGLS) regression analyses on log-transformed data using the caper package (Orme 2013) in R (R Core Team 2023), with phylogenies based on Upham et al. (2019) and a simultaneous maximum-likelihood estimation of lambda. To calculate the relationship between high-frequency hearing limit and laminar gap, the data input were the mean value of the laminar gap for the basal third of the cochlea or the mean gap at the apical 10%, and both the highest and lowest audible frequency as described in the audiogram data section. The mean laminar gap for high frequencies is thus the mean of the first 17 of 50 slices (counting from base to apex), and for low frequencies it is the mean of the last 5 slices. For the brain- and body-size analysis, the data input only included extant species. The residuals

**Table 2.** New measurements on brain and body size in early Eocene cetaceans. Body mass was calculated from occipital condyle width (OCW) using the equations from Waugh and Thewissen (2021) and Engelman (2022). Brain mass was calculated from endocranial volume using the equation from Waugh and Thewissen (2021). Note that this equation overestimates the brain mass for very small volumes; this means that the relative brain size values are likely also overestimated and suggests that the increase in brain size we observed is even greater than shown in Fig. 4.

Specimen ID	Family	Binomial name	Endocranial volume (cc)	Brain mass (g)	OCW (mm)	Body mass (kg) Waugh and Thewissen (2021)	Body mass (kg) Engelman (2022)
HGSP 18507	Ambulocetidae	<i>Ambulocetus natans</i>	171	147	79.0	239.5	237.5
HGSP 96386	Pakicetidae	<i>Nalacetus ratimetus</i>	29	28	54.4	73.5	71.5
HGSP 96623	Pakicetidae	<i>Ichthyolestes pinfoldi</i>	10.4	10.7	36.0	20	18.5
HGSP 98134	Pakicetidae	<i>Ichthyolestes pinfoldi</i>	14.9	15.1	41.0	30.5	28.5
IITR/SB/2870	Protocetidae	<i>Dhedacetus hyaeni</i>	288	240	91.6	376.5	372.5
RR207	Raoellidae	<i>Indohyus indirae</i>	8.3	8.7	23.0	5	4
IITR/SB/3153	Remingtonocetidae	<i>Andrewsiphius sloani</i>	112	88.3	60	100	98
IITR/SB/2751	Remingtonocetidae	<i>Andrewsiphius sloani</i>	110.5	87.2	61.6	108.5	107

were then calculated for all specimens, including fossils, and this was taken as the relative brain size. All figures were plotted using ggplot2 (Wickham 2016) in R.

**Institutional Abbreviations.** CCNHM: Mace Brown Museum of Natural History, Charleston, SC, USA; HGSP: Howard University–Geological Survey of Pakistan, Islamabad, Pakistan; IITR-SB: Indian Institute of Technology, Roorkee/Sunil Bajpai, Roorkee, India; LUPV: Lucknow University–Vertebrate Palaeontology, Lucknow, India; RR: Rao Oberghell Trust for Geosciences, Dehradun, India; USNM: U.S. National Museum, Smithsonian Institution, Washington, DC, USA; TMM: Vertebrate Paleontology Laboratory, Jackson School of Geosciences, University of Texas at Austin, Austin, TX, USA.

## Results

### The Relationship between Laminar Gap and Hearing Ability

Our measurements show a strong, significant correlation between the mean width of the laminar gap around the cochlea's basal region and a species' highest audible frequency (Fig. 2A, Table 3). A clear difference is seen between aquatic and terrestrial species, and thus each group was treated separately when performing the regression analysis (see "Discussion"). Results for aquatic species are less significant than the results for terrestrial animals due to the lower number of available species with audiograms. A strong but less significant correlation is found between the width of the laminar gap at the apical end and the lowest audible frequency for hearing in air (Fig. 2B, Table 3).

### Laminar Gap in Artiodactyls

Width profiles of the laminar gap along the entire cochlea show that groups of modern artiodactyls are distinguishable (Fig. 3A,B). High-frequency echolocating odontocetes have a distinctly narrower laminar gap for a longer segment of the cochlea compared

with modern terrestrial artiodactyls. By contrast, low-frequency hearing mysticetes have, on average, wider laminar gaps than the terrestrial species, although the bowhead and humpback do overlap with terrestrial species near the base. Together, these morphological features allow a robust interpretation of frequency specializations during the Eocene evolution of cetaceans.

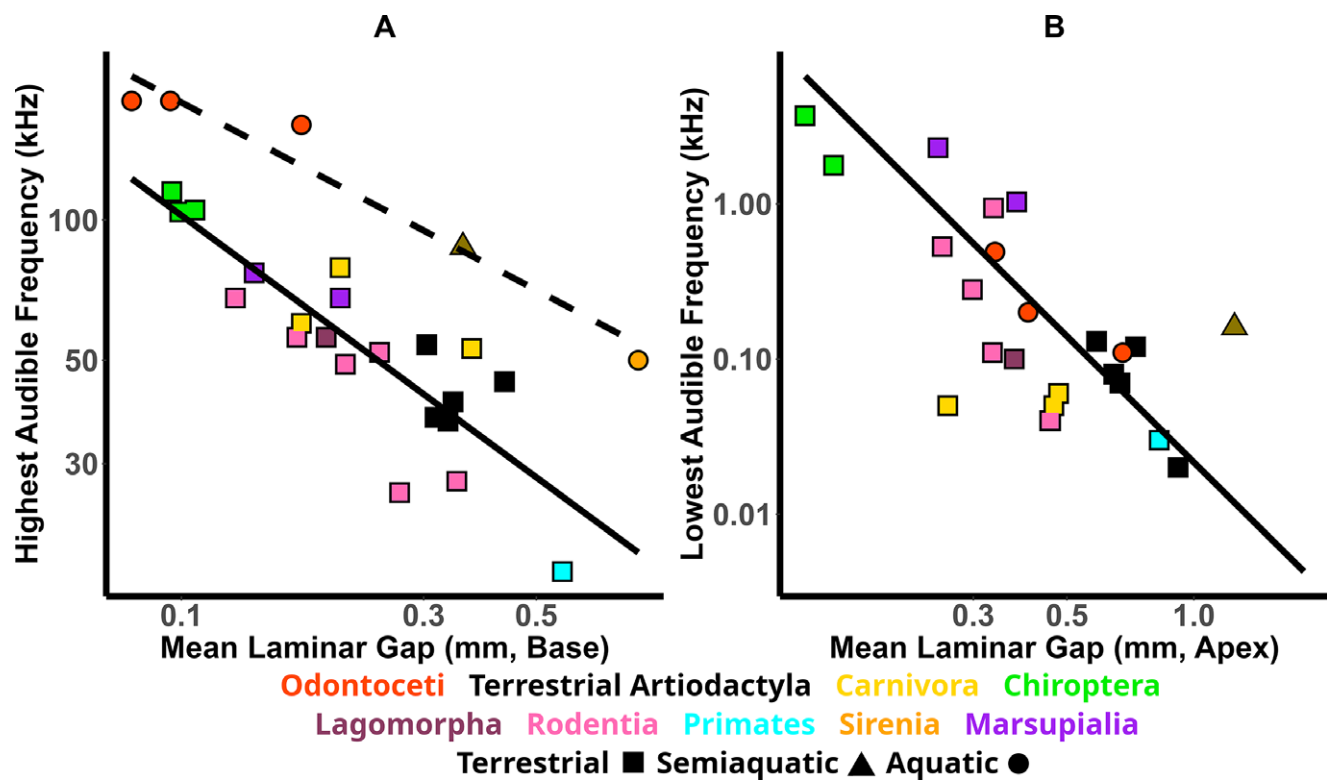
The earliest-diverging branches of the cetacean phylogenetic tree, pakicetids and ambulocetids, do not have cochleas with well-preserved laminar gaps; however, we found better preservation in the cochleas of some remingtonocetids. The basal part of the laminar gap of the remingtonocetids is wider than that of terrestrial artiodactyls (Fig. 3A,B) and similar to that of mysticetes, possibly indicating a shift toward specialization for detecting lower-frequency sounds. Thus, based on laminar gap width, the hearing ability of these species is expected to be similar to that of modern mysticetes. It must be noted that preservation in some taxa is potentially subject to errors, particularly around the basal region, which is the most easily damaged area. This would result in an overestimation of the width of the laminar gap.

Our measurements in middle and late Eocene protocetids (*Indocetus ramani*) and basilosaurids (*Zygorhiza kochii*) indicate that they also lack the high-frequency specializations found in odontocetes; for these species, the laminar gap profile bears greater similarity to that of terrestrial artiodactyls.

### Rosenthal's Canal Area

The cross-sectional area of Rosenthal's canal is largest in absolute terms in odontocetes, with the largest found in the beluga, although the humpback and bowhead compete in absolute size with many odontocetes (Fig. 3C). However, when normalized to the length of the basilar membrane (as a correction for absolute size), Rosenthal's canal areas in mysticetes, terrestrial artiodactyls, remingtonocetids, protocetids, and basilosaurids are indistinguishable, while in odontocetes this is notably larger. The exception is a basal odontocete species closely related to *Olympicetus* (red dashed line Fig. 3D).





**Figure 2.** The relationship between the laminar gap, measured from CT data, the highest audible frequency (A), and the lowest audible frequency (B), as taken from behavioral audiogram data, for a broad taxonomic sample of mammals. The solid lines show the results of the phylogenetic generalized least squares (PGLS) regressions, including terrestrial species, while the dashed line shows the results of the PGLS regression including aquatic species, and each point represents a different species. Different clades are distinguishable by color, and terrestrial and aquatic species can be distinguished by shape as indicated.

**Table 3.** Results of the phylogenetic generalized least squares (PGLS) regression analyses plotted in Fig. 2.

Highest audible frequency						
No. of species	Air/water	Intercept	Slope	$r^2$	$p$	SE
21	Air	2.66	−0.84	0.73	<0.0001	0.12
5	Water	3.72	−0.64	0.93	0.0089	0.1
Lowest audible frequency						
21	Air	−3.24	−2.07	0.96	0.13	0.42

**Brain and Body Size**

As would be expected, there is a significant correlation between body and brain mass (Fig. 4A); the PGLS regression gives a line with the equation  $y = 26.1x^{0.45}$  ( $r^2 = 0.71$ ,  $p > 0.0001$ , SE = 0.026). It should be noted that the regression analysis here is only performed on extant species, while half of the plotted data points are from measurements on fossils. As encephalization shows an overall increase over time, this results in a regression line that appears skewed compared with all the data.

Relative brain size, taken as the residuals from the regression analysis (Fig. 4B), shows remarkably small brain sizes in both pakicetids and raoellids. An initial large increase in relative brain size occurs between pakicetids and ambulocetids, where the ambulocetid brain size is similar to that of both the remingtonocetids and protocetids. A second encephalization increase is noticeable

between protocetids and basilosaurids, in which the brain size is then comparable to that of modern neocetes. A final increase in relative brain size is then seen in delphinoid odontocetes.

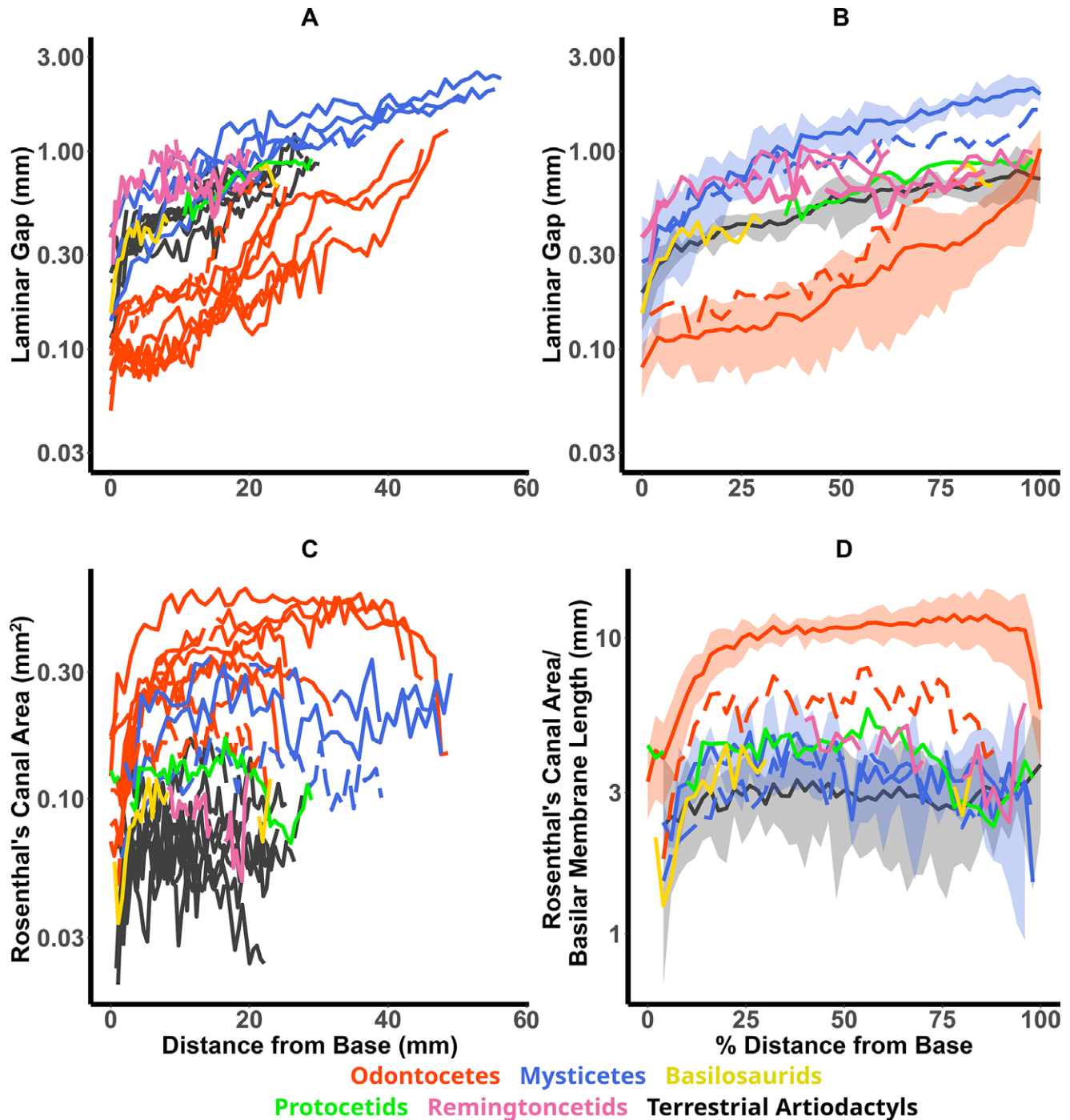
Eocene cetaceans see a significant increase in brain size but also in body size: ranging from the tiny cat-sized *Indohyus* to the gigantic *Basilosaurus*. It is clear that, as the Eocene proceeds, larger bodies and larger-brained species dominate, and both these factors combine to affect relative brain size.

Absolute brain size, body size, and relative brain size of *Indohyus* and pakicetids overlap with those of Eocene artiodactyls (Fig. 4B–D). With *Ambulocetus*, brain and body size both increase, but the former increases by a proportionally greater amount, leading to a greater relative brain size. The body sizes of the ambulocetids, remingtonocetids, protocetids, and basilosaurids in this study (which does not include *Basilosaurus*) do not appear substantially different. However, brain size does increase significantly with the basilosaurids, indicating that increased encephalization at the basilosaurid node was due to a brain-size increase alone. Basilosaurids have similar relative brain size compared with many Oligocene and Miocene odontocetes and mysticetes.

Our new measurements of endocranial volume, occipital condyle width (OCW), as well as calculated brain mass and body mass for early Eocene species, are given in Table 2.

**Mandibular Foramen**

All archaeocetes, except pakicetids, resemble modern odontocetes in some aspects of the morphology of the mandible, in which there is a large mandibular foramen (Fig. 5A,B). This enlarged foramen is present in modern odontocetes (shown in the beluga in Fig. 5C),



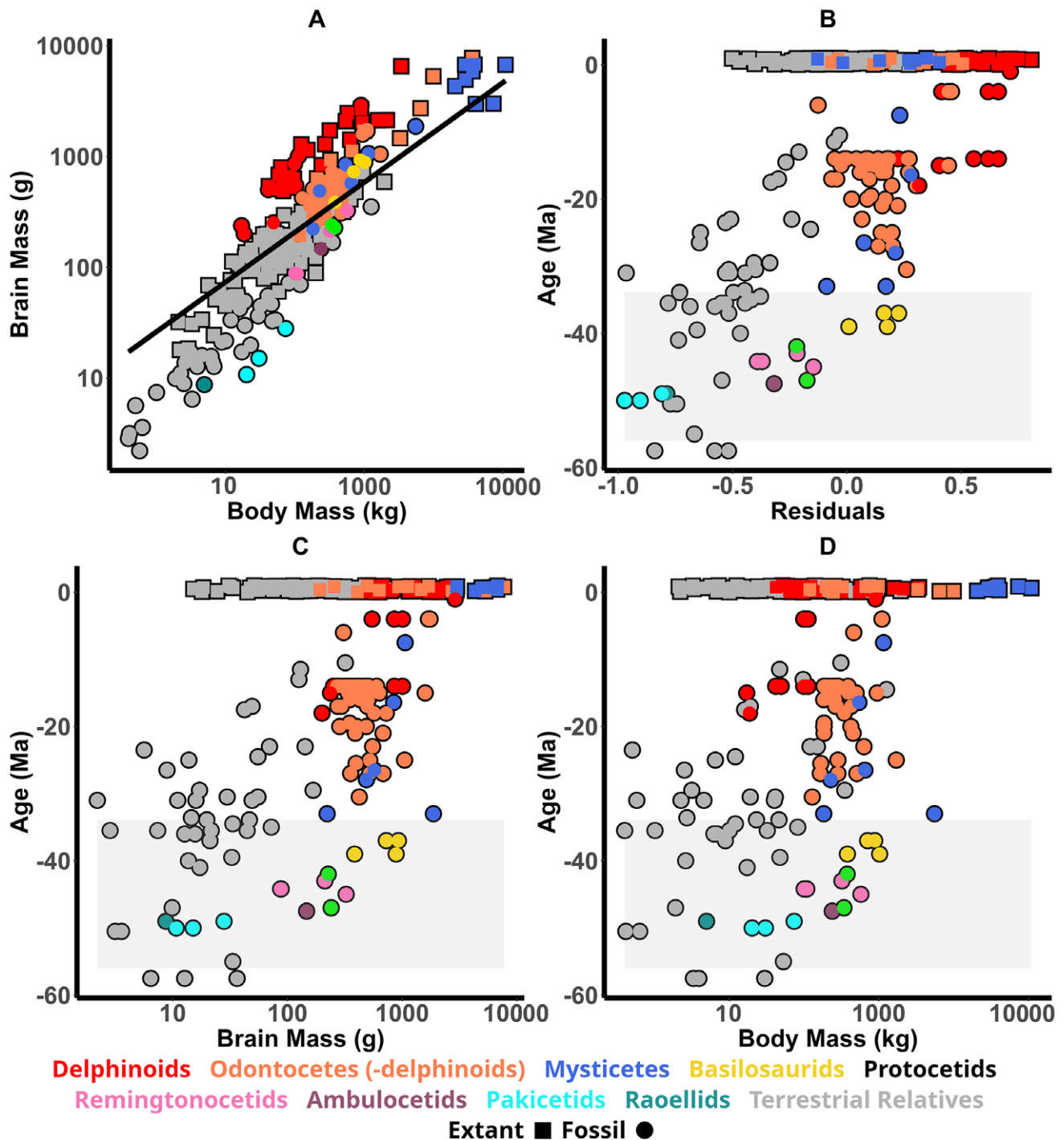
**Figure 3.** The width of the laminar gap is plotted against the absolute distance from the cochlea's base (A) and as a percentage distance from base to apex (B) for all measured artiodactyls (including cetaceans). The absolute values of Rosenthal's canal cross-sectional area against absolute distance from the base is plotted in C, while D shows the canal area normalized to basilar membrane length (as a proxy for overall size of the cochlea) against percentage distance from base to apex. Different taxa are distinguished by color. The two dashed lines represent a fossil odontocete and a fossil mysticete (see Table 1). In B and D, the mean values were calculated for extant species and plotted as a solid line, with a shaded area indicating 1 SD either side of the mean.

where it is filled with a fat pad that connects to the lateral tympanic wall. Although mysticetes have a fundamentally differently shaped mandible, their mandibular foramen is reduced compared with odontocetes but still enlarged compared with pakicetids (Fig. 5A,D). As shown in Figure 5E,F, the fat pad in the bowhead whale is relatively diminutive, and most of the foramen is filled with a vascular plexus. This is likely to be the case for other mysticetes.

## Discussion

### Estimating Hearing Thresholds from Cochlear Morphology

Our data reinforce the potential to deduce a species' hearing abilities from simple quantitative morphological features with well-defined links to function. Our broad taxonomic sample indicates that such a relationship is likely valid across all terrestrial therian mammals; however, we do find differences between aquatic and terrestrial

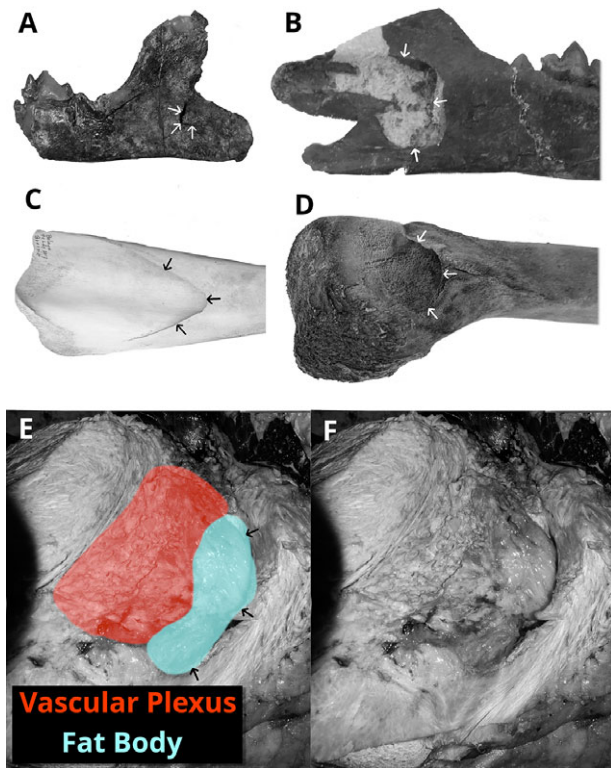


**Figure 4.** The relationship between brain size and body mass in cetaceans and their relatives. **A**, Calculated brain mass vs. body mass for all artiodactyls measured; the broken black line is the results of the phylogenetic generalized least squares (PGLS) regression analysis. **B**, The residuals from the regression analysis for each species plotted against the age of the specimen. In **B–D**, all modern species have the same value on the y-axis (0), and so in order to better distinguish individual data points, we added some jitter such that they are not exactly aligned at  $y = 0$ . In all subfigures, different groups are distinguishable by color as indicated in the legend. A shaded area is added to **B–D** to indicate the Eocene epoch.

species that complicate this analysis and require further investigation. One possibility is that similarities in sound transmission in the external and middle ear underlie this relationship, and marine mammals (particularly cetaceans) make use of different sound transmission pathways. Significant differences in sound transmission would lead to different thresholds for a given sound pressure level.

Alternatively, we note that the width of the laminar gap is far from the only factor that determines the response of hair cells.

Other features such as the thickness of the basilar membrane (e.g., Ketten *et al.* 2021), its material properties, flexing of the bony spiral lamina itself (Stenfelt *et al.* 2003; Rauber *et al.* 2019), and morphology of the scalae (Dallos 1970; Puria and Allen 1991) all play a role (among other things). In addition, molecular mechanisms in the hair cells are important in determining their ability to respond to certain frequencies (e.g., Manley 2018). Some of these features could be determined from measurements of bony morphology



**Figure 5.** The mandibular foramen in: **A**, juvenile *Ichthyolestes pinfoldi* (HGSP 96314, see description in Supplementary Material); **B**, juvenile *Indocetus ramani* (IITR-SB 2986); **C**, *Delphinapterus leucas* (NSB-HT 129); and **D**, *Balaena mysticetus fetus* (NSB-DWM 2007B16F). **E, F**, The soft tissue bodies of the mandibular foramen, remnant fat body, and vascular plexus in *Balaena mysticetus* (NSB-DWM 2014B17). Arrows indicate the edge of the mandibular foramen.

and thus could be determined in fossils. Thus, we think it is possible to produce a more refined method to quantitatively estimate hearing thresholds by incorporating other morphological elements into the model and, additionally, by including more species with audiogram data.

The applicability of these methods to fossil specimens requires extremely good preservation, which is not found in many taxa, including the earliest cetaceans and near relatives (pakicetids and raoellids). Determining other morphological correlates of hearing ability is thus important, as it is the only way to comment on potential hearing ability for many extinct species, but we would caution against overinterpreting such results unless real functional relationships can be established.

### Hearing Evolution in Eocene Cetaceans

In remingtonocetids, the anatomy of the jaw and ear region shows a broad groove that extends from the mandibular foramen to the condyle, which is medially scalloped, and continuing on the squamosal to reach the lateral tympanic (Bajpai et al. 2011). This morphology is consistent with a soft tissue connection between the lower jaw and ear region. The exact nature of the soft tissue morphology in Eocene cetaceans is unknown; these early species may not have had a fat pad as modern odontocetes do, and other types of tissue, such as a vascular plexus, could have filled this area, as in modern mysticetes (Fig. 5E,F). Regardless, it is known that this fat pad connection in modern odontocetes is the most important transducer of high-frequency sounds (Möhl et al. 1999; Popov et al. 2008).

Thus, in modern species, the fat pad is known to transmit sound at frequencies that remingtonocetids possibly could not hear (based on their wider laminar gap).

Remingtonocetids had relatively small eyes, and their fossils are found in rocks indicating a depositional environment that included marshes and coal swamps, where underwater vision was of little use. This makes it likely that hearing was their most important sense (Bajpai et al. 2011). Modern species, including odontocetes, do not appear to use the mandible pathway to hear lower frequencies in open water; instead, bone conduction mechanisms are likely sufficient (Popov et al. 2008; Cranford et al. 2010; Cranford and Krysl 2018). Remingtonocetids must then have been using the soft tissue structures in the mandibular canal to facilitate hearing in a different way (assuming the structures carried adaptive significance for hearing at all), possibly acting as an adaptation for inertial hearing of low-frequency ground vibrations.

An enlarged mandibular foramen, compared with pakicetids, occurs in *Ambulocetus natans*, where the mandible also has a direct bony articulation with the tympanic (Nummela et al. 2007; Thewissen et al. 2009). Given the similar morphological features and ecology between Ambulocetidae and Remingtonocetidae, where both occupied a similar ecological niche to extant crocodilians (Thewissen and Williams 2002), we suggest they likely possessed similar hearing ability. Thus, a shift toward lower-frequency hearing was possibly already present in ambulocetids. This has also been suggested by others based on ambulocetids having a thicker lateral wall on the mandible, and the direct bony connection with the tympanic acting as an adaptation to detect substrate vibration (Nummela et al. 2007).

The shift toward higher-frequency hearing beginning in protocetids was likely facilitated by the presence of this mandible–tympanic connection. Remingtonocetids and early protocetids had two pathways to transmit sound to the ear: one via the tympanic membrane and a second via the mandible (Nummela et al. 2004, 2007; Mourlam and Orliac 2019). The presence of this second sound transmission pathway made improved reception of underwater sound at higher frequencies possible, because a middle ear adapted for impedance transformation in air will not be effective in water, where impedance is much greater (see, e.g., Ketten et al. [2021] for further discussion). The protocetids used the mandible–soft tissue pathway for hearing in open water, as these species were active pursuit predators, as opposed to facilitating inertial hearing through ground vibrations, as in remingtonocetids. Although we have no direct evidence of the soft tissue morphology, we think it likely that the modern fat pad was present at least in the protocetids, because these are the species that begin hearing higher frequencies that would make this adaptation beneficial.

The auditory ossicles of the earliest protocetids display advanced medio-anterior rotation and the beginnings of the isolation of the ears from the skull (Nummela et al. 2004; Mourlam and Orliac 2019); in the basilosaurids, both of these features appear fully like those in modern odontocetes. The rotation of the ossicles may indicate decreasing reliance on sound transmission via the tympanic membrane, while the ear isolation is presumably an adaptation to aid in sound localization by reducing crosstalk between the two ears. The possible coincidence of the narrowing laminar gap (indicating a move toward higher-frequency hearing) and the isolation of the ears from the skull suggests that selection for improved sound localization was driving both changes.

Our results indicate that the sister group to modern Neoceti was not specialized for high-frequency hearing as in modern Odontoceti; however, it was also not specialized for hearing lower frequencies as



in modern Mysticeti. Thus, our data support the conclusions of Fleischer (1976), Mourlam and Orliac (2017), and others that the move toward both high-frequency and low-frequency hearing in modern whales occurred after the divergence of the modern suborders. The ancestral neocete has a fully modern outer and middle ear: the external auditory meatus is lost, the ossicles are fully rotated, the ears are isolated from the skull, and it likely possessed a functional mandibular fat pad.

While all our measured odontocetes display a narrow laminar gap consistent with high-frequency hearing, we do note a smaller Rosenthal's canal area in a basal odontocete closely related to *Olympicetus* (Fig. 3D). This specimen has a laminar gap profile similar to that of the orca but a smaller Rosenthal's canal area, suggesting poorer ability to discriminate between frequencies and extract sophisticated information. Other studies of cochlear morphology in this specimen have suggested that the species did not echolocate (Racicot et al. 2019) and, while our data supports that it likely could not echolocate with the same sophistication as modern odontocetes, the suggestion that it did not engage in any form of active echolocation is not supported (see also later discussion).

The diminutive fat pad seen in the bowhead (Fig. 5D–F) is unlikely to be involved in sound transmission. This loss of the fat pad (or soft tissue connection), is documented in fossils that show early mysticetes having an enlarged foramen similar to that of modern odontocetes (Steeman 2009; Bisconti and Carnevale 2022). Thus, the sound transmission pathway that emerged in ambulocetids appears to have been mostly lost in mysticetes as they shifted toward lower-frequency hearing. The exact sound transmission pathways of modern mysticetes remain poorly understood, and they may still make use of other fat bodies for sound transmission (Yamato et al. 2012).

Many early mysticetes were not large bodied, and we think it unlikely that their enlarged laminar gap can be attributed to increased body sizes alone. Indeed, previous studies have also suggested that low-frequency hearing predates large body sizes (Park et al. 2017). We hypothesize that low-frequency hearing was driven by the development of complex vocalizations used for long-distance, intraspecific communication (Edds-Walton 1997; Noad et al. 2000; Allen et al. 2022; Elemans et al. 2024), and that this was possibly facilitated by the development of filter feeding, which reduced pressure to maintain accurate sound localization abilities.

In summary, we propose that: the sound conduction pathway through the mandible originated as a low-frequency pathway for detecting substrate vibrations in Eocene cetaceans similar to ambulocetids; that this later played an essential role in facilitating higher-frequency hearing and improved sound localization beginning with protocetids and developing toward ultra-high-frequency hearing in odontocetes; and that it was lost in mysticetes as they adapted toward filter feeding, diminishing the need for accurate sound localization abilities, and developed their low-frequency intraspecific communication.

### Brain Size, High-Frequency Hearing, and Echolocation

It has been hypothesized that high-frequency echolocation was a major factor in driving brain-size increases in cetacean evolution (Ridgway 1986; Ridgway and Au 2009). Our new estimates of brain size of the earliest-diverging branches on the cetacean phylogenetic tree indicate a previously unrecognized encephalization increase at the ambulocetid node of the cladogram. This coincides with the development of low-frequency bone conduction or inertial hearing through the mandible, although we do not claim that there is a

definite causal relation. Other increases in relative brain size occurred at the basilosaurid node and, in the Miocene, in delphinoid odontocetes. Neither of these appear to coincide with any major shift in hearing specialization. We find no increase in relative brain size at the origin of odontocetes, near the Eocene/Oligocene boundary, at which time high-frequency echolocation may have already evolved (Geisler et al. 2014; Churchill et al. 2016; Park et al. 2016; Racicot et al. 2019). Thus, it is unlikely that high-frequency hearing was a primary driver of increased encephalization.

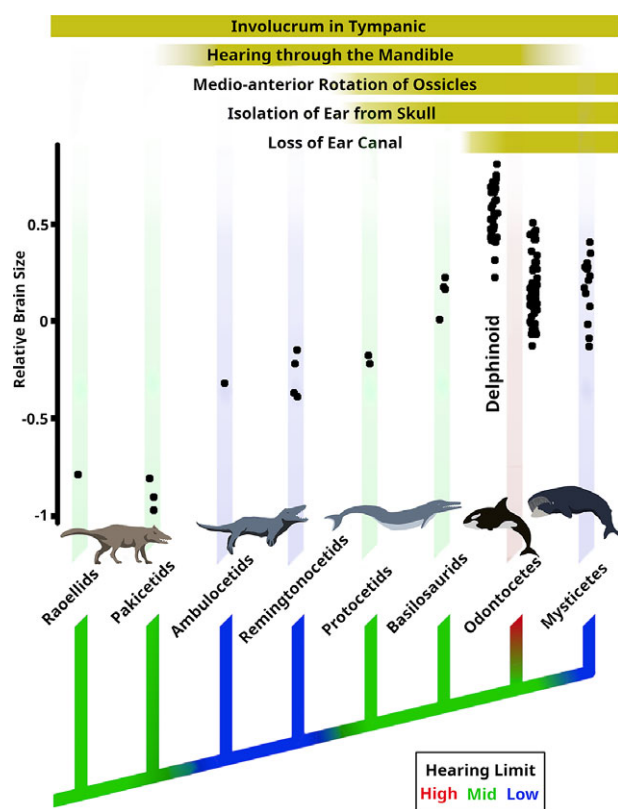
However, while periods of increasing encephalization do not correlate with high-frequency hearing, this does not imply an absence of correlation with echolocation. Modern odontocete echolocation depends on high-frequency sound reception and vocalization, but a less sophisticated form is possible, and some intermediate forms must have been present at least in earlier odontocetes. Simpler forms of echolocation can be effective for different tasks, and low-frequency echolocation is known in various bird (Brinkløv et al. 2017) and mammal (Siemers et al. 2009) species. Indeed, it has been suggested that a rudimentary form of echolocation with low-frequency click trains occurs in hippopotamuses (Maust-Mohl et al. 2018), the extant sister group to cetaceans, and in mysticete whales such as the bowhead (Clark and Ellison 2004).

Complex communication vocalizations occur in early-diverging members of the two modern suborders of cetaceans: for example, the codas of sperm whales (Andreas et al. 2022) and the songs of humpback and bowhead whales (Elemans et al. 2024). While the acoustic properties of these signals are very different, both serve as intraspecific communication. Hippopotamuses vocalize loudly above- and underwater to communicate with group members, warn non-group members, and mark territories (Barklow 1997, 2004; Thévenet et al. 2022). Thus, the three modern end-members of interest (mysticetes, odontocetes, and hippos) all have complex acoustic communication behaviors. This does not suggest that such communication is ancestral to this clade, but perhaps that such traits have a high evolvability in this lineage. This makes it possible that Eocene relatives of cetaceans and hippos also displayed complex vocalization behaviors, potentially indicating that they could produce the vocalizations necessary for some forms of primitive echolocation. However, whether or not they were echolocating cannot be determined from current data.

Thus, while we find no strong evidence of a link between encephalization and echolocation, determining whether a species was actively echolocating is a difficult task. We may be able to rule out sophisticated echolocation as in modern odontocetes based on the sort of morphological data presented here, but the presence or absence of less sophisticated echolocation cannot be determined. Most species can localize sound to some degree, and to be actively echolocating only requires that a species can produce some sounds that it can subsequently extract spatial information from. Changes in how the animal is processing and making use of sound are not always reflected in changes to frequency perception, and we cannot rule that other aspects of auditory processing, including some forms of echolocation or social communication, may yet have been drivers of increased encephalization in cetaceans.

### Conclusion: The Evolutionary Trajectory of Cetacean Hearing and Brain Size

Our hypothesis on the evolutionary changes in cetacean hearing and brain size is illustrated in Figure 6. No well-preserved cochleas



**Figure 6.** Charting the evolution of cetacean hearing and brain size from the raoellid *Indohyus* (~48 Ma) through the basilosaurid *Zygorhiza* (~36 Ma) to modern-day species. A cladogram is colored to illustrate changes in the upper limit of hearing. Morphological changes in the outer and middle ear are indicated at the top.

were available for raoellids, pakicetids, or ambulocetids, and thus our estimates here are based on similarities (or dissimilarities) in other morphological features and ecology with other species. We suspect the raoellids and pakicetids had hearing abilities similar to those of modern terrestrial artiodactyls: there are no morphological features indicating any specialization, and they had a much more terrestrial lifestyle compared with later cetaceans. This hypothesis could be tested if better preserved cochleas can be found for these species.

The Eocene epoch encompassed many critical changes in both brain size and morphological ear evolution. Notable shifts in hearing took place at three nodes of the phylogenetic tree, likewise for brain size, which shows three notable periods of increased encephalization (Fig. 6). However, changes in these systems do not always align.

Shifts in brain size and possibly hearing ability occur simultaneously at the ambulocetid node, coinciding with the entry of cetaceans into shallow, marine waters. The occurrence of the hearing shift is based on the wider laminar gap (observed in remingtonocetids) and the enlarged mandibular foramen (observed in ambulocetids and remingtonocetids), which all suggest a move toward low-frequency hearing. These species were ambush predators: they were likely listening for low-frequency ground vibrations of approaching prey, and hearing was likely their primary sense organ.

The second shift in hearing occurred at the protocetid node, where the laminar gap narrows, indicating a move to higher-frequency hearing in the range of modern terrestrial artiodactyls. However, the sound path differs; these higher frequencies are now received primarily through the mandibular route in water. This change does not coincide with any brain-size changes.

The second increase in brain size occurs at the basilosaurid node. It is at this node that whales become fully aquatic and their ears become fully isolated from the skull as in modern species, consistent with improved sound localization ability. However, even though the second increase in brain size does coincide with the improvement in localization ability, this does not include high-frequency perception of the kind found in modern odontocetes. Thus, this change does not coincide with any shift in frequency perception.

The third major shift in hearing occurs after the divergence of Neoceti, where the Odontoceti built upon preexisting sound localization ability by adding ultra-high-frequency sound reception to develop refined echolocation. Meanwhile, the Mysticeti reverted back to lower-frequency hearing, losing the fat pad in the mandible, but retaining and developing complex vocal behaviors. There is no brain-size increase that accompanies the origin of sophisticated echolocation in Odontoceti.

The third increase in brain size occurs in delphinoid odontocetes in the Miocene. The hearing and echolocation abilities of these delphinoids is not notably improved over those of other modern odontocetes, and this encephalization event is likely not connected with hearing or echolocation.

**Acknowledgments.** We would like to thank L. Cook, B. Gragg, M. Kline, K. Mars, A. Rautela, S. Usip, and B. White for their technical support; C. Gabrielle for providing the humpback ear; and L. Wild for providing the orca. We further thank the Inupiat people of Utqiagvik and Point Lay, the Alaska Eskimo Whaling Commission, and the Alaska Beluga Whaling Committee for granting us access to their specimens, with thanks to C. George, R. Suydam, and R. Stimmelmayer. Samples of bowhead and beluga were collected under permit NOAA-NMFS 17350-02 to T. Hepa. We thank the personnel of the Geological Survey of Pakistan and the Indian Institute of Technology, Roorkee, India, for help with fieldwork. Creation of datasets accessed on MorphoSource was made possible by the following grant: NSF DBI-1902242. The files were downloaded from [www.MorphoSource.org](http://www.MorphoSource.org), Duke University. Funding for this research was provided by the Hennecke Family Foundation and the National Science Foundation Grant EAR-2142526 to J.G.M.T. S.B. received funding from the Department of Science and Technology, Government of India, and IITR Chair Professorship grants for part of this research. Finally, we thank N. Fröbisch, P. Li, Z.-X. Luo, M. Mourlam, R. Racicot, and M. Uhen for their contribution to the peer review of this work. All figures in this paper were produced entirely by the lead author.

**Competing Interests.** None of the authors have any conflict of interest.

**Data Availability Statement.** Data available from the Dryad Digital Repository: <https://doi.org/10.5061/dryad.sf7m0cgh1>. All data used to support the findings of this study are included in the article and Supplementary Material. Data can be provided in other formats on request.

## Literature Cited

- Allen, J. A., E. C. Garland, C. Garrigue, R. A. Dunlop, and M. J. Noad. 2022. Song complexity is maintained during inter-population cultural transmission of humpback whale songs. *Scientific Reports* 12:8999.
- Andreas, J., G. Beguš, M. M. Bronstein, R. Diamant, D. Delaney, S. Gero, S. Goldwasser, et al. 2022. Toward understanding the communication in sperm whales. *iScience* 25:104393.
- Bajpai, S., and J. Thewissen. 2014. Protocetid cetaceans (Mammalia) from the Eocene of India. *Palaeontologia Electronica* 17:17.3.34A.
- Bajpai, S., J. G. M. Thewissen, and R. W. Conley. 2011. Cranial anatomy of middle Eocene *Remingtonocetus* (Cetacea, Mammalia) from Kutch, India. *Journal of Paleontology* 85:703–718.
- Barklow, W. E. 1997. Some underwater sounds of the hippopotamus (*Hippopotamus amphibius*). *Marine and Freshwater Behaviour and Physiology* 29: 237–249.

- Barklow, W. E. 2004. Amphibious communication with sound in hippos, *Hippopotamus amphibius*. *Animal Behaviour* **68**:1125–1132.
- Bisconti, M., and G. Carnevale. 2022. Skeletal transformations and the origin of baleen whales (Mammalia, Cetacea, Mysticeti): a study on evolutionary patterns. *Diversity* **14**:221.
- Boessenecker, R. W., E. Ahmed, and J. H. Geisler. 2017. New records of the dolphin *Albertocetus meffordorum* (Odontoceti: Xenorophidae) from the lower Oligocene of South Carolina: encephalization, sensory anatomy, post-cranial morphology, and ontogeny of early odontocetes. *PLoS ONE* **12**: e0186476.
- Branstetter, B. K., J. St Leger, D. Acton, J. Stewart, D. Houser, J. J. Finneran, and K. Jenkins. 2017. Killer whale (*Orcinus orca*) behavioral audiograms. *Journal of the Acoustical Society of America* **141**:2387.
- Brinklov, S., C. P. H. Elemans, and J. M. Ratcliffe. 2017. Oilbirds produce echolocation signals beyond their best hearing range and adjust signal design to natural light conditions. *Royal Society Open Science* **4**:170255.
- Churchill, M., M. Martinez-Caceres, C. de Muizon, J. Mnieckowski, and J. H. Geisler. 2016. The origin of high-frequency hearing in whales. *Current Biology* **26**:2144–2149.
- Clark, C. W., and W. T. Ellison. 2004. Potential use of low-frequency sound by baleen whales for probing the environment: evidence from models and empirical measurements. Pp. 564–581 in J. A. Thomas, C. F. Moss, and M. Vater, eds. *Echolocation in bats and dolphins*. University of Chicago Press, Chicago.
- Cranford, T., and P. Krysl. 2018. Sound paths, Cetaceans. Pp. 901–904 in B. Würsig, J. G. M. Thewissen, and K. M. Kovacs, eds. *Encyclopedia of marine mammals*, 3<sup>rd</sup> ed. Academic Press, San Diego.
- Cranford, T. W., P. Krysl, and M. Amundin. 2010. A new acoustic portal into the odontocete ear and vibrational analysis of the tympanoperiotic complex. *PLoS ONE* **5**:e11927.
- Dalland, J. I. 1965. Hearing sensitivity in bats. *Science* **150**:1185–1186.
- Dallos, P. 1970. Low-frequency auditory characteristics: species dependence. *Journal of the Acoustical Society of America* **48**:489–499.
- Delfour, F., and K. Marten. 2001. Mirror image processing in three marine mammal species: killer whales (*Orcinus orca*), false killer whales (*Pseudorca crassidens*) and California sea lions (*Zalophus californianus*). *Behavioural Processes* **53**:181–190.
- Edds-Walton, P. L. 1997. Acoustic communication signals of mysticete whales. *Bioacoustics* **8**:47–60.
- Ekdale, E. G., and R. A. Racicot. 2015. Anatomical evidence for low frequency sensitivity in an archaeocete whale: comparison of the inner ear of *Zygorhiza kochii* with that of crown Mysticeti. *Journal of Anatomy* **226**:22–39.
- Ekdale, E. G., and T. Rowe. 2011. Morphology and variation within the bony labyrinth of zhelestids (Mammalia, Eutheria) and other therian mammals. *Journal of Vertebrate Paleontology* **31**:658–675.
- Elemans, C. P. H., W. Jiang, M. H. Jensen, H. Pichler, B. R. Mussman, J. Nattestad, M. Wahlberg, X. Zheng, Q. Xue, and W. T. Fitch. 2024. Evolutionary novelties underlie sound production in baleen whales. *Nature* **627**: 123–129.
- Engelman, R. K. 2022. Occipital condyle width (OCW) is a highly accurate predictor of body mass in therian mammals. *BMC Biology* **20**:37.
- Finneran, J. J., D. A. Carder, R. Dear, T. Belting, J. McBain, L. Dalton, and S. H. Ridgway. 2005. Pure tone audiograms and possible aminoglycoside-induced hearing loss in belugas (*Delphinapterus leucas*). *Journal of the Acoustical Society of America* **117**:3936–3943.
- Fleischer, G. 1976. Hearing in extinct cetaceans as determined by cochlear structure. *Journal of Paleontology* **50**:133–152.
- Flydal, K., A. Hermansen, P. S. Enger, and E. Reimers. 2001. Hearing in reindeer (*Rangifer tarandus*). *Journal of Comparative Physiology A, Sensory, Neural, and Behavioral Physiology* **187**:265–269.
- Fox, K. C. R., M. Muthukrishna, and S. Shultz. 2017. The social and cultural roots of whale and dolphin brains. *Nature Ecology and Evolution* **1**:1699–1705.
- Frost, S. B., and R. B. Masterton. 1994. Hearing in primitive mammals: *Monodelphis domestica* and *Marmosa elegans*. *Hearing Research* **76**:67–72.
- Geisler, J. H., and Z. Luo. 1996. The petrosal and inner ear of *Herpetocetus* sp. (Mammalia: Cetacea) and their implications for the phylogeny and hearing of archaic mysticetes. *Journal of Paleontology* **70**:1045–1066.
- Geisler, J. H., M. W. Colbert, and J. L. Carew. 2014. A new fossil species supports an early origin for toothed whale echolocation. *Nature* **508**:383–386.
- Gerstein, E. R., L. Gerstein, S. E. Forsythe, and J. E. Blue. 1999. The underwater audiogram of the West Indian manatee (*Trichechus manatus*). *Journal of the Acoustical Society of America* **105**:3575–3583.
- Heffner, H., and H. E. Heffner. 2010. The behavioral audiogram of whitetail deer (*Odocoileus virginianus*). *Journal of the Acoustical Society of America* **127**:EL111–EL114.
- Heffner, H., and B. Masterton. 1980. Hearing in glires: domestic rabbit, cotton rat, feral house mouse, and kangaroo rat. *Journal of the Acoustical Society of America* **68**:1584–1599.
- Heffner, H. E., and R. S. Heffner. 1985a. Hearing in two cricetid rodents: wood rat (*Neotoma floridana*) and grasshopper mouse (*Onychomys leucogaster*). *Journal of Comparative Psychology* **99**:275–288.
- Heffner, H. E., R. S. Heffner, C. Contos, and T. Ott. 1994. Audiogram of the hooded Norway rat. *Hearing Research* **73**:244–247.
- Heffner, R. S., and H. E. Heffner. 1985b. Hearing range of the domestic cat. *Hearing Research* **19**:85–88.
- Heffner, R. S., and H. E. Heffner. 1990. Hearing in domestic pigs (*Sus scrofa*) and goats (*Capra hircus*). *Hearing Research* **48**:231–240.
- Heffner, R. S., and H. E. Heffner. 1992. Hearing in large mammals: sound-localization acuity in cattle (*Bos taurus*) and goats (*Capra hircus*). *Journal of Comparative Psychology* **106**:107–113.
- Heffner, R. S., G. Koay, and H. E. Heffner. 2001. Audiograms of five species of rodents: implications for the evolution of hearing and the perception of pitch. *Hearing Research* **157**:138–152.
- Jackson, L. L., H. E. Heffner, and R. S. Heffner. 1997. Audiogram of the fox squirrel (*Sciurus niger*). *Journal of Comparative Psychology* **111**:100–104.
- Johnson, S. B., H. M. Schmitz, and P. A. Santi. 2011. TSLIM imaging and a morphometric analysis of the mouse spiral ganglion. *Hearing Research* **278**: 34–42.
- Kastak, D., and R. J. Schusterman. 1998. Low-frequency amphibious hearing in pinnipeds: methods, measurements, noise, and ecology. *Journal of the Acoustical Society of America* **103**:2216–2228.
- Kastelein, R., P. Wensveen, L. Hoek, W. Verboom, and J. Terhune. 2009. Underwater detection of tonal signals between 0.125 and 100 kHz by harbor seals (*Phoca vitulina*). *Journal of the Acoustical Society of America* **125**: 1222–1229.
- Kastelein, R. A., P. Bunskoek, M. Hagedoorn, W. W. L. Au, and D. de Haan. 2002. Audiogram of a harbor porpoise (*Phocoena phocoena*) measured with narrow-band frequency-modulated signals. *Journal of the Acoustical Society of America* **112**:334–344.
- Kellogg, R. 1968. Fossil marine mammals from the Miocene Calvert Formation of Maryland and Virginia, parts 5–8. *Bulletin of the United States National Museum* **247**.
- Ketten, D. R. 1992. The marine mammal ear: specializations for aquatic audition and echolocation. Pp. 717–750 in D. B. Webster, A. N. Popper, and R. R. Fay, eds. *The evolutionary biology of hearing*. Springer, New York.
- Ketten, D. R., J. A. Simmons, H. Riquimaroux, and A. M. Simmons. 2021. Functional analyses of peripheral auditory system adaptations for echolocation in air vs. water. *Frontiers in Ecology and Evolution* **9**:661216.
- Koay, G., H. E. Heffner, and R. S. Heffner. 1997. Audiogram of the big brown bat (*Eptesicus fuscus*). *Hearing Research* **105**:202–210.
- Koay, G., K. S. Bitter, H. E. Heffner, and R. S. Heffner. 2002. Hearing in American leaf-nosed bats. I: *Phyllostomus hastatus*. *Hearing Research* **171**:96–102.
- Luo, Z., and K. Marsh. 1996. Petrosal (periotic) and inner ear of a Pliocene kogiine whale (*Kogiinae*, *Odontoceti*): implications on relationships and hearing evolution of toothed whales. *Journal of Vertebrate Paleontology* **16**: 328–348.
- Luo, Z.-X., I. Ruf, J. A. Schultz, and T. Martin. 2011. Fossil evidence on evolution of inner ear cochlea in Jurassic mammals. *Proceedings of the Royal Society B* **278**:28–34.
- Manley, G. A. 2018. The foundations of high-frequency hearing in early mammals. *Journal of Mammalian Evolution* **25**:155–163.
- Marino, L., D. W. McShea, and M. D. Uhen. 2004. Origin and evolution of large brains in toothed whales. *Anatomical Record A, Discoveries in Molecular, Cellular, and Evolutionary Biology* **281**:1247–1255.



- Marino, L., R. C. Connor, R. E. Fordyce, L. M. Herman, P. R. Hof, L. Lefebvre, D. Lusseau, et al. 2007. Cetaceans have complex brains for complex cognition. *PLoS Biology* 5:e139.
- Maust-Mohl, M., J. Soltis, and D. Reiss. 2018. Underwater click train production by the hippopotamus (*Hippopotamus amphibius*) suggests an echolocation function. *Behaviour* 155:231–251.
- Möhl, B., W. Au, J. Pawloski, and P. Nachtigall. 1999. Dolphin hearing: relative sensitivity as a function of point of application of a contact sound source in the jaw and head region. *Journal of the Acoustical Society of America* 105:3421–3424.
- Montgomery, S. H., J. H. Geisler, M. R. McGowen, C. Fox, L. Marino, and J. Gatesy. 2013. The evolutionary history of cetacean brain and body size. *Evolution: International Journal of Organic Evolution* 67:3339–3353.
- Mourlam, M. J., and M. J. Orliac. 2017. Infrasonic and ultrasonic hearing evolved after the emergence of modern whales. *Current Biology* 27:1776–1781.e9.
- Mourlam, M. J., and M. J. Orliac. 2019. Early evolution of the ossicular chain in Cetacea: into the middle ear gears of a semi-aquatic protocetid whale. *Proceedings of the Royal Society B* 286:20191417.
- Noad, M. J., D. H. Cato, M. M. Bryden, M. N. Jenner, and K. C. Jenner. 2000. Cultural revolution in whale songs. *Nature* 408:537.
- Nummela, S., J. G. M. Thewissen, S. Bajpai, S. T. Hussain, and K. Kumar. 2004. Eocene evolution of whale hearing. *Nature* 430:776–778.
- Nummela, S., S. T. Hussain, and J. G. M. Thewissen. 2006. Cranial anatomy of Pakicetidae (Cetacea, Mammalia). *Journal of Vertebrate Paleontology* 26:746–759.
- Nummela, S., J. G. M. Thewissen, S. Bajpai, T. Hussain, and K. Kumar. 2007. Sound transmission in archaic and modern whales: anatomical adaptations for underwater hearing. *Anatomical Record* 290:716–733.
- Orliac, M. J., and J. G. M. Thewissen. 2021. The endocranial cast of *Indohyus* (Artiodactyla, Raoellidae): the origin of the cetacean brain. *Journal of Mammalian Evolution* 28:831–843.
- Orme, D. 2013. The caper package: comparative analysis of phylogenetics and evolution in R. <https://mirror.rcg.sfu.ca/mirror/CRAN/web/packages/caper/vignettes/caper.pdf>, accessed 28 February 2024.
- Park, T., E. M. G. Fitzgerald, and A. R. Evans. 2016. Ultrasonic hearing and echolocation in the earliest toothed whales. *Biology Letters* 12.
- Park, T., A. R. Evans, S. J. Gallagher, and E. M. G. Fitzgerald. 2017. Low-frequency hearing preceded the evolution of giant body size and filter feeding in baleen whales. *Proceedings of the Royal Society B* 284:20162528.
- Popov, V. V., A. Y. Supin, V. O. Klishin, M. B. Tarakanov, and M. G. Pletenko. 2008. Evidence for double acoustic windows in the dolphin, *Tursiops truncatus*. *Journal of the Acoustical Society of America* 123:552–560.
- Puria, S., and J. Allen. 1991. A parametric study of cochlear input impedance. *Journal of the Acoustical Society of America* 89:287–309.
- Racicot, R. 2022. Evolution of whale sensory ecology: frontiers in nondestructive anatomical investigations. *Anatomical Record* 305:736–752.
- Racicot, R. A., R. W. Boessenecker, S. A. F. Darroch, and J. H. Geisler. 2019. Evidence for convergent evolution of ultrasonic hearing in toothed whales (Cetacea: Odontoceti). *Biology Letters* 15:20190083.
- Raufer, S., J. J. Guinan Jr, and H. H. Nakajima. 2019. Cochlear partition anatomy and motion in humans differ from the classic view of mammals. *Proceedings of the National Academy of Sciences USA* 116:13977–13982.
- R Core Team. 2023. *R: a language and environment for statistical computing*. R Foundation for Statistical Computing, Vienna, Austria.
- Ridgway, S., and W. Au. 2009. Hearing and echolocation in dolphins. In L. R. Squire, ed. *Encyclopedia of neuroscience* 4:1031–1039.
- Ridgway, S. H. 1986. Physiological observations on dolphin brains. Pp. 31–59 in *Dolphin cognition and behavior*. Psychology Press. In: R. H. Schusterman, J. A. Thomas, F. G. Wood, eds. *Dolphin cognition and behavior: a comparative approach*. Erlbaum, Hillsdale, N.J.
- Ruf, I., Z.-X. Luo, J. R. Wible, and T. Martin. 2009. Petrosal anatomy and inner ear structures of the Late Jurassic Henkelotherium (Mammalia, Cladotheria, Dryolestidae): insight into the early evolution of the ear region in cladotherian mammals. *Journal of Anatomy* 214:679–693.
- Schindelin, J., I. Arganda-Carreras, E. Frise, V. Kaynig, M. Longair, T. Pietzsch, S. Preibisch, et al. 2012. Fiji: an open-source platform for biological-image analysis. *Nature Methods* 9:676–682.
- Sensor, J. D., R. Suydam, J. C. George, M. C. Liberman, D. Lovano, M. A. Rhaganti, S. Usip, C. J. Vinyard, and J. G. M. Thewissen. 2015. The spiral ganglion and Rosenthal's canal in beluga whales. *Journal of Morphology* 276:1455–1466.
- Siemers, B. M., G. Schauerhmann, H. Turni, and S. von Merten. 2009. Why do shrews twitter? Communication or simple echo-based orientation. *Biology Letters* 5:593–596.
- Steeman, M. E. 2009. A new baleen whale from the Late Miocene of Denmark and early mysticete hearing. *Palaeontology* 52:1169–1190.
- Stenfelt, S., S. Puria, N. Hato, and R. L. Goode. 2003. Basilar membrane and osseous spiral lamina motion in human cadavers with air and bone conduction stimuli. *Hearing Research* 181:131–143.
- Thévenet, J., N. Grimault, P. Fonseca, and N. Mathevon. 2022. Voice-mediated interactions in a megaherbivore. *Current Biology* 32:R70–R71.
- Thewissen, J., S. Madar, and S. Hussain. 1996. *Ambulocetus natans*, an Eocene cetacean (Mammalia) from Pakistan. Senckenbergische Naturforschende Gesellschaft, Frankfurt am Main.
- Thewissen, J. G., E. M. Williams, L. J. Roe, and S. T. Hussain. 2001. Skeletons of terrestrial cetaceans and the relationship of whales to artiodactyls. *Nature* 413:277–281.
- Thewissen, J. G. M., and S. Bajpai. 2009. New skeletal material of *Andrewsihius* and *Kutchicetus*, two Eocene cetaceans from India. *Journal of Paleontology* 83:635–663.
- Thewissen, J. G. M., and S. T. Hussain. 1998. Systematic review of the Pakicetidae, early and middle Eocene Cetacea (Mammalia) from Pakistan and India. *Bulletin of the Carnegie Museum of Natural History* 34:220–238.
- Thewissen, J. G. M., and E. M. Williams. 2002. The early radiations of Cetacea (Mammalia): evolutionary pattern and developmental correlations. *Annual Review of Ecology and Systematics* 33:73–90.
- Thewissen, J. G. M., L. N. Cooper, M. T. Clementz, S. Bajpai, and B. N. Tiwari. 2007. Whales originated from aquatic artiodactyls in the Eocene epoch of India. *Nature* 450:1190–1194.
- Thewissen, J. G. M., L. N. Cooper, J. C. George, and S. Bajpai. 2009. From land to water: the origin of whales, dolphins, and porpoises. *Evolution* 2:272–288.
- Upham, N. S., J. A. Esselstyn, and W. Jetz. 2019. Inferring the mammal tree: species-level sets of phylogenies for questions in ecology, evolution, and conservation. *PLoS Biology* 17:e3000494.
- Von Békésy, G. 1960. *Experiments in hearing*. McGraw-Hill Series in Psychology. McGraw-Hill, New York, p. 745.
- Waugh, D. A., and J. G. M. Thewissen. 2021. The pattern of brain-size change in the early evolution of cetaceans. *PLoS ONE* 16:e0257803.
- Wever, E. G., J. G. McCormick, J. Palin, and S. H. Ridgway. 1971. The cochlea of the dolphin, *Tursiops truncatus*: hair cells and ganglion cells. *Proceedings of the National Academy of Sciences USA* 68:2908–2912.
- Wickham, H. 2016. Data Analysis. Pp. 189–201 in H. Wickham, ed. *ggplot2: elegant graphics for data analysis*. Springer International Publishing, Cham, Switzerland.
- Wollack, C. H. 1963. *The auditory acuity of the sheep (Ovis aries)*. Princeton University, Princeton, N.J.
- Yamato, M., D. R. Ketten, J. Arruda, S. Cramer, and K. Moore. 2012. The auditory anatomy of the minke whale (*Balaenoptera acutorostrata*): a potential fatty sound reception pathway in a baleen whale. *Anatomical Record* 295:991–998.
- Yuen, M. M. L., P. E. Nachtigall, M. Breese, and A. Y. Supin. 2005. Behavioral and auditory evoked potential audiograms of a false killer whale (*Pseudorca crassidens*). *Journal of the Acoustical Society of America* 118:2688–2695.