

The Journal of

THE HELICOPTER ASSOCIATION OF GREAT BRITAIN

CONTENTS include

SOME DESIGN ASPECTS OF TANDEM
ROTOR HELICOPTERS

By J D Sibley and C H Jones

THE PROGRAMME OF DEVELOPMENT TESTING
FOR A HELICOPTER

By T G G Newbery

CIERVA MEMORIAL PRIZE ESSAY COMPETITION 1958

IS MAN-POWERED ROTATING WING FLIGHT
A FUTURE POSSIBILITY

By C H Naylor

MAN-POWERED HELICOPTERS

By B S Shenstone and R H Whitby

LONDON

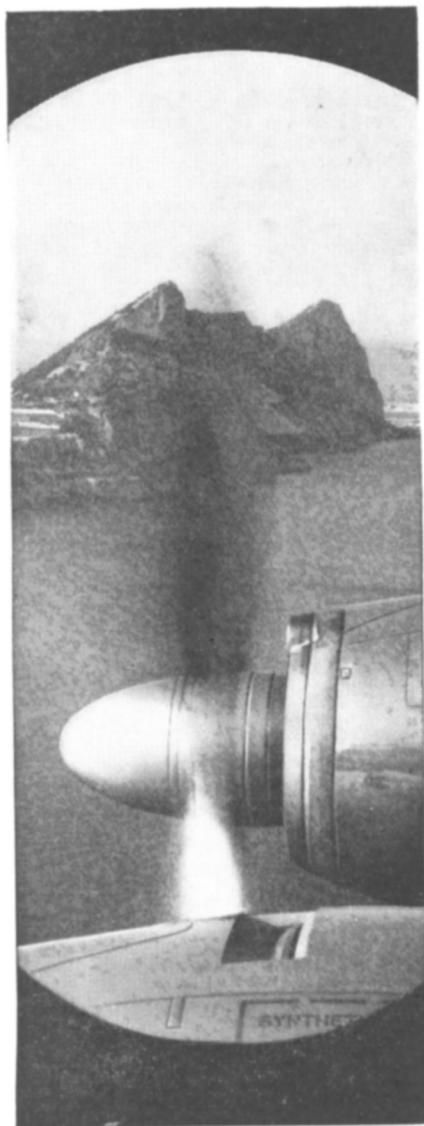
4, THE SANCTUARY,
WESTMINSTER, S W 1

Vol 13 No 5 OCTOBER 1959

Up in the air...

all over the world
the majority of modern aircraft
depend on Rotax Units

Rotax have been specialists in
the design and manufacture of
electrical and starting systems for
aircraft for more than 40 years
Today, all Rotax facilities for
research, development, manufacture
and a comprehensive advisory
service are at the service of the
aircraft industries of the world



Complete Electrical and Starting Systems for Aircraft

Rotax Limited Willesden Junction London N W 10
Lucas Rotax (Australia) Pty Ltd Melbourne and Sydney Australia
Lucas Rotax Ltd Toronto Montreal and Vancouver Canada



Wherever helicopters fly on regular services whether from city centres or airfields in difficult terrain, the need for an all-altitude navigation system of high accuracy is vital. Only Decca provides such precise information continuously with pictorial presentation in the cockpit.



Being a low frequency hyperbolic navigation system Decca gives high-accuracy coverage down to ground level unaffected by weather or intervening obstacles. The system is so precise that it can be also used as an approach aid over more than a million square miles of Europe.

Because of Decca's high accuracy at all altitudes it is the only system that provides both close lateral separation in flight and flexibility in routing.

THE DECCA NAVIGATOR

*the world's most accurate
navigation system*

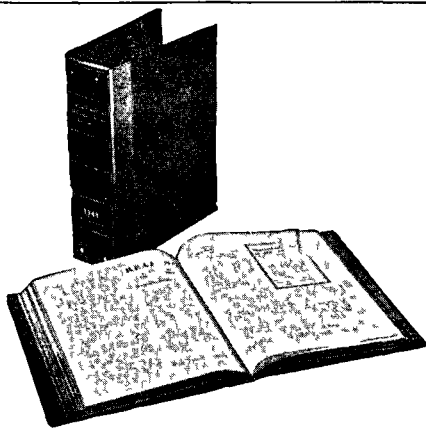
THE DECCA NAVIGATOR COMPANY LTD LONDON

HELICOPTER DYNAMICS AND AERODYNAMICS

By **P R PAYNE** This is the first really comprehensive treatment of helicopter theory by a practising designer of rotary wing aircraft. Correlating theory and practical results throughout, the author has constantly kept in mind the requirements of the industry. The book which is more up to date than anything yet published on the subject contains the first accounts in book form of cantilever stiff hinged high flapping pin offset and other advanced forms of rotor, and also the rotor blade flutter. No prior knowledge of helicopter theory is required of the reader who is taken up to the most advanced theories and methods used in the modern design office.

From booksellers 84/- net

PITMAN Parker Street, Kingsway, London, W C 2



PROTECT

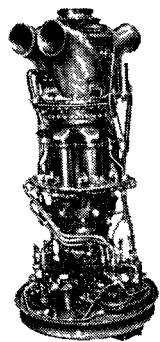
YOUR JOURNALS

The Binders illustrated, in which the Association Journals can be readily clipped for preservation and easy reference, are available from the Association's Offices. The price is 15/- (Overseas postage extra), and this includes the Title in gold lettering on the spine.


4 The Sanctuary, Westminster, S W 1



Whether it's at one end, as in the quietly efficient Westland Wessex whether it's at both ends, as in the outstanding Bristol 192 whether it's upright, horizontal or in any position in between, the Napier Gazelle free turbine engine will always satisfy the exacting demands of helicopter operation. Designed specifically for use in helicopters, the Napier Gazelle, with its "any angle" installation, relieves the designer of many accepted limitations and gives him more opportunity to make proper use of fuselage space.



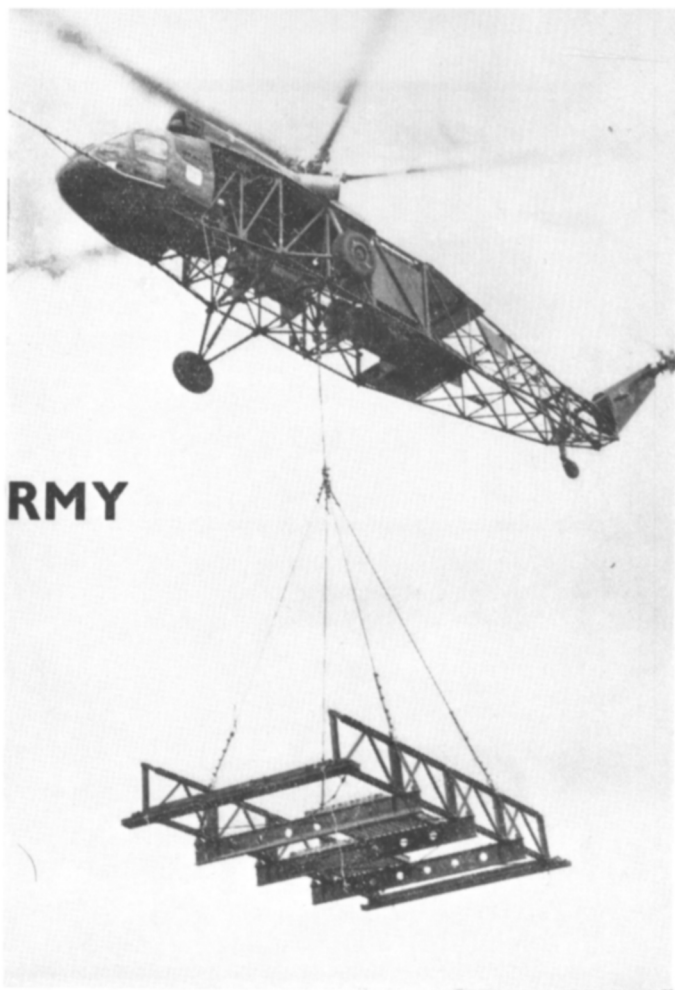
NAPIER **GAZELLE** FREE TURBINE ENGINE

D NAPIER & SON LIMITED LONDON W3 A member of the English Electric Aviation Group 

UPLIFT FOR THE ARMY

The Crane-Transporter version of the Westminster typifies a new concept for helicopter utilisation in military logistics. It meets the requirements for the rapid transport of heavy equipment from supply bases to forward areas in support of main forces or to small units operating independently over

scattered areas. Missiles, big guns, vehicles, field hospitals, living huts and a variety of other field equipment all come within the lifting capacity of the Westminster, and can be held at the hover throughout the helicopter's duration. In short, it is designed to take on the tough, heavy-duty transport work for the Army, and dispose of the supply problems posed firstly, by the absence of airfields and secondly, by terrain impassable to surface transport. The Westminster is powered by twin turbine engines and is able to operate on one of them with full load if need be. Picture shows the experimental prototype of the Crane-Transporter lifting an Army bridging section weighing 6,140 lbs.



WESTLAND

a great name in **HELICOPTERS**

WESTLAND AIRCRAFT LIMITED • YEOVIL • ENGLAND

The Journal of THE HELICOPTER ASSOCIATION OF GREAT BRITAIN

President
N L ROWE CBE DIC BSc MIMechE ACGI MInst'l FCGI
FRAeS FIAeS Whit Ex

Past Presidents
E Mensforth CBE MA MIMechE FRAeS MIPE
J G Weir CMG CBE FRAeS
Marshal of the RAF Lord Douglas of Kirtleside GCB MC DFC
The Rt Hon Lord Brabazon of Tara GBE MC PC Hon FRAeS

Vice Presidents
G S Hislop PhD BSc (Eng) ARCT MIMechE FRAeS
Lt Col J W Richardson FRAeS

Offices 4, The Sanctuary, Westminster, S W 1 Tel Abbey 5160

VOL 13 No 5

October, 1959

PRICE 10/6

THE COUNCIL

Chairman

J A J Bennett DSc PhD
FRAeS

B H Arkell AFR AeS
R A C Brie AFR AeS
AFIAeS

J A Cameron
D M Davies, MA (Cantab)
AFRAeS
L G Frise BSc FRAeS
AFIAeS

M H C Gordon
R Hafner FRAeS
N J G Hill AMIMechE
ARAeS MCAI

C T D Hosegood
A McClements ARCT
MIMechE

J W Richardson AFR AeS
W H Sear

J S Shapiro Dipl Ing
AFRAeS
D L Hollis Williams BSc
FRAeS

Hon Secretary

R H Whitby DIC ARCT
BSc FRAeS

Hon Treasurer

W G Leslie ACIS

Asst Secretary

Miss S Rigby

Journal Hon Editor

B H Arkell AFR AeS

Technical Editors

D M Davies MA, AFR AeS
A McClements ARCT
MIMechE

J S Shapiro Dipl Ing
AFRAeS

R H Whitby DIC ARCT
BSc, FRAeS

Librarian

R W L Cure

Auditors

W B Keen & Co

The opinions expressed in papers read before the Association and in the discussions also recorded in this Journal are not necessarily those of the Executive Council or of the Association as a whole

CONTENTS

	<i>Page</i>
SOME DESIGN ASPECTS OF TANDEM ROTOR HELICOPTERS	
By J D SIBLEY and C H JONES	225
DISCUSSION	252
THE PROGRAMME OF DEVELOPMENT TESTING FOR A HELICOPTER	
By T G G NEWBERY	262
DISCUSSION	280
CIERVA MEMORIAL PRIZE ESSAY COMPETITION 1958	
IS MAN-POWERED ROTATING WING FLIGHT A FUTURE POSSIBILITY	
By C H NAYLOR	294
MAN-POWERED HELICOPTERS	
By B S SHENSTONE and R H WHITBY	305
BOOK REVIEW	315
THE THIRTEENTH ANNUAL DINNER OF THE HELICOPTER ASSOCIATION OF GREAT BRITAIN	316
CORRESPONDENCE	319

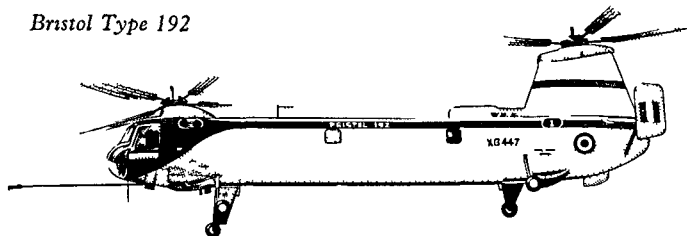
OBJECTS OF THE ASSOCIATION

The objects of the Association are to collect compile and disseminate information of a technical and semi technical nature pertaining to Helicopters and all other types of Rotating Wing Aircraft The Association aims to work in close co operation with existing Aeronautical Bodies on matters affecting its objects and it may act as an Advisory Body in the promotion of legislation calculated to be of benefit to the development of Rotating Wing Aircraft

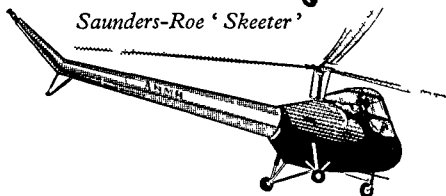
Publications Manager

S H Pilton, Effingham House Arundel Street, London WC2

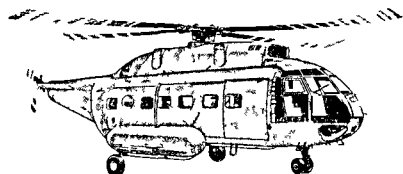
Bristol Type 192



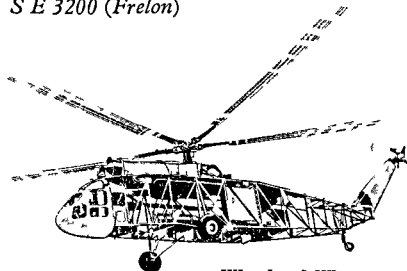
Saunders-Roe 'Skeeter'



Gears for Rotor Drives



SE 3200 (Frelon)



Westland Westminster

ENV manufacture precision spiral bevel gears of the type used in all British shaft-driven helicopters and Continental helicopters in current production. These include the Saunders-Roe Skeeter and P 531, Westland Widgeon, Wessex, Whirlwind and Westminster, Bristol Sycamore and 192, Sud Aviation Alouette II, Alouette III and Frelon.

ENV

FOR GEARS



ENV ENGINEERING COMPANY LIMITED, HYTHE ROAD, WILLESDEN LONDON, N W 10
Telephone LADbroke 3622 AP109